

NEW MEXICO OIL CONSERVATION COMMISSION
WELL LOCATION AND ACREAGE DEDICATION PLAT

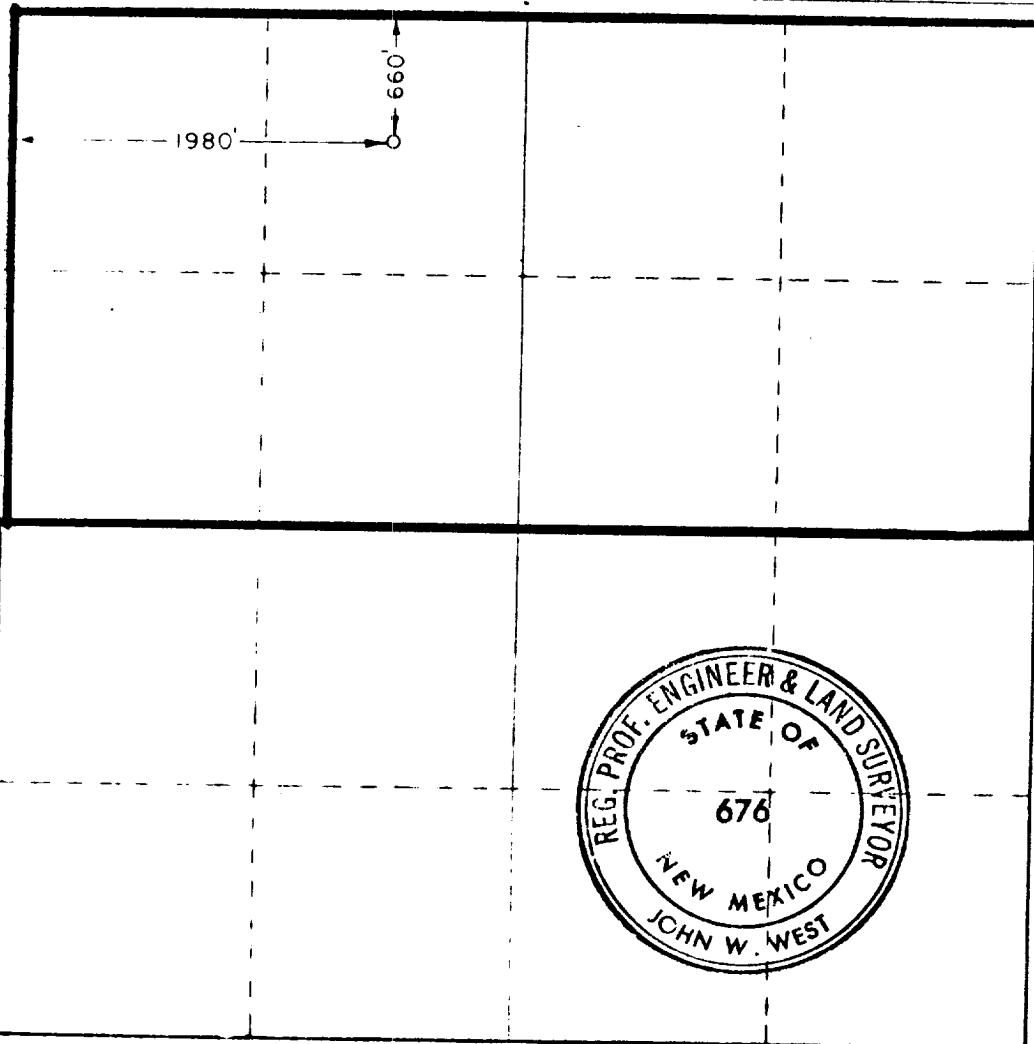
All distances must be from the outer boundaries of the Section

Gulf Oil Corporation		Covington "A" Federal		Section 1	
C	25	22 South	32 East	Lease	
660	feet from the	North	line and	1980	feet from the
	East				West
Morrow		Wildcat		320	

- Outline the acreage dedicated to the subject well by colored pencil or hatchure marks on the plat below.
- If more than one lease is dedicated to the well, outline each and identify the ownership thereof (both as to working interest and royalty)
- If more than one lease of different ownership is dedicated to the well, have the interests of all owners been consolidated by communitization, unitization, force-pooling, etc?
☐ Yes ☐ No If answer is "yes," type of consolidation _____

If answer is "no" list the owners and tract descriptions which have actually been consolidated (Use reverse side of this form if necessary.) _____

No allowable will be assigned to the well until all interests have been consolidated (by communitization, unitization, forced-pooling, or otherwise) or until a non-standard unit, eliminating such interests, has been approved by the Commission.



CERTIFICATION

I hereby certify that the information contained herein is true and complete to the best of my knowledge and belief

C. D. Borland

C. D. BORLAND

Area Production Manager

Gulf Oil Corporation

December 13, 1974

I hereby certify that the well location shown on this plat was plotted from notes of actual surveys made by _____ under my supervision, and that the same is true and correct to the best of my knowledge and belief

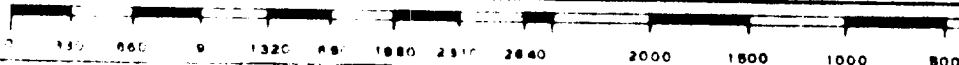
Date Surveyed

December 6, 1974

Registered Professional Engineer and Land Surveyor

John W. West

676



RECEIVED

JAN 1 1975

OIL CONSERVATION COMM.
HOBBS, N. M.