

District I
PO Box 1980, Hobbs, NM 88241-1980
District II
PO Drawer DD, Artesia, NM 88211-0719
District III
1000 Rln Brasse Rd., Aztec, NM 87410
District IV
PO Box 2088, Santa Fe, NM 87504-2088

State of New Mexico
Energy, Minerals & Natural Resources Department

OIL CONSERVATION DIVISION
PO Box 2088
Santa Fe, NM 87504-2088

Form C-102
Revised February 21, 1994
Instructions on back
Submit to Appropriate District Office
State Lease - 4 Copies
Fee Lease - 3 Copies

☐ AMENDED REPORT

WELL LOCATION AND ACREAGE DEDICATION PLAT

1 API Number 30-025-24956		2 Pool Code 76480		3 Pool Name Eumont Yates 7 Rvrs Queen Gas	
4 Property Code 002999		5 Property Name Britt B			6 Well Number 25
7 OGRID No. 005073		8 Operator Name CONOCO INC.			9 Elevation 3570'

10 Surface Location

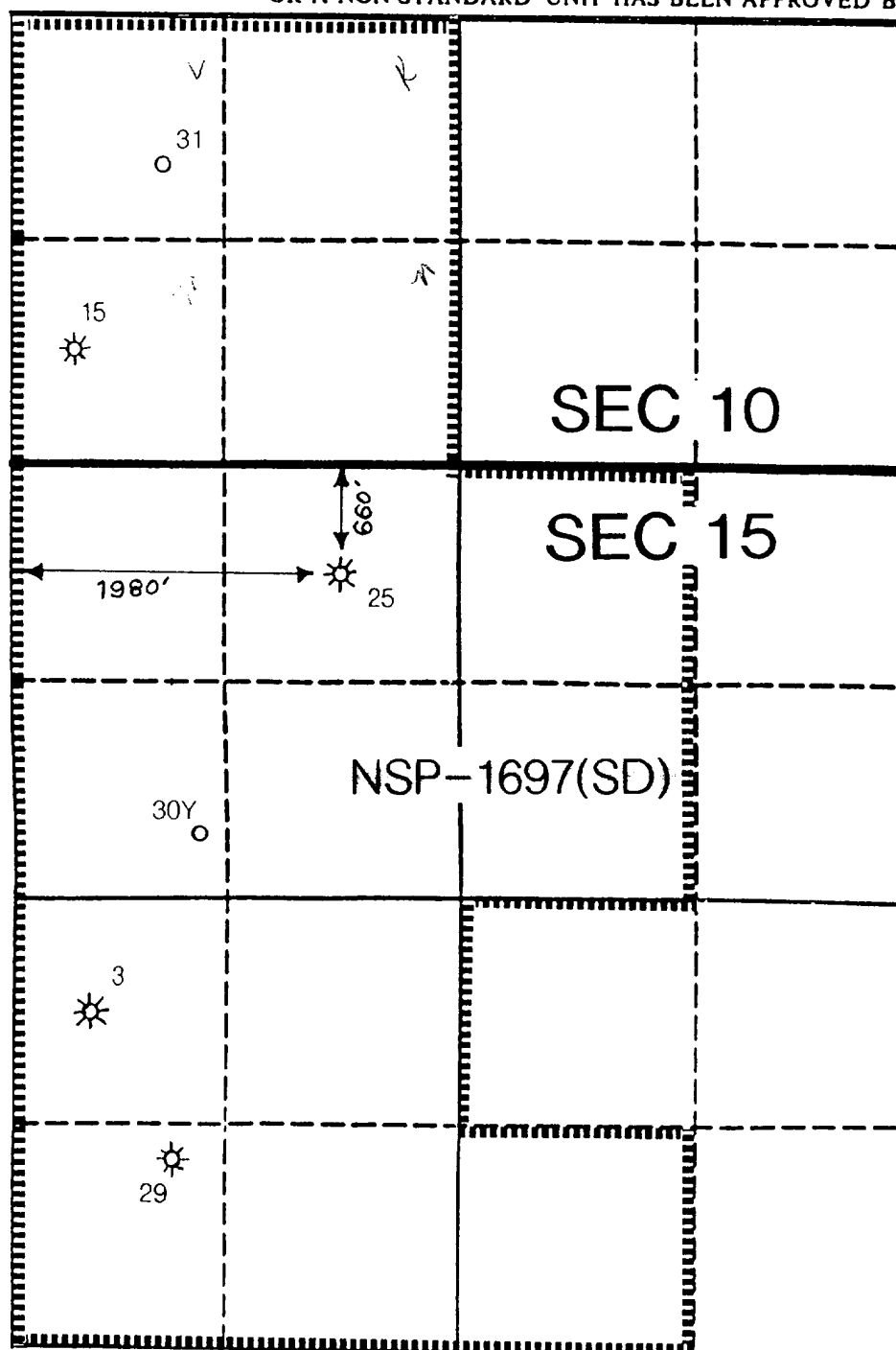
UL or lot no. C	Section 15	Township 20S	Range 37E	Lot Ida	Feet from the 660	North/South line North	Feet from the 1980	East/West line West	County Lea
--------------------	---------------	-----------------	--------------	---------	----------------------	---------------------------	-----------------------	------------------------	---------------

11 Bottom Hole Location If Different From Surface

UL or lot no.	Section	Township	Range	Lot Ida	Feet from the	North/South line	Feet from the	East/West line	County
---------------	---------	----------	-------	---------	---------------	------------------	---------------	----------------	--------

12 Dedicated Acres 600	13 Joint or In/In	14 Consolidation Code	15 Order No.
---------------------------	-------------------	-----------------------	--------------

NO ALLOWABLE WILL BE ASSIGNED TO THIS COMPLETION UNTIL ALL INTERESTS HAVE BEEN CONSOLIDATED
OR A NON-STANDARD UNIT HAS BEEN APPROVED BY THE DIVISION



17 OPERATOR CERTIFICATION

I hereby certify that the information contained herein is true and complete to the best of my knowledge and belief

Signature
Jerry W. Hoover

Printed Name
Sr. Conservation Coordinator

Title
1/4/95

Date

18 SURVEYOR CERTIFICATION

I hereby certify that the well location shown on this plat was plotted from field notes of actual surveys made by me or under my supervision, and that the same is true and correct to the best of my belief.

Date of Survey

Signature and Seal of Professional Surveyor:

Certificate Number

RECEIVED

JAN 05 1995

OCD HOBBS
OFFICE

OIL CONSERVATION DIVISION

P.O. Box 2088

Santa Fe, New Mexico 87504-2088

DISTRICT I
P.O. Box 1980, Hobbs, NM 88240

DISTRICT II
P.O. Drawer DD, Artesia, NM 88210

DISTRICT III
1000 Rio Brazos Rd., Aztec, NM 87410

WELL LOCATION AND ACREAGE DEDICATION PLAT

All Distances must be from the outer boundaries of the section

Operator Conoco Inc.			Lease Brith B		Well No. #25
Unit Letter C	Section 15	Township 20S	Range 37E	County Lea	
Actual Footage Location of Well: 660 feet from the North line and 1980 feet from the West line					
Ground level Elev. 4308.6		Producing Formation Eumont		Pool Eumont Queen Gas	Dedicated Acreage: 640 Acres

1. Outline the acreage dedicated to the subject well by colored pencil or hatchure marks on the plat below.

2. If more than one lease is dedicated to the well, outline each and identify the ownership thereof (both as to working interest and royalty).

3. If more than one lease of different ownership is dedicated to the well, have the interest of all owners been consolidated by communitization, unitization, force-pooling, etc.?

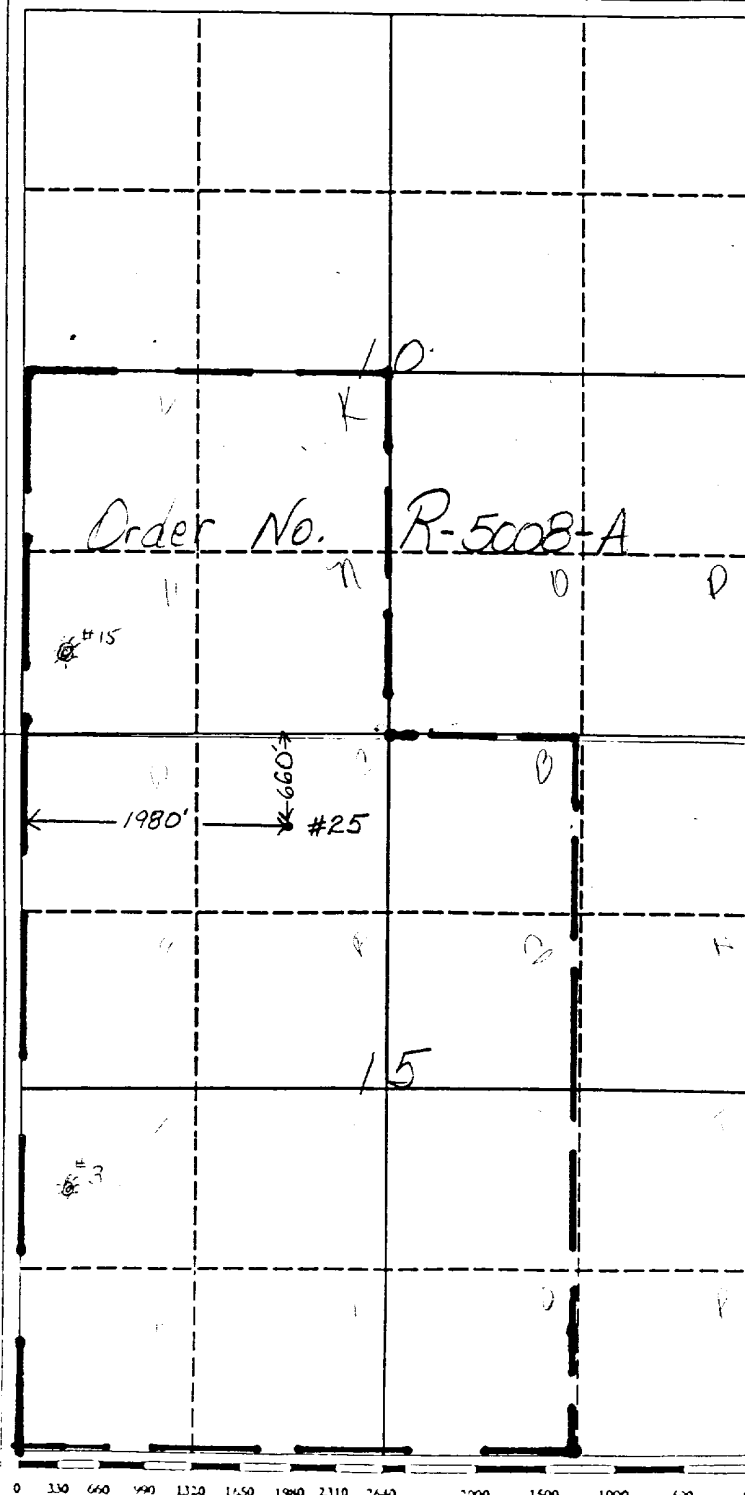
☐ Yes

☐ No

If answer is "yes" type of consolidation

If answer is "no" list the owners and tract descriptions which have actually been consolidated. (Use reverse side of this form if necessary.)

No allowable will be assigned to the well until all interests have been consolidated (by communitization, unitization, forced-pooling, or otherwise) or until a non-standard unit, eliminating such interest, has been approved by the Division.



OPERATOR CERTIFICATION

I hereby certify that the information contained herein is true and complete to the best of my knowledge and belief.

Signature

Printed Name

Position

Company

Date

SURVEYOR CERTIFICATION

I hereby certify that the well location shown on this plat was plotted from field notes of actual surveys made by me or under my supervision, and that the same is true and correct to the best of my knowledge and belief.

Date Surveyed

Signature & Seal of
Professional Surveyor

Certificate No.

Handwritten notes and stamps in the bottom right corner, including "R-5008-A", "10-20-89", and "K L".

NEW MEXICO OIL CONSERVATION COMMISSION
WELL LOCATION AND ACREAGE DEDICATION PLAT

Form C-102
Supersedes C-128
Effective 1-1-65

All distances must be from the outer boundaries of the Section

Operator <i>Continental Oil Co</i>		Lease <i>Britt B</i>		Well No. <i>25</i>
Unit Letter <i>C</i>	Section <i>15</i>	Township <i>20-S</i>	Range <i>37-E</i>	County <i>Lea</i>
Actual Footage Location of Well: <i>660</i> feet from the <i>north</i> line and <i>1980</i> feet from the <i>west</i> line				
Ground Level Elev. <i>3560'</i>	Producing Formation <i>Eumont</i>	Pool <i>Queen</i>	Dedicated Acreage: <i>280</i> ± Acres	

1. Outline the acreage dedicated to the subject well by colored pencil or hachure marks on the plat below.
2. If more than one lease is dedicated to the well, outline each and identify the ownership thereof (both as to working interest and royalty).
3. If more than one lease of different ownership is dedicated to the well, have the interests of all owners been consolidated by communitization, unitization, force-pooling, etc?

☐ Yes ☐ No If answer is "yes," type of consolidation _____

If answer is "no," list the owners and tract descriptions which have actually been consolidated. (Use reverse side of this form if necessary.) _____

No allowable will be assigned to the well until all interests have been consolidated (by communitization, unitization, forced-pooling, or otherwise) or until a non-standard unit, eliminating such interests, has been approved by the Commission.

<p>This 280 acre non-standard gas production unit was approved by commission order No R-5008</p>			
<p>15</p>	<p>SECTION 10</p>		
		<p>SECTION 15</p>	
<p>25</p>			

CERTIFICATION

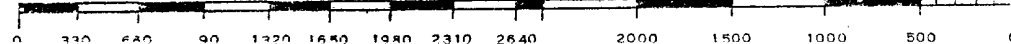
I hereby certify that the information contained herein is true and complete to the best of my knowledge and belief.

Name
Ralph Family
Position
Adm. Supervisor
Company
Continental Oil
Date
June 23, 1975

I hereby certify that the well location shown on this plat was plotted from field notes of actual surveys made by me under my supervision, and that the same is true and correct to the best of my knowledge and belief.

Date Surveyed _____
Registered Professional Engineer and/or Land Surveyor _____

Certificate No. _____



[illegible][illegible]

Figure 1. The effect of the concentration of the *Agrobacterium* suspension on the transformation efficiency of *Agrobacterium* strains. The *Agrobacterium* strains were incubated in the presence of 100 mg/ml of gentamicin and 100 mg/ml of rifampicin. The concentration of the *Agrobacterium* suspension was 10⁶ cells/ml. The transformation efficiency was determined by the number of transformants per 10⁶ cells.

3-3-75
 3-11-75
 3-17-75
 3-24-75
 6-30-75
 7-14-75

• • • • •

LEA
CONTINENTAL OIL CO.

Edmont
25 Brine 15"
Sec 13, T20S, R37E

NM
Page 2

7-14-75 Continued

(Queen) FOUR POINT GAUGES:

Flow 701 MFGGP, 2.50" orifice, 30 mins, GP 484#

Flow 1100 MFGGP, 2.50" orifice, 30 mins, GP 467#

Flow 1101 MFGGP, 2.50" orifice, 30 mins, GP 439#

Flow 1102 MFGGP, 2.50" orifice, 30 mins, GP 487#

7-19-75 COMPLETION LOG