

Submit 3 Copies To Appropriate District Office  
District I  
1625 N. French Dr., Hobbs, NM 88240  
District II  
1301 W. Grand Ave., Artesia, NM 88210  
District III  
1000 Rio Brazos Rd., Aztec, NM 87410  
District IV  
1220 S. St. Francis Dr., Santa Fe, NM 87505

State of New Mexico  
Energy, Minerals and Natural Resources

Form C-103  
Revised March 25, 1999

OIL CONSERVATION DIVISION  
1220 South St. Francis Dr.  
Santa Fe, NM 87505

WELL API NO.  
30-025-25037

5. Indicate Type of Lease  
STATE ☒ FEE ☐

6. State Oil & Gas Lease No.

7. Lease Name or Unit Agreement Name:

H. T. Mattern (NCT-F)

8. Well No. 4

9. Pool name or Wildcat  
Eumont; Yates-7 Rivers-Queen

SUNDRY NOTICES AND REPORTS ON WELLS

(DO NOT USE THIS FORM FOR PROPOSALS TO DRILL OR TO DEEPEN OR PLUG BACK TO A DIFFERENT RESERVOIR. USE "APPLICATION FOR PERMIT" (FORM C-101) FOR SUCH PROPOSALS.)

1. Type of Well:  
Oil Well ☐ Gas Well ☒ Other ☐

2. Name of Operator  
Chevron U.S.A. Inc

3. Address of Operator  
P. O. Box 1150, Midland, TX 79702

4. Well Location

Unit Letter B : 660 feet from the North line and 1650 feet from the East line

Section 1 Township 22S Range 36E NMPM County LEA

10. Elevation (Show whether DR, RKB, RT, GR, etc.)  
3496' GR

11. Check Appropriate Box to Indicate Nature of Notice, Report or Other Data

NOTICE OF INTENTION TO:

PERFORM REMEDIAL WORK ☐ PLUG AND ABANDON ☒

TEMPORARILY ABANDON ☐ CHANGE PLANS ☐

PULL OR ALTER CASING ☐ MULTIPLE COMPLETION ☐

OTHER: ☐

SUBSEQUENT REPORT OF:

REMEDIAL WORK ☐ ALTERING CASING ☐

COMMENCE DRILLING OPNS. ☐ PLUG AND ABANDONMENT ☐

CASING TEST AND CEMENT JOB ☐

OTHER: ☐

12. Describe proposed or completed operations. (Clearly state all pertinent details, and give pertinent dates, including estimated date of starting any proposed work). SEE RULE 1103. For Multiple Completions: Attach wellbore diagram of proposed completion or recompilation.

Chevron proposes to P&A per the attached procedure.

This well is part of the New Mexico "P&A Pilot Project" conducted by Benterra Corporation to demonstrate the plugging and abandonment process using compressed sodium bentonite nodules as the plugging medium.

POST SUBSEQUENT P&A TO RBDMS COMPLIANCE SCREEN

THE COMMISSION MUST BE NOTIFIED 24 HOURS PRIOR TO THE BEGINNING OF PLUGGING OPERATIONS FOR THE C-103 TO BE APPROVED.

I, \_\_\_\_\_

information above is true and complete to the best of my knowledge and belief.

SIGNATURE J.K. Ripley TITLE Regulatory OA

DATE 8/8/01

Type or print name J.K. Ripley

Telephone No. (915) 687-7148

(This space for State use)

APPROVED BY \_\_\_\_\_ TITLE \_\_\_\_\_ DATE \_\_\_\_\_

Conditions of approval, if any:

6

## P&A PROCEDURE

Well Name: H. T. Mattern NCT - F #4  
API Number: 30-025-25037  
Coordinates: 660' FNL & 1650' FEL  
S - T - R: 1 - 22S - 36 E Unit B  
County / State: Lea, New Mexico  
Drilled: 1975

Operator: Chevron  
Field: Eumont/Jalmat  
Date: 8/2/01  
By: DCD

### Provide 24 hr Notification to NMOCD of Pending Operations

1. MI Benterra equip. Hold pre-job safety mtg and spot equipment. Check 51/2" csg and 85/8" x 51/2" annulus for pressure.
2. ND WH equip and install well control equip.
3. Check btm w/ SL (CIBP w/ cmt @ 5325'). Record FL. Displace wellbore fluids above open perms w/ freshwater.
4. Insert 51/2" wiper plug (cored to allow fluid bypass) into csg and push to 2675' w/ slickline.
5. Surface pour 14 cu ft of ZONITE to set 100' btm plug from approx 2575 - 2675'. Set plug in stages, check w/ SL to assure bridges are not occurring and required plug height is achieved. Pour at rate that minimizes potential to bridge. After setting plug, add water as necessary to assure hydration of plug. Remove well control equip and NU WH to secure well.
6. Move off location and wait minimum of 48 hours for plug to hydrate. Assure that an adequate fluid level to hydrate plug is maintained.
7. MI Benterra equip. Hold pre-job safety mtg and spot equipment. Check 51/2" csg and 85/8" x 51/2" annulus for press. Install well control equip.
8. Check top of plug w/ SL and record FL. Fill casing to surface w/ freshwater.
9. Push cored 51/2" wiper plug to 1210' w/ slickline. Cap w/ 10' of ZONITE (1-2 cu ft).
10. MI PU and ancillary equipment for cutting/pulling 51/2" csg. Hold safety pre-job safety meeting. Check casings for pressure, RU PU and equipment.
11. Cut csg @ approx 1190', pull and LD 51/2" csg. RD & RPU and ancillary equip.
12. MI Benterra equip, check btm w/ SL & record FL.
13. Pour estimated 54 cu ft ZONITE to set shoe plug and extend 50' above Rustler = 1080 - 1189'. Vol is based on 11" OH. Set plug in stages, checking w/ SL to assure bridges are not occurring and required height is achieved. Pour at rate that minimizes potential to bridge. After setting plug, add water as necessary to assure hydration of plug.
14. Push cored 85/8" wiper plug to 350' w/ SL.

## **H. T. Mattern NCT - F #4**

### **P&A Procedure**

**Page 2**

15. Pour 36 cu ft ZONITE to set 100' plug across FW interval from 250 - 350'. Use precautions as in Step 13 while pouring ZONITE. If necessary, add water to hydrate plug.
16. Insert & push 85/8" wiper plug to 30' w/ SL. Fill csg w/ ZONITE to 3' from surface (11 cu ft). Add water as needed to hydrate plug.
17. Secure wellbore and RD equip.
18. Allow 48 hours for ZONITE to hydrate, remove WH, cut off casings 3' below GL and cap wellbore.
19. Install dry hole marker stamped w/ required well identification, 4" OD x 4' above GL.
19. Remove all equip and cut deadmen below GL.
20. Turn over to Chevron for any surface remediation work.

**Estimated ZONITE Requirements:**                      **118 ft<sup>3</sup>**

# WELL PLANNING SHEET

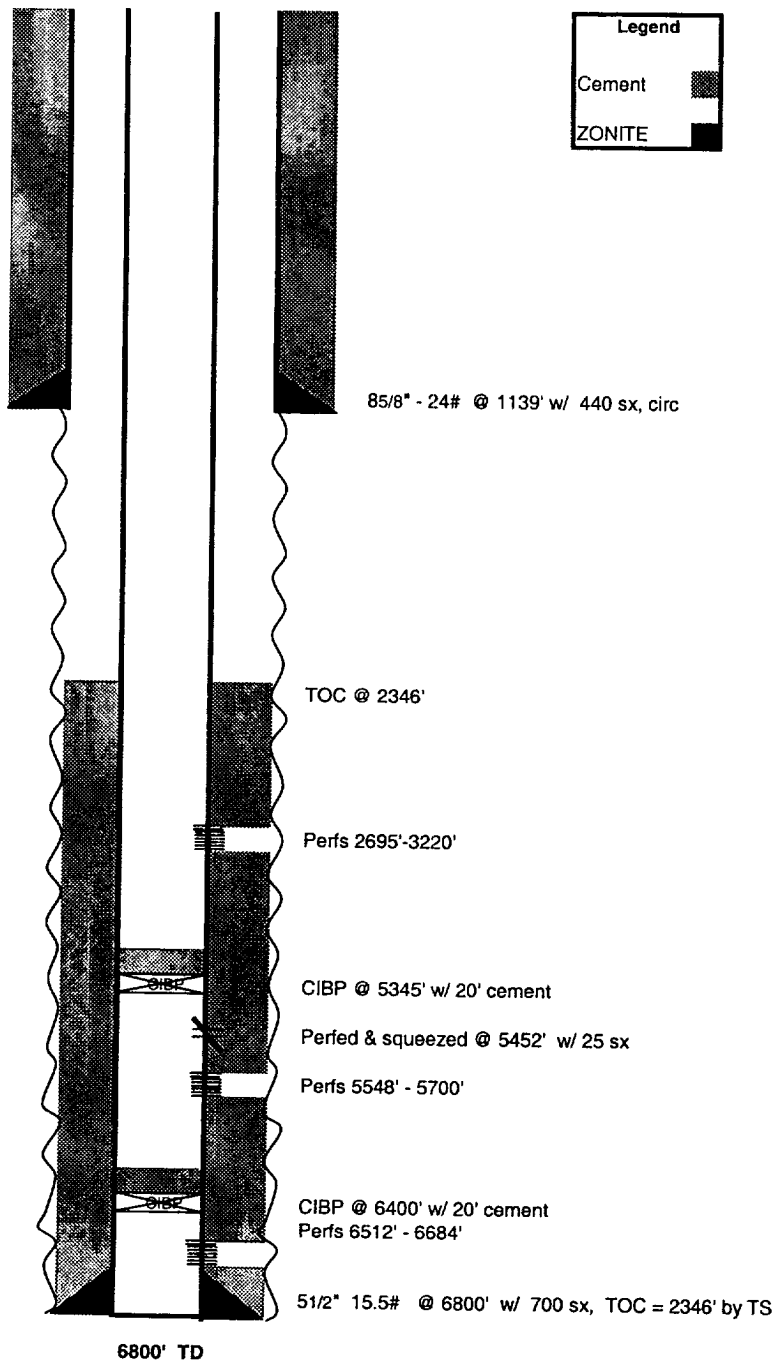
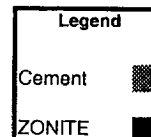
## Existing Configuration

Well Name: H. T. Mattern NCT - F #4  
API Number: 30-025-25037  
Coordinates: 660' FNL & 1650' FEL  
S - T - R: 1 - 22S - 36 E Unit B  
County / State: Lea, New Mexico  
Drilled: 1975

Operator: Chevron  
Field: Eumont/Jalmat  
Date: 8/2/2001  
By: DCD

RKB = N/A

Formation Tops	
Rustler	1130'
Salt	1200'
Yates	2645'
7 Rivers	2892'
Queen	3340'
Penrose	3448'





**WELL PLANNING SHEET**  
**Proposed P&A**

Well Name: H. T. Mattem NCT - F #4  
API Number: 30-025-25037  
Coordinates: 660' FNL & 1650' FEL  
S - T - R: 1 - 22S - 36 E Unit B  
County / State: Lea, New Mexico  
Drilled: 1975

Operator: Chevron  
Field: Eumont /Jalmat  
Date: 8/2/2001  
By: DCD

RKB = N/A

Formation Tops	
Rustler	1130'
Salt	1200'
Yates	2645'
7 Rivers	2892'
Queen	3340'
Penrose	3448'

Legend	
Cement	
ZONITE	

ZONITE Plugs	
3 - 30'	Top Plug
250 - 350'	FW
1080 - 1189'	Rustler/Shoe
2575 - 2675'	Perf Plug

