

P&A PROCEDURE

*OCD
marking*

Well Name: H. T. Mattern NCT - F #4
API Number: 30-025-25037
Coordinates: 660' FNL & 1650' FEL Unit B
S - T - R: 1 - 22S - 36 E
County / State: Lea, New Mexico
Drilled: 1975

Operator: Chevron
Field: Eumont/Jalmat
Date: 8/2/01
By: DCD

Provide 24 hr Notification to NMOCD of Pending Operations

1. MI Benterra equip. Hold pre-job safety mtg and spot equipment. Check 51/2" csg and 85/8" x 51/2" annulus for pressure.
2. ND WH equip and install well control equip.
3. Check btm w/ SL (CIBP w/ cmt @ 5325'). Record FL. Displace wellbore fluids above open perms w/ freshwater.
4. Insert 51/2" wiper plug (cored to allow fluid bypass) into csg and push to 2675' w/ slickline.
5. Surface pour 14 cu ft of ZONITE to set 100' btm plug from approx 2575 - 2675'. Set plug in stages, check w/ SL to assure bridges are not occurring and required plug height is achieved. Pour at rate that minimizes potential to bridge. After setting plug, add water as necessary to assure hydration of plug. Remove well control equip and NU WH to secure well.
6. Move off location and wait minimum of 48 hours for plug to hydrate. Assure that an adequate fluid level to hydrate plug is maintained.
7. MI Benterra equip. Hold pre-job safety mtg and spot equipment. Check 51/2" csg and 85/8" x 51/2" annulus for press. Install well control equip.
8. Check top of plug w/ SL and record FL. Fill casing to surface w/ freshwater.
9. Push cored 51/2" wiper plug to 1270' w/ slickline. Cap w/ 10' of ZONITE (1 - 2 cu ft).
10. MI PU and ancillary equipment for cutting/pulling 51/2" csg. Hold safety pre-job safety meeting. Check casings for pressure, RU PU and equipment.
11. Cut csg @ approx 1250', pull and LD 51/2" csg. RD & RPU and ancillary equip.
12. MI Benterra equip, check btm w/ SL & record FL.
13. Pour estimated 90 cu ft ZONITE to set plug @ top of salt & extend 50' above shoe = 1089 - 1250'. Vol is based on 11" OH. Set plug in stages, checking w/ SL to assure bridges are not occurring and required height is achieved. Pour at rate that mimizes potential to bridge. After setting plug, add water as necessary to assure hydration of plug.
14. Insert & push 85/8" wiper plug to 30' w/ SL. Fill csg w/ ZONITE to 3' from surface (11 cu ft). Add water as needed to hydrate plug.

H. T. Mattern NCT - F #4

P&A Procedure

Page 2

15. Secure wellbore and RD equip.
16. Allow 48 hours for ZONITE to hydrate, remove WH, cut off casings 3' below GL and cap wellbore.
17. Install dry hole marker stamped w/ required well identification, 4" OD x 4' above GL.
18. Remove all equip and cut deadmen below GL.
19. Turn over to Chevron for any surface remediation work.

Estimated ZONITE Requirements: **117 ft³**

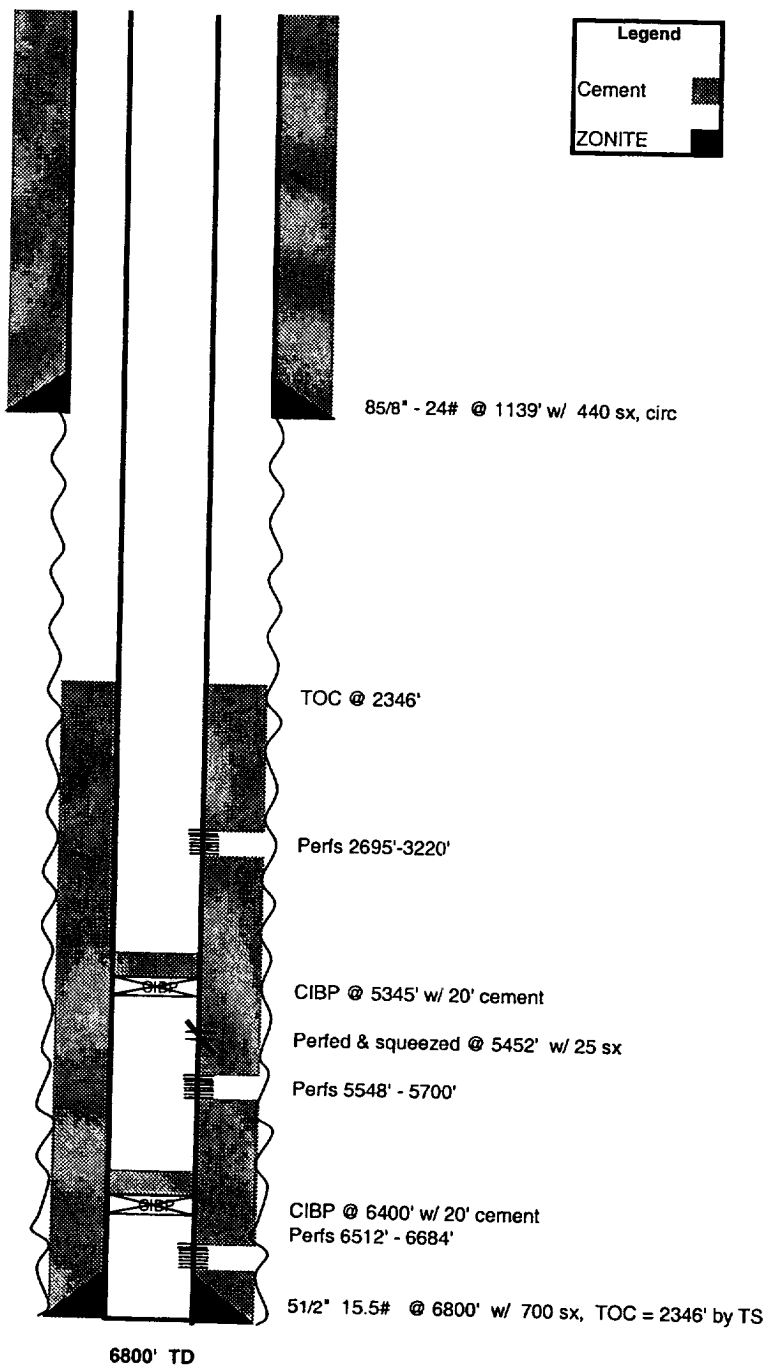
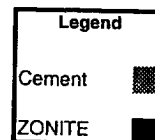
WELL PLANNING SHEET
Existing Configuration

Well Name: H. T. Mattern NCT - F #4
API Number: 30-025-25037
Coordinates: 660' FNL & 1650' FEL Unit B
S - T - R: 1 - 22S - 36 E
County / State: Lea, New Mexico
Drilled: 1975

Operator: Chevron
Field: Eumont/Jalmat
Date: 8/2/2001
By: DCD

RKB = N/A

Formation Tops	
Salt	1200'
Yates	2645'
7 Rivers	2892'
Queen	3340'
Penrose	3448'



WELL PLANNING SHEET
Proposed P&A

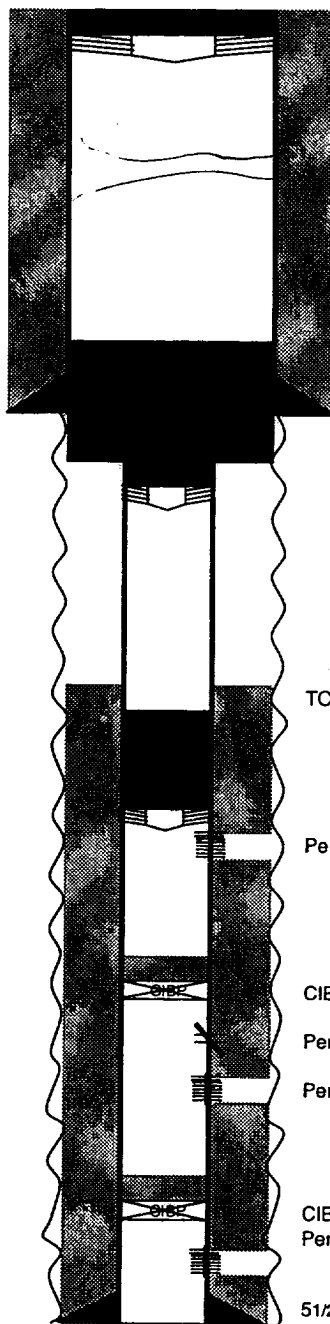
Well Name: H. T. Mattem NCT - F #4
API Number: 30-025-25037
Coordinates: 660' FNL & 1650' FEL Unit B
S - T - R: 1 - 22S - 36 E
County / State: Lea, New Mexico
Drilled: 1975

Operator: Chevron
Field: Eumont /Jalmat
Date: 8/2/2001
By: DCD

RKB = N/A

Formation Tops	
Salt	1200'
Yates	2645'
7 Rivers	2892'
Queen	3340'
Penrose	3448'

ZONITE Plugs	
3 - 30'	
1089 - 1250'	
2575 - 2675'	



85/8" - 24# @ 1139' w/ 440 sx, circ

TOC @ 2346'

Perfs 2695'-3220'

CIBP @ 5345' w/ 20' cement

Perfed & squeezed @ 5452' w/ 25 sx

Perfs 5548' - 5700'

CIBP @ 6400' w/ 20' cement

Perfs 6512' - 6684'

51/2" 15.5# @ 6800' w/ 700 sx, TOC = 2346' by TS

6800' TD

