

CONDITIONS OF APPROVAL, IF ANY:

**ADDITIONS - DELETIONS - CHANGES
SPECIFY**

NEW MEXICO OIL CONSERVATION COMMISSION
WELL LOCATION AND ACREAGE DEDICATION PLAT

Form No. 1
Superseded Edition
May 1974

All distances must be from the outer boundaries of the Section

Gulf Oil Company		H. T. Mattem NCT "F"		4
B	1	22 South	36 East	Lea
660	North	1650	East	
3496.3	Drinkard	Drinkard	40	

1. Indicate the acreage dedicated to the subject well by colored pencil or hatchure marks on the plat below.

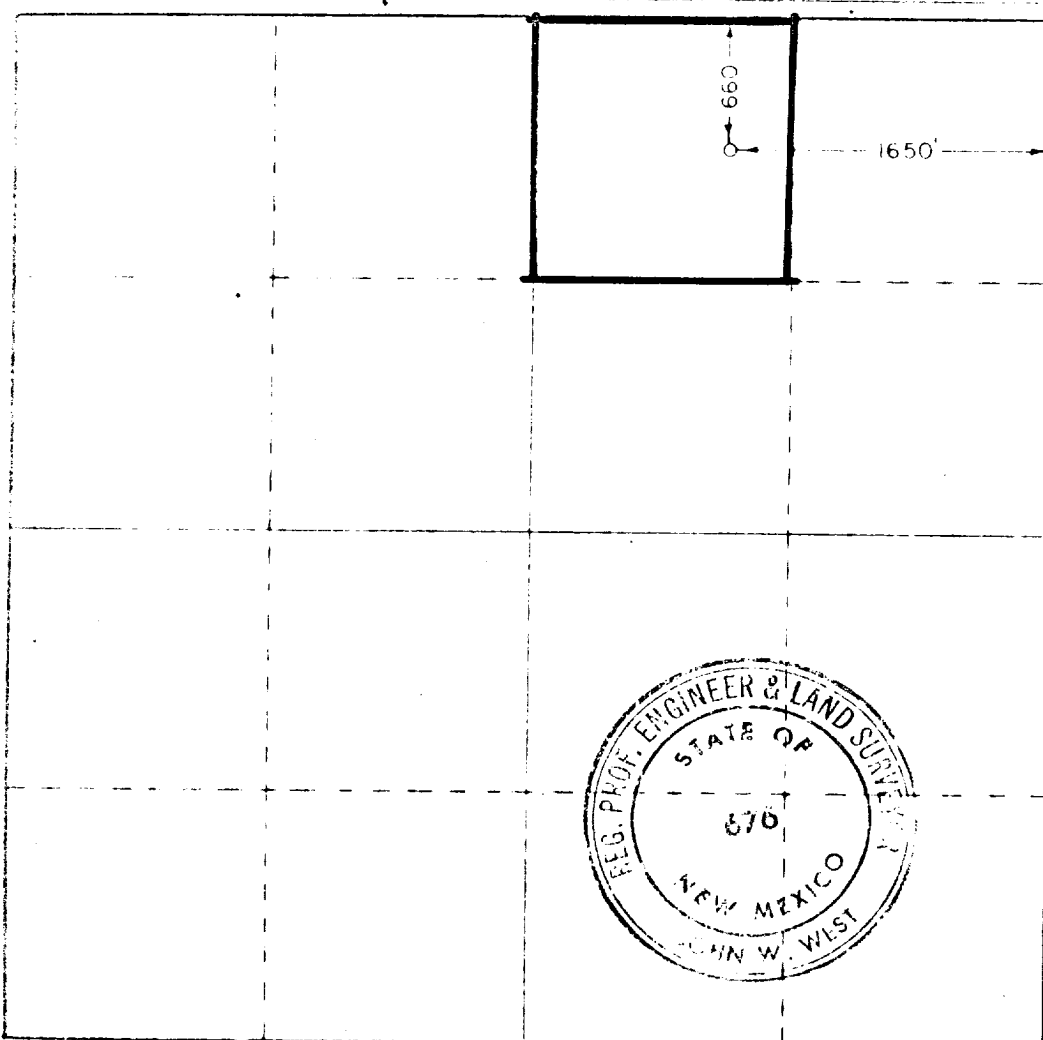
2. If more than one lease is dedicated to the well, outline each and identify the ownership thereof (both as to working interest and royalty).

3. If more than one lease of different ownership is dedicated to the well, have the interests of all owners been consolidated by communitization, unitization, force pooling etc?

Yes ☐ No ☐ If answer is "yes," type of consolidation _____

If answer is "no," list the owners and tract descriptions which have actually been consolidated (Use reverse side of this form if necessary): _____

No allowable will be assigned to the well until all interests have been consolidated (by communitization, unitization, force pooling, or otherwise) or until a non-standard unit, eliminating such interests, has been approved by the Commission.



CERTIFICATION

I hereby certify that the information contained herein is true and complete to the best of my knowledge and belief.

C. D. Borland

C. D. BORLAND

Area Production Manager

Gulf Oil Corporation

May 16, 1975

I hereby certify that the well location shown on this plat was plotted from field notes of actual surveys made by me or under my supervision and that the same is true and correct to the best of my knowledge and belief.

Date May 14, 1975

Registered Professional Engineer and Land Surveyor

John W. West
676

330 660 990 1320 1650 1980 2310 2640 2970 3300 3630 3960 4290 4620 4950 5280 5610 5940 6270 6600