

NEW MEXICO OIL CONSERVATION COMMISSION
WELL LOCATION AND ACREAGE DEDICATION PLAT

Form O-102
Supersedes O-128
Effective 1-1-65

All distances must be from the outer boundaries of the Section

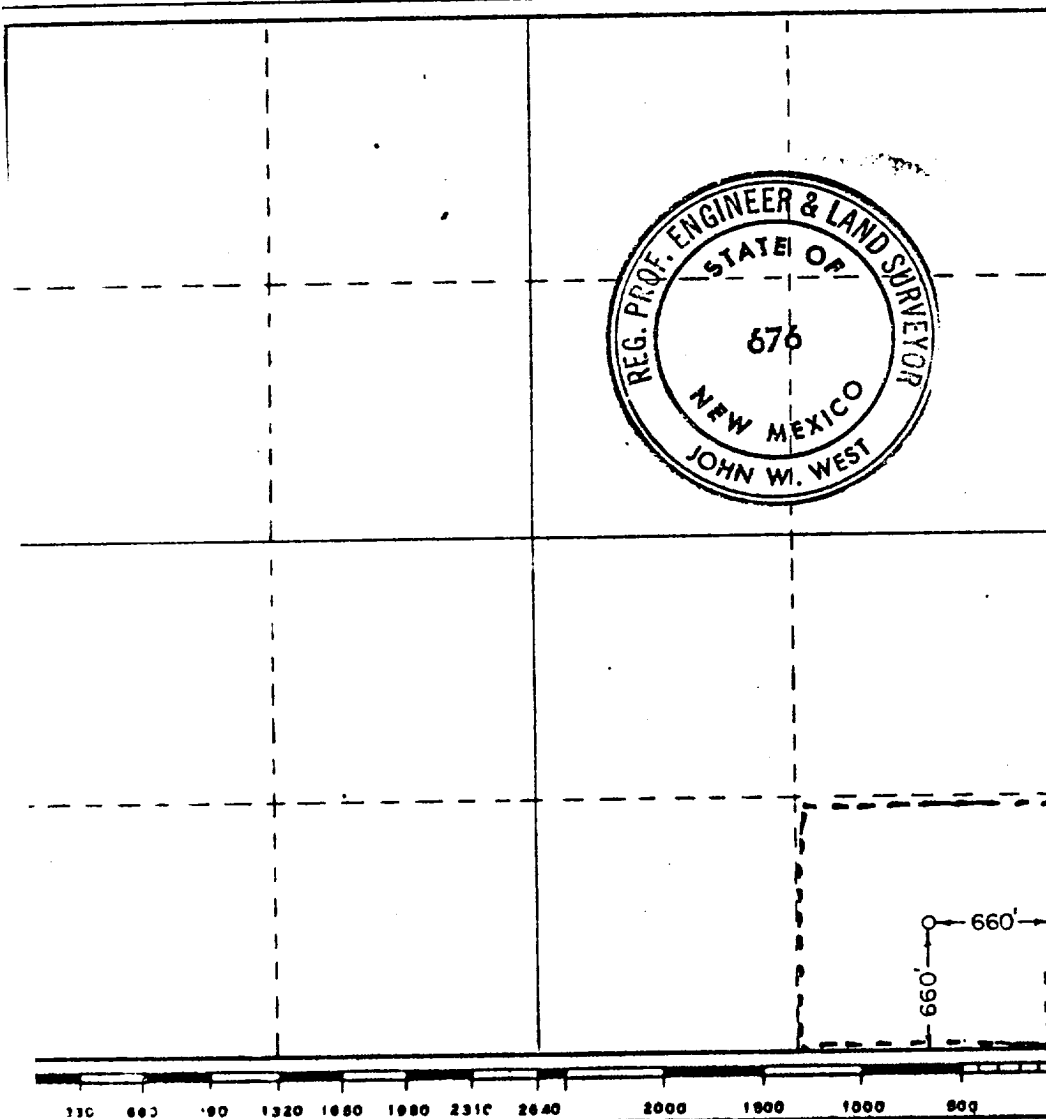
Owner Continental Oil Company		Lease Warren Unit		Well No. 32
Section P	Section 27	Township 20 South	Range 38 East	County Lea
Approximate Section and Well:				
660 feet from the South line and		660 feet from the East line		
Surface Elevation 3546.6	Producing Formation DRINKARD & TUBB		Pool WARREN	Dedicated Acreage 40

- Outline the acreage dedicated to the subject well by colored pencil or hatchure marks on the plat below.
- If more than one lease is dedicated to the well, outline each and identify the ownership thereof (both as to working interest and royalty).
- If more than one lease of different ownership is dedicated to the well, have the interests of all owners been consolidated by communitization, unitization, force-pooling, etc?

☐ Yes ☐ No If answer is "yes," type of consolidation _____

If answer is "no," list the owners and tract descriptions which have actually been consolidated. (Use reverse side of this form if necessary.) _____

No allowable will be assigned to the well until all interests have been consolidated (by communitization, unitization, forced-pooling, or otherwise) or until a non-standard unit, eliminating such interests, has been approved by the Commission.



CERTIFICATION

I hereby certify that the information contained herein is true and complete to the best of my knowledge and belief.

John West
Name

SR. ANALYST
Position

CONTINENTAL Oil Co.
Company

4-15-75
Date

I hereby certify that the well location shown on this plat was plotted from field notes of actual surveys made by me or under my supervision, and that the same is true and correct to the best of my knowledge and belief.

Date Surveyed

April 12, 1975

Registered Professional Engineer and/or Land Surveyor

John West
Certificate No. **676**

RECEIVED

MAY 21 1975

OIL CONSERVATION COMM.
HOBBS, N. M.

113