

NO. OF COPIES RECEIVED	
DISTRIBUTION	
SANTA FE	
FILE	
U.S.G.S.	
LAND OFFICE	
OPERATOR	

NEW MEXICO OIL CONSERVATION COMMISSION

Form C-101
Revised 1-1-65

5A. Indicate Type of Lease	
STATE <input type="checkbox"/>	FEE <input checked="" type="checkbox"/>

5. State Oil & Gas Lease No.

APPLICATION FOR PERMIT TO DRILL, DEEPEN, OR PLUG BACK

1a. Type of Work DRILL <input checked="" type="checkbox"/> DEEPEN <input type="checkbox"/> PLUG BACK <input type="checkbox"/>		7. Unit Agreement Name Central Drinkard Unit
b. Type of Well OIL WELL <input type="checkbox"/> GAS WELL <input checked="" type="checkbox"/> OTHER <input type="checkbox"/> SINGLE ZONE <input checked="" type="checkbox"/> MULTIPLE ZONE <input type="checkbox"/>		8. Farm or Lease Name
2. Name of Operator Gulf Oil Corporation		9. Well No. 408
3. Address of Operator Box 670, Hobbs, New Mexico 88240		10. Field and Pool, or Wildcat Drinkard
4. Location of Well UNIT LETTER D LOCATED 972 FEET FROM THE North LINE AND 1305 FEET FROM THE West LINE OF SEC. 28 TWP. 21-S RGE. 37-E NMPM		12. County Lea
19. Proposed Depth 6500'		19A. Formation Drinkard
20. Rotary or C.T. Rotary		
21. Elevations (Show whether DF, RT, etc.) 3458' GL	21A. Kind & Status Plug. Bond Blanket	22. Approx. Date Work will start January 1, 1976

23.

PROPOSED CASING AND CEMENT PROGRAM

SIZE OF HOLE	SIZE OF CASING	WEIGHT PER FOOT	SETTING DEPTH	SACKS OF CEMENT	EST. TOP
11"	8-5/8"	24#	1150'	Circulate	
7-7/8"	5-1/2"	15.50#	6500' *	Base of Salt	

BOP:
See Drawing No. 3 attached.

* Will set DV tool at 1200' and circulate cement.

NOT VALID
UNLESS
COMMENCED

EXPIRES 3-30-76

IN ABOVE SPACE DESCRIBE PROPOSED PROGRAM: IF PROPOSAL IS TO DEEPEN OR PLUG BACK, GIVE DATA ON PRESENT PRODUCTIVE ZONE AND PROPOSED NEW PRODUCTIVE ZONE. GIVE BLOWOUT PREVENTER PROGRAM, IF ANY.

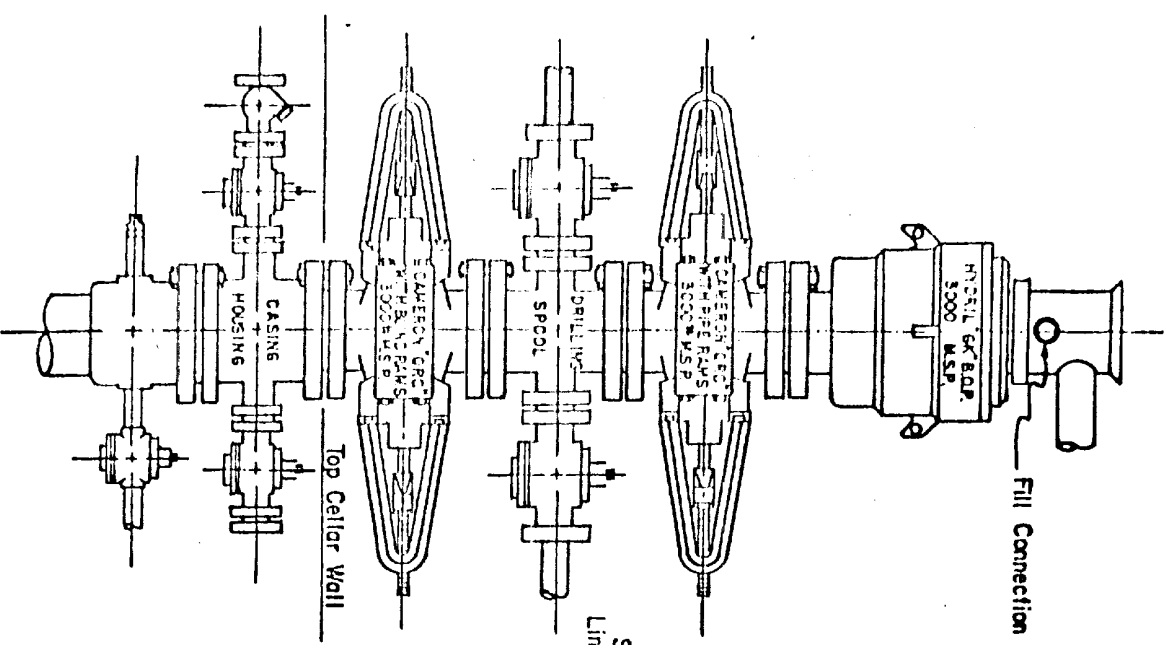
I hereby certify that the information above is true and complete to the best of my knowledge and belief.

Signed [Signature] Title Area Production Manager Date December 3, 1975

(This space for State Use)

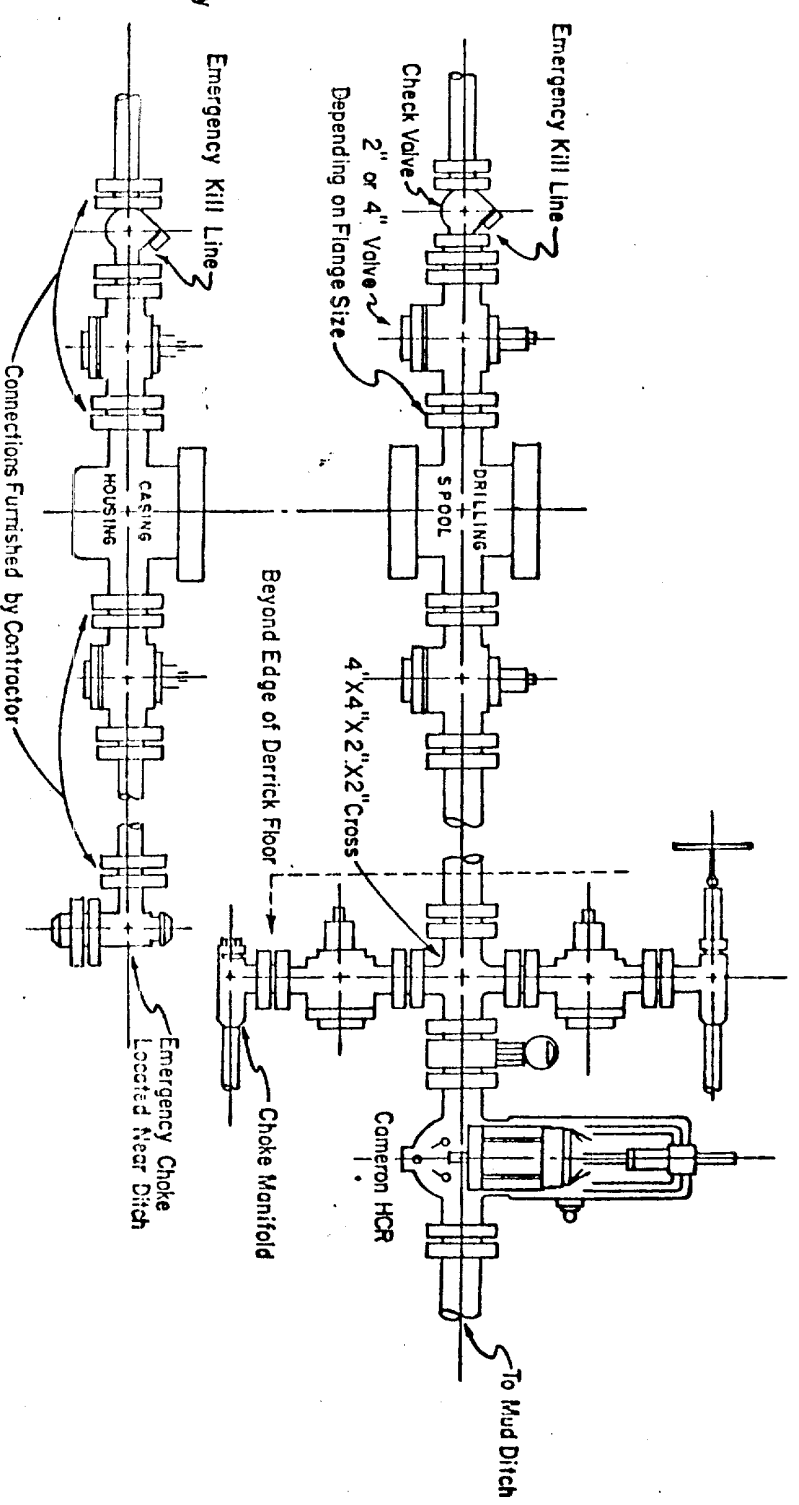
APPROVED BY [Signature] TITLE _____ DATE _____

CONDITIONS OF APPROVAL, IF ANY:



**3,000 PSI WORKING PRESSURE
BLOWOUT PREVENTER HOOK-UP**

Series 900 Flanges, or Better



**3,000 PSI WORKING PRESSURE
KILL, CHOKES, AND FILL CONNECTIONS**

API Series 900 Flanges or Better

DETAIL OF 4" FLOW LINE CHOKES ASSEMBLY

Minimum assembly for 3000 PSI working pressure will consist of three preventers. The bottom and middle preventers may be Cameron ORC, Cameron Type F single or Shafter Hydraulic single, and the upper will be Hydril GK. In lieu of the drilling spool, the flanged outlets from the Cameron Type F single open face flanged preventer, provided the outlets are the correct size, may be used for the four-inch flow line and the two-inch kill line.

Size 12-inch preventers may be used for work down through 8-5/8-inch casing. Size 10-inch preventers may be used for work down through 7-5/8-inch casing. Size six-inch preventers are to be used for work through 7-inch and 5-1/2-inch casings.

Minimum operating equipment for the preventers will be: (1) An air operated pump and (2) An accumulator(s) with some means of obtaining a fluid charge. A closed fluid system is recommended. The closing manifold and remote closing manifold will have a separate four-way valve for each pressure operated device and a Hydril regulator will be provided. Sufficient fluid capacity in the accumulator(s) shall be available to close all the pressure operated devices at the same time with 25 percent reserve. Gulf No. 561 hydraulic oil shall be used as the operating fluid. The four-inch flow line from the preventers shall be supported by a metal stand or reinforced concrete. All valves throughout the assembly shall be selected for operation in both gas and fluids.

The ram type preventers and the Cameron HCR valve will be provided with stem extensions, universal joints, if needed, and operating wheels.