

UNITED STATES
DEPARTMENT OF THE INTERIOR
GEOLOGICAL SURVEY

APPLICATION FOR PERMIT TO DRILL, DEEPEN, OR PLUG BACK

1a. TYPE OF WORK

DRILL ☒DEEPEN ☐PLUG BACK ☐

b. TYPE OF WELL

OIL
WELL ☒GAS
WELL ☐

OTHER

SINGLE
ZONE ☐MULTIPLE
ZONE ☒

2. NAME OF OPERATOR

CONTINENTAL OIL COMPANY

3. ADDRESS OF OPERATOR

Box 460, HOBBS, N.M. 88240

4. LOCATION OF WELL (Report location clearly and in accordance with any State requirements.)*

At surface

1980' FNL & 1980' FEL OF SEC. 27

At proposed prod. zone

14. DISTANCE IN MILES AND DIRECTION FROM NEAREST TOWN OR POST OFFICE*

15. DISTANCE FROM PROPOSED*

LOCATION TO NEAREST
PROPERTY OR LEASE LINE, FT.
(Also to nearest drilg. unit line, if any)

18. DISTANCE FROM PROPOSED LOCATION*

TO NEAREST WELL, DRILLING, COMPLETED,
OR APPLIED FOR, ON THIS LEASE, FT.

21. ELEVATIONS (Show whether DF, RT, GR, etc.)

3540'

16. NO. OF ACRES IN LEASE

17. NO. OF ACRES ASSIGNED
TO THIS WELL

40

19. PROPOSED DEPTH

7100'

20. ROTARY OR CABLE TOOLS

ROTARY

22. APPROX. DATE WORK WILL START*

1-18-75

23. PROPOSED CASING AND CEMENTING PROGRAM

SIZE OF HOLE	SIZE OF CASING	WEIGHT PER FOOT	SETTING DEPTH	QUANTITY OF CEMENT
14 3/4"	9 5/8" H-40	32.30#	1475'	1025 SKS. Circ.
8 3/4"	7" K-55	23# & 26#	7100'	1325 SKS.

It is proposed to drill a straight hole to a TD of
7100' & complete as a Tubbs & Blinberry dual oil well.

Mud Program: 0-1475' 8.5#-9.0# Spud Mud; 1475'-7100'
9.0#-10.0# Salt Gel

Sec Attached for Blowout Preventer Program

Cement behind 7" casing
must fill to BASE

IN ABOVE SPACE DESCRIBE PROPOSED PROGRAM: If proposal is to deepen or plug back, give data on present productive zone and proposed new productive zone. If proposal is to drill or deepen directionally, give pertinent data on subsurface locations and measured and true vertical depths. Give blowout preventer program, if any.

24.

SIGNED

(This space for Federal or State office use)

PERMIT NO.

APPROVED BY

CONDITIONS OF APPROVAL, IF ANY:

TITLE

SR. ANALYST

DATE

11-25-75

APPROVED
AS AMENDED
DEC 23 1975
ARTHUR R. BROWN
DISTRICT ENGINEER

USGS-6, NMU-4, File

*See Instructions On Reverse Side

NEW MEXICO OIL CONSERVATION COMMISSION
WELL LOCATION AND ACREAGE DEDICATION PLAT

Form C-102
Supersedes C-128
Effective 1-1-65

All distances must be from the outer boundaries of the Section.

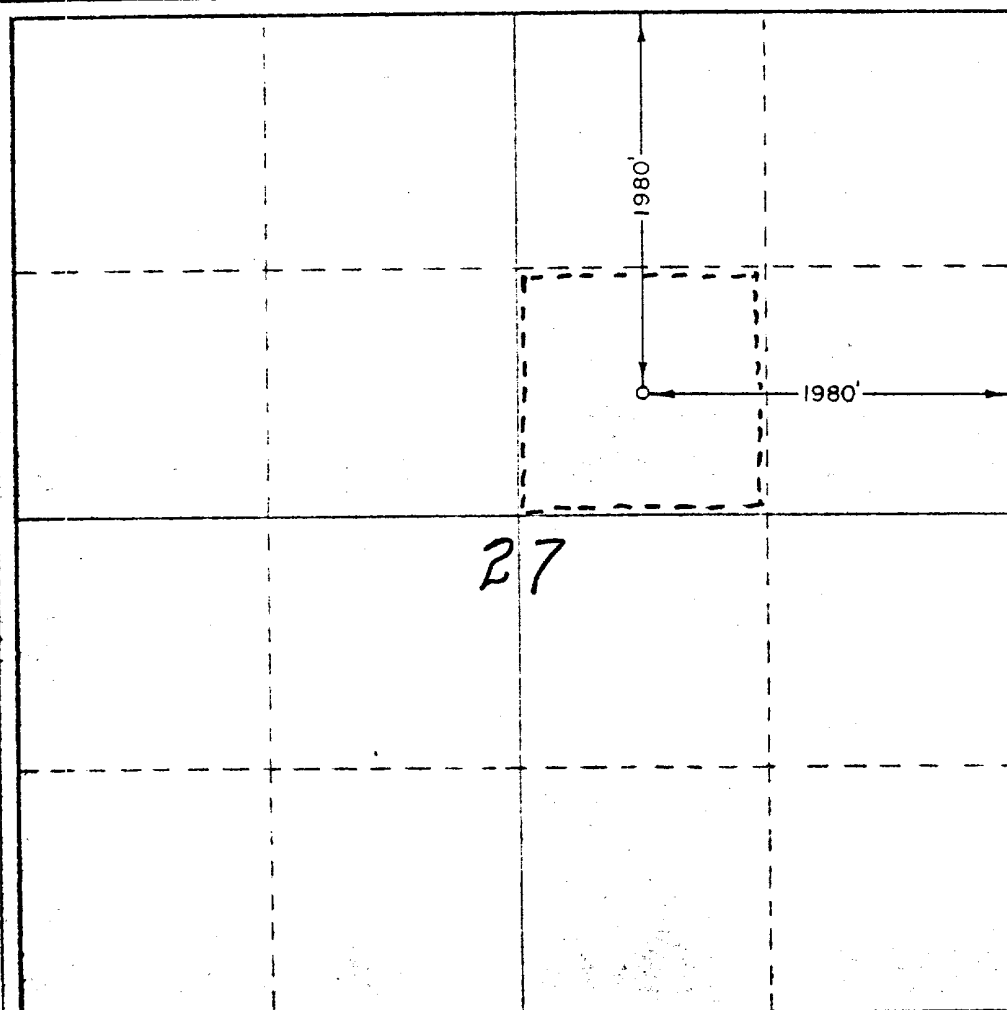
Operator Continental Oil Company			Lease Warren Unit Account 1		Well No. 40
Unit Letter G	Section 27	Township 20 South	Range 38 East	County Lea	
Actual Footage Location of Well:					
1980 feet from the North line and		1980 feet from the East line			
Ground Level Elev. 3540.1	Producing Formation TUBB & BLINERY	Pool WARREN TUBB & WARREN BLINERY	Dedicated Acreage: 40 Acres		

1. Outline the acreage dedicated to the subject well by colored pencil or hachure marks on the plat below.
2. If more than one lease is dedicated to the well, outline each and identify the ownership thereof (both as to working interest and royalty).
3. If more than one lease of different ownership is dedicated to the well, have the interests of all owners been consolidated by communitization, unitization, force-pooling, etc?

☐ Yes ☐ No If answer is "yes," type of consolidation _____

If answer is "no," list the owners and tract descriptions which have actually been consolidated. (Use reverse side of this form if necessary.) _____

No allowable will be assigned to the well until all interests have been consolidated (by communitization, unitization, forced-pooling, or otherwise) or until a non-standard unit, eliminating such interests, has been approved by the Commission.



CERTIFICATION

I hereby certify that the information contained herein is true and complete to the best of my knowledge and belief.

Name *[Signature]*
Position **SR. ANALYST**
Company **CONTINENTAL OIL CO.**
Date **11-25-75**

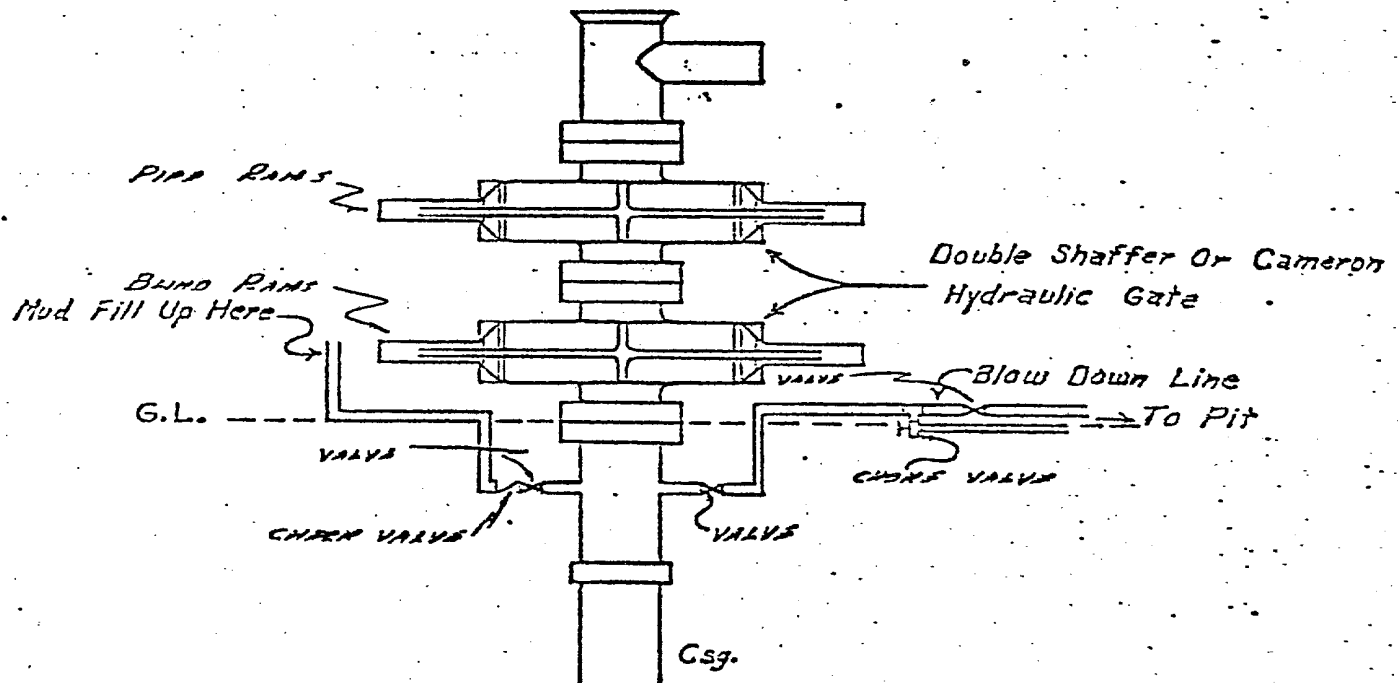
I hereby certify that the well location shown on this plat was plotted from field notes of actual surveys made by me or under my supervision, and that the same is true and correct to the best of my knowledge and belief.

Date **November 20, 1975**
Registered Professional Engineer
and Land Surveyor
[Signature]
Certification No. **W. WEST**

0 330 660 990 1320 1650 1980 2310 2640 2970 3300 3630 3960 4290 4620 4950 5280 5610 5940 6270 6600

CONTINENTAL OIL COMPANY
Blow-out Preventer Specifications

WARREN UNIT A/C 1 No. 40



NOTE:

Manual and hydraulic controls with closing unit no less than 75' from well head.

Development Plan For Surface Use

1. Existing roads including location of the exit from the main highway

See Attached Map

2. Planned access roads

See Below and Attached Map

(a) Length and width of new road (b) Roads will be compacted ~~or surfaced~~

1200' x 12'

3. Location of existing wells

See Attached Map

4. Lateral roads to well location

See Attached Map

5. Location of tank batteries and flowlines

See Attached Map

6. Location and type of water supply

() Water will be hauled to location (✓) See attached map for location of proposed water lines

7. Methods for handling waste disposal

All litter and scrap material will be disposed of by burying in a trash pit with a minimum cover of 24 inches of dirt.

8. and 9. Location of camps and airstrips

There are no camps or airstrips contemplated to serve this lease.

10. Location of layout to include position of the rig, mud tanks, reserve pits, burn pits, pipe racks, etc.

See Below and Attached plat

(a) Size of drilling pad (b) Drilling pad ✓ compacted ~~or surfaced~~

200' x 250'

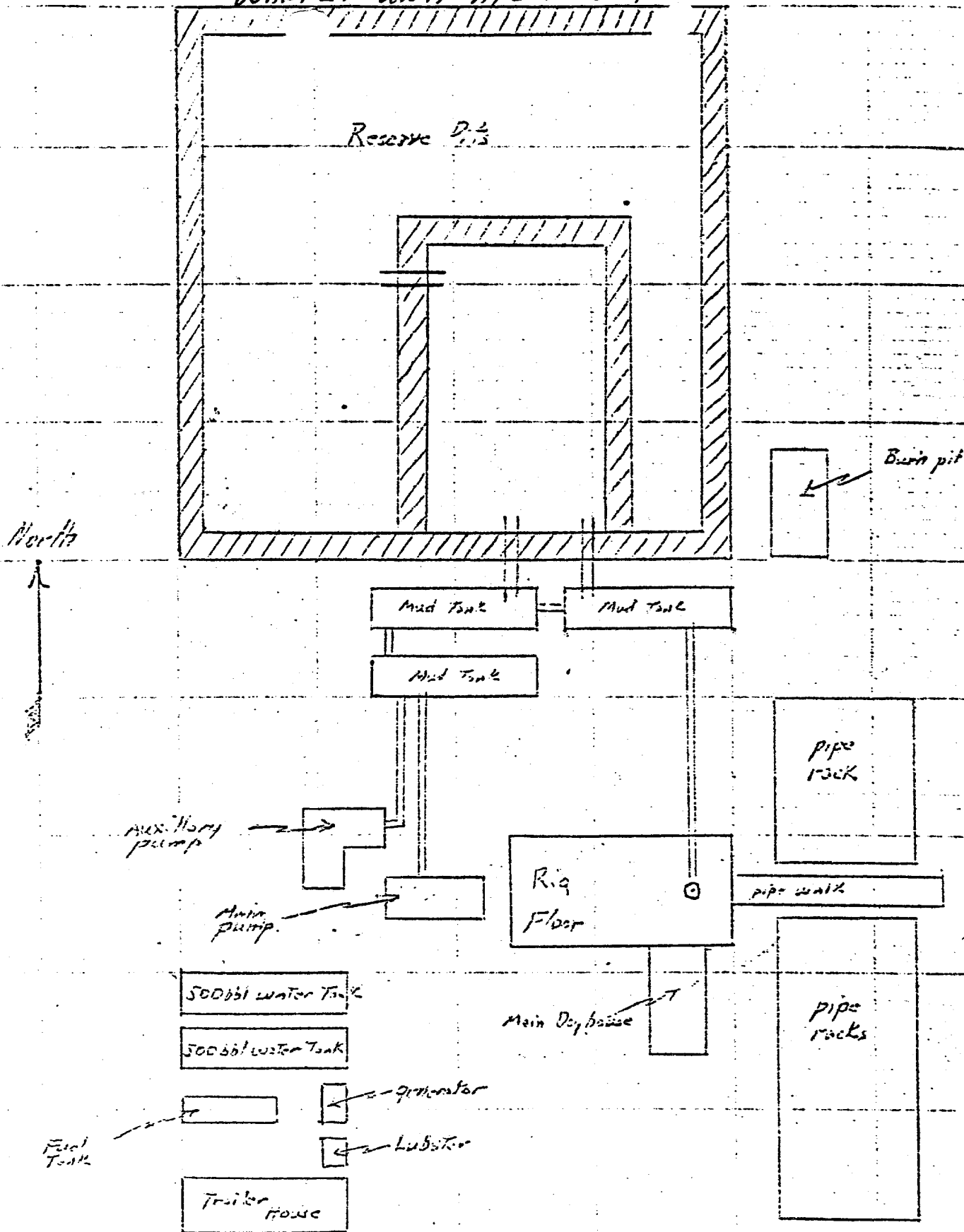
11. Plans for restoration of the surface

Surface will be levelled and properly conditioned.

12. Other information that may be used in evaluating the impact on environment

The terrain in this area is generally flat with very little vegetation. No streams or other major water sheds are located in this area.

WARREN UNIT A/C 1 NO. 40



Scale 1" = 25 feet

WARREN UNIT No. 40

R 38 E

WARREN UNIT AREA
LEA COUNTY, NEW MEXICO
Scale 1"=2000'

