

IP (Yates) Perfs 3222-3483 P 132 MCFGPD + 12 BW. Pot based  
on 24 hr test. GOR Dry; gty (Gas) (NR)

1-5-36 NM  
IC 30-025-70061-82

STATE OF NEW MEXICO  
ENERGY AND MINERALS DEPARTMENT

OIL CONSERVATION DIVISION

P. O. BOX 2088

SANTA FE, NEW MEXICO 87501

Form C-102  
Revised 10-1-

All distances must be from the outer boundaries of the Section.

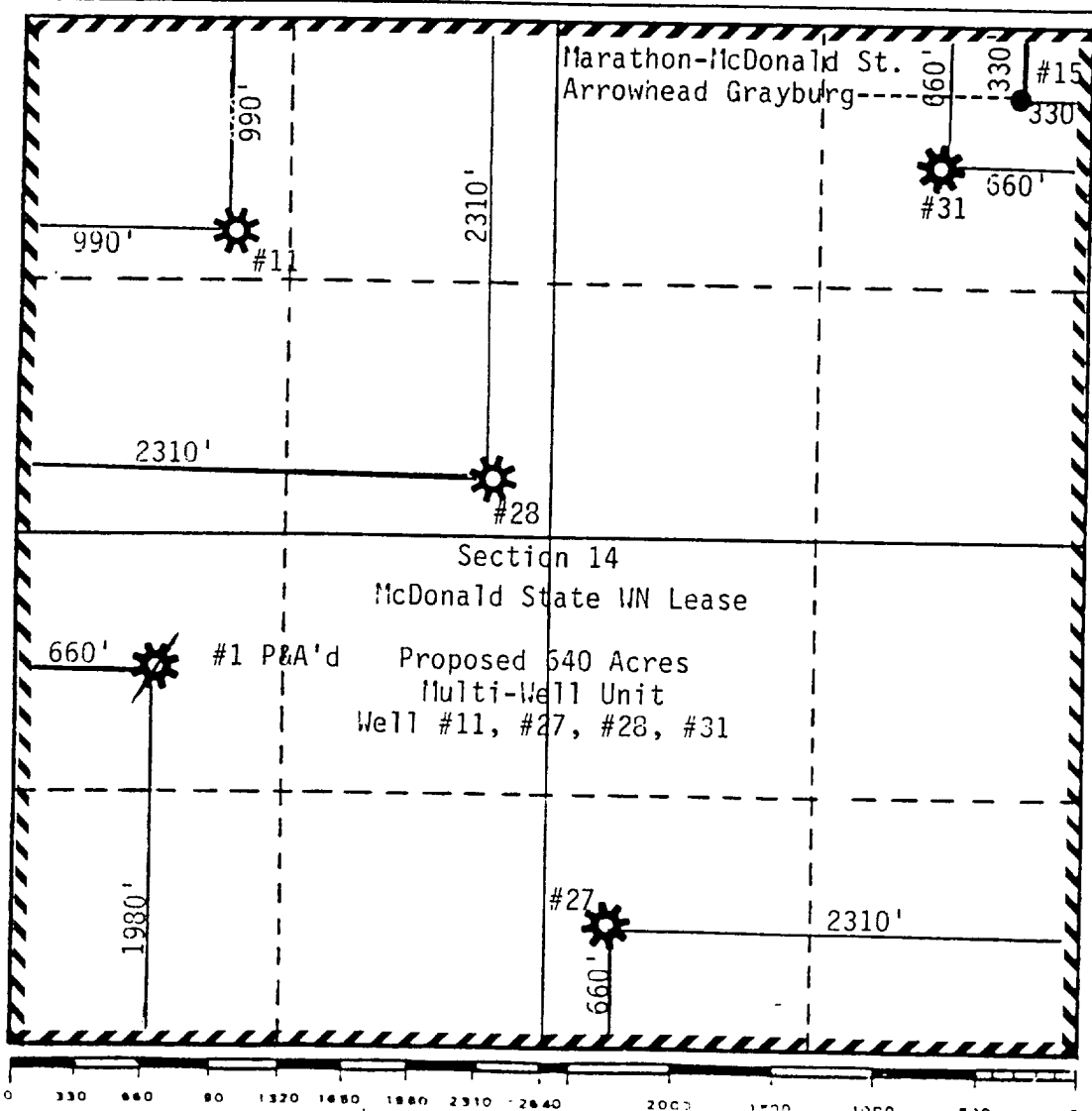
Operator ARCO Oil and Gas Company				Lease McDonald State WN		Well No. 11, 27, 28, 31	
Unit Letter D, F, O, A	Section 14	Township 22S	Range 36E	County Lea			
Actual Footage Location of Well: #11: 990' FNL & 990' FWL; #27: 660' FSL & 2310' FEL; #28: 2310' FNL & 2310' FWL #31: 660' FNL & 660' FEL feet from the line and feet from the line							
Ground Level Elev.		Producing Formation Yates/Seven Rivers		Pool Jalmat Gas		Dedicated Acreage: 640 R-4984-A Acres	

1. Outline the acreage dedicated to the subject well by colored pencil or hachure marks on the plat below.
2. If more than one lease is dedicated to the well, outline each and identify the ownership thereof (both as to working interest and royalty).
3. If more than one lease of different ownership is dedicated to the well, have the interests of all owners been consolidated by communitization, unitization, force-pooling, etc?

☐ Yes ☐ No If answer is "yes," type of consolidation \_\_\_\_\_

If answer is "no," list the owners and tract descriptions which have actually been consolidated. (Use reverse side of this form if necessary.) \_\_\_\_\_

No allowable will be assigned to the well until all interests have been consolidated (by communitization, unitization, forced-pooling, or otherwise) or until a non-standard unit, eliminating such interests, has been approved by the Division



CERTIFICATION

I hereby certify that the information contained herein is true and complete to the best of my knowledge and belief.

*Evelyn E. Gilson*  
Name

Evelyn E. Gilson

Position

Engr. Tech.

Company

ARCO Oil and Gas Company

Date

August 24, 1988

I hereby certify that the well location shown on this plat was plotted from field notes of actual surveys made by me or under my supervision, and that the same is true and correct to the best of my knowledge and belief.

Date Surveyed

Registered Professional Engineer and/or Land Surveyor

Certificate No.

## OIL CONSERVATION DIVISION

STATE OF NEW MEXICO  
ENERGY AND MINERALS DEPARTMENTP. O. BOX 2088  
SANTA FE, NEW MEXICO 87501Form C-102  
Revised 10-1-78

All distances must be from the outer boundaries of the Section.

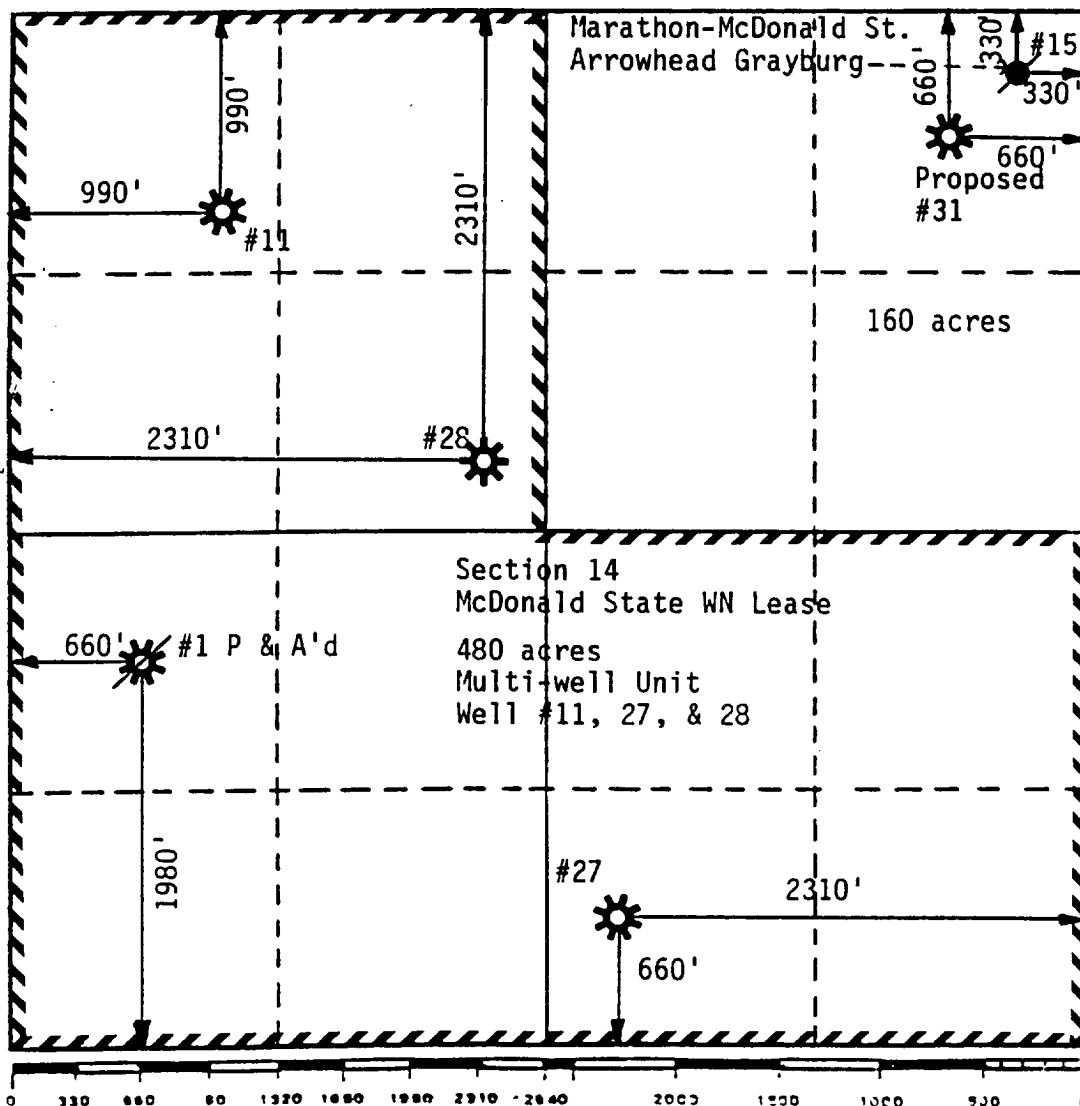
Operator ARCO Oil and Gas Company			Lease McDonald State <sup>WN</sup> <del>WN</del>		Well No. 11, 27, 28
Unit Letter D, F, O	Section 14	Township 22S	Range 36E	County Lea	
Actual Footage Location of Wells: #11: 990' FNL & 990' FWL; #27: 660' FSL & 2310' FEL; #28: 2310' FNL & 2310' FWL					
Ground Level Elev.	Producing Formation Yates/Seven Rivers	Pool Jalmat Gas	Dedicated Acreage: 480 Acres		

1. Outline the acreage dedicated to the subject well by colored pencil or hatchure marks on the plat below.
2. If more than one lease is dedicated to the well, outline each and identify the ownership thereof (both as to working interest and royalty).
3. If more than one lease of different ownership is dedicated to the well, have the interests of all owners been consolidated by communitization, unitization, force-pooling, etc?

☐ Yes ☐ No If answer is "yes," type of consolidation \_\_\_\_\_

If answer is "no," list the owners and tract descriptions which have actually been consolidated. (Use reverse side of this form if necessary.) \_\_\_\_\_

No allowable will be assigned to the well until all interests have been consolidated (by communitization, unitization, forced-pooling, or otherwise) or until a non-standard unit, eliminating such interests, has been approved by the Division.



## CERTIFICATION

I hereby certify that the information contained herein is true and complete to the best of my knowledge and belief.

*Cindy W. Ellis*

Name  
Cindy W. Ellis

Position  
Senior Engineer

Company  
ARCO Oil and Gas Company

Date  
April 21, 1988

I hereby certify that the well location shown on this plat was plotted from field notes of actual surveys made by me or under my supervision, and that the same is true and correct to the best of my knowledge and belief.

Date Surveyed

Registered Professional Engineer  
and/or Land Surveyor

Certificate No.



STATE OF NEW MEXICO  
ENERGY, MINERALS AND NATURAL RESOURCES DEPARTMENT  
OIL CONSERVATION DIVISION  
HOBBS DISTRICT OFFICE

GARREY CARRUTHERS  
GOVERNOR

June 13, 1988

POST OFFICE BOX 1980  
HOBBS, NEW MEXICO 88241-1980  
(505) 393-6161

ARCO Oil & Gas Company  
Box 1610  
Midland, TX 79702

Attn: Ken Gosnell

Re: NSP-1536  
McDonald WN #11-D, #27-O, #28-F 14-22-36

Gentlemen:

NSP-1536 approved a 480-acre non-standard proration unit for the above-referenced wells. It will be necessary for you to file revised acreage dedication plats for these wells reducing the acreage from 640 to 480. These revised plats will be required at the time you file your completion for the McDonald WN #31 since the acreage dedicated to it is part of this section which has been dedicated to the referenced wells.

Very truly yours,

OIL CONSERVATION DIVISION

Jerry Sexton  
Supervisor, District I

JS/ed

NEW MEXICO OIL CONSERVATION COMMISSION  
WELL LOCATION AND ACREAGE DEDICATION PLAT

Form C-102  
Supersedes C-128  
Effective 1-1-65

All distances must be from the outer boundaries of the Section

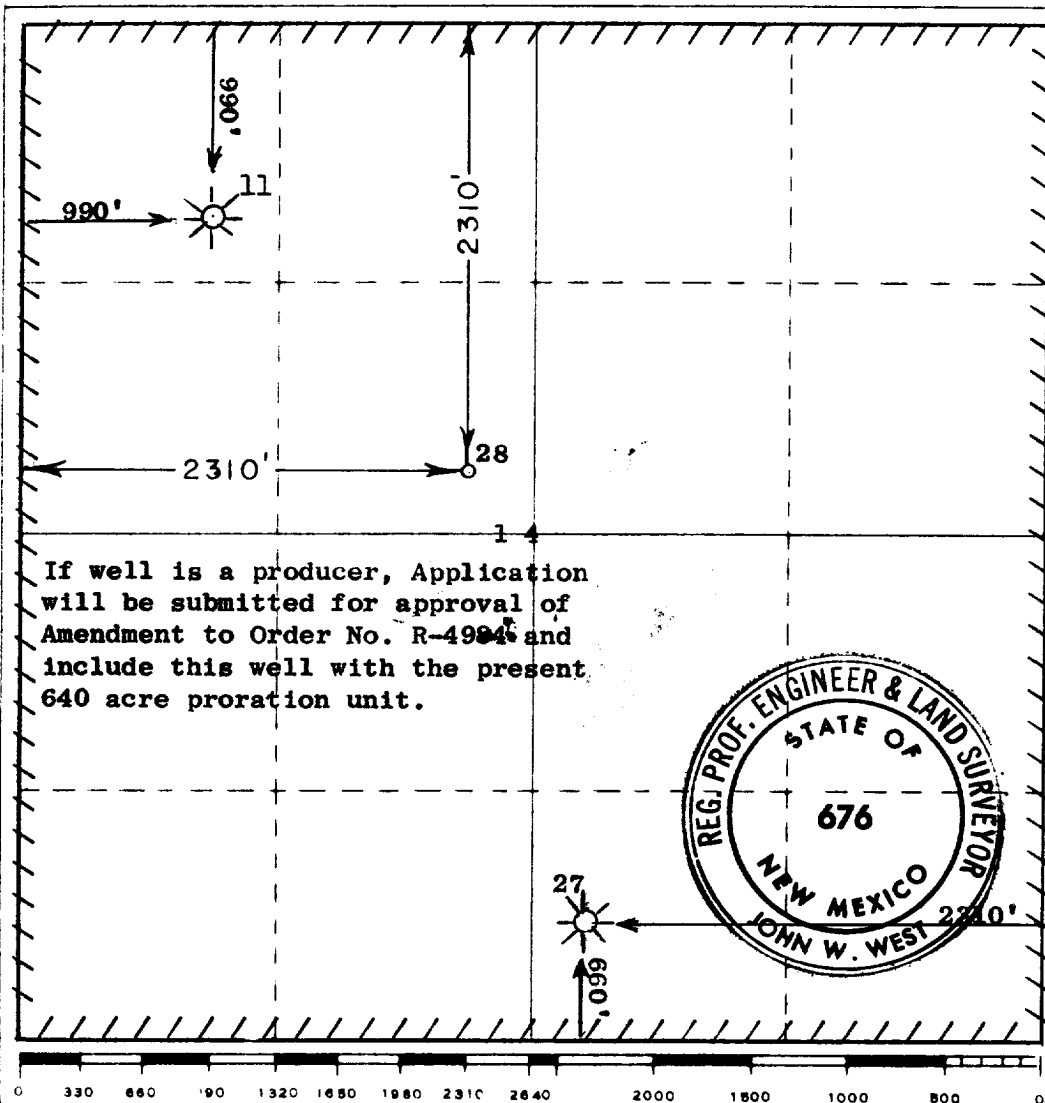
Operator <b>ATLANTIC RICHFIELD CO.</b>			Lease <b>MCDONALD WN STATE</b>		Well No. <b>28</b>
Tract Letter <b>F</b>	Section <b>14</b>	Township <b>22 SOUTH</b>	Range <b>36 EAST</b>	County <b>LEA</b>	
Actual Footage Location of Well: <b>2310</b> feet from the <b>NORTH</b> line and <b>2310</b> feet from the <b>WEST</b> line					
Ground Level Elev. <b>3519.0</b>	Producing Formation <b>Yates Gas</b>	Pool <b>Jalmat</b>	Dedicated Acreage: <b>640</b>		

1. Outline the acreage dedicated to the subject well by colored pencil or hachure marks on the plat below.
2. If more than one lease is dedicated to the well, outline each and identify the ownership thereof (both as to working interest and royalty).
3. If more than one lease of different ownership is dedicated to the well, have the interests of all owners been consolidated by communitization, unitization, force-pooling, etc?

☐ Yes ☐ No If answer is "yes," type of consolidation \_\_\_\_\_

If answer is "no," list the owners and tract descriptions which have actually been consolidated. (Use reverse side of this form if necessary.) \_\_\_\_\_

No allowable will be assigned to the well until all interests have been consolidated (by communitization, unitization, forced-pooling, or otherwise) or until a non-standard unit, eliminating such interests, has been approved by the Commission.



If well is a producer, Application will be submitted for approval of Amendment to Order No. R-4994 and include this well with the present 640 acre proration unit.

CERTIFICATION

I hereby certify that the information contained herein is true and complete to the best of my knowledge and belief.

Name  
*John West*  
Position  
**Dist. Drlg. Supv.**  
Company  
**Atlantic Richfield Company**  
Date  
**6/11/76**

I hereby certify that the well location shown on this plat was plotted from field notes of actual surveys made by me or under my supervision, and that the same is true and correct to the best of my knowledge and belief.

Date Surveyed  
**JUNE 10, 1976**

Registered Professional Engineer and/or Land Surveyor

*John W. West*  
Certificate No. **676**

RECEIVED

JUL 11 1976

OIL CONSERVATION COMM.  
HOBBS, N. M.

173