

NO. OF COPIES RECEIVED	
DISTRIBUTION	
SANTA FE	
FILE	
U.S.G.S.	
LAND OFFICE	
OPERATOR	

NEW MEXICO OIL CONSERVATION COMMISSION

Form C-101  
Revised 11-65

5A. Indicate Type of Lease	
STATE <input type="checkbox"/>	FEE <input checked="" type="checkbox"/>

5. State Oil & Gas Lease No.

APPLICATION FOR PERMIT TO DRILL, DEEPEN, OR PLUG BACK

1a. Type of Work b. Type of Well OIL WELL <input type="checkbox"/> GAS WELL <input checked="" type="checkbox"/> OTHER <input type="checkbox"/> DRILL <input checked="" type="checkbox"/> DEEPEN <input type="checkbox"/> PLUG BACK <input type="checkbox"/> SINGLE ZONE <input checked="" type="checkbox"/> MULTIPLE ZONE <input type="checkbox"/>				7. Unit Agreement Name Central Drinkard Unit	
2. Name of Operator Gulf Oil Corporation				8. Name or Lease Name	
3. Address of Operator Box 670, Hobbs, New Mexico 88240				9. Well No. 407	
4. Location of Well UNIT LETTER J** LOCATED 1475 FEET FROM THE South LINE AND 1440' FEET FROM THE East LINE OF SEC. 33 TWP. 21-S RGE. 37-E NMPM				10. Field and Pool, or Wildcat Drinkard	
				12. County Lea	
19. Proposed Depth 6625'		19A. Formation Drinkard		20. Rotary or C.T. Rotary	
21. Elevations (show whether DF, RT, etc.) 3437' GL		21A. Kind & Status Plug. Bend Blanket		22. Approx. Date Work will start October 10, 1976	

23.

PROPOSED CASING AND CEMENT PROGRAM

SIZE OF HOLE	SIZE OF CASING	WEIGHT PER FOOT	SETTING DEPTH	SACKS OF CEMENT	EST. TOP
11"	8-5/8"	24#	1200'	Circulate	
7-7/8"	5-1/2"	15.5#	6625'*	Circulate	

Gas is Dedicated

\* Will set DV tool at approximately 2400' and circulate cement.

BOP: See Drawing No. 3 attached.

\*\* Well to be directionally drilled with bottom of hole to be within 100' of 1110" FSL & 700' FEL, Section 33, 21-S, 37-E, as required by R-5263.

IN ABOVE SPACE DESCRIBE PROPOSED PROGRAM: IF PROPOSAL IS TO DEEPEN OR PLUG BACK, GIVE DATA ON PRESENT PRODUCTIVE ZONE AND PROPOSED NEW PRODUCTIVE ZONE. GIVE GLOVEOUT PREVENTER PROGRAM, IF ANY.

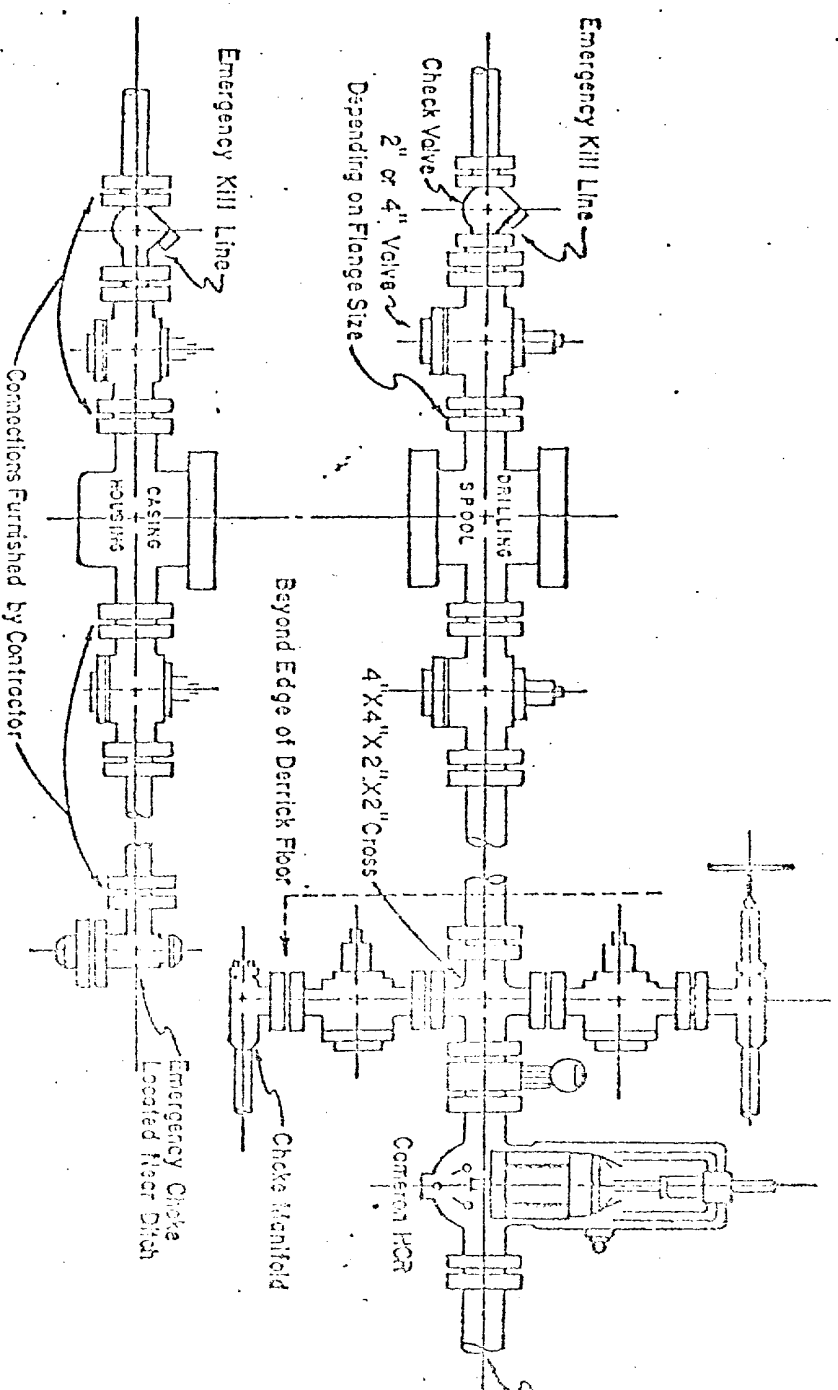
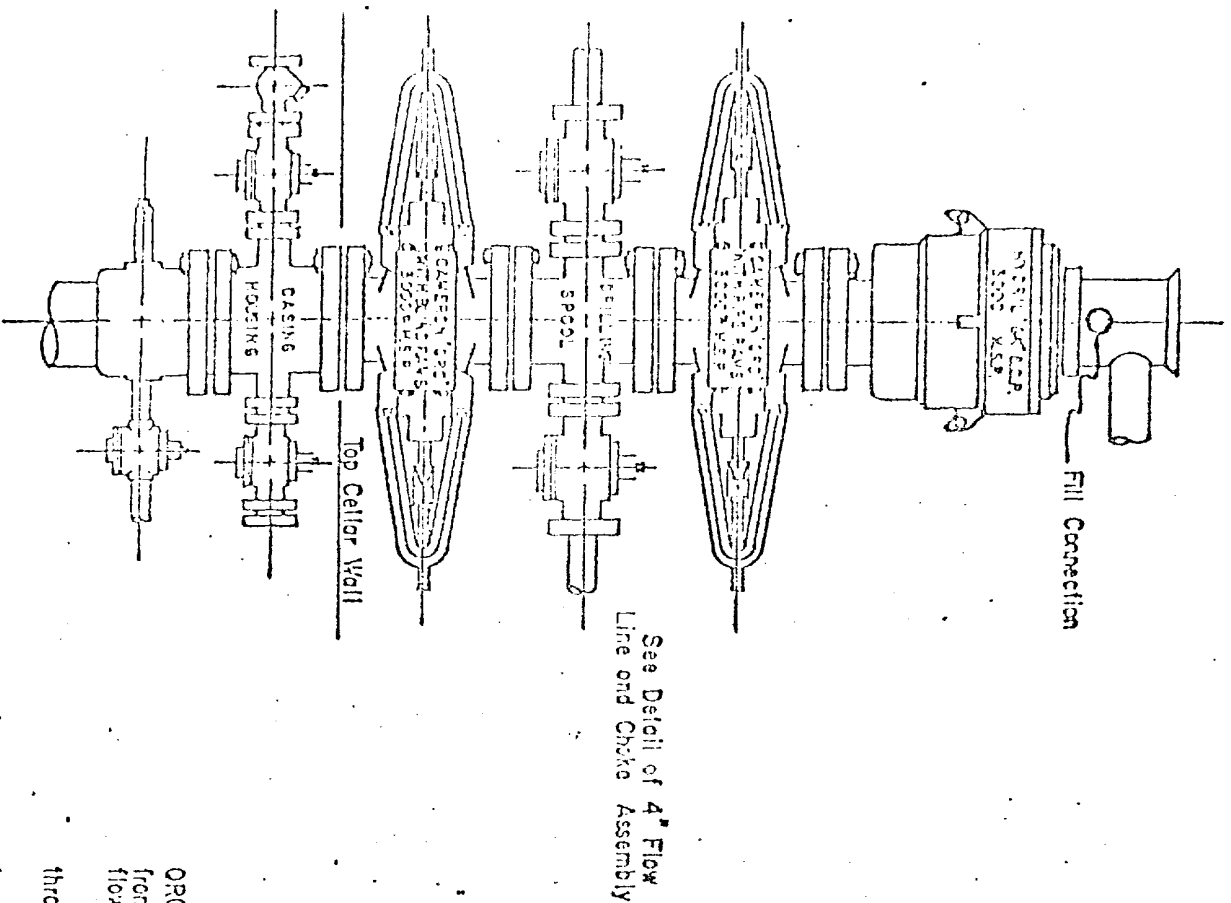
I hereby certify that the information above is true and complete to the best of my knowledge and belief.

Signed C. B. Boland Title Area Production Manager Date September 13, 1976

(This space for State Use)

APPROVED BY Jerry Sexton TITLE SUPERVISOR DISTRICT 1 DATE SEP 17 1976

CONDITIONS OF APPROVAL, IF ANY:



3,000 PSI WORKING PRESSURE  
KILL, CHOKE, AND FILL CONNECTIONS  
API Series 900 Flanges or Better

DETAIL OF 4" FLOW LINE CHOKE ASSEMBLY

Minimum assembly for 3000 PSI working pressure will consist of three preventers. The bottom and middle preventers may ORC, Cameron Type F single or Shafter Hydraulic single, and the upper will be Hydril GK. In lieu of the drilling spool, the flanged from the Cameron Type F single open face flanged preventer, provided the outlets are the correct size, may be used for the flow line and the two-inch kill line.

Size 12-inch preventers may be used for work down through 8-5/8-inch casing. Size 10-inch preventers may be used for work through 7-5/8-inch casing. Size six-inch preventers are to be used for work through 7-inch and 5-1/2-inch casings.

Minimum operating equipment for the preventers will be: (1) An air operated pump and (2) An accumulator(s) with some means of a fluid charge. A closed fluid system is recommended. The closing manifold and remote closing manifold will have a separate valve for each pressure operated device and a Hydril regulator will be provided. Sufficient fluid capacity in the accumulator(s) shall be able to close all the pressure operated devices of the same time with 25 percent reserve. Gulf No 551 Hydraulic oil shall be used as the operating

The four-inch flow line from the preventers shall be supported by a metal stand or reinforced concrete. All valves throughout assembly shall be selected for operation in both gas and fluids.

The ram type preventers and the Cameron HCR valve will be provided with stem extensions, universal joints, if need operating wheels.

# 3,000 PSI WORKING PRESSURE BLOWOUT PREVENTER HOOK-UP

Series 300 Flanges, or Better

NEW MEXICO OIL CONSERVATION COMMISSION  
WELL LOCATION AND ACREAGE DEDICATION PLAT

Form O-102  
Supersedes L-128  
Effective 10-65

All distances must be from the outer boundaries of the Section.

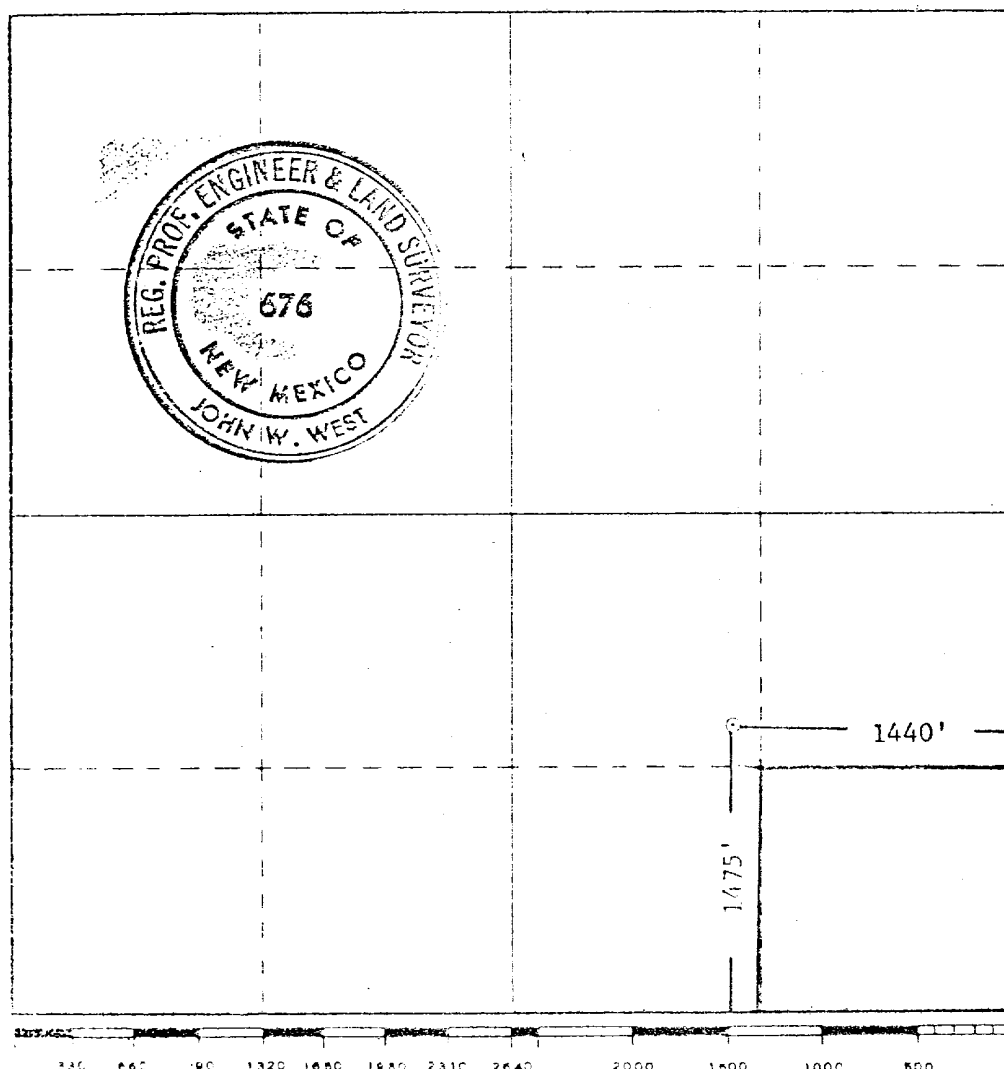
GULF OIL CORP.			Lease CENTRAL DRINKARD UNIT		Acres 407
Section J	Section 33	Township 21 SOUTH	Range 37 EAST	County LEA	
Location of Well: 1475 feet from the SOUTH line and 1440 feet from the EAST line					
Producing Formation 3436.6	Producing Formation		Dedicated Acreage		Acres

- Outline the acreage dedicated to the subject well by colored pencil or hatchure marks on the plat below.
- If more than one lease is dedicated to the well, outline each and identify the ownership thereof (both as to working interest and royalty).
- If more than one lease of different ownership is dedicated to the well, have the interests of all owners been consolidated by communitization, unitization, force-pooling, etc?

☐ Yes ☐ No If answer is "yes," type of consolidation \_\_\_\_\_

If answer is "no," list the owners and tract descriptions which have actually been consolidated. (Use reverse side of this form if necessary.) \_\_\_\_\_

No allowable will be assigned to the well until all interests have been consolidated (by communitization, unitization, forced-pooling, or otherwise) or until a non-standard unit, eliminating such interests, has been approved by the Commission.  
Well to be directionally drilled, R-5263



CERTIFICATION

I hereby certify that the information contained herein is true and complete to the best of my knowledge and belief.

*C. D. Borland*

Name  
C. D. BORLAND  
Position  
Area Production Manager  
Company  
Gulf Oil Corporation  
Date  
September 13, 1976

I hereby certify that the well location shown on this plat was plotted from field notes of actual surveys made by me or under my supervision, and that the same is true and correct to the best of my knowledge and belief.

Date Surveyed  
SEPT. 10, 1976  
Registered Professional Engineer  
and/or Land Surveyor

*John W. West*  
Certificate No. 676