

| | | |
|------------------------|--|--|
| NO. OF COPIES RECEIVED | | |
| DISTRIBUTION | | |
| SANTA FE | | |
| FILE | | |
| U.S.G.S. | | |
| LAND OFFICE | | |
| OPERATOR | | |

NEW MEXICO OIL CONSERVATION COMMISSION

Form C-101
Revised 1-1-65

5A. Indicate Type of Lease
STATE ☐ FEE ☒

5B. State Oil & Gas Lease No.

APPLICATION FOR PERMIT TO DRILL, DEEPEN, OR PLUG BACK

| | | |
|--|--|--|
| 1a. Type of Work DRILL <input checked="" type="checkbox"/> DEEPEN <input type="checkbox"/> PLUG BACK <input type="checkbox"/> | | 7. Unit Agreement Name |
| b. Type of Well OIL WELL <input type="checkbox"/> GAS WELL <input checked="" type="checkbox"/> OTHER <input type="checkbox"/> | | 8. Name of Lease Name Central Drinkard Unit |
| 2. Name of Operator Gulf Oil Corporation | | 9. Well No. 420 |
| 3. Address of Operator Box 670, Hobbs, New Mexico 88240 | | 10. Field and Pool, or Wildcat Drinkard |
| 4. Location of Well UNIT LETTER J** LOCATED 2300 FEET FROM THE South LINE AND 1520 FEET FROM THE East LINE OF SEC. 33 TWP. 21-S RGE. 37-E NMPM | | 12. County Lea |
| 19. Proposed Depth 6765' | | 19A. Formation Drinkard |
| 20. Rotary or C.T. Rotary | | 21. Elevations (Show whether DI, RT, etc.) 3443' GL |
| 21A. Kind & Status Plug. Bond Blanket | | 21B. Drilling Contractor |
| 22. Approx. Date Work will start November 1, 1976 | | |

PROPOSED CASING AND CEMENT PROGRAM

| SIZE OF HOLE | SIZE OF CASING | WEIGHT PER FOOT | SETTING DEPTH | SACKS OF CEMENT | EST. TOP |
|--------------|----------------|-----------------|---------------|-----------------|----------|
| 11" | 8-5/8" | 24# | 1200' | Circulate | |
| 7-7/8" | 5-1/2" | 15.5# | 6765'* | Circulate | |

Gas is Dedicated

* Will set DV tool at approximately 2400' and circulate cement.

BOP: See Drawing No. 3 attached.

** Well to be directionally drilled with bottom of hole to be within 100' of 1790' FNL & 1030' FEL, Section 33, 21-S, 37-E, as required by R-5263.

IN ABOVE SPACE DESCRIBE PROPOSED PROGRAM: IF PROPOSAL IS TO DEEPEN OR PLUG BACK, GIVE DATA ON PRESENT PRODUCTIVE ZONE AND PROPOSED NEW PRODUCTIVE ZONE. GIVE BLOWOUT PREVENTER PROGRAM, IF ANY.

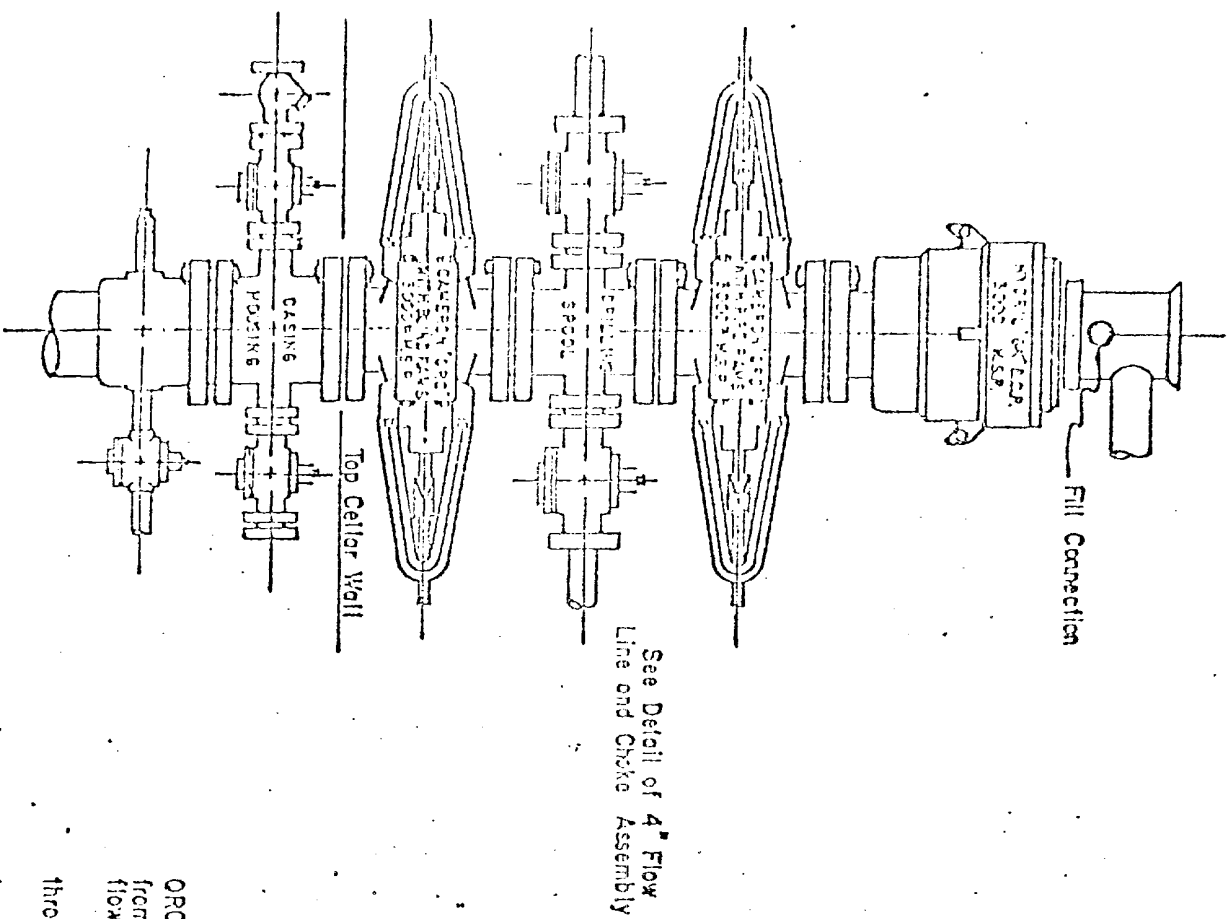
I hereby certify that the information above is true and complete to the best of my knowledge and belief.

Signed G. J. Bonland Title Area Production Manager Date September 13, 1976

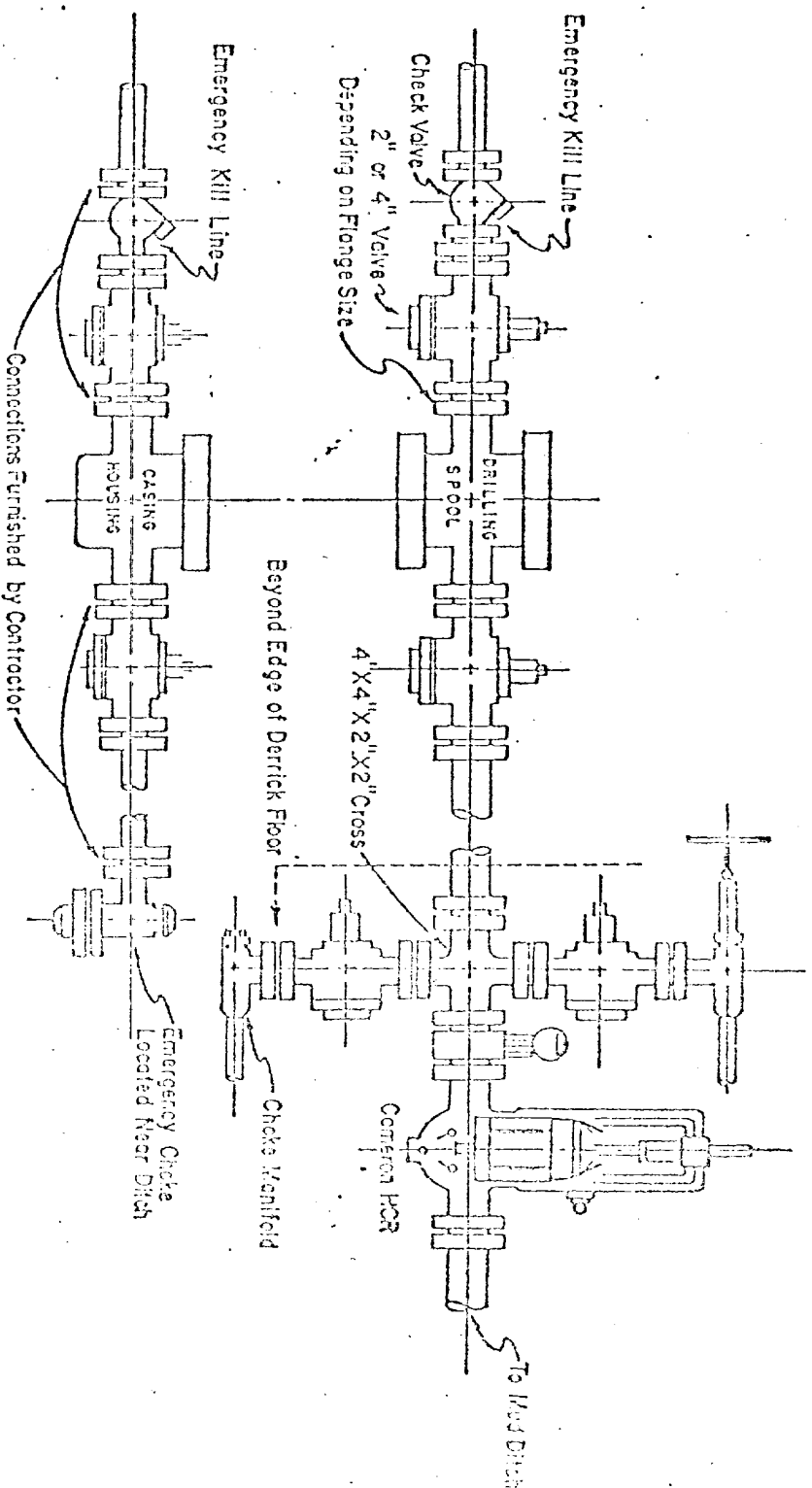
(This Space for State Use)

APPROVED BY Gerry Septon TITLE SUPERVISOR DISTRICT I
CONDITIONS OF APPROVAL, IF ANY:

DATE SEP 14 1976



See Detail of 4" Flow
Line and Choke Assembly



2" or 4" Valve
Depending on Flange Size

4"X4"X2"X2"Cross

Beyond Edge of Derrick Floor

Choke Manifold

Center for

To Her Diet

Emergency Clinic
Located Near District

-Connections Furnished by Contractor

3,000 PSI WORKING PRESSURE
KILL, CHOKE, AND FILL CONNECTIONS

DETAIL OF 4" FLOW LINE CHOKE ASSEMBLY

ORC, Cameron Type F single or Shafter Hydraulic single, and the upper will be Hydril GK. In lieu of the drilling speed, the flanged outlets from the Cameron Type F single open face flanged preventer, provided the outlets are the correct size, may be used for the four-inch flow line and the two-inch kill line.

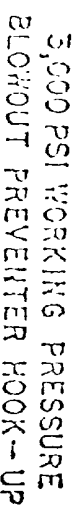
Size 12-inch preventers may be used for work down through 8-5/8-inch casing. Size 10-inch preventers may be used for work down through 7-3/4-inch casing. Size six-inch preventers are to be used for work through 7-inch and 5-1/2-inch casings.

Minimum operating equipment for the preventers will be: (1) An air operated pump-out (2) An accumulator(s) with some means of charging a fluid charge. A closed fluid system is recommended. The closing manifold and remote closing manifold will have a separate four-way

valve for each pressure operated device and a Hydril regulator will be provided. Sufficient fluid capacity in the accumulator(s) shall be available to close all the pressure operated devices at the same time with 25 percent reserve. Guff No. 551 hydraulic oil shall be used as the operating fluid.

The four-inch flow line from the preventers shall be supported by a metal stand or reinforced concrete. All valves throughout the assembly shall be selected for operation in both gas and fluids.

The ram type preventers and the Cameron HCR valve will be provided with stem extensions, universal joints, if needed, and operating wheels.



Swiss 300 Flanges, or Bellas

NEW MEXICO OIL CONSERVATION COMMISSION
WELL LOCATION AND ACREAGE DEDICATION F

Form O-102
Supersedes O-128
Effective 1-1-65

All distances must be from the outer boundaries of the Section.

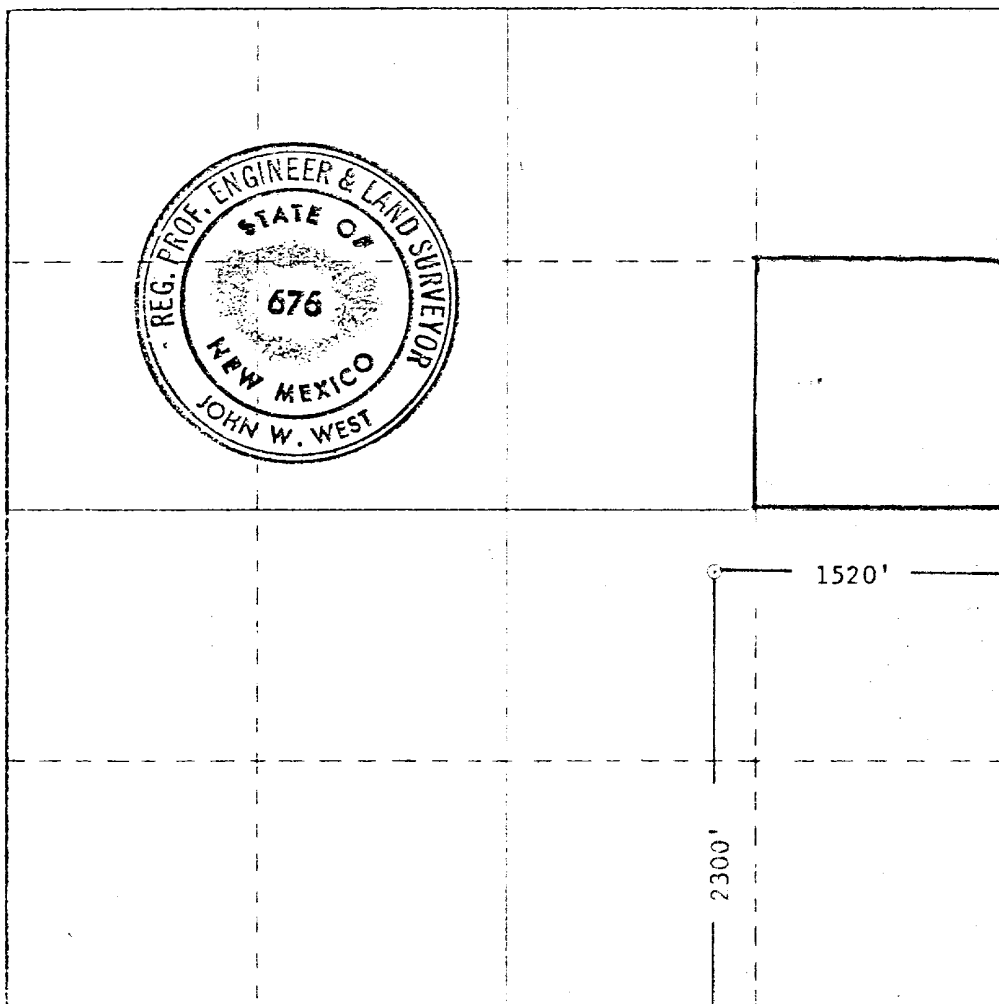
| | | | | |
|--------------------------------------|---------------------|---------------------------------------|-------------------------|----------------------------|
| LEASEE GULF OIL CORP. | | LEASE CENTRAL DRINKARD UNIT | | ACRES 420 |
| SECTION J | RANGE 33 | TOWNSHIP 21 SOUTH | RANGE 37 EAST | COUNTY LEA |
| 2. Section and Township of Well | | | | |
| Section 2300 | | Township SOUTH | | Range 1520 |
| Range 37 EAST | | County LEA | | State NEW MEXICO |
| Producing Formation 3443.4 | Producing Formation | | Dedicated Acreage | |

1. Outline the acreage dedicated to the subject well by colored pencil or hatchure marks on the plat below.
2. If more than one lease is dedicated to the well, outline each and identify the ownership thereof (both as to working interest and royalty).
3. If more than one lease of different ownership is dedicated to the well, have the interests of all owners been consolidated by communitization, unitization, force-pooling, etc?

☐ Yes ☐ No If answer is "yes," type of consolidation _____

If answer is "no," list the owners and tract descriptions which have actually been consolidated. (Use reverse side of this form if necessary.) _____

No allowable will be assigned to the well until all interests have been consolidated (by communitization, unitization, forced-pooling, or otherwise) or until a non-standard unit, eliminating such interests, has been approved by the Commission.



CERTIFICATION

I hereby certify that the information contained herein is true and complete to the best of my knowledge and belief.

C. D. Borland

Name

C. D. BORLAND

Position

Area Production Manager

Company

Gulf Oil Corporation

Date

September 13, 1976

I hereby certify that the well location shown on this plat was plotted from field notes of actual surveys made by me or under my supervision, and that the same is true and correct to the best of my knowledge and belief.

Date Surveyed

SEPT. 10, 1976

Registered Professional Engineer and/or Land Surveyor

John W. West

Signature No.

676

330 660 990 1320 1650 1980 2310 2640 2970 3300 3630 3960 4290 4620 4950 5280 5610 5940 6270 6600 6930 7260 7590 7920 8250 8580 8910 9240 9570 9900

RECEIVED

1966
JAN 10 1966
U.S. DEPARTMENT OF COMMERCE
BUREAU OF ECONOMIC ANALYSIS

1966
JAN 10 1966
U.S. DEPARTMENT OF COMMERCE
BUREAU OF ECONOMIC ANALYSIS