

UNIT STATES
DEPARTMENT OF THE INTERIOR
GEOLOGICAL SURVEY(Other instructions on
reverse side)

Budget Bureau No. 42-H1425.

APPLICATION FOR PERMIT TO DRILL, DEEPEN, OR PLUG BACK

1a. TYPE OF WORK

DRILL ☒DEEPEN ☐PLUG BACK ☐

b. TYPE OF WELL

OIL
WELL ☒GAS
WELL ☐OTHER ☐SINGLE
ZONE ☐MULTIPLE
ZONE ☐

2. NAME OF OPERATOR

CONTINENTAL OIL CO.

3. ADDRESS OF OPERATOR

Box 460, HOBBS, N.M. 88240

4. LOCATION OF WELL (Report location clearly and in accordance with any State requirements.)*

At surface

660' FSL & 1980' FWL OF SOC 21

At proposed prod. zone

SAME

14. DISTANCE IN MILES AND DIRECTION FROM NEAREST TOWN OR POST OFFICE*

10. DISTANCE FROM PROPOSED*

LOCATION TO NEAREST
PROPERTY OR LEASE LINE, FT.
(Also to nearest drilg. unit line, if any)

16. NO. OF ACRES IN LEASE

1920.92

18. DISTANCE FROM PROPOSED LOCATION*

TO NEAREST WELL, DRILLING, COMPLETED,
OR APPLIED FOR, ON THIS LEASE, FT.

19. PROPOSED DEPTH

7025'

17. NO. OF ACRES ASSIGNED
TO THIS WELL

40.

20. ROTARY OR CABLE TOOLS

ROTARY

21. ELEVATIONS (Show whether DF, RT, GR, etc.)

3549' GR

22. APPROX. DATE WORK WILL START*

9-20-76

23.

PROPOSED CASING AND CEMENTING PROGRAM

SIZE OF HOLE	SIZE OF CASING	WEIGHT PER FOOT	SETTING DEPTH	QUANTITY OF CEMENT
12 1/2"	9 5/8"	32.30 #	1500'	625 SX Circ.
8 3/4"	7"	23 # & 26 #	7025'	1080 SX

IT IS Proposed to Drill a Straight Hole to a
TD of 7025' and complete as a dual oil well in
The Blinobry & Tubb zones.

Mud Program: 0-1500' Fresh Water; 1500-7025',
Salt Gel, 9.0-10.0 #.

See Attached For B.O.P. Program.

See Attached Proposal well Plan For Formation TOPS,
Logging, ETC.

Unless Drilling Operations have
Commenced, this drilling approval

Expires 12-30-76

IN ABOVE SPACE DESCRIBE PROPOSED PROGRAM: If proposal is to deepen or plug back, give data on present productive zone and proposed new productive zone. If proposal is to drill or deepen directionally, give pertinent data on subsurface locations and measured and true vertical depths. Give blowout preventer program, if any.

24.

SIGNED

Wm. A. Butterfield

TITLE

ADMIN. SUPERV.

DATE

8-23-76

(This space for Federal or State office use)

PERMIT NO.

APPROVAL DATE

APPROVED BY

CONDITIONS OF APPROVAL, IF ANY:

TITLE

SEE ATTACHED FOR
CONDITIONS OF APPROVAL

*See Instructions On Reverse Side

APPROVED
AS AMENDED

SEP 30 1976

BERNARD MOROZ
ACTING DISTRICT ENGINEER

USGS (6), NMFC Partners (4), File.

RECEIVED

OCT 5 1976

OL CONSERVATION COMM.
HOBBS, N. M.

NEW MEXICO OIL CONSERVATION COMMISSION
WELL LOCATION AND ACREAGE DEDICATION PL

Form C-102
Supersedes C-128
Effective 1-1-65

All distances must be from the outer boundaries of the Section

Operator CONTINENTAL OIL COMPANY		Lease Warren Unit		Well No. 43
Unit Letter N	Section 21	Township 20 South	Range 38 East	County Lea

Actual Footage Location of Well:

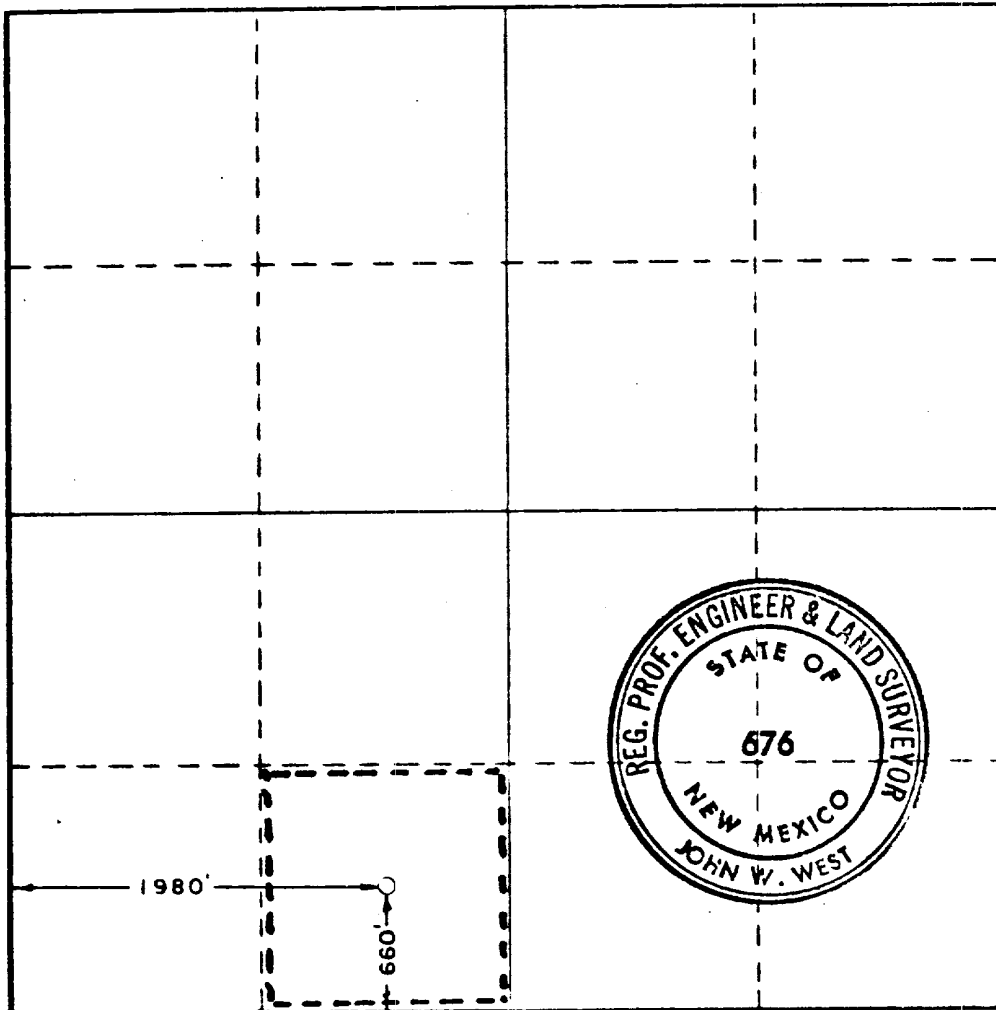
660	feet from the south	line and	1980	feet from the west	line
Ground Level Elev. 3549.4	Producing Formation BLINEBRY & TUBB		Pool UNDESIGNATED	Dedicated Acreage: 40	

1. Outline the acreage dedicated to the subject well by colored pencil or hachure marks on the plat below.
2. If more than one lease is dedicated to the well, outline each and identify the ownership thereof (both as to working interest and royalty).
3. If more than one lease of different ownership is dedicated to the well, have the interests of all owners been consolidated by communitization, unitization, force-pooling, etc?

☐ Yes ☐ No If answer is "yes," type of consolidation _____

If answer is "no," list the owners and tract descriptions which have actually been consolidated. (Use reverse side of this form if necessary.) _____

No allowable will be assigned to the well until all interests have been consolidated (by communitization, unitization, forced-pooling, or otherwise) or until a non-standard unit, eliminating such interests, has been approved by the Commission.



CERTIFICATION

I hereby certify that the information contained herein is true and complete to the best of my knowledge and belief.

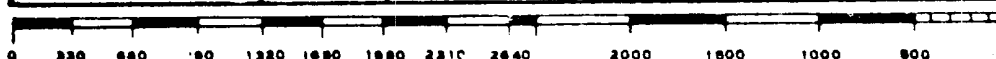
Name **W. A. Butterfield**
Position **Admin. Supv.**
Company **CONTINENTAL OIL CO.**
Date **8-28-76**

I hereby certify that the well location shown on this plat was plotted from field notes of actual surveys made by me or under my supervision, and that the same is true and correct to the best of my knowledge and belief.

Date Surveyed
July 19, 1976

Registered Professional Engineer and/or Land Surveyor

John W. West
Certificate No. **676**



RECEIVED

OCT 5 1976

OIL CONSERVATION COMM.
HOBBS, N. M.

WELL NAME: Warren Unit #4s

COUNTY: Lea County, New Mexico

LOCATION: 660' ES & 1980' FWL, Sec.
21-20S-33E

STATE: Est. grd. 3560
Est. DF 3571

DEPTH	FORMATION TOPS & TYPE	DRILLING PROBLEMS	TYPE OF FORMATION EVALUATION	HOLE SIZE	CASING		FRACTURE GRADIENT	FORMATION PRESSURE GRADIENT	MUD	
					SIZE	DEPTH			WEIGHT	TYPE
		none anticipated								
	Rustler 1450			12-1/4	9-5/8	1500			8.5 9.0	Fresh Water
	Yates 2730		GR-CNL-FDC DLL TD 2600							
	San Andres 4250									
	Glorieta 5430									
	Elinebry 5900		BHC Sonic-MLL Coriband TD 5400				14.9	Less than 8.5		
	Tubb 6410 Drinkard 6670									
	TD 7025 (Includes 45' shoe jt.)			8-3/4	7	7025	15.1	Less than 8.5	9.0 10.0	Salt Gel

Date _____

Prepared by: _____

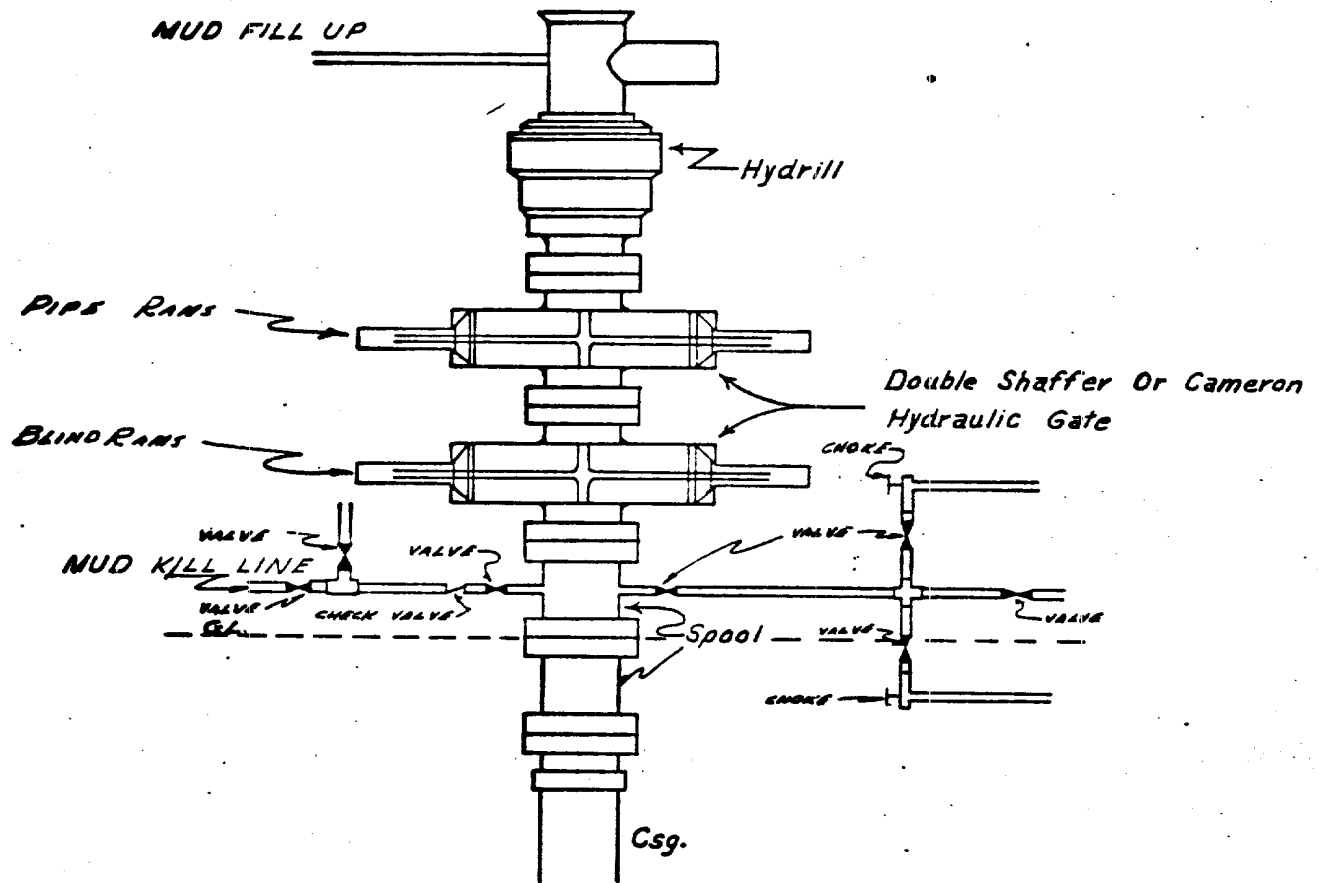
RECEIVED

1971

CLARK

CONTINENTAL OIL COMPANY
Blow-out Preventer Specifications

WARREN UNIT NO. 43



API Series 900

NOTE:

Manual and Hydraulic controls with closing unit no less than 75' from well head.
Remote controls on rig floor.

**DUE TO SUBSTRUCTURE CLEARANCE,
HYDRILL MAY OR MAY NOT BE USED.**

RECEIVED

OCT 5 1976

OL CONSERVATION COMM.
HOBBS, N. M.

SURFACE USE PLAN

Continental Oil Company, Warren Unit No. 43
660' FSL and 1980' FWL of Sec. 21, T-20S, R-38E
Lease LC031695 (b), Lea County, N.M.

This plan is to accompany "Application for Permit to Drill" the subject well which is located approximately 10 miles on a direct line south of Hobbs, New Mexico. The following is a discussion of pertinent information concerning possible effect which the proposed drilling of the well may have on the environment of the well and road sites and surrounding acreage. A copy will be posted on the derrick floor so that all contractors and sub-contractors will be aware of all items of this plan.

1. Existing Roads - Exhibit "A" is a portion of a New Mexico road map showing existing black top roads. Directions to the location (outlined in red on map) from Hobbs, New Mexico are as follows: from the Standolind Road on the south edge of Hobbs travel south 9.6 miles on Highway 18; turn west at the Continental Bicentennial cattleguard on existing caliche road and travel 1.3 miles west and .5 miles north.
2. Planned Roads - ^{12'} ~~24'~~ x 2640' - See Exhibits "B" and "C". *Center of the Proposed Road is 5x6' to d*
3. Locations of Existing Wells - See Exhibit "C".
4. Tank Battery and Flowlines - The existing battery and lines are shown on exhibit "C".
5. Water Supply - Supply water will be hauled from Eunice, New Mexico.
6. Source of Construction Materials - Existing caliche pit located SE-SE section 15, T-20S, R-38E, and caliche to be hauled 1 3/4 miles south; west 1.3 miles; north .5 miles to new road location.
7. Waste Disposal - Well cuttings will be disposed in reserve pit. Barrel trash containers to be in accessible locations within drill site area during drilling and completion procedures. All detrimental waste will be hauled away, burned or buried with a minimum cover of 24" of dirt. See Exhibit "D" for location of pits. If well is productive, maintenance waste will be placed in special trash cans and hauled away periodically. Any produced water will be collected in tanks until hauled to an approved disposal system, or separate disposal applications will be submitted to the survey for appropriate approval.
8. Ancillary Facilities - None.
9. Proposed Well Mat and Immediate Area - Refer to Exhibit "D" for direction orientation.
 - a. Size of Drilling Pad - 180' x 235' *(5x6' to d)*

RECEIVED

SEP 5 1970
U.S. CONSTITUTION COMMISSION
WASHINGTON, D.C.

- b. Surfaced - Will be topped with 6" of caliche, bladed, watered and compacted. Caliche to be purchased from ~~████~~ by dirt contractor, *Er! Kernogay*
 - c. Reserve Pit - 100' x 100' ^{5x6 hole} lined with plastic and joining mat on north side.
 - d. Cut and Fill - None.
 - e. Drill Site Layout - Exhibit "D" shows position of mat, reserve pits, burn pits, trash pits, and mud pits in relation to the well bore. Rig will be erected with the V-Door to the east.
10. Restoration of Surface - Pits will be backfilled and leveled as soon as practical to original condition. Commencement of rehabilitation operations will immediately follow removal of drilling and completion equipment from location and rehabilitation of the surface is planned to be completed within 45 days from commencement.
11. Other Information -
- a. Terrain - Low rolling sand hills. See Exhibit "B", topographic map of area.
 - b. Soil - Sandy
 - c. Vegetation - Oak sparse; shinnery
 - d. Surface Use - Grazing
 - e. Ponds and Steams - None within one mile.
 - f. Water Wells - None within one mile.
 - g. Residences and Buildings - None within one mile.
 - h. Arroyos, Canyons, Etc. - There are no significant surface features, see attached Exhibit "B".
 - i. Well Sign - Sign identifying and locating well will be maintained at drill site with the spudding of the well.
 - j. Open Pits - All pits containing mud or other liquids will be fenced.
 - k. Archaeological Resources - None observed.
12. Operator's Representative - Field personnel who can be contacted concerning compliance of this Surface Use Plan are as follows:

Production & Drilling
W. D. Cates or D. A. Sowers
1001 North Turner
Hobbs, New Mexico 88240
Phone: 393 - 4141

RECEIVED

SEP 5 1976

OIL CONSERVATION COMM.
HON. W. M.

13. Certification - I hereby certify that I, or persons under my direct supervision, have inspected the proposed drill site and access route; that I am familiar with the conditions which presently exist; that the statements made in this plan are, to the best of my knowledge, true and correct; and that the work associated with the operations proposed herein will be performed by Continental Oil Company and its contractors and sub-contractors in conformity with this plan and the terms and conditions under which it is approved.

8-23-76
Date

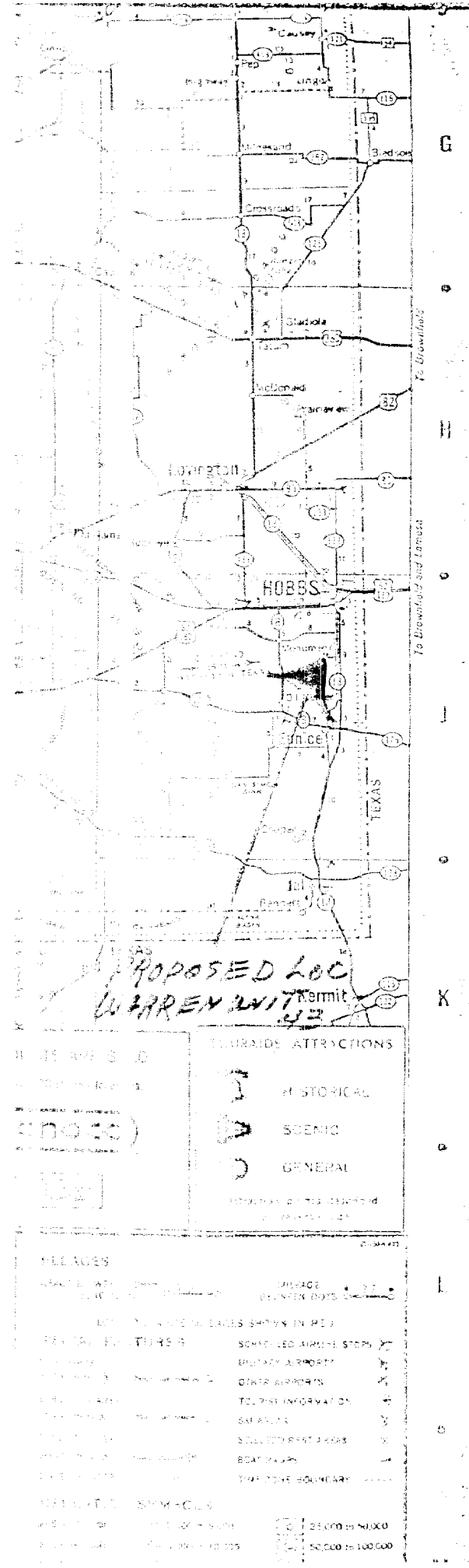
D. A. Sowers
D. A. Sowers
Production Superintendent

RECEIVED

OCT 5 1976

OIL CONSERVATION COMM.
HOBBS, N. M.

CONTINENTAL OIL CO
WARREN UNIT #42
EXHIBIT A



RECEIVED

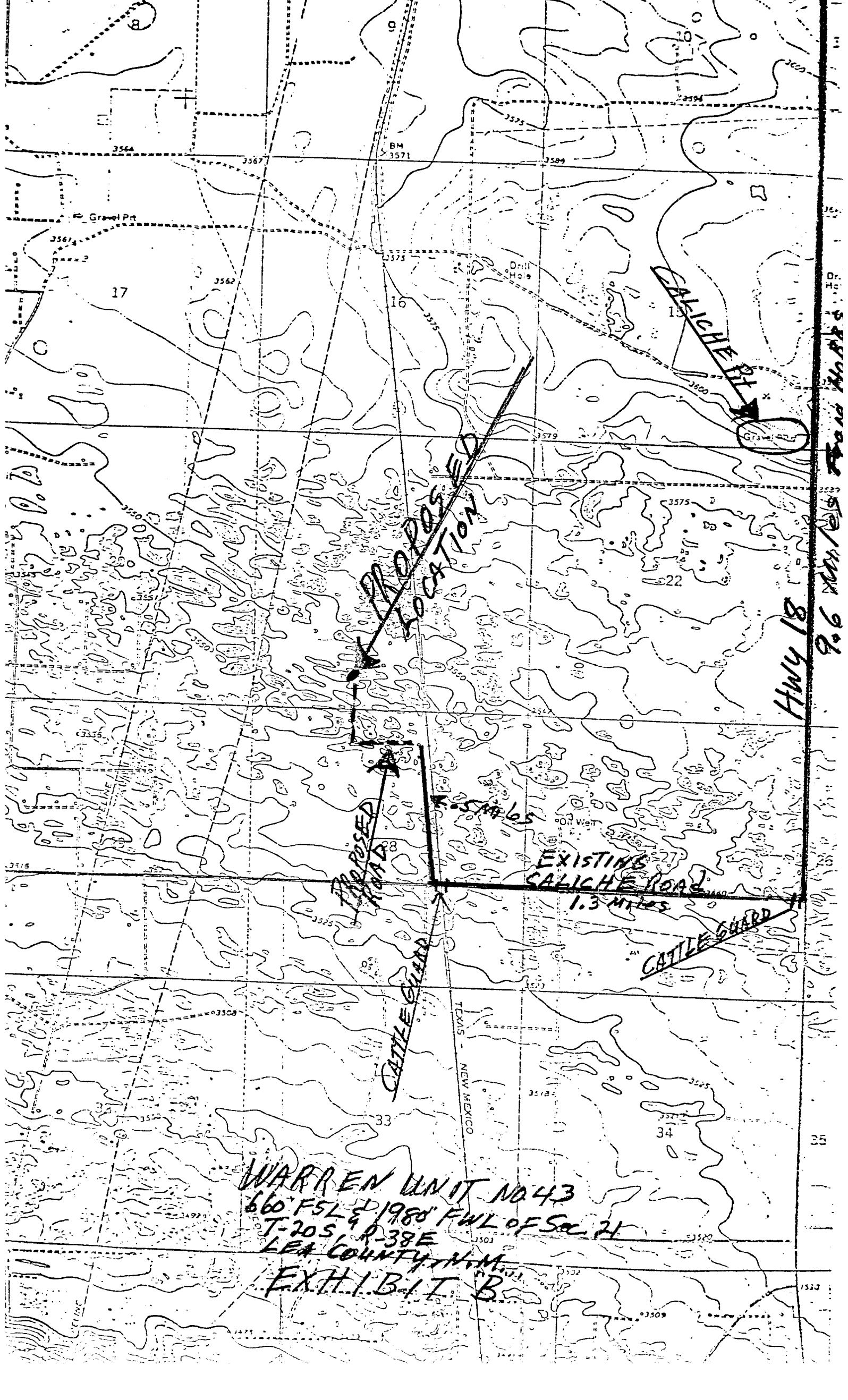
OCT 5 1978

OIL CONSERVATION COMM.
HOBBS, N. M.

RECEIVED

OCT 5 1978

OIL CONSERVATION COMM.



WARREN UNIT NO. 43
660' FSL & 1980' FWL OF SEC. 21
T-20S, R-38E
LEA COUNTY, N.M.
EXHIBIT B

HWY 18

9.6 miles

Dr. H. C. ...

RECEIVED

OCT 5 1976

OIL CONSERVATION COMM.
RECEIVED

R 38 E

WARREN UNIT AREA
LEA COUNTY, NEW MEXICO
Scale 1"=2000'

24

23

22

Cont. et al

PROPOSED LOC

Cont. et al

W.D. Burger
U.S.

W.D. Burger
U.S.

27

Cont. et al

Cont. et al

W.D. Burger

36

Cont. et al

33

5 miles

Cont. et al

23

Cont. et al

W.D. Burger

3701(B)

26

25

T
20
S

Cont. et al

O.L. Fisher

063458

Cont. et al

D.M. Warren

0316951(B)

Cont. et al

D.M. Warren

0316951(B)

24

Cont. et al

D.M. Warren

931(A)

11

34

29

21

CATTLE GUARD

Existing 30 Road

1.5 miles

35

28

PROPOSED

TANK BLY

ROAD

32

31

30

29

28

27

26

25

24

23

22

21

20

19

18

17

16

15

14

13

12

11

10

9

8

7

6

5

4

3

2

1

0

-1

-2

-3

-4

-5

-6

-7

-8

-9

-10

-11

-12

-13

-14

-15

-16

-17

-18

-19

-20

-21

-22

-23

-24

-25

-26

-27

-28

-29

-30

-31

-32

-33

-34

-35

-36

-37

-38

-39

-40

-41

-42

-43

-44

-45

-46

-47

-48

-49

-50

-51

-52

-53

-54

-55

-56

-57

-58

-59

-60

-61

-62

-63

-64

-65

-66

-67

-68

-69

-70

-71

-72

-73

-74

-75

-76

-77

-78

-79

-80

-81

-82

-83

-84

-85

-86

-87

-88

-89

-90

-91

-92

-93

-94

-95

-96

-97

-98

-99

-100

-101

-102

-103

-104

-105

-106

-107

-108

-109

-110

-111

-112

-113

-114

-115

-116

-117

-118

-119

-120

-121

-122

-123

-124

-125

-126

-127

-128

-129

-130

-131

-132

-133

-134

-135

-136

-137

-138

-139

-140

-141

-142

-143

-144

-145

-146

-147

-148

-149

-150

-151

-152

-153

-154

-155

-156

-157

-158

-159

-160

-161

-162

-163

-164

-165

-166

-167

-168

-169

-170

-171

-172

-173

-174

-175

-176

-177

-178

-179

-180

-181

-182

-183

-184

-185

-186

-187

-188

-189

-190

-191

-192

-193

-194

-195

-196

-197

-198

-199

-200

-201

-202

-203

-204

-205

-206

-207

-208

-209

-210

-211

-212

-213

-214

-215

-216

-217

-218

-219

-220

-221

-222

-223

-224

-225

-226

-227

-228

-229

-230

-231

-232

-233

-234

-235

-236

-237

-238

-239

-240

-241

-242

-243

-244

-245

-246

-247

-248

-249

-250

-251

-252

-253

-254

-255

-256

-257

-258

-259

-260

-261

-262

-

RECEIVED

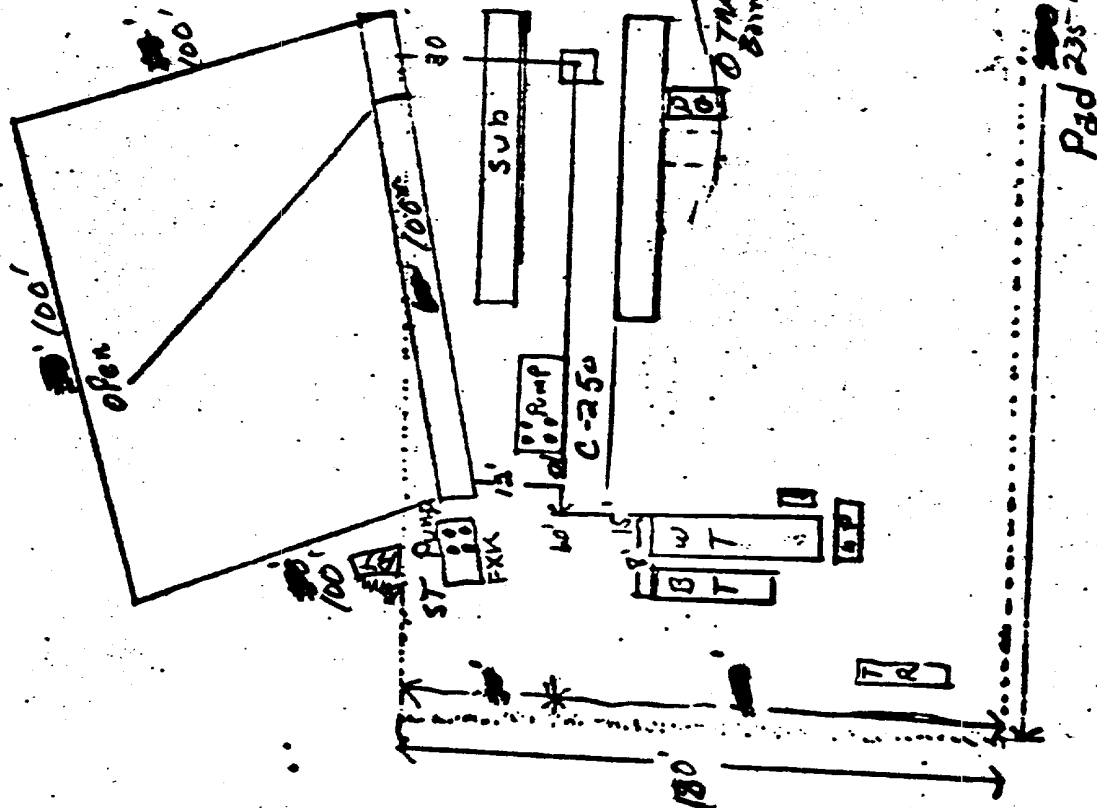
LOT 21378
U.S. GOVERNMENT SCHOOL
RECEIVED

Hondo Rig #1

U-15

2-Walkes 48 NKR

Lee C. Moor 129'



CONTINENTAL OIL CO.

WARREN UNIT NO. 43

EXHIBIT "D"

RECEIVED

OCT 5 1976

OIL CONSERVATION COMM.
HOBBS, N. M.

September 25, 1975

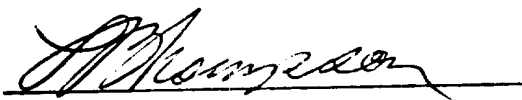
District Engineer
U. S. Geological Survey

Gentlemen:

RE: WARREN UNIT NO. 43

This refers to the Form 9-331C, Application to Drill, Deepen or Plugback accompanying this letter. The undersigned hereby states that he has personally contacted EARL KORNEGAY, the owner of the surface land where the proposed work is to be conducted and advised him of the proposed work, the construction site and pertinent roads included in the project. It is further stated that, upon being fully advised of the extent of the work and the effect upon the surface, said owner has consented to the said work and that agreement as to the compensation for damages to the surface estate has been reached.

It has been agreed, subject to change at that time, that upon abandonment of operations the roads shall be (~~ripped or left intact~~) and the pad shall be (~~ripped or left intact~~).



STATE OF NEW MEXICO
COUNTY OF LEA

Subscribed and sworn to before me this 24th day of August, 1976


Notary Public

My commission expires 2-20-77

RECEIVED

OCT 6 1976

OIL CONSERVATION COMM.
HOBBS, N. M.

U. S. GEOLOGICAL SURVEY
P. O. Box 1157
Hobbs, New Mexico 88240

HOBBS DISTRICT

Continental Oil Co.
No. 43 Warren Unit
SE $\frac{1}{4}$ SW $\frac{1}{4}$ sec. 21-20S-38E
Lea County, N. M.

Above Data Required on Well Sign

CONDITIONS OF APPROVAL

1. Drilling operations authorized are subject to the attached sheet for general requirements for drilling and producing operations.
2. Notify this office (telephone (505) 393-3612) when the well is spudded and in sufficient time for a representative to witness cementing operations.
3. Immediate notice is required of all blowouts, fires, spills, and accidents involving life-threatening injuries or loss of life.
4. Secure prior approval before changing the approved drilling program or commencing plugging operations, plug-back work, casing repair work, or corrective cementing operations.
5. Blowout prevention equipment is to be installed, tested, and in working order before drilling below the surface casing and shall be maintained ready for use until drilling operations are completed.
6. A kill-line is to be properly installed and is not to be used as a fill-up line.
7. Blowout preventers are to have proper casing rams when running casing.
8. Drill string safety valve(s) to fit all pipe in the drill string to be maintained on the rig floor while drilling operations are in progress.
9. Blowout prevention drills are to be conducted as necessary to assure that equipment is operational and that each crew is properly trained to carry out emergency duties. All BOP tests and drills are to be recorded on the driller's log.
10. Minimum required fill of cement behind the 7" casing is to the base of the salt section.
11. Operations must be in compliance with the provisions of the landowner agreement concerning surface disturbance and surface restoration.

RECEIVED

CCT 5 1976

OIL CONSERVATION COMM.
HOBBS, N. M.

107

107