

District I
1625 N. French Dr., Hobbs, NM 88240

State of New Mexico
Energy, Minerals & Natural Resources Department

Revised February 21, 199

District II
PO Drawer DD, Artesia, NM 88211-0719

OIL CONSERVATION DIVISION

instructions on bac

District III
1000 Rio Brazos Rd. Aztec, NM 87410

PO Box 2088

Submit to Appropriate District Office

Santa Fe, NM 87504-2088

State Lease - 4 Copies

District IV
PO Box 2088, Santa Fe, NM 87504-2088

Fee Lease - 3 Copies

☐ AMENDED REPORT

WELL LOCATION AND ACREAGE DEDICATION PLAT

API Number 30-025- <u>25542</u>		2 Pool Code 79240		3 Pool Name Jalmat Tansill Yates 7 Rvrs (Pro Gas)	
4 Property Code 24671		5 Property Name State A A/C 2			6 Well Number <u>62</u>
7 OGRID No. 162791		8 Operator Name Raptor Resources			9 Elevation

10 Surface Location

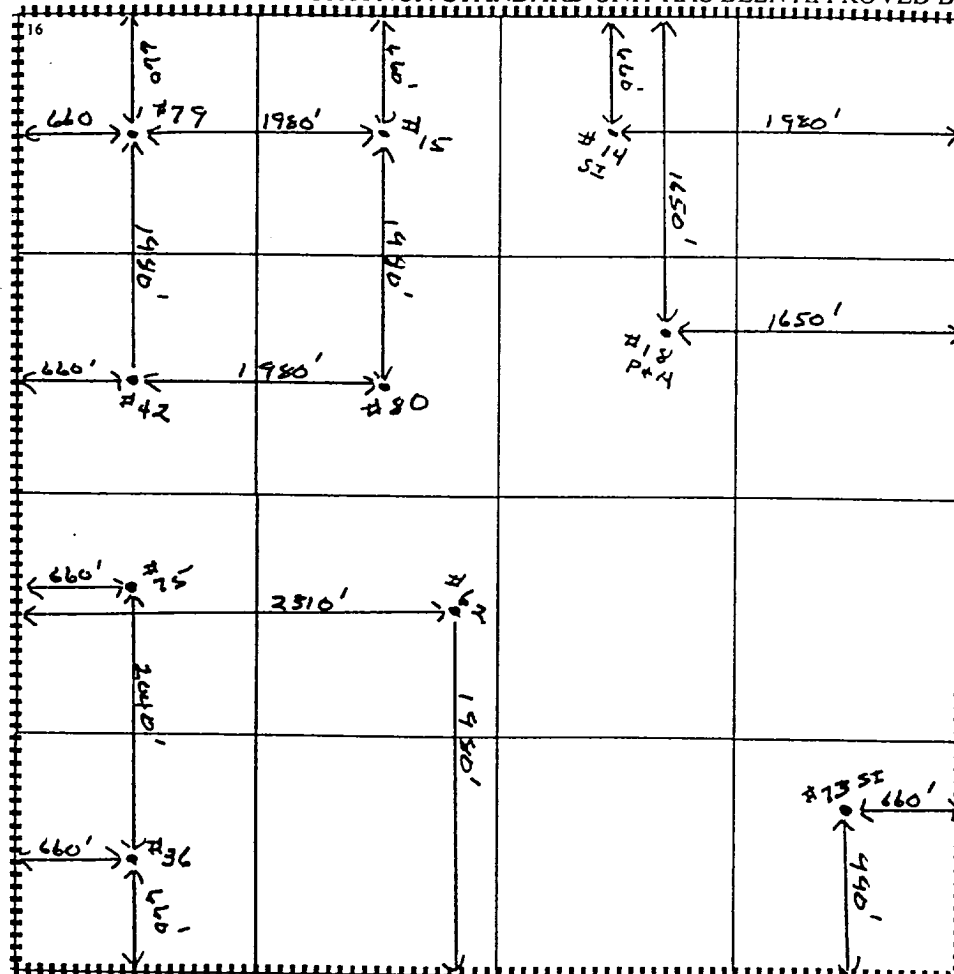
UL or lot no.	Section	Township	Range	Lot Idn	Feet from the	North/South line	Feet from the	East/West line	County
<u>K</u>	<u>11</u>	<u>22S</u>	<u>36E</u>		<u>1980</u>	<u>South</u>	<u>2310</u>	<u>West</u>	<u>Lea</u>

11 Bottom Hole Location If Different From Surface

UL or lot no.	Section	Township	Range	Lot Idn	Feet from the	North/South line	Feet from the	East/West line	County

12 Dedicated Acres 640	13 Joint or Infill	14 Consolidation Code	15 Order No. <u>R 6483B/R 6575</u> <i>applied</i> Applied For <u>7-24-01</u>
---------------------------	--------------------	-----------------------	--

NO ALLOWABLE WILL BE ASSIGNED TO THIS COMPLETION UNTIL ALL INTERESTS HAVE BEEN CONSOLIDATED
OR A NON-STANDARD UNIT HAS BEEN APPROVED BY THE DIVISION



17 OPERATOR CERTIFICATION

I hereby certify that the information contained herein is true and complete to the best of my knowledge and belief.

Bill R. Keathly
Signature

Printed Name
Bill R. Keathly

Regulatory Agent

Title
2-20-02

Date

18 SURVEYOR CERTIFICATION

I hereby certify that the well location shown on this plat was plotted from field notes of actual surveys made by me or under my supervision, and that the same is true and correct to the best of my belief.

Date of Survey

Signature and Seal of Professional Surveyor:

Certificate Number

District I
PO Box 1980, Hobbs, NM 88241-1980
District II
PO Drawer DD, Artesia, NM 88211-0719
District III
1000 Rio Brazos Rd. Aztec, NM 87410
District IV
PO Box 2088, Santa Fe, NM 87504-2088

State of New Mexico
Energy, Minerals & Natural Resources Department

OIL CONSERVATION DIVISION
PO Box 2088
Santa Fe, NM 87504-2088

Form C

Revised February 21,
Instructions on

Submit to Appropriate District Office
State Lease - 4 C
Fee Lease - 3 C

☐ AMENDED REPORT

WELL LOCATION AND ACREAGE DEDICATION PLAT

API Number 30-025-25542		2 Pool Code 79240		3 Pool Name Jalmat, Tnsi, Yts, 7-Rivers (Pro Gas)			
4 Property Code 24671		5 Property Name State 'A' A/C 2				6 Well Number 62	
7 OGRID No. 162791		8 Operator Name Raptor Resources, Inc.				9 Elevation	

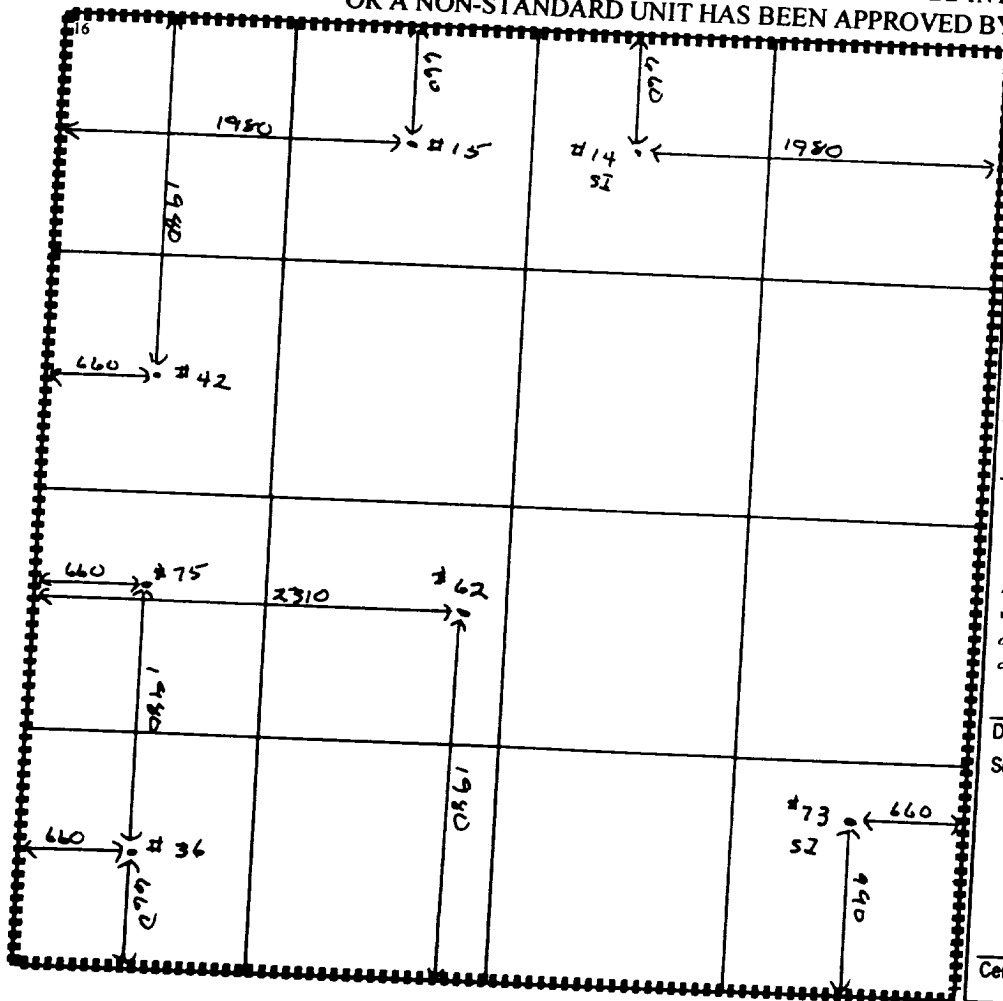
10 Surface Location									
UL or lot no.	Section	Township	Range	Lot Idn	Feet from the	North/South line	Feet from the	East/West line	County
K	11	22S	36E		1980	South	2310	West	Lea

11 Bottom Hole Location If Different From Surface									
UL or lot no.	Section	Township	Range	Lot Idn	Feet from the	North/South line	Feet from the	East/West line	County

12 Dedicated Acres 640	13 Joint or Infill	14 Consolidation Code	15 Order No.
---------------------------	--------------------	-----------------------	--------------

NO ALLOWABLE WILL BE ASSIGNED TO THIS COMPLETION UNTIL ALL INTERESTS HAVE BEEN CONSOLIDATED
OR A NON-STANDARD UNIT HAS BEEN APPROVED BY THE DIVISION

NSL-3089-A (SD)



17 OPERATOR CERTIFICATION

I hereby certify that the information contained herein is true and complete to the best of my knowledge and belief

Bill R. Keathly
Signature

Bill R. Keathly
Printed Name

Regulatory Agent - Raptor
Title

12-16-99
Date

18 SURVEYOR CERTIFICATION

I hereby certify that the well location shown on this plat was plotted from field notes of actual surveys made by me or under my supervision, and that the same is true and correct to the best of my belief.

Date of Survey

Signature and Seal of Professional Surveyor:

Certificate Number

Submit to: Appropriate
District Office
State L. - 4 copies
Fee Lease - 3 copies

State of New Mexico
Energy, Minerals and Natural Resources Department

Form C-1-2
Revised 1-1-89

OIL CONSERVATION DIVISION

P.O. Box 2088
Santa Fe, New Mexico 87504-2088

DISTRICT I
P.O. Box 1980, Hobbs, NM 88240

DISTRICT II
P.O. Drawer DD, Artesia, NM 88210

DISTRICT III
1000 Rio Brazos Rd., Aztec, NM 87410

WELL LOCATION AND ACREAGE DEDICATION PLAT

All Distances must be from the outer boundaries of the section

Operator Clayton W. Williams, Jr., Inc.		Lease State A AC 2		Well No. 62
Unit Letter K	Section 11	Township 22S	Range 36E	County NMPM
Actual Footage Location of Well:				
1980 feet from the Ground level Elev. 3519	South line and Producing Formation Yates	2310 feet from the Pool Jalmat Tansil Yates 7 Rivers	West line Dedicated Acreage: 640 Acres	

1. Outline the acreage dedicated to the subject well by colored pencil or hatchure marks on the plat below.

2. If more than one lease is dedicated to the well, outline each and identify the ownership thereof (both as to working interest and royalty).

3. If more than one lease of different ownership is dedicated to the well, have the interest of all owners been consolidated by communitization, unitization, force-pooling, etc.?

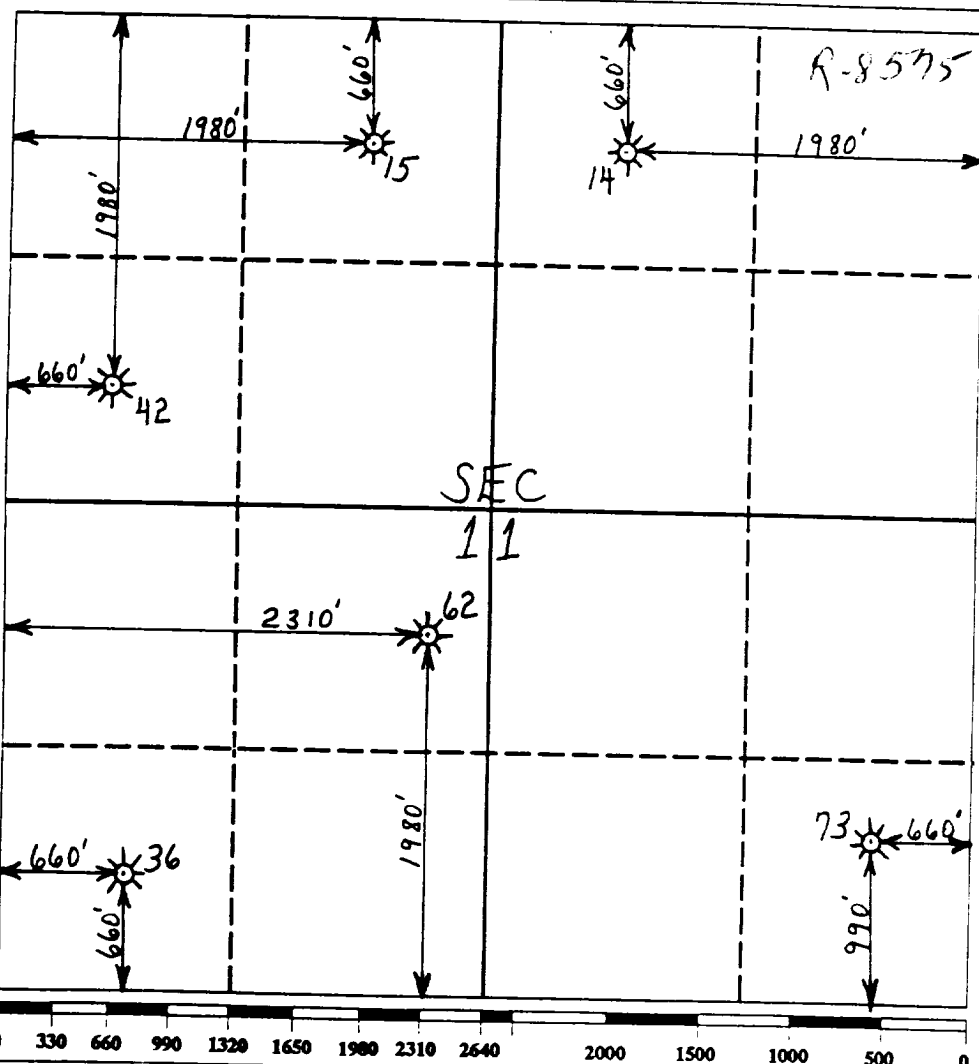
☐ Yes

☐ No

If answer is "yes" type of consolidation

If answer is "no" list the owners and tract descriptions which have actually been consolidated. (Use reverse side of this form if necessary).

No allowable will be assigned to the well until all interests have been consolidated (by communitization, unitization, forced-pooling, or otherwise) or until a non-standard unit, eliminating such interest, has been approved by the Division.



OPERATOR CERTIFICATION

I hereby certify that the information contained herein is true and complete to the best of my knowledge and belief.

Signature

Printed Name

David G. Grafe

Position

Petroleum Engineer

Company

Clayton W. Williams, Jr., Inc.

Date

02/17/93

SURVEYOR CERTIFICATION

I hereby certify that the well location shown on this plat was plotted from field notes of actual surveys made by me or under my supervision, and that the same is true and correct to the best of my knowledge and belief.

Date Surveyed

Signature & Seal of
Professional Surveyor

Certificate No.

MEXICO OIL CONSERVATION COMMISSION
WELL LOCATION AND ACREAGE DEDICATION PLAT

Form C-102
 Supersedes C-128
 Effective 1-1-65

All distances must be from the outer boundaries of the Section

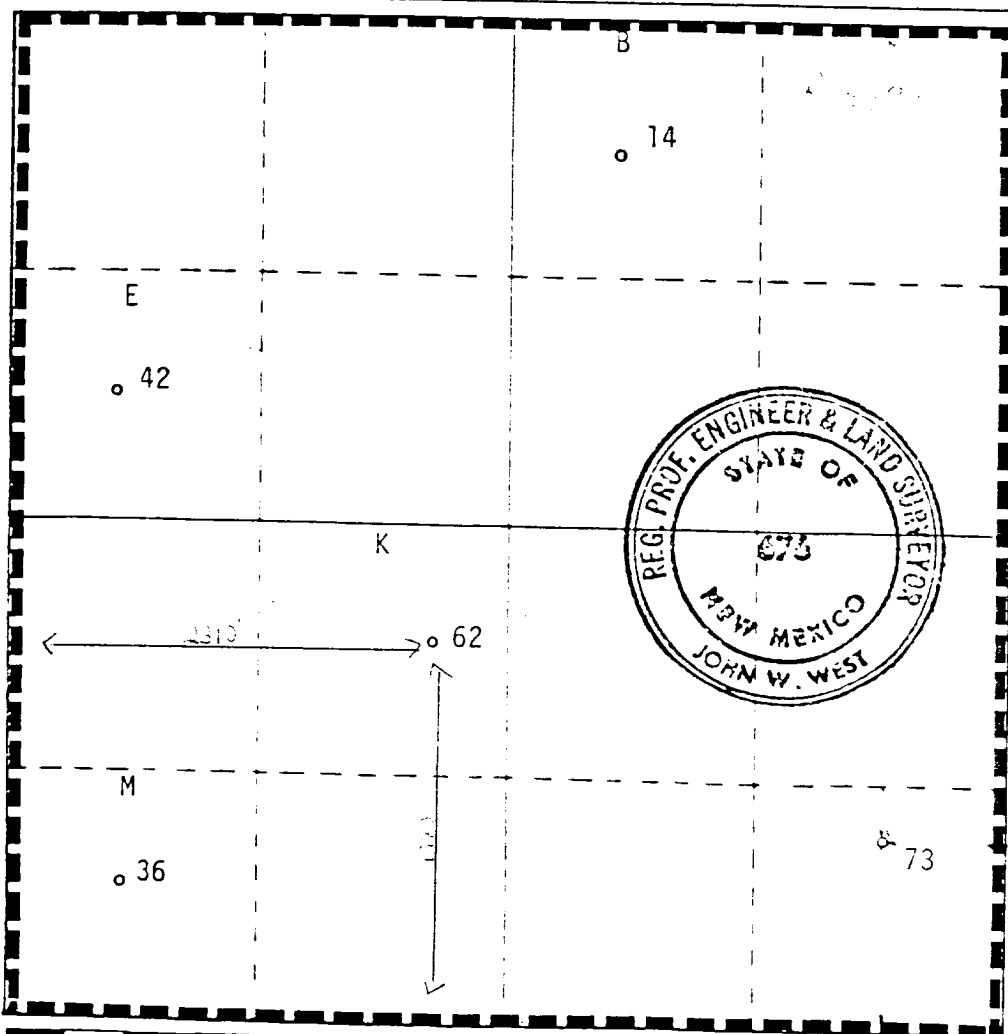
Operator Sun Exploration & Production Co.			Lease State "A" A/C-2		Well No. 62
Unit Letter K	Section 11	Township 22-S	Range 36-E	County Lea	
Actual Footage Location of Well: 1980 feet from the South line and 2310 feet from the West line					
Ground Level Elev. 3519.0	Producing Formation Yates-Seven Rivers		Pool Jalmat Gas		Dedicated Acreage: 640 Acres

1. Outline the acreage dedicated to the subject well by colored pencil or hachure marks on the plat below.
2. If more than one lease is dedicated to the well, outline each and identify the ownership thereof (both as to working interest and royalty).
3. If more than one lease of different ownership is dedicated to the well, have the interests of all owners been consolidated by communitization, unitization, force-pooling, etc?

☐ Yes ☐ No If answer is "yes," type of consolidation _____

If answer is "no," list the owners and tract descriptions which have actually been consolidated. (Use reverse side of this form if necessary.) _____

No allowable will be assigned to the well until all interests have been consolidated (by communitization, unitization, forced-pooling, or otherwise) or until a non-standard unit, eliminating such interests, has been approved by the Commission.



CERTIFICATION

I hereby certify that the information contained herein is true and complete to the best of my knowledge and belief.

Name Maria L. Perez
 Position Accounting Associate
 Company Sun Exploration & Production Co
 Date 5-23-88

I hereby certify that the well location shown on this plat was plotted from field notes of actual surveys made by me or under my supervision, and that the same is true and correct to the best of my knowledge and belief.

Date Surveyed August 11, 1987

Registered Professional Engineer and/or Land Surveyor

John W. West
 Certificate No. JOHN W. WEST, 676
D J EIDSON, 3239

RECEIVED

MAY 24 1988

OCD
HOBBS OFFICE

NEW MEXICO OIL CONSERVATION COMMISSION
WELL LOCATION AND ACREAGE DEDICATION PLAT

Form C-102
Supersedes C-128
Effective 1-1-65

All distances must be from the outer boundaries of the Section.

Operator Sun Texas Company			Lease State "A" A/c-2		Well No. 62
Unit Letter K	Section 11	Township 22-S	Range 36-E	County Lea	
Actual Postage Location of Well: 1980 feet from the south line and 2310 feet from the west line					
Ground Level Elev. 3541'	Producing Formation Yates		Foot Jalmat		Dedicated Acreage: 640 Acres

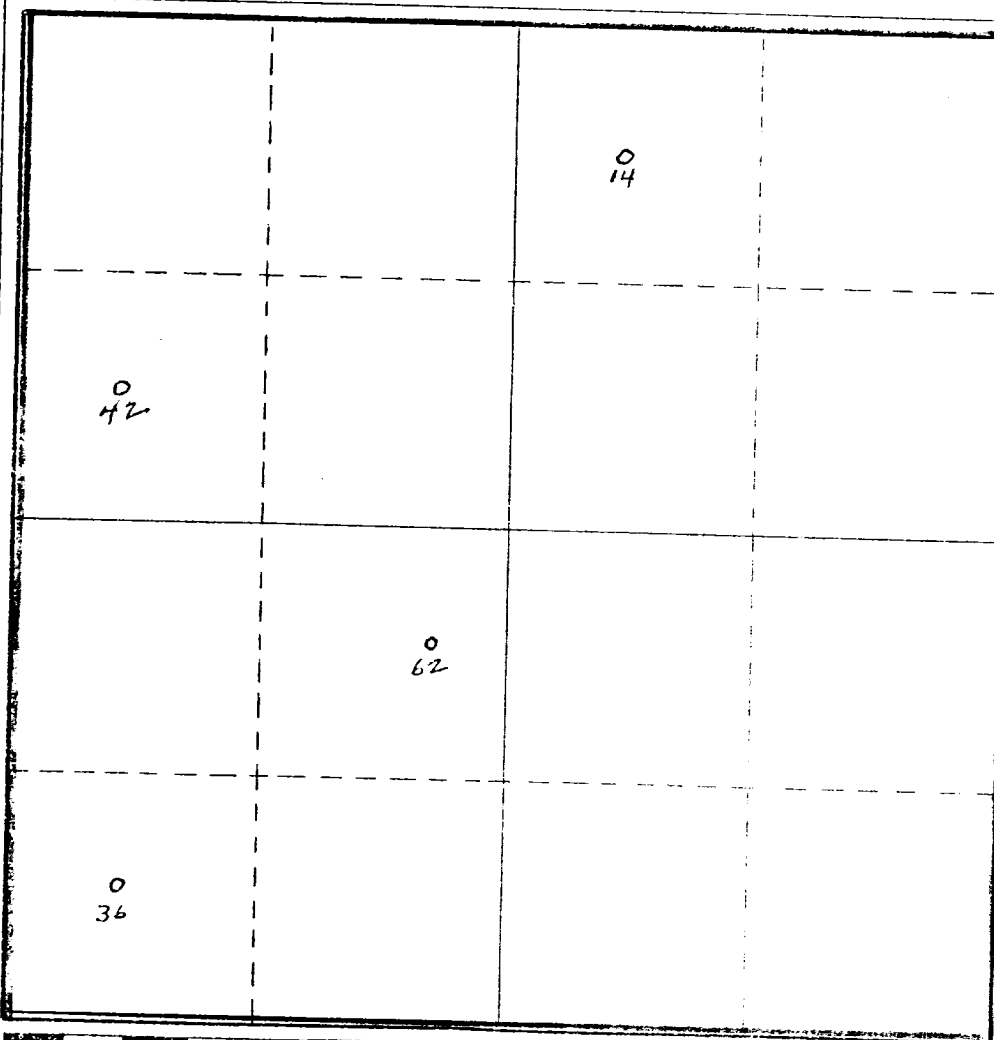
1. Outline the acreage dedicated to the subject well by colored pencil or hatchure marks on the plat below.
2. If more than one lease is dedicated to the well, outline each and identify the ownership thereof (both as to working interest and royalty).
3. If more than one lease of different ownership is dedicated to the well, have the interests of all owners been consolidated by communitization, unitization, force-pooling, etc?

☐ Yes ☐ No If answer is "yes," type of consolidation _____

If answer is "no," list the owners and tract descriptions which have actually been consolidated. (Use reverse side of this form if necessary.) _____

No allowable will be assigned to the well until all interests have been consolidated (by communitization, unitization, forced-pooling, or otherwise) or until a non-standard unit, eliminating such interests, has been approved by the Commission.

R-6483



CERTIFICATION

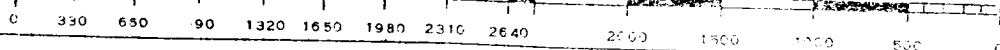
I hereby certify that the information contained herein is true and complete to the best of my knowledge and belief.

Name L. F. Fisher
Position Senior Clerk
Company Sun Texas Company
Date November 6, 1980

I hereby certify that the well location shown on this plat was plotted from field notes of actual surveys made by me or under my supervision, and that the same is true and correct to the best of my knowledge and belief.

Date Surveyed _____
Registered Professional Engineer and/or Land Surveyor _____

Certificate No. _____





COUNTY **LEA** FIELD **Jalmat** STATE **NM**
 OPR **TEXAS PACIFIC OIL CO., INC.** API **30-025-25542**
 NO **62** LEASE **State "A" A/C-2** MA:
Sec 11, T22S, R36E COORD:
1980' FSL, 2310' FWL of Sec **11-2-40 NM**
5 mi SW/Eunice SPD **6-5-77** CMF **11-7-77**

CSC

8 5/8" at 819' w/500 sx
5 1/2" at 3700' w/1125 sx

WELL CLASS: INIT D FIN SUS ELEV L &			
FORMATION	DATUM	FORMATION	DATUM
TD 3700' (QUEN)		PRL	

SUSPENDED OPERATIONS

CONTR **Cactus Drlg. Co.** OPRS ELEV **3540' GL** PD **3700' RT**

F.R. 5-23-77
 (Seven Rivers)
 6-6-77 TD 819'; WOC
 6-14-77 TD 3700'; WOC
 7-11-77 TD 3700'; SI
 Perf (Yates-Seven Rivers-Queen) 3034-3577'
 Frac (3034-3577') 25,000 gals + 25,000# sd
 7-25-77 TD 3700'; SI
 8-2-77 TD 3700'; SI
 11-7-77 TD 3700'; Suspended Operations
 LOGS RUN: CNDL, GRL
 BHT 95 deg
 11-12-77 COMPLETION ISSUED

11-2-40 NM
 IC 30-025-70124-77

5 mi SW/Eunice

CSC

8 5/8" at 819' w/500 sx
5 1/2" at 3700' w/1125 sx

WELL CLASS.		D I IN DG L E L V		I & S
FORMATION	DATUM	FORMATION	DATUM	
ID 3700'	(QUEN)	PRO		

IP (Seven Rivers-Queen) Perfs 3464-3577' F 444 MCFGPD thru
18/64" chk. TP 140#

CONTR	Cactus Drig. Co.	OPERATION	3540' GL	PD	3700' RT
-------	------------------	-----------	----------	----	----------

F.R. 5-23-77
(Seven Rivers)
6-6-77 TD 819'; WOC
6-14-77 TD 3700'; WOC
7-11-77 TD 3700'; SI
Perf (Yates-Seven Rivers-Queen) 3034-3577'
(overall)
Frac (3034-3577') 25,000 gals + 25,000# sd
7-25-77 TD 3700'; SI
8-2-77 TD 3700'; SI
7-3-78 TD 3700'; Complete

11-2-40 NM

7-3-78

Continued

(Yates) FIVE POINT GAUGES:

Flwd 732 MCFGPD, 14/64" chk, 60 mins, TP 412#

Flwd 1191 MCFGPD, 19/64" chk, 60 mins, TP 407#

Flwd 1916 MCFGPD, 32/64" chk, 60 mins, TP 398#

Flwd 2917 MCFGPD, 36/64" ch, 60 mins, TP 389#

Flwd 5010 MCFGPD, 48/64" chk, 60 mins, TP 354#

BHT 95 deg

LOG TOPS: Rustler 1500', Salt 1595', Base

Salt 2835', Yates 3020', Seven Rivers 3336',

Queen 3547'

11-2-40 NM

7-3-78

Continued

LOGS RUN: GRL, CNDL,

11-12-77

COMPLETION ISSUED

7-8-78

RE-ISSUE OF SUSPENDED COMPLETION AND TO ADD
ADDITIONAL FIELD NAME

11-2-40 NM

IC 30-025-70124-77

NEW MEXICO OIL CONSERVATION COMMISSION
WELL LOCATION AND ACREAGE DEDICATION PLAT

Form O-122
Supersedes O-128
Effective 1-1-65

All distances must be from the outer boundaries of the Section

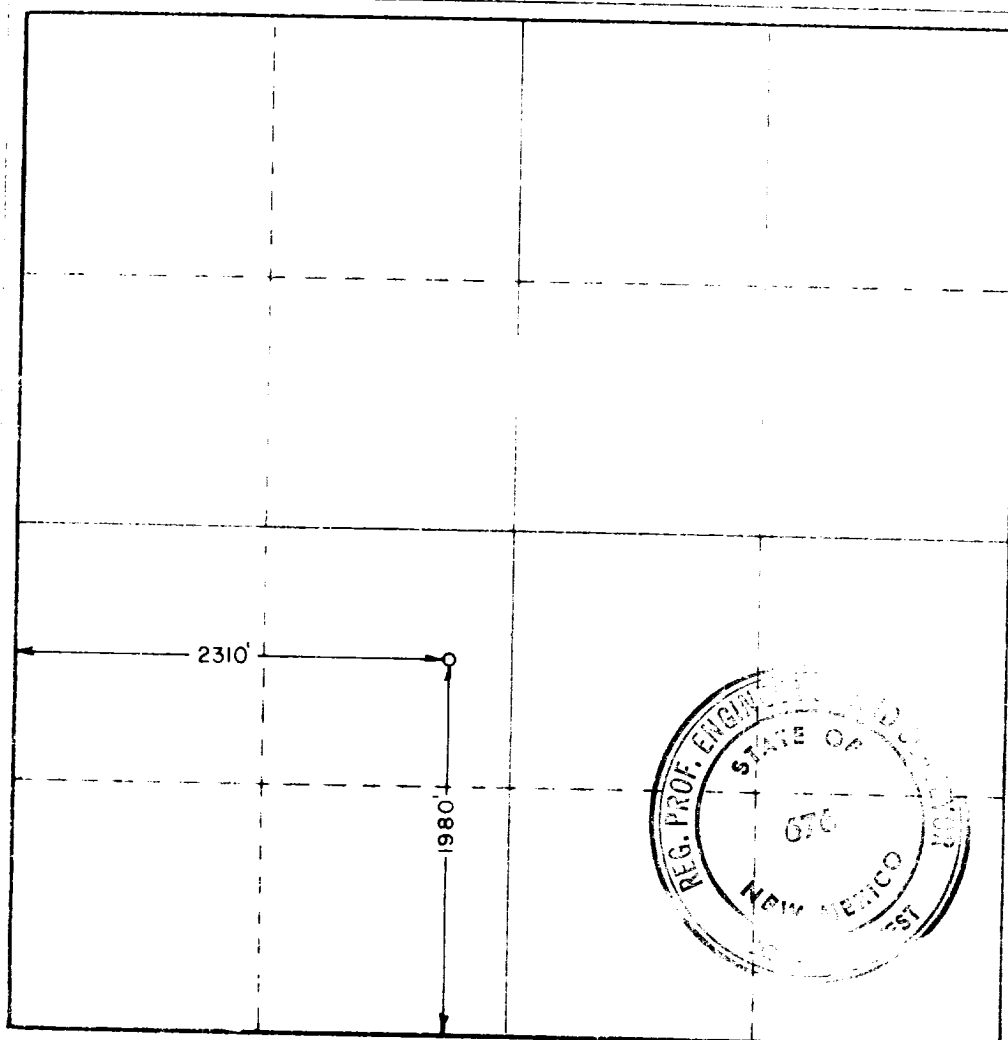
Operator Texas Pacific Oil Company			Lease State "A" Account - 2		Well No. 62
Section 11	Township 22 South	Range 36 East	County Lea County		
Section Location of Well: 1980 feet from the South line and 2310 feet from the West line. Surface Elev. 3539.8 Producing Formation Seven Rivers Rock Jalmit Estimated Acreage 160 Acres					

- Outline the acreage dedicated to the subject well by colored pencil or hatchure marks on the plat below.
- If more than one lease is dedicated to the well, outline each and identify the ownership thereof (both as to working interest and royalty).
- If more than one lease of different ownership is dedicated to the well, have the interests of all owners been consolidated by communitization, unitization, force-pooling, etc?

☐ Yes ☐ No If answer is "yes," type of consolidation _____

If answer is "no," list the owners and tract descriptions which have actually been consolidated (Use reverse side of this form if necessary.) _____

No allowable will be assigned to the well until all interests have been consolidated (by communitization, unitization, forced-pooling, or otherwise) or until a non-standard unit, eliminating such interests, has been approved by the Commission.



CERTIFICATION

I hereby certify that the information contained herein is true and complete to the best of my knowledge and belief.

T. M. Matlock
Name

T. M. Matlock

Position

Drlg. Admin. Supv.

Company

Texas Pacific Oil Co., Inc.

Date

May 13, 1977

I hereby certify that the well location shown on this plat was plotted from field notes of actual surveys made by me or under my supervision, and that the same is true and correct to the best of my knowledge and belief.

Date surveyed

May 3, 1977

Registered Professional Engineer and Land Surveyor

John W. West
Certificate No. 676

330 660 990 1320 1650 1980 2310 2640 2970 3300 3630 3960 4290 4620 4950 5280 5610 5940 6270 6600

RECEIVED

MAY 1 1977

OIL CONSERVATION COMM.
HOBBS, N. M.