

DISTRICT I

P.O. Box 1980, Hobbs, NM 88240

OIL CONSERVATION DIVISION

2040 South Pacheco

Santa Fe, New Mexico 87505

DISTRICT II

P.O. Drawer DD, Artesia, NM 88210

This form is not to be used for
reporting packer leakage tests in
Northwest New Mexico

SOUTHEAST NEW MEXICO PACKER LEAKAGE TEST

Operator RAPTOR RESOURCES INC.			Lease STATE A A/C-2		Well No. 63	
Location of Well	Unit C	Sec 11	Twp 22-S	Rge 36-E	County LEA	
Name of Reservoir or Pool			Type of Prod. (Oil or Gas)	Method of Prod. Flow, Art Lift	Prod. Medium (Tbg. or Csg)	Choke Size
Upper Compl	YATES		GAS	FLOW	CSG	OPEN
Lower Compl	SEVEN RIVERS		GAS	FLOW	TBG	OPEN

FLOW TEST NO. 1

Both zones shut-in at (hour, date): 11:15 AM - 04/10/2000

Well opened at (hour, date): 11:15 AM - 04/11/2000

	Upper Completion	Lower Completion
Indicate by (X) the zone producing.....	X	TA
Pressure at beginning of test.....	62	0
Stabilized? (Yes or No).....	YES	YES
Maximum pressure during test.....	62	0
Minimum pressure during test.....	16	0
Pressure at conclusion of test.....	16	0
Pressure change during test (Maximum minus Minimum).....	46	NC
Was pressure change an increase or a decrease?.....	DEC	NC
Well closed at (hour, date): 11:15 AM - 04/12/2000	Total Time On Production	24 HOURS
Oil Production During Test: 0 bbls; Grav. --	Gas Production During Test: 24	MCF; GOR ---

Remarks

FLOW TEST NO. 2

	Upper Completion	Lower Completion
Well opened at (hour, date): <u>END OF TEST</u>		
Indicate by (X) the zone producing.....		
Pressure at beginning of test.....		
Stabilized? (Yes or No).....		
Maximum pressure during test.....		
Minimum pressure during test.....		
Pressure at conclusion of test.....		
Pressure change during test (Maximum minus Minimum).....		
Was pressure change an increase or a decrease?.....		
Well closed at (hour, date)	Total time on Production	
Oil production During Test: bbls; Grav. ;	Gas Production During Test	MCF; GOR

Remarks LOWER ZONE TA

OPERATOR CERTIFICATE OF COMPLIANCE

I hereby certify that the information contained herein is true
and completed to the best of my knowledge.

RAPTOR RESOURCES INC.

Operator

Signature

RALPH E. ERWIN

PRESIDENT

Printed Name

Title

04/24/2000

505 393-3725

Date

Telephone No.

MP OIL CONSERVATION DIVISION

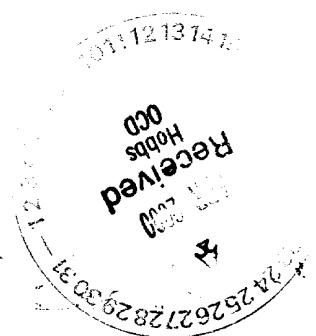
Date Approved

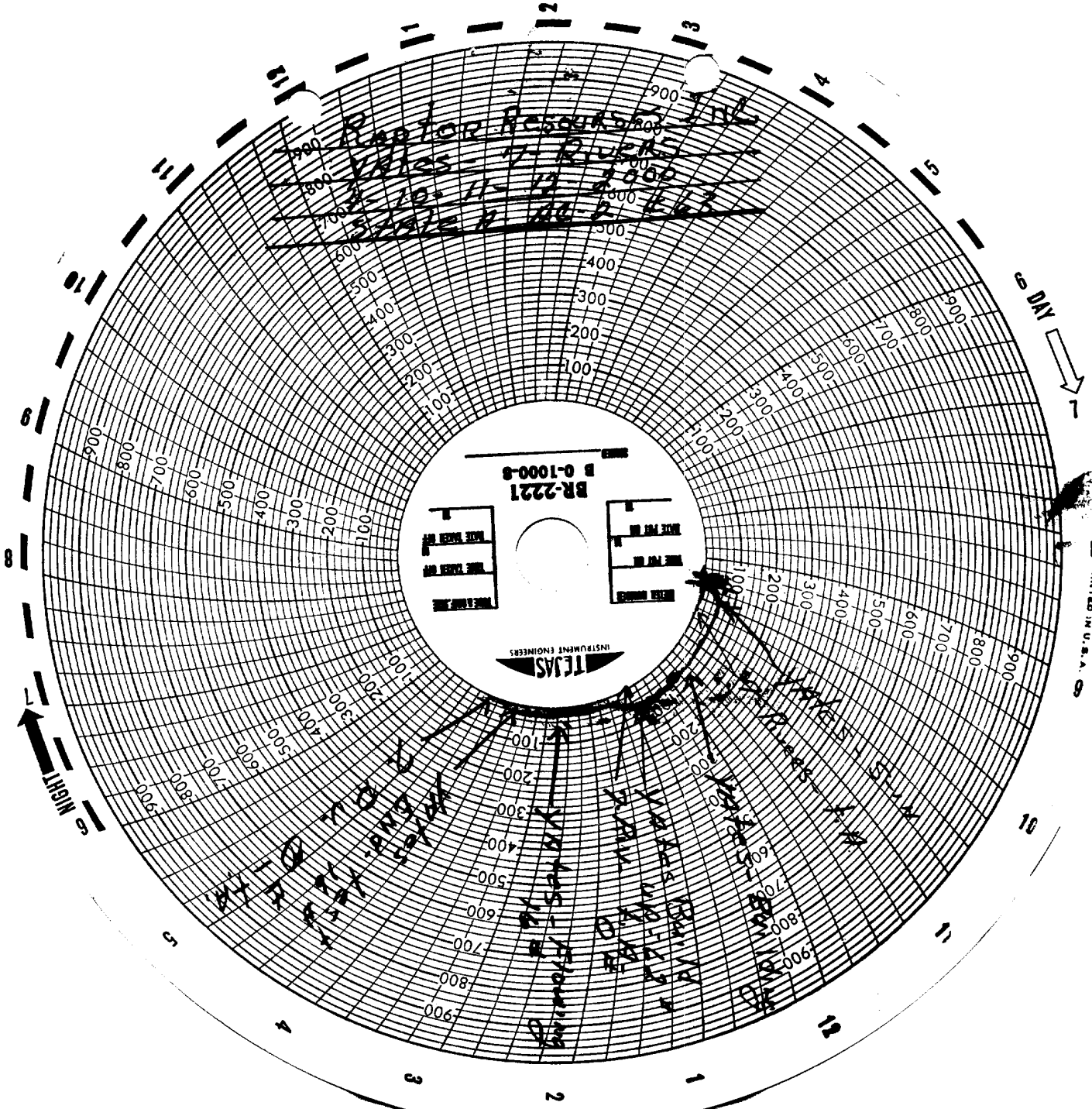
By *ORIGINAL SIGNED BY*

Title

INSTRUCTIONS FOR SOUTHEAST NEW MEXICO PACKER LEAKAGE TEST

1. A packer leakage test shall be commenced on each multiply completed well within seven days after actual completion of the well, and annually thereafter as prescribed by the order authorizing the multiple completion. Such test shall also be commenced on all multiple completions within seven days following recompletion and/or chemical or fracture treatment, and whenever remedial work has been done on a well during which the packer or the tubing have been disturbed. Tests shall also be taken at any time that communication is suspected or when requested by the Division.
2. At least 72 hours prior to the commencement of any packer leakage test, the operator shall notify the Division in writing of the exact time the test is to be commenced. Offset operators shall also be so notified.
3. The packer leakage test shall commence when both zones of the dual completion are shut-in for pressure stabilization. Both zones shall remain shut-in until the well-head pressure in each has stabilized and for minimum of two hours thereafter, provided, however, that they need not remain shut-in more than 24 hours.
4. For Flow Test No. 1, one zone of the dual completion shall be produced at the normal rate of production while the other zone remains shut-in. Such test shall be continued until the flowing wellhead pressure has become stabilized and for minimum of two hours thereafter, provided however, that the flow test need not continue for more than 24 hours.
5. Following completion of Flow Test No. 1, the well shall again be shut-in, in accordance with Paragraph 3 above.
6. Flow Test No. 2 shall be conducted even though no leak was indicated during Flow Test No. 1. Procedure for Flow Test No. 2 is to be the same as for Flow Test No. 1 except that the previously produced zone shall remain shut-in while the previously shut-in zone is produced.
7. All pressures, throughout the entire test, shall be continuously measured and recorded with recording pressure gauges, the accuracy of which must be checked with deadweight tester at least twice, once at the beginning and once at the end, of each flow test.
8. The results of the above-described tests shall be filed in triplicate within 15 days after completion of the test. Tests shall be filed with the appropriate District Office of the New Mexico Oil Conservation Division on Southeast New Mexico Packer Leakage Test Form Revised 1-1-89, together with the original pressure recording gauge charts with all the deadweight pressures which were taken indicated thereon. In lieu of filing the aforesaid charts, the operator may construct a pressure versus time curve from each zone of each test, indicating thereon all pressure changes which may be reflected by the gauge charts as well as all deadweight pressure readings which were taken. If the pressure curve is submitted, the original chart must be permanently filed in the operator's office. Form C-116 shall also accompany the Packer Leakage Test Form when the test period coincides with a gas-oil ratio test period.





AA-2-
we 4 63

