

UNITED STATES
DEPARTMENT OF THE INTERIOR
GEOLOGICAL SURVEY

APPLICATION FOR PERMIT TO DRILL, DEEPEN, OR PLUG BACK

1a. TYPE OF WORK

DRILL ☒DEEPEN ☐PLUG BACK ☐

b. TYPE OF WELL

OIL
WELL ☒GAS
WELL ☐

OTHER

SINGLE
ZONE ☐MULTIPLE
ZONE ☒

2. NAME OF OPERATOR

Continental Oil Company

3. ADDRESS OF OPERATOR

Box 460, Hobbs, N.M. 88240

4. LOCATION OF WELL (Report location clearly and in accordance with any State requirements.)*

At surface

660' FSL & 1980' FWL OF Sec. 26

At proposed prod. zone

Same

14. DISTANCE IN MILES AND DIRECTION FROM NEAREST TOWN OR POST OFFICE*

15. DISTANCE FROM PROPOSED*

LOCATION TO NEAREST
PROPERTY OR LEASE LINE, FT.
(Also to nearest drig. unit line, if any)18. DISTANCE FROM PROPOSED LOCATION*
TO NEAREST WELL, DRILLING, COMPLETED,
OR APPLIED FOR, ON THIS LEASE, FT.

21. ELEVATIONS (Show whether DF, RT, GR, etc.)

3549 GR.

16. NO. OF ACRES IN LEASE

1920 GEOLOGICAL SURV.

19. PROPOSED DEPTH, NEW

7000'

17. NO. OF ACRES ASSIGNED
TO THIS WELL

40

20. ROTARY OR CABLE TOOLS

Rotary

22. APPROX. DATE WORK WILL START*

7-1-77

23. PROPOSED CASING AND CEMENTING PROGRAM

| SIZE OF HOLE | SIZE OF CASING | WEIGHT PER FOOT | SETTING DEPTH | QUANTITY OF CEMENT |
|--------------|----------------|-----------------|---------------|--------------------|
| 12 1/2" | New 9 5/8" | 32.30# | 1550' | 600 SX Circ. |
| 8 3/4" | New 7" | 23# & 26# | 7000' | 1100 SX |

IT IS Proposed To Drill A Straight Hole To A TD
OF 7000' And Complete AS A Dual oil Well IN The
Blindbry & Tubb Zones.

SEE ATTACHED FOR
CONDITIONS OF APPROVAL

See Attached For B.O.P. Program, Mud Program, Formation
TOPS, Logging ETC.

Unless Drilling Operations have
Commenced, this drilling approval
Expires 9-1-77

IN ABOVE SPACE DESCRIBE PROPOSED PROGRAM: If proposal is to deepen or plug back, give data on present productive zone and proposed new productive zone. If proposal is to drill or deepen directionally, give pertinent data on subsurface locations and measured and true vertical depths. Give blowout preventer program, if any.

24.

SIGNED

Wm. A. Butterfield

TITLE

Admin-Supv.

DATE

4-20-77

(This space for Federal or State office use)

PERMIT NO.

APPROVAL DATE

APPROVED BY

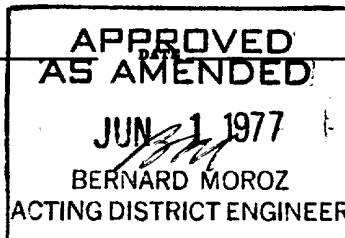
TITLE

CONDITIONS OF APPROVAL, IF ANY:

"APPROVAL TO FLARE GRANTED
WHILE DRILLING AND TESTING."

*See Instructions On Reverse Side

USGS(6), NMFL Partners(4), File(2)



Attachment to Form 9-331 C
Application for Permit to Drill

Continental Oil Company, Warren Unit No. 48
660' FSL and 1980' FWL of Section 26, T-20S, R-38E,
Lea County, New Mexico

1. The geologic name of the surface formation is Pleistocene Sand.
2. The estimated tops of important geologic markers are shown on the attached Proposed Well Plan.
3. The estimated depths at which anticipated water, oil, gas or other mineral-bearing formations to be encountered are as follows:

 Santa Rosa SS 300' water
 Salado 1610' salt
 Blinebry 5960' oil
 Tubb 6450' oil
4. The proposed casing program is as follows:

 Surface - new 9 5/8" 32.30# K-55 STC set at 1550'
 Production - new 7" 23# and 26# K-55 STC set at 7000'
5. A drawing of an API Series 900 Blowout Preventer Specification is attached. Pipe rams and blinds will be checked to 1,000 PSI for 30 minutes when BOP is installed. BOP will be checked when casing string is set and operated daily for checks.
6. The proposed mud program is as follows:

 0-1550' fresh water 8.5-9.0 pounds per gallon
 1550'-7000' salt gel 9.0-10.0 pounds per gallon
7. The auxiliary equipment to be used is:

 (1) kelly cocks
 (2) floats at the bit
8. It is proposed to run GR-CNL-FDC-DLL logs from TD to 2600'.
9. No abnormal pressures or temperatures are expected to be encountered in this well.
10. The anticipated starting date for this well is July 1, 1977, with a duration date of approximately 21 days.

NEW MEXICO OIL CONSERVATION COMMISSION
WELL LOCATION AND ACREAGE DEDICATION PLAT

Form C-122
Supersedes C-121
Effective 1-1-65

All distances must be from the outer boundaries of the Section

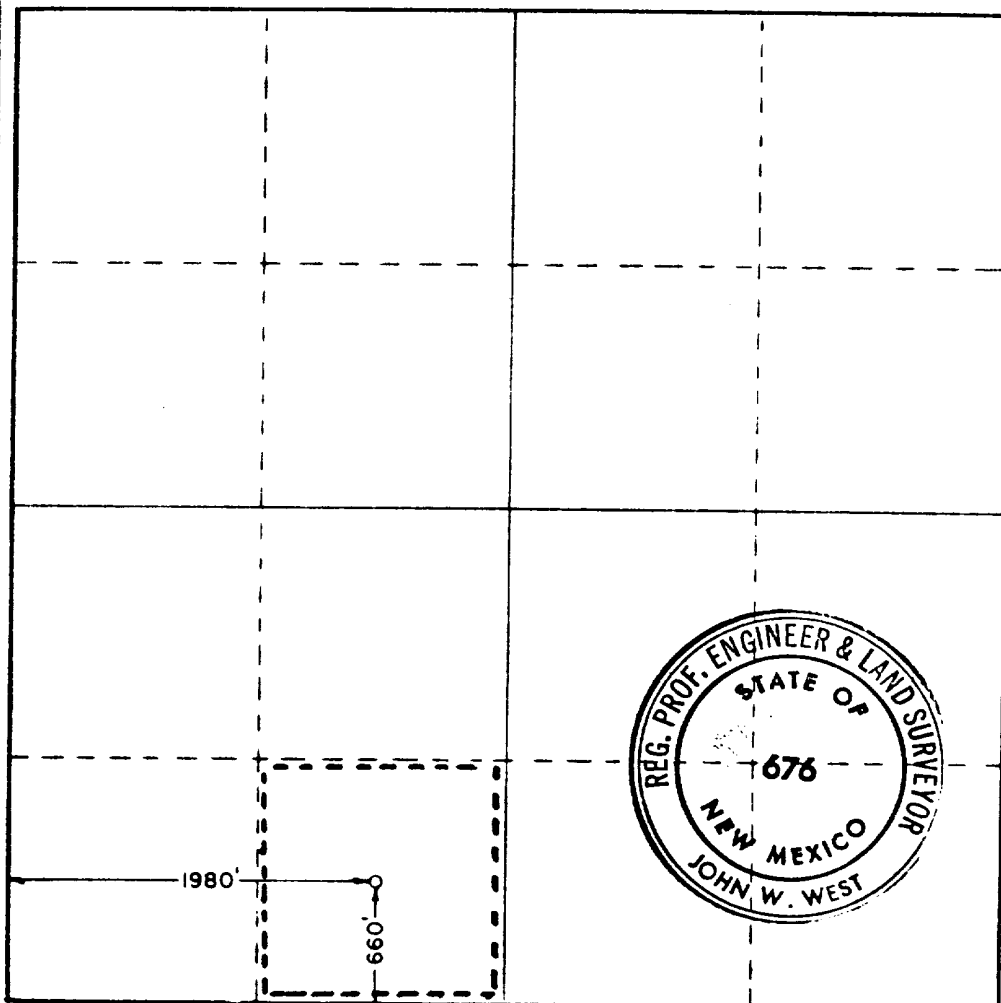
| | | | | |
|--|--|-----------------------------|-------------------------|--------------------------------|
| Operator CONTINENTAL OIL COMPANY | | Lease WARREN UNIT | | Well No. 48 |
| Grid Letter N | Section 26 | Township 20 South | Range 38 East | County Lea |
| Actual Footage Location of Well: | | | | |
| 660 | feet from the South | line and | 1980 | feet from the West line |
| Surface Elevation 3549.4 | Producing Formation Blinn & Tubb | | Pool WARREN | Dedicated Acreage 40 |

1. Outline the acreage dedicated to the subject well by colored pencil or hatchure marks on the plat below.
2. If more than one lease is dedicated to the well, outline each and identify the ownership thereof (both as to working interest and royalty).
3. If more than one lease of different ownership is dedicated to the well, have the interests of all owners been consolidated by communitization, unitization, force-pooling, etc?

☐ Yes ☐ No If answer is "yes," type of consolidation _____

If answer is "no," list the owners and tract descriptions which have actually been consolidated. (Use reverse side of this form if necessary.) _____

No allowable will be assigned to the well until all interests have been consolidated (by communitization, unitization, forced-pooling, or otherwise) or until a non-standard unit, eliminating such interests, has been approved by the Commission.



CERTIFICATION

I hereby certify that the information contained herein is true and complete to the best of my knowledge and belief

Name
John A. Duthie
Position
Admin. Sec'y.
Company
Continental Oil Co.
Date
4-20-77

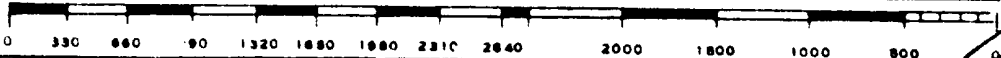
I hereby certify that the well location shown on this plat was plotted from field notes of actual surveys made by me or under my supervision, and that the same is true and correct to the best of my knowledge and belief

Date Surveyed
March 20, 1977

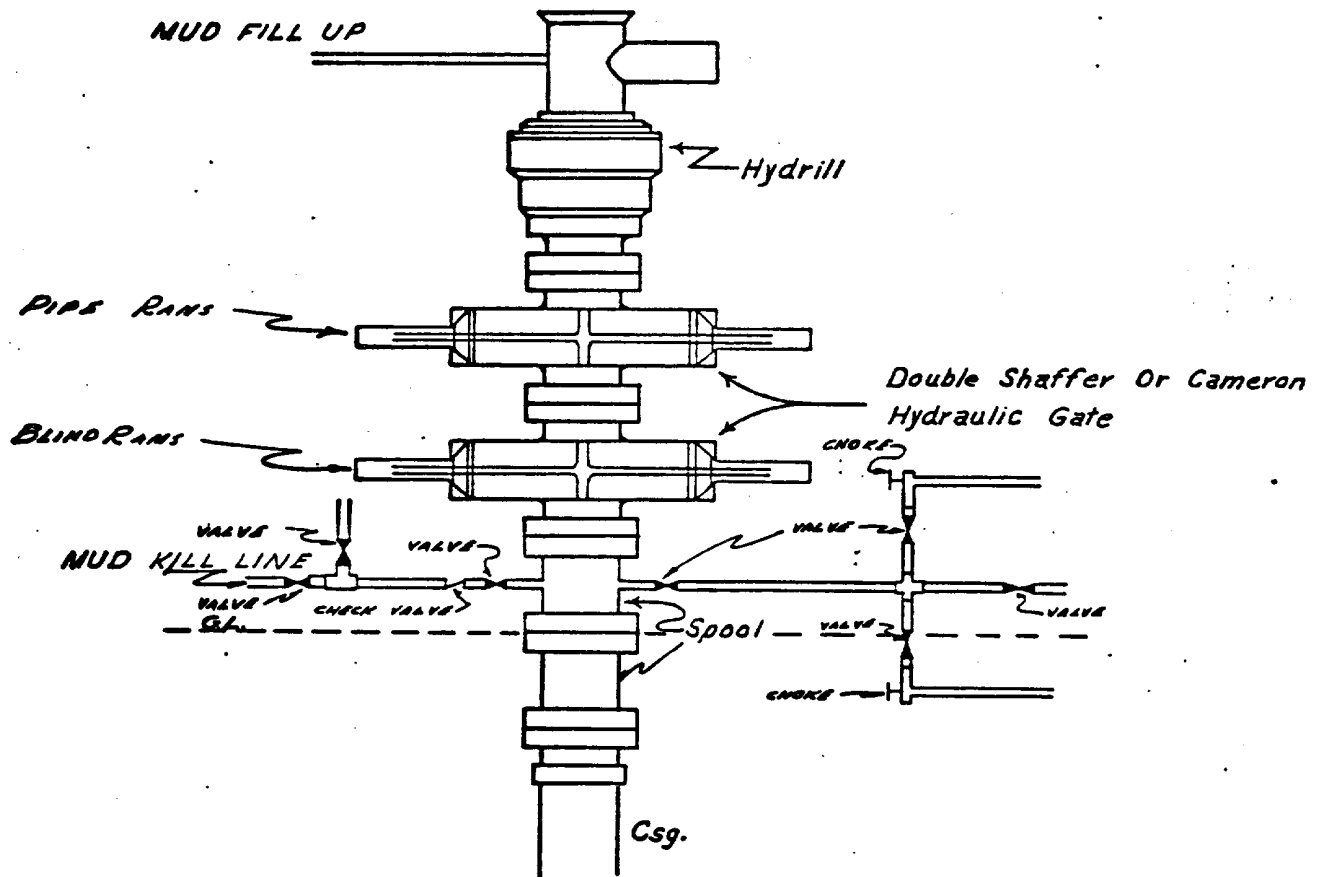
Registered Professional Engineer and/or Land Surveyor

John W. West
Certificate No.

676



CONINENTAL OIL COMPANY
Blow-out Preventer Specifications



API Series 900

NOTE:

Manual and Hydraulic controls with closing unit no less than 75' from well head.
Remote controls on rig floor.

DUE TO SUBSTRUCTURE CLEARANCE,
HYDRILL MAY OR MAY NOT BE USED.

WARREN UNIT NO. 48

WELL NAME: Warren Unit No. 48
660' FSL & 1980' F
LOCATION: Sec. 26, T205, R38E

COUNTY: Lea
STATE: New Mexico

| DEPTH | FORMATION TOPS & TYPE | DRILLING PROBLEMS | TYPE OF FORMATION EVALUATION | HOLE SIZE (IN) | CASING | | FRACTURE GRADIENT (PPG) | FORMATION PRESSURE GRADIENT (PPG) | MUD | |
|-------|---|---|------------------------------------|----------------------|--------------|---------------|-------------------------------|--|-----------------|----------------|
| | | | | | SIZE (IN) | DEPTH (FT) | | | WEIGHT (PPG) | TYPE |
| 0 | Pleistocene | | | | | | | | | |
| 100 | Santa Rosa ss, 90'-300' | | | | | | | | | |
| 150 | | | | | | | | | | |
| 200 | Rustler anhy, Salado 1490 Salt 1610 | Geolograph 5' TD | | 12 1/4 | 9 5/8 | 1550' | | | 8.5- 9.0 | FRESH WATER |
| 250 | | | | | | | | | | |
| 300 | Tansill anhy, 2670 | Dipmeter 5400 TD | | | | | | | | |
| 350 | | | | | | | | | | |
| 400 | | | | | | | | | | |
| 450 | | | | | | | | | | |
| 500 | | | | | | | | | | |
| 550 | Glorieta ss, 5510 | | | | | | | | | |
| 600 | Bluebry dolo, 5960 | | GR-CNL-FDC DLL TD-2600' | | | | 14.9- 15.4 | LESS THAN 8.5 | | |
| 650 | Tubb ss, 6450 | | Dipmeter | | | | 15.1- 15.6 | LESS THAN 8.5 | | |
| 700 | Drinkard dol, 6740 | | TD-5400' | 8 3/4 | 7 | 7000 | | | 9.0- 10.0 | SALT GEL |
| 750 | TD 7000 | | | | | | | | | |
| 800 | | | | | | | | | | |
| 850 | | | | | | | | | | |
| 900 | | | | | | | | | | |
| 950 | | | | | | | | | | |
| 1000 | | | | | | | | | | |
| 1050 | | | | | | | | | | |
| 1100 | | | | | | | | | | |
| 1150 | | | | | | | | | | |
| 1200 | | | | | | | | | | |
| 1250 | | | | | | | | | | |
| 1300 | | | | | | | | | | |
| 1350 | | | | | | | | | | |
| 1400 | | | | | | | | | | |
| 1450 | | | | | | | | | | |
| 1500 | | | | | | | | | | |
| 1550 | | | | | | | | | | |
| 1600 | | | | | | | | | | |
| 1650 | | | | | | | | | | |
| 1700 | | | | | | | | | | |
| 1750 | | | | | | | | | | |
| 1800 | | | | | | | | | | |
| 1850 | | | | | | | | | | |
| 1900 | | | | | | | | | | |
| 1950 | | | | | | | | | | |
| 2000 | | | | | | | | | | |
| 2050 | | | | | | | | | | |
| 2100 | | | | | | | | | | |
| 2150 | | | | | | | | | | |
| 2200 | | | | | | | | | | |
| 2250 | | | | | | | | | | |
| 2300 | | | | | | | | | | |
| 2350 | | | | | | | | | | |
| 2400 | | | | | | | | | | |
| 2450 | | | | | | | | | | |
| 2500 | | | | | | | | | | |
| 2550 | | | | | | | | | | |
| 2600 | | | | | | | | | | |
| 2650 | | | | | | | | | | |
| 2700 | | | | | | | | | | |
| 2750 | | | | | | | | | | |
| 2800 | | | | | | | | | | |
| 2850 | | | | | | | | | | |
| 2900 | | | | | | | | | | |
| 2950 | | | | | | | | | | |
| 3000 | | | | | | | | | | |
| 3050 | | | | | | | | | | |
| 3100 | | | | | | | | | | |
| 3150 | | | | | | | | | | |
| 3200 | | | | | | | | | | |
| 3250 | | | | | | | | | | |
| 3300 | | | | | | | | | | |
| 3350 | | | | | | | | | | |
| 3400 | | | | | | | | | | |
| 3450 | | | | | | | | | | |
| 3500 | | | | | | | | | | |
| 3550 | | | | | | | | | | |
| 3600 | | | | | | | | | | |
| 3650 | | | | | | | | | | |
| 3700 | | | | | | | | | | |
| 3750 | | | | | | | | | | |
| 3800 | | | | | | | | | | |
| 3850 | | | | | | | | | | |
| 3900 | | | | | | | | | | |
| 3950 | | | | | | | | | | |
| 4000 | | | | | | | | | | |
| 4050 | | | | | | | | | | |
| 4100 | | | | | | | | | | |
| 4150 | | | | | | | | | | |
| 4200 | | | | | | | | | | |
| 4250 | | | | | | | | | | |
| 4300 | | | | | | | | | | |
| 4350 | | | | | | | | | | |
| 4400 | | | | | | | | | | |
| 4450 | | | | | | | | | | |
| 4500 | | | | | | | | | | |
| 4550 | | | | | | | | | | |
| 4600 | | | | | | | | | | |
| 4650 | | | | | | | | | | |
| 4700 | | | | | | | | | | |
| 4750 | | | | | | | | | | |
| 4800 | | | | | | | | | | |
| 4850 | | | | | | | | | | |
| 4900 | | | | | | | | | | |
| 4950 | | | | | | | | | | |
| 5000 | | | | | | | | | | |
| 5050 | | | | | | | | | | |
| 5100 | | | | | | | | | | |
| 5150 | | | | | | | | | | |
| 5200 | | | | | | | | | | |
| 5250 | | | | | | | | | | |
| 5300 | | | | | | | | | | |
| 5350 | | | | | | | | | | |
| 5400 | | | | | | | | | | |
| 5450 | | | | | | | | | | |
| 5500 | | | | | | | | | | |
| 5550 | | | | | | | | | | |
| 5600 | | | | | | | | | | |
| 5650 | | | | | | | | | | |
| 5700 | | | | | | | | | | |
| 5750 | | | | | | | | | | |
| 5800 | | | | | | | | | | |
| 5850 | | | | | | | | | | |
| 5900 | | | | | | | | | | |
| 5950 | | | | | | | | | | |
| 6000 | | | | | | | | | | |
| 6050 | | | | | | | | | | |
| 6100 | | | | | | | | | | |
| 6150 | | | | | | | | | | |
| 6200 | | | | | | | | | | |
| 6250 | | | | | | | | | | |
| 6300 | | | | | | | | | | |
| 6350 | | | | | | | | | | |
| 6400 | | | | | | | | | | |
| 6450 | | | | | | | | | | |
| 6500 | | | | | | | | | | |
| 6550 | | | | | | | | | | |
| 6600 | | | | | | | | | | |
| 6650 | | | | | | | | | | |
| 6700 | | | | | | | | | | |
| 6750 | | | | | | | | | | |
| 6800 | | | | | | | | | | |
| 6850 | | | | | | | | | | |
| 6900 | | | | | | | | | | |
| 6950 | | | | | | | | | | |
| 7000 | | | | | | | | | | |
| 7050 | | | | | | | | | | |
| 7100 | | | | | | | | | | |
| 7150 | | | | | | | | | | |
| 7200 | | | | | | | | | | |
| 7250 | | | | | | | | | | |
| 7300 | | | | | | | | | | |
| 7350 | | | | | | | | | | |
| 7400 | | | | | | | | | | |
| 7450 | | | | | | | | | | |
| 7500 | | | | | | | | | | |
| 7550 | | | | | | | | | | |
| 7600 | | | | | | | | | | |
| 7650 | | | | | | | | | | |
| 7700 | | | | | | | | | | |
| 7750 | | | | | | | | | | |
| 7800 | | | | | | | | | | |
| 7850 | | | | | | | | | | |
| 7900 | | | | | | | | | | |
| 7950 | | | | | | | | | | |
| 8000 | | | | | | | | | | |
| 8050 | | | | | | | | | | |
| 8100 | | | | | | | | | | |
| 8150 | | | | | | | | | | |
| 8200 | | | | | | | | | | |
| 8250 | | | | | | | | | | |
| 8300 | | | | | | | | | | |
| 8350 | | | | | | | | | | |
| 8400 | | | | | | | | | | |
| 8450 | | | | | | | | | | |
| 8500 | | | | | | | | | | |
| 8550 | | | | | | | | | | |
| 8600 | | | | | | | | | | |
| 8650 | | | | | | | | | | |
| 8700 | | | | | | | | | | |
| 8750 | | | | | | | | | | |
| 8800 | | | | | | | | | | |
| 8850 | | | | | | | | | | |
| 8900 | | | | | | | | | | |
| 8950 | | | | | | | | | | |
| 9000 | | | | | | | | | | |
| 9050 | | | | | | | | | | |
| 9100 | | | | | | | | | | |
| 9150 | | | | | | | | | | |
| 9200 | | | | | | | | | | |
| 9250 | | | | | | | | | | |
| 9300 | | | | | | | | | | |
| 9350 | | | | | | | | | | |
| 9400 | | | | | | | | | | |
| 9450 | | | | | | | | | | |
| 9500 | | | | | | | | | | |
| 9550 | | | | | | | | | | |
| 9600 | | | | | | | | | | |
| 9650 | | | | | | | | | | |
| 9700 | | | | | | | | | | |
| 9750 | | | | | | | | | | |
| 9800 | | | | | | | | | | |
| 9850 | | | | | | | | | | |
| 9900 | | | | | | | | | | |
| 9950 | | | | | | | | | | |
| 10000 | | | | | | | | | | |

Prepared by _____

proved _____

U. S. Geological Survey

HOBBS DISTRICT

Continental Oil Co.
No. 48 Warren Unit
SE $\frac{1}{4}$ SW $\frac{1}{4}$ sec. 26-20S-38E
Lea County, N. M.

Above Data Required on Well Sign

CONDITIONS OF APPROVAL

1. Drilling operations authorized are subject to compliance with the attached General Requirements for Drilling Operations on Federal Oil and Gas Leases, dated January 1, 1977.
2. Notify this office (telephone (505) 393-3612) when the well is to be spudded and in sufficient time for a representative to witness all cementing operations. Attached are names and telephone numbers of Geological Survey and Bureau of Land Management personnel who are available for consultation during construction, drilling, completion, and rehabilitation activities.
3. Immediate notice is required of all blowouts, fires, spills, and accidents involving life-threatening injuries or loss of life.
4. Secure prior approval of the District Engineer for variance from the approved drilling program and before commencing plugging operations, plug-back work, casing repair work, corrective cementing operations, or suspending drilling operations indefinitely.
5. Blowout prevention equipment is to be installed, tested, and in working order before drilling below the surface casing and shall be maintained ready for use until drilling operations are completed.
6. Operations must be in compliance with the landowner agreement concerning surface disturbance and surface restoration.
7. Powerline construction: Sheet 1-A must meet requirements 1 & 2 listed on that sheet. Drawing No. ES9 must meet requirements 1, 2, 3, and 4 listed in that drawing.

RECEIVED

JUL 17 1977

U.S. DEPARTMENT OF JUSTICE
FEDERAL BUREAU OF INVESTIGATION

173