

UNITED STATES
DEPARTMENT OF THE INTERIOR
GEOLOGICAL SURVEY

APPLICATION FOR PERMIT TO DRILL, DEEPEN, OR PLUG BACK

1a. TYPE OF WORK

DRILL ☒DEEPEN ☐PLUG BACK ☐

b. TYPE OF WELL

OIL
WELL ☒GAS
WELL ☐

OTHER

SINGLE
ZONE ☐MULTIPLE
ZONE ☒

2. NAME OF OPERATOR

Adobe Oil & Gas Corporation

3. ADDRESS OF OPERATOR

1100 Western United Life Bldg., Midland, Texas 79701

4. LOCATION OF WELL (Report location clearly and in accordance with any State requirements.*)

At surface

1980' FNL 660' FWL

At proposed prod. zone

14. DISTANCE IN MILES AND DIRECTION FROM NEAREST TOWN OR POST OFFICE*

10 mi. NE Eunice, New Mexico

15. DISTANCE FROM PROPOSED*

LOCATION TO NEAREST
PROPERTY OR LEASE LINE, FT.
(Also to nearest drlg. unit line, if any)

660'

16. NO. OF ACRES IN LEASE

280

17. NO. OF ACRES ASSIGNED
TO THIS WELL

40

18. DISTANCE FROM PROPOSED LOCATION*
TO NEAREST WELL, DRILLING, COMPLETED,
OR APPLIED FOR, ON THIS LEASE, FT.

1320'

19. PROPOSED DEPTH

7200'

20. ROTARY OR CABLE TOOLS

Rotary

21. ELEVATIONS (Show whether DF, RT, GR, etc.)

3584 GLM

22. APPROX. DATE WORK WILL START*

December 4, 1977

23. PROPOSED CASING AND CEMENTING PROGRAM

SIZE OF HOLE	SIZE OF CASING	WEIGHT PER FOOT	SETTING DEPTH	QUANTITY OF CEMENT
20"	15"	Conductor	40'	6 yds. (to Surface)
12-1/4"	9-5/8"	36	1650'	750 sx. (to Surface)
8-3/4"	7"	23 & 26	7200'	780 sx.

We propose to set 40' of conductor pipe, drill a 12-1/4" hole to 1650' ± (80' Rustler). Run 9-5/8" surface casing & cement to surface. 8-3/4" hole will be drilled to a depth of 7200' ± and 7" casing run for the production string. We anticipate a dual completion in the Blinbry oil & gas pool & the Warren (Tubb) oil pool.

*NMOC Approval is required for
Dual Completion*

CONFIDENTIAL

3-5-78

IN ABOVE SPACE DESCRIBE PROPOSED PROGRAM: If proposal is to deepen or plug back, give data on present productive zone and proposed new productive zone. If proposal is to drill or deepen directionally, give pertinent data on subsurface locations and measured and true vertical depths. Give blowout preventer program, if any.

24.

SIGNED

TITLE

District Prod. Manager

DATE

11/23/77

(This space for Federal or State office use)

PERMIT NO.

APPROVAL DATE

APPROVED BY

TITLE

CONDITIONS OF APPROVAL, IF ANY:

APPROVED
AS AMENDED
DEC 5 1977
ARTHUR R. BROWN
DISTRICT ENGINEER

*See Instructions On Reverse Side

N. MEXICO OIL CONSERVATION COMMISSION
WELL LOCATION AND ACREAGE DEDICATION

Form C-102
 Supersedes C-128
 Effective 1-1-65

All distances must be from the outer boundaries of the Section.

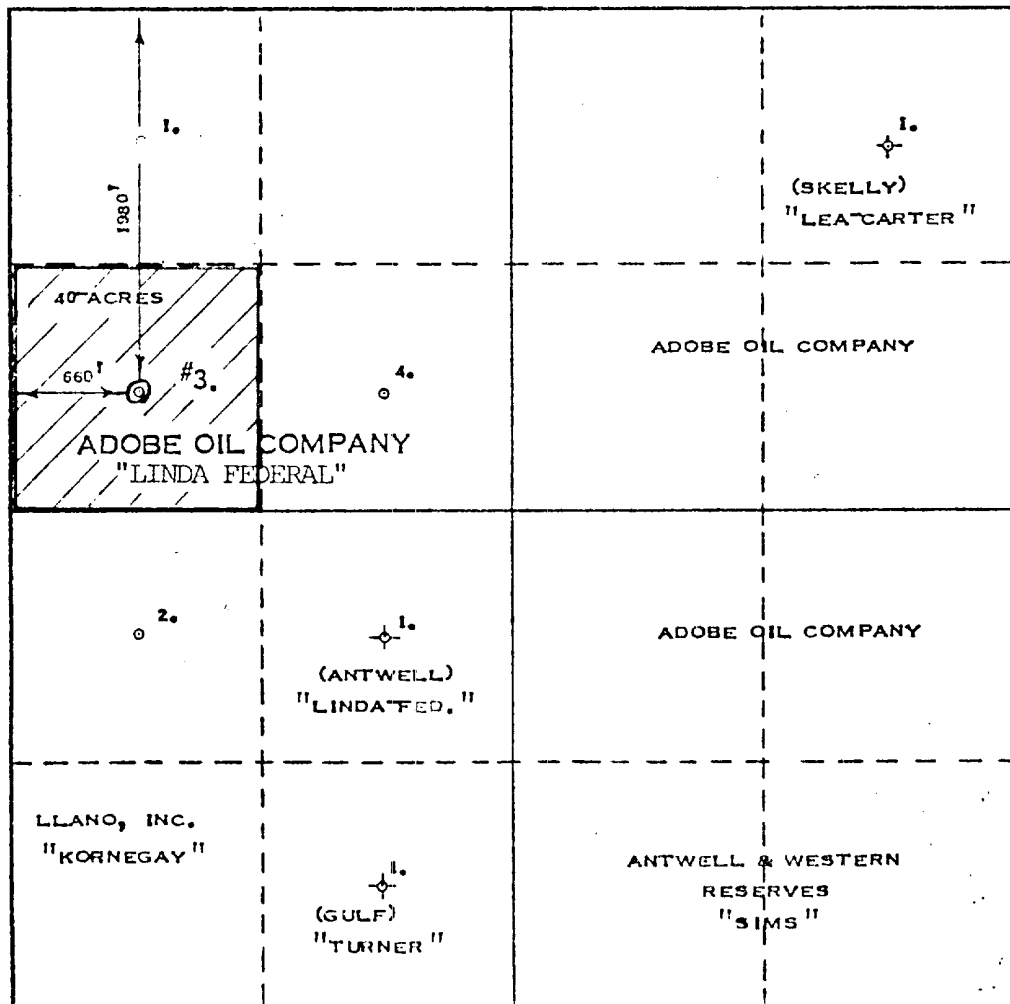
Operator ADOBE OIL COMPANY			Lease LINDA FEDERAL		Well No. 3
Unit Letter "E"	Section 23	Township 20 - S	Range 38 - E	County LEA	
Actual Footage Location of Well: 1980 feet from the NORTH line and 660 feet from the WEST line					
Ground Level Elev. 3584	Producing Formation DUAL		Pool BLINEBRY - TUBB		Dedicated Acreage: 40 Acres

1. Outline the acreage dedicated to the subject well by colored pencil or hachure marks on the plat below.
2. If more than one lease is dedicated to the well, outline each and identify the ownership thereof (both as to working interest and royalty).
3. If more than one lease of different ownership is dedicated to the well, have the interests of all owners been consolidated by communitization, unitization, force-pooling, etc?

☐ Yes ☐ No If answer is "yes," type of consolidation NA

If answer is "no," list the owners and tract descriptions which have actually been consolidated. (Use reverse side of this form if necessary.) _____

No allowable will be assigned to the well until all interests have been consolidated (by communitization, unitization, forced-pooling, or otherwise) or until a non-standard unit, eliminating such interests, has been approved by the Commission.



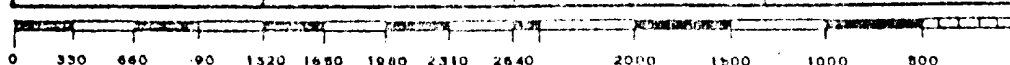
CERTIFICATION

I hereby certify that the information contained herein is true and complete to the best of my knowledge and belief.

Name Carl B. ...
 Position Dist. Prod. Mar.
 Company Adobe Oil Company
 Date Nov. 16, 1977

I hereby certify that the well location shown on this plat was plotted from field notes of actual surveys made by me or under my supervision, and that the same is true and correct to the best of my knowledge and belief.

Date Surveyed NOVEMBER 15, 1977
 Registered Professional Engineer and/or Land Surveyor
MAX A. SCHUMANN JR.
 Certificate No. 1510



ADOBE OIL & GAS CORPORATION

1100 WESTERN UNITED LIFE BLDG.
MIDLAND, TEXAS 79701
915 683-4701

SUBSIDIARIES
ADOBE CORPORATION
ADOBE OIL COMPANY
ADOBE INVESTMENT CORPORATION
ADOBE ROYALTY INC.
ADOBE INTERNATIONAL INC.
ADOBE MARKETING CORPORATION
ADOBE HOLLAND, INC.
TELEX 743413

November 22, 1977

LINDA FEDERAL #3

Adobe Oil & Gas Corporation

660 BWL & 1980 FNL of Section 23, T-20-S, R-38-E, Lea Co., NM

COMPLIANCE W/ NTL-6

1. Surface formation is tertiary w/blow sand cover.
2. Formation tops:
 - Rustler 1580' (anhydrite)
 - Yates 2850'
 - San Andres 4230'
 - Glorieta 5520'
 - Blinberry 5990'
 - Tubb 6550'
 - T.D. 7200'±
3. As above.
4. 15" conductor will be set @ 40' & cemented to surface. 9-5/8" 36# K-55 ST&C new csg will be set @ 1650'± & cemented to surface. 7" 23 and 26# K-55 STUC new csg will be set @ 7200'±.
5. Double gate preventor with blind & pipe rams will be used w/3000# pressure rating. We plan to nipple up BOP & test to 1000# prior to drilling plug in surface csg @ 1650'. Preventors will be tested daily during operations.
6. 9.6#/gal salt mud will be used as drilling fluid.
7. No abnormal pressures or lost circulation zones are present in this area; therefore, a minimum of auxillary equipment will be necessary. A full opening valve will be available on floor to be stabbed into DP when Kelly is not in the string.
8. No testing or coring will be done prior to setting csg. Logs will be run from T.D. to surface casing @ 1650'±. The log suite will include Gr-Sonic w/caliper and Dual Laterolog.
9. No abnormal pressure or temperature will be encountered.
10. Hydrogen sulfide is not present. Wellhead equipment will be designed for 3000# maximum pressure (series 900). Anticipated starting date will be December 4, 1977 or as soon as approval is obtained from U.S.G.S.

RECEIVED

1957

GA. COMMISSIONER OF CORR.
RECEIVED N. M.

ADOBE OIL & GAS CORPORATION

1100 WESTERN UNITED LIFE BLDG.
MIDLAND, TEXAS 79701
915 683-4701

SUBSIDIARIES
ADOBE CORPORATION
ADOBE OIL COMPANY
ADOBE INVESTMENT CORPORATION
ADOBE ROYALTY INC.
ADOBE INTERNATIONAL, INC.
ADOBE MARKETING CORPORATION
ADOBE HOLLAND, INC.
TELEX 743413

November 23, 1977

SURFACE USE AND OPERATIONS PLAN

OPERATOR: Adobe Oil & Gas Corporation
WELL NAME: Linda Federal #3
LOCATION: 660' FWL & 1980 FNL of Sec. 23, T-20-S, R-38-E
COUNTY & STATE: Lea County, New Mexico

1. Existing Roads:

Existing lease road to the Linda Federal #1 well will be used. This road exits from Highway 18, approximately 10 miles north of Eunice, New Mexico.

See attached map (1)

11. Planned Access Roads:

A road will be constructed from the NE corner of the Linda Federal #1 well, due North to the SE corner of the location proposed for the Linda Federal #4 well (Approximately 1200' north) the west to the SE corner of the location (Approximately 1200' west).

See attached map (1)

111. Location of Existing Wells: Existing wells in the area are operated by Adobe Oil Co. SEE ATTACHED MAP

IV. Location of Tank Batteries, Production Facilities, and Production, Gathering and Service Lines:

SEE ATTACHED MAP

The well will be tied into the existing battery at the Linda Federal #1. Pipelines will be run on the north side of the road row to a point east of the proposed location for well #4, then south to the battery along the east side of the road on the R.O.W.

V. Location and Type of Water Supply (Rivers, Creeks, Lakes, Ponds, and Wells):

Water will be trucked to location from Eunice, NM approximately 10 miles SW of the location. There is no water available in the immediate proximity of the well.

VI. Source of Construction Materials:

Caliche will be hauled from Mr. Earl Kornegay's pit located in Section 22, T-20-S, R-38-E, Lea Co., NM. This pit is approximately 1-1/4 mile from the location by road.

VII. Methods for Handling Waste Disposal:

Burn pits adequately deep will be used for ordinary combustible trash. Enclosed and protected sumps will be used for oil and other toxic wastes, if necessary. Burning will be kept to a minimum and non-combustibles will be buried below plow depths.

RECEIVED

U.S. DEPARTMENT OF COMMERCE
BUREAU OF COMMERCE

if necessary. Burning will be kept to a minimum and non-combustibles will be buried below plow depths.

III. Ancillary Facilities:

No camp or airstrip will be constructed.

IX. Well Site Layout:

It will be necessary to construct 1200 ft of road & location, as per attached plat, & surface both w/caliche.
SEE ATTACHED PLAT.

X. Plans for Restoration of the Surface:

Upon completion of the well, pits will remain fenced until they can be cleaned up. Pits will be filled and the location restored to original contours as per agreement with Mr. E. Kornegay, surface owner. All non-combustible trash will be buried.

XI. Other Information:

Topography - Flat, gentle slope to west beyond location.

Blow sand with scrub oak & native grasses

Surface Lease - Mr. E. Kornegay

No dwellings, water, or historical sites are on or near proposed location.

XII. Lessee's or Operator's Representative:

Name: Bob Ritchie

Address: 1612 Hodges Street, Midland, Texas 79701

Phone: 915/683-3925 (home) 915/683-4701 (office)

Carl Bond 915/683-7859 (home) 915/683-4701 (office)

Red Rogers 915/694-1371 (home) 915/683-4701 (office)

III. Certification:

I hereby certify that I, or persons under my direct supervision have inspected the proposed drillsite and access route; that I am familiar with the conditions which presently exist; that the statements made in this plan are, to the best of my knowledge, true and correct; and, that the work associated with the operations proposed herein will be performed by Adobe Oil Company and its contractors and subcontractors in conformity with this plan and the terms and conditions under which it is approved.

11-22-77
Date

Carl Bond
Name and Title

Dist. Prod. Mgr.

Hwy 18

T 20 S R 38 E

23

LINDA FED.

#1

EXISTING BATTERY

EXISTING ROADS
12' WIDE

TURNOUTS

16' GATTLEGUARD

EUNICE, N. MEX.

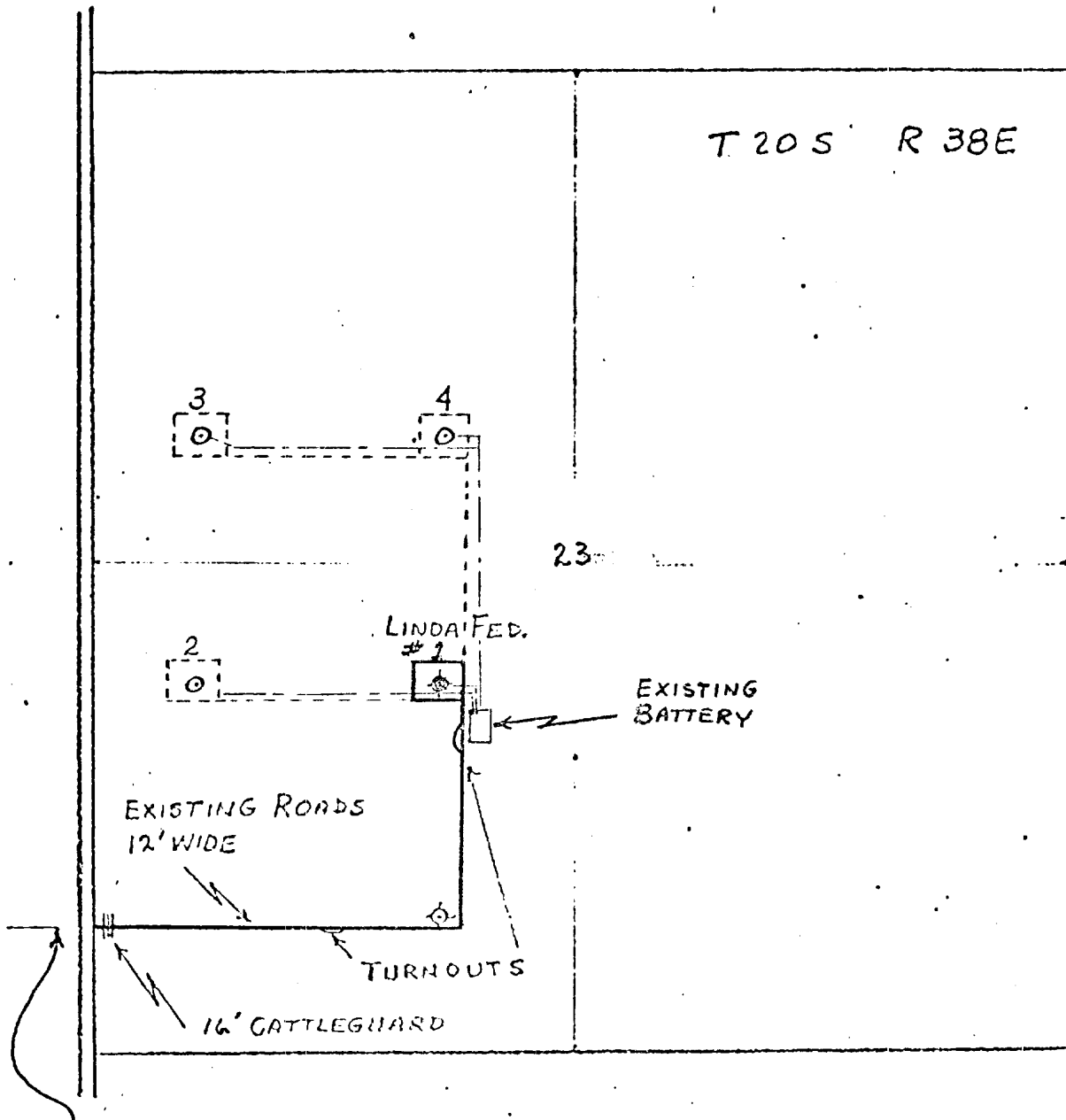
10 MI.

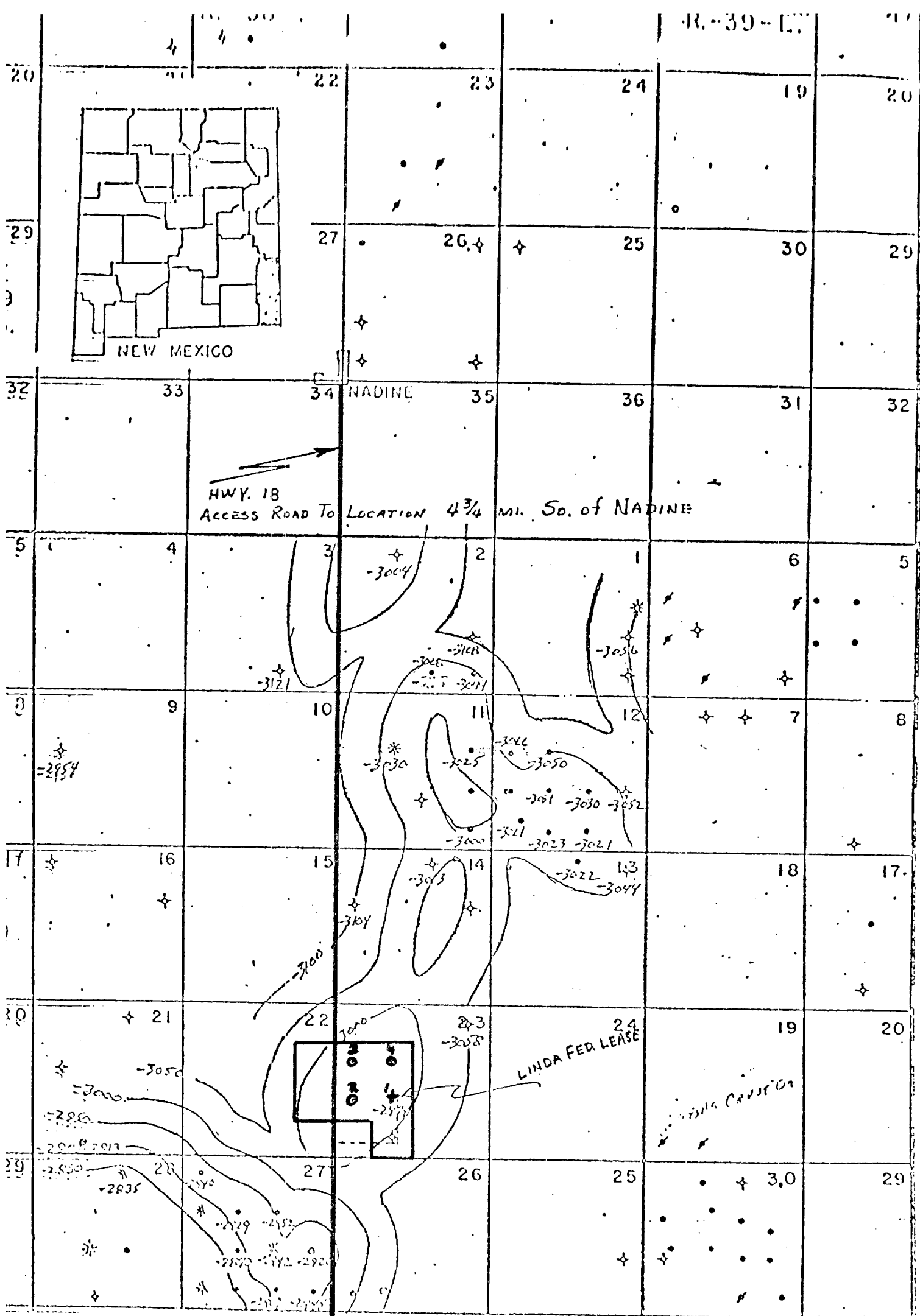
EXISTING ROADS

PROPOSED ROADS

PROPOSED PIPELINES

①

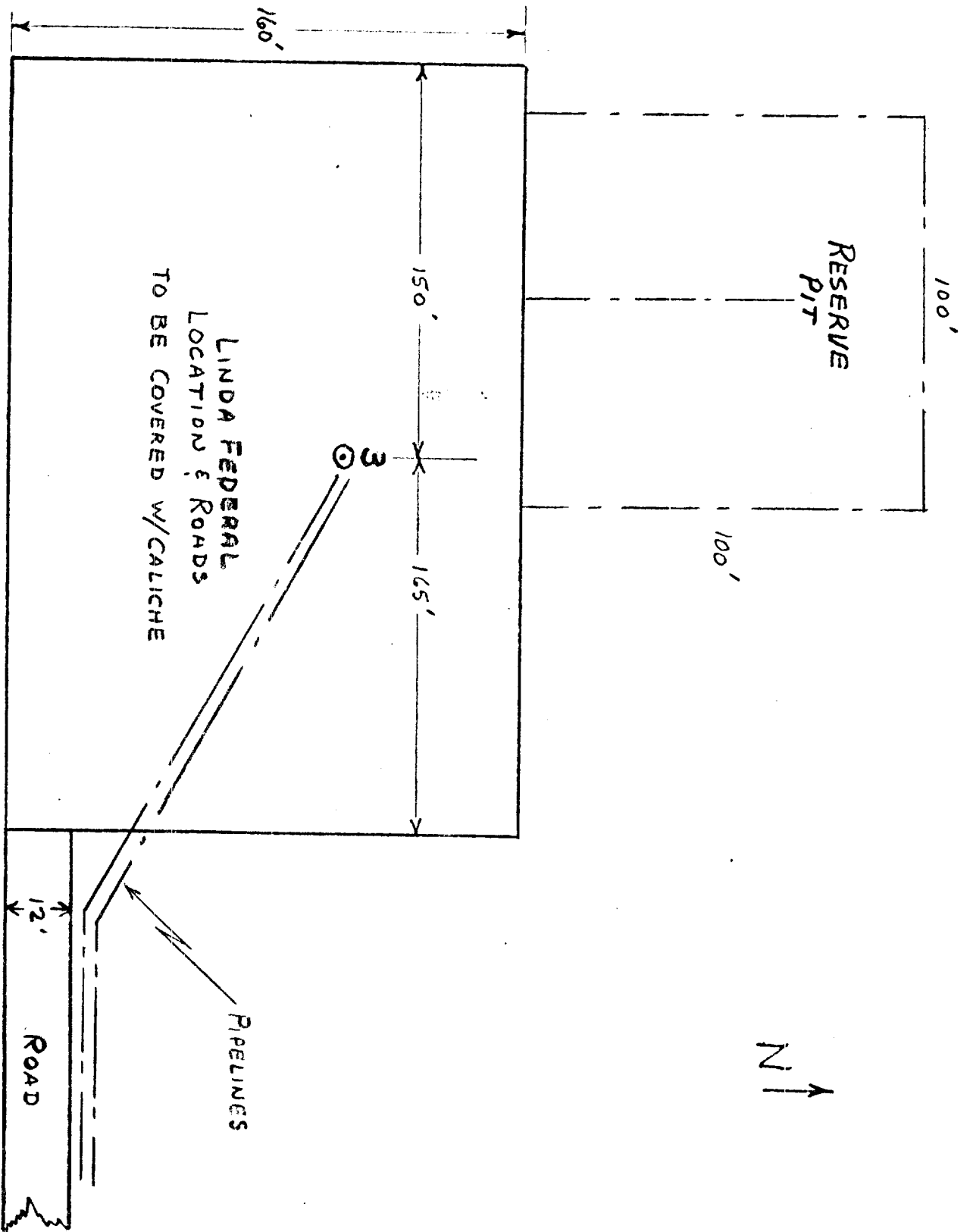




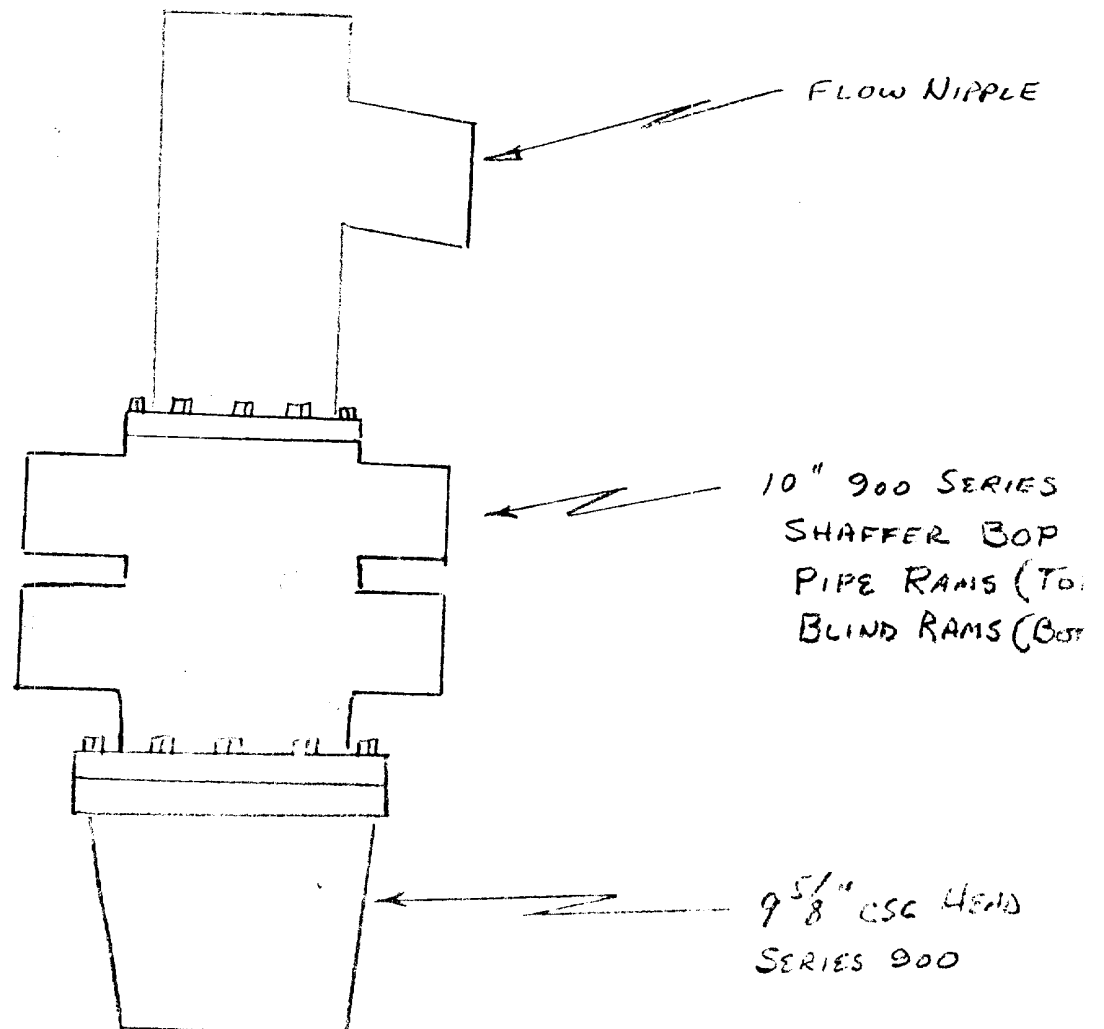
ADORE DILCO
LINDA FED. LEASE
LEA CO. NEW MEX.

TUBB STRUCTURE
C.E. 500' SCALE 1" = 4000'

- OIL WELL
- ✱ GAS WELL
- DRY HOLE
- ✱ S.I. WELL



ADOBE OIL & GAS COR
LINDA FEDERAL
LEA CO, N. MEXICO
TOM BROWN INC.
(DRLG. CONTRACTOR)



U. S. Geological Survey

HOBBS DISTRICT

Adobe Oil & Gas Corporation
No. 3 Linda Federal
SW $\frac{1}{4}$ NW $\frac{1}{4}$ 23-20S-38E
Lea County, New Mexico

Above Data Required on Well Sign

CONDITIONS OF APPROVAL

1. Drilling operations authorized are subject to compliance with the attached General Requirements for Drilling Operations on Federal Oil and Gas Leases, dated January 1, 1977.
2. Notify this office (telephone (505) 393-3612) when the well is to be spudded and in sufficient time for a representative to witness all cementing operations. Attached are names and telephone numbers of Geological Survey and Bureau of Land Management personnel who are available for consultation during construction, drilling, completion, and rehabilitation activities.
3. Immediate notice is required of all blowouts, fires, spills, and accidents involving life-threatening injuries or loss of life.
4. Secure prior approval of the District Engineer for variance from the approved drilling program and before commencing plugging operations, plug-back work, casing repair work, corrective cementing operations, or suspending drilling operations indefinitely.
5. Blowout prevention equipment is to be installed, tested, and in working order before drilling below the surface casing and shall be maintained ready for use until drilling operations are completed.
6. Operations must be in compliance with the provisions of the landowner agreement concerning surface disturbance and surface restoration.
7. Minimum required fill of cement behind the 7" casing is to the base of the salt section.