

UNITED STATES  
DEPARTMENT OF THE INTERIOR  
GEOLOGICAL SURVEY

## APPLICATION FOR PERMIT TO DRILL, DEEPEN, OR PLUG BACK

## 1a. TYPE OF WORK

DRILL ☒DEEPEN ☐PLUG BACK ☐

## b. TYPE OF WELL

OIL  
WELL ☒GAS  
WELL ☐

OTHER

SINGLE  
ZONE ☐MULTIPLE  
ZONE ☒

## 2. NAME OF OPERATOR

Adobe Oil &amp; Gas Corporation

## 3. ADDRESS OF OPERATOR

1100 Western United Life Bldg., Midland, Texas 79701

## 4. LOCATION OF WELL (Report location clearly and in accordance with any State requirements.)\*

At surface

At proposed prod. zone 1980 FNL 1980 FWL

## 14. DISTANCE IN MILES AND DIRECTION FROM NEAREST TOWN OR POST OFFICE\*

10 mi. NE Eunice, New Mexico

## 15. DISTANCE FROM PROPOSED\*

LOCATION : NEAREST  
PROPERTY OR LEASE LINE, FT.  
(Also to nearest drlg. unit line, if any)

660'

## 16. NO. OF ACRES IN LEASE

280

17. NO. OF ACRES ASSIGNED  
TO THIS WELL

40

## 18. DISTANCE FROM PROPOSED LOCATION\*

TO NEAREST WELL, DRILLING, COMPLETED,  
OR APPLIED FOR, ON THIS LEASE, FT.

1320'

## 19. PROPOSED DEPTH

7200'

## 20. ROTARY OR CABLE TOOLS

Rotary

## 21. ELEVATIONS (Show whether DF, RT, GR, etc.)

3582 GLM

## 22. APPROX. DATE WORK WILL START\*

December 4, 1977

## 23. PROPOSED CASING AND CEMENTING PROGRAM

| SIZE OF HOLE | SIZE OF CASING | WEIGHT PER FOOT | SETTING DEPTH | QUANTITY OF CEMENT   |
|--------------|----------------|-----------------|---------------|----------------------|
| 20"          | 15"            | Conductor       | 40'           | 6 yds. (to Surface)  |
| 12-1/4"      | 9-5/8"         | 36              | 1650'         | 750 sx. (to Surface) |
| 8-3/4"       | 7"             | 23 & 26         | 7200'         | 780 sx.              |

We propose to set 40' of conductor pipe, drill a 12-1/4" hole to 1650'  $\pm$  (80' Rustler). Run 9-5/8" surface casing & cement to surface. 8-3/4" hole will be drilled to a depth of 7200'  $\pm$  and 7" casing run for the production string. We anticipate a dual completion in the Blinbry oil & gas pool & Warren (Tubb) oil pool.

NMCC approval is required  
for Dual Completion

APPROVAL TO BE OBTAINED  
WHILE DRILLING AND TESTING

IN ABOVE SPACE DESCRIBE PROPOSED PROGRAM: If proposal is to deepen or plug back, give data on present productive zone and proposed new productive zone. If proposal is to drill or deepen directionally, give pertinent data on subsurface locations and measured and true vertical depths. Give blowout preventer program, if any.

24.

SIGNED

TITLE

District Prod. Manager

DATE

11/23/77

(This space for Federal or State office use)

PERMIT NO.

APPROVAL DATE

APPROVED BY

TITLE

CONDITIONS OF APPROVAL, IF ANY:

\*See Instructions On Reverse Side

RECEIVED  
AMENDED  
DEC 5 1977  
ARTHUR R. BROWN  
DISTRICT ENGINEER

MEXICO OIL CONSERVATION COMMISSION  
WELL LOCATION AND ACREAGE DEDICATION PLAT

Form C-102  
Supersedes C-126  
Effective 1-1-65

All distances must be from the outer boundaries of the Section.

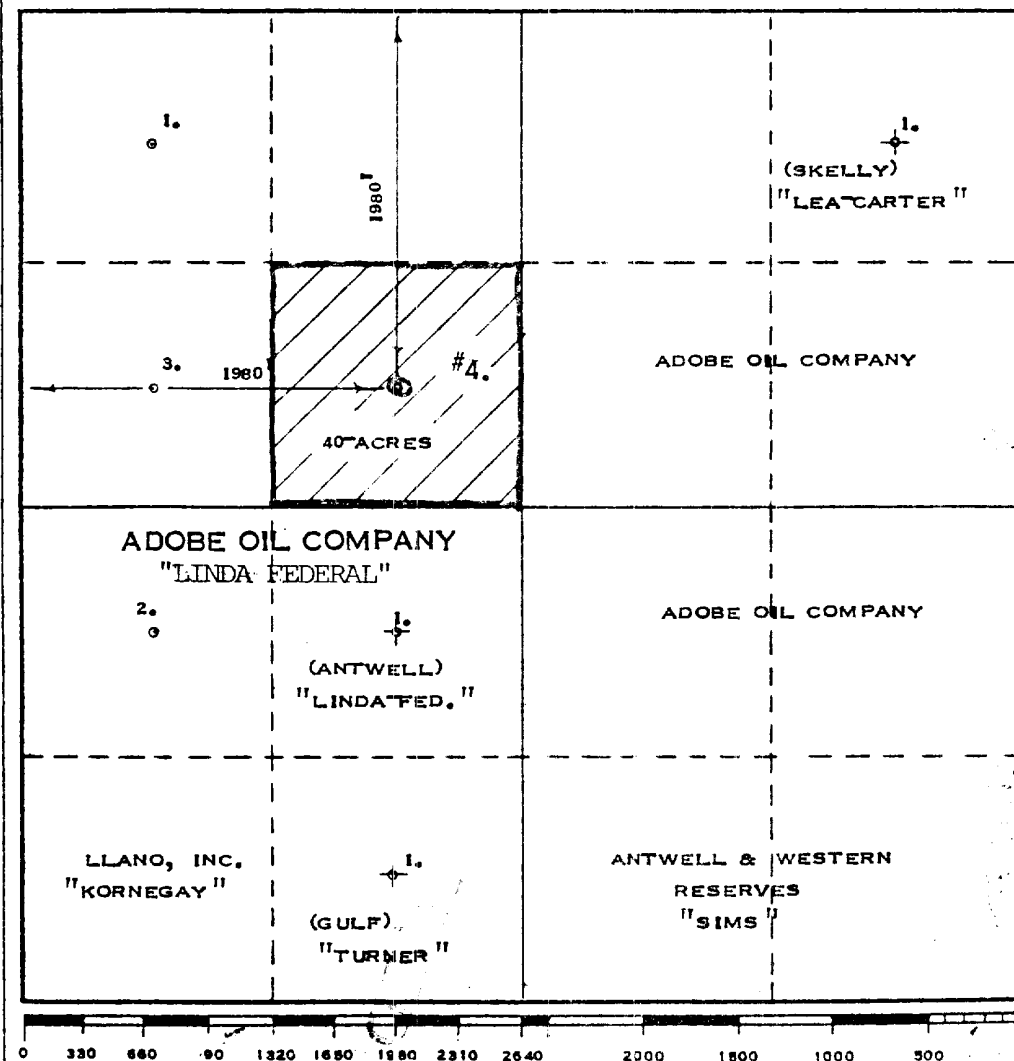
|  |                                    |                           |                                |                                       |                      |
|--|------------------------------------|---------------------------|--------------------------------|---------------------------------------|----------------------|
| Operator<br><b>ADOBE OIL COMPANY</b>   |                                    |                           | Lease<br><b>LINDA FEDERAL</b>  |                                       | Well No.<br><b>4</b> |
| Unit Letter<br><b>"F"</b>  | Section<br><b>23</b>               | Township<br><b>20 - S</b> | Range<br><b>38 - E</b>         | County<br><b>LEA</b>                  |                      |
| Actual Footage Location of Well:<br><b>1980</b> feet from the <b>NORTH</b> line and <b>1980</b> feet from the <b>WEST</b> line |                                    |                           |                                |                                       |                      |
| Ground Level Elev.<br><b>3582</b>  | Producing Formation<br><b>DUAL</b> |                           | Pool<br><b>BLINEBRY - TUBB</b> | Dedicated Acreage:<br><b>40</b> Acres |                      |

1. Outline the acreage dedicated to the subject well by colored pencil or hachure marks on the plat below.
2. If more than one lease is dedicated to the well, outline each and identify the ownership thereof (both as to working interest and royalty).
3. If more than one lease of different ownership is dedicated to the well, have the interests of all owners been consolidated by communitization, unitization, force-pooling, etc?

☐ Yes ☐ No If answer is "yes," type of consolidation NA

If answer is "no," list the owners and tract descriptions which have actually been consolidated. (Use reverse side of this form if necessary.) \_\_\_\_\_

No allowable will be assigned to the well until all interests have been consolidated (by communitization, unitization, forced-pooling, or otherwise) or until a non-standard unit, eliminating such interests, has been approved by the Commission.



**CERTIFICATION**

I hereby certify that the information contained herein is true and complete to the best of my knowledge and belief.

Name Curt B. P.  
Position Dist. Prod. Mgr.  
Company Adobe Oil Company  
Date Nov. 16, 1977

I hereby certify that the well location shown on this plat was plotted from field notes of actual surveys made by me or under my supervision, and that the same is true and correct to the best of my knowledge and belief.

Date Surveyed NOVEMBER 15, 1977  
Registered Professional Engineer and Oil and Gas Surveyor  
MAX A. SCHUMANN JR.  
Certificate No. 1510

# ADOBE OIL & GAS CORPORATION

1100 WESTERN UNITED LIFE BLDG  
MIDLAND, TEXAS 79701  
915 683-4701

SUBSIDIARIES  
ADOBE CORPORATION  
ADOBE OIL COMPANY  
ADOBE INVESTMENT CORPORATION  
ADOBE ROYALTY INC.  
ADOBE INTERNATIONAL, INC.  
ADOBE MARKETING CORPORATION  
ADOBE HOLLAND, INC.  
TELEX 743413

November 23, 1977

LINDA FEDERAL #4

Adobe Oil & Gas Corporation

1980' FWL & 1980' FNL of Section 23, T-20-S, R-38-E, Lea Co., NM

COMPLIANCE W/ NTL-6

1. Surface formation is tertiary w/blow sand cover.
2. Formation tops:
  - Rustler 1580' (anhydrite)
  - Yates 2850'
  - San Andres 4230'
  - Glorieta 5520'
  - Blinebry 5990'
  - Tubb 6550'
  - T.D. 7200'+
3. As above.
4. 15" conductor will be set @ 40' & cemented to surface. 9-5/8" 36# K-55 ST&C new csg will be set @ 1650'+ & cemented to surface. 7" 23 & 26# K-55 ST&C new csg will be set @ 7200'+.
5. Double gate preventor with blind & pipe rams will be used w/3000# pressure rating. We plan to nipple up BOP & test to 1000# prior to drilling plug in surface csg @ 1650'. Preventors will be tested daily during operations.
6. 9.6#/gal salt mud will be used as drilling fluid.
7. No abnormal pressures or lost circulation zones are present in this area; therefore, a minimum of auxillary equipment will be necessary. A full opening valve will be available on floor to be stabbed into DP when Kelly is not in the string.
8. No testing or coring will be done prior to setting csg. Logs will be run from T.D. to surface casing @ 1650'+. The log suite will include Gr-Sonic w/caliper and Dual Laterolog.
9. No abnormal pressure or temperature will be encountered.
10. Hydrogen sulfide is not present. Wellhead equipment will be designed for 3000# maximum pressure (series 900). Anticipated starting date will be December 4, 1977, or as soon as approval is obtained from U.S.G.S.

RECEIVED

APR 11 1966

U.S. CONSTITUTION COMMISSION  
BOSTON, MASS.

## ADOBE OIL & GAS CORPORATION

1100 WESTERN UNITED LIFE BLDG.  
MIDLAND, TEXAS 79701  
915 683-4701

SUBSIDIARIES  
ADOBE CORPORATION  
ADOBE OIL COMPANY  
ADOBE INVESTMENT CORPORATION  
ADOBE ROYALTY INC.  
ADOBE INTERNATIONAL, INC.  
ADOBE MARKETING CORPORATION  
ADOBE HOLLAND, INC.  
TELEX 743413

November 23, 1977

### SURFACE USE AND OPERATIONS PLAN

OPERATOR: Adobe Oil Company  
WELL NAME: Linda Federal #4  
LOCATION: 1980' FWL & 1980' FNL of Section 23, T-20-S, T-38-E  
COUNTY & STATE: Lea Co., New Mexico

#### I. Existing Roads:

Existing lease road to the Linda Federal #1 well will be used. This road exits from Highway 18, approximately 10 miles north of Eunice, New Mexico.

See attached map (1)

#### II. Planned Access Roads:

A road will be constructed from the northeast corner of the location of the Linda Federal well #1 approximately 1200 ft north to the south-east corner of the location.

See attached map (1)

#### III. Location of Existing Wells:

Existing wells in the area are operated by Adobe Oil Company.  
SEE ATTACHED MAP

#### IV. Location of Tank Batteries, Production Facilities, and Production, Gathering and Service Lines:

SEE ATTACHED MAP

The well will be tied into the existing battery at the Linda Federal #1 well. Pipelines will be laid to the east side of the road along the R.O.W.

#### V. Location and Type of Water Supply (Rivers, Creeks, Lakes, Ponds, and Wells):

Water will be trucked to location from Eunice, NM approximately 10 miles SW of the location. There is no water available in the immediate proximity of the well.

#### VI. Source of Construction Materials:

Caliche will be hauled from Mr. Earl Kornegay's pit located in Section 22, T-20-S, R-38-E, Lea Co., NM. This pit is approximately 1-1/4 mile from the location by road.

#### VII. Methods for Handling Waste Disposal:

Burn pits adequately deep will be used for ordinary combustible trash. Enclosed and protected sumps will be used for oil and other toxic wastes,

RECEIVED

1961

OIL CONCENTRATION COMM.  
RECEIVED, N. M.

if necessary. Burning will be kept to a minimum and non-combustibles will be buried below plow depths.

VIII. Ancillary Facilities:

No camp or airstrip will be constructed.

IX. Well Site Layout:

It will be necessary to construct 1200 ft of road & location, as per attached plat, & surface both w/caliche.  
SEE ATTACHED PLAT.

X. Plans for Restoration of the Surface:

Upon completion of the well, pits will remain fenced until they can be cleaned up. Pits will be filled and the location restored to original contours as per agreement with Mr. E. Kornegay, surface owner. All non-combustible trash will be buried.

XI. Other Information:

Topography - Flat, gentle slope to west beyond location.

Blow sand with scrub oak & native grasses

Surface Lease - Mr. E. Kornegay

No dwellings, water, or historical sites are on or near proposed location.

XII. Lessee's or Operator's Representative:

Name: Bob Ritchie

Address: 1612 Hodges Street, Midland, Texas 79701

Phone: 915/683-3925 (home) 915/683-4701 (office)

Carl Bond 915/683-7859 (home) 915/683-4701 (office)

Red Rogers 915/694-1371 (home) 915/683-4701 (office)

XIII. Certification:

I hereby certify that I, or persons under my direct supervision have inspected the proposed drillsite and access route; that I am familiar with the conditions which presently exist; that the statements made in this plan are, to the best of my knowledge, true and correct; and, that the work associated with the operations proposed herein will be performed by Adobe Oil Company and its contractors and subcontractors in conformity with this plan and the terms and conditions under which it is approved.

Date

11-22-77

Name and Title

Carl Bond

Dist. Prod. Mgr.

Hwy 18

T 20 S R 38 E

23

LINDA FED.

#1

EXISTING BATTERY

EXISTING ROADS  
12' WIDE

TURNOUTS

16' CATTLEGUARD

EUNICE, N. MEX.

10 MI.

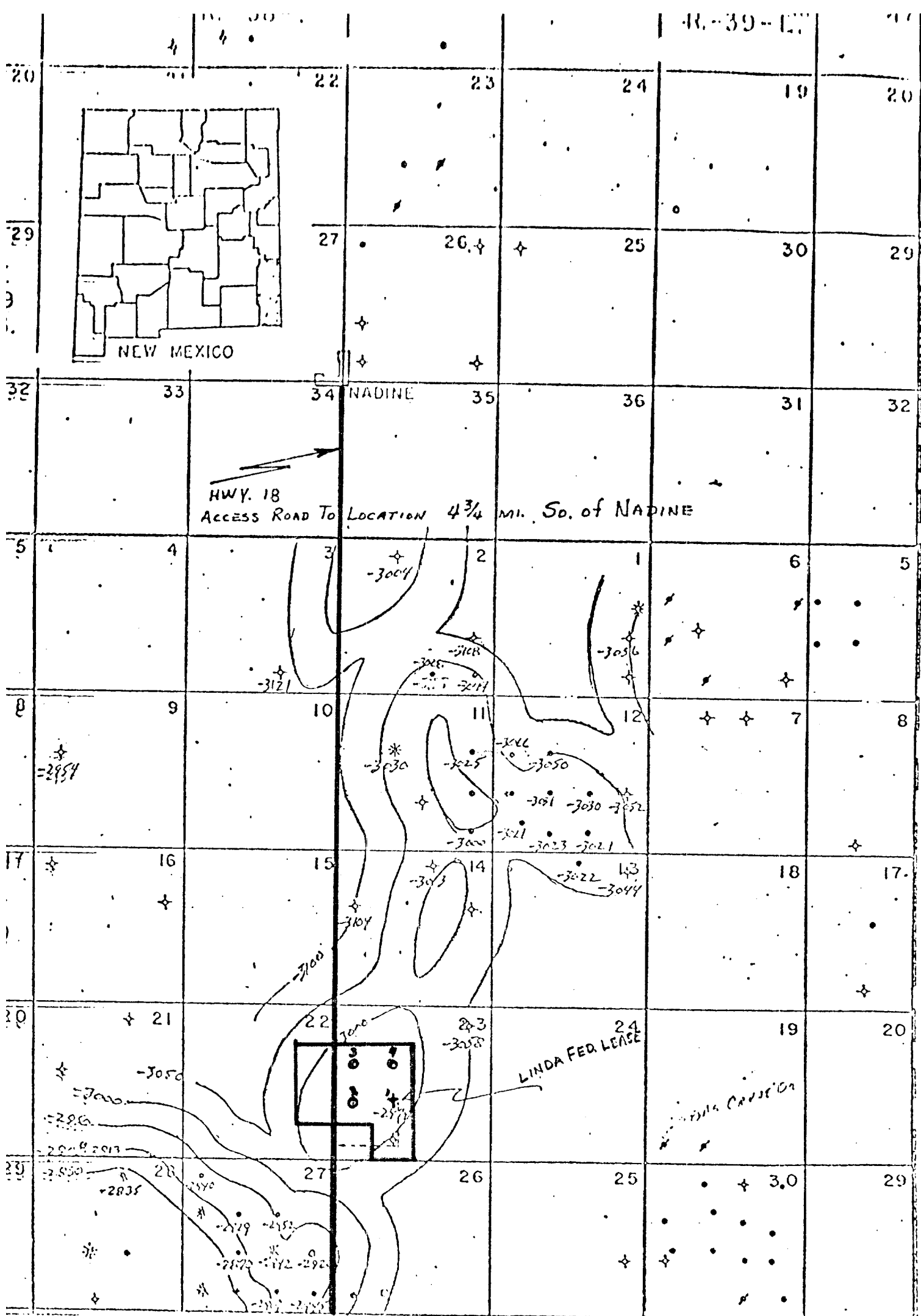
EXISTING ROADS

PROPOSED ROADS

PROPOSED PIPELINES

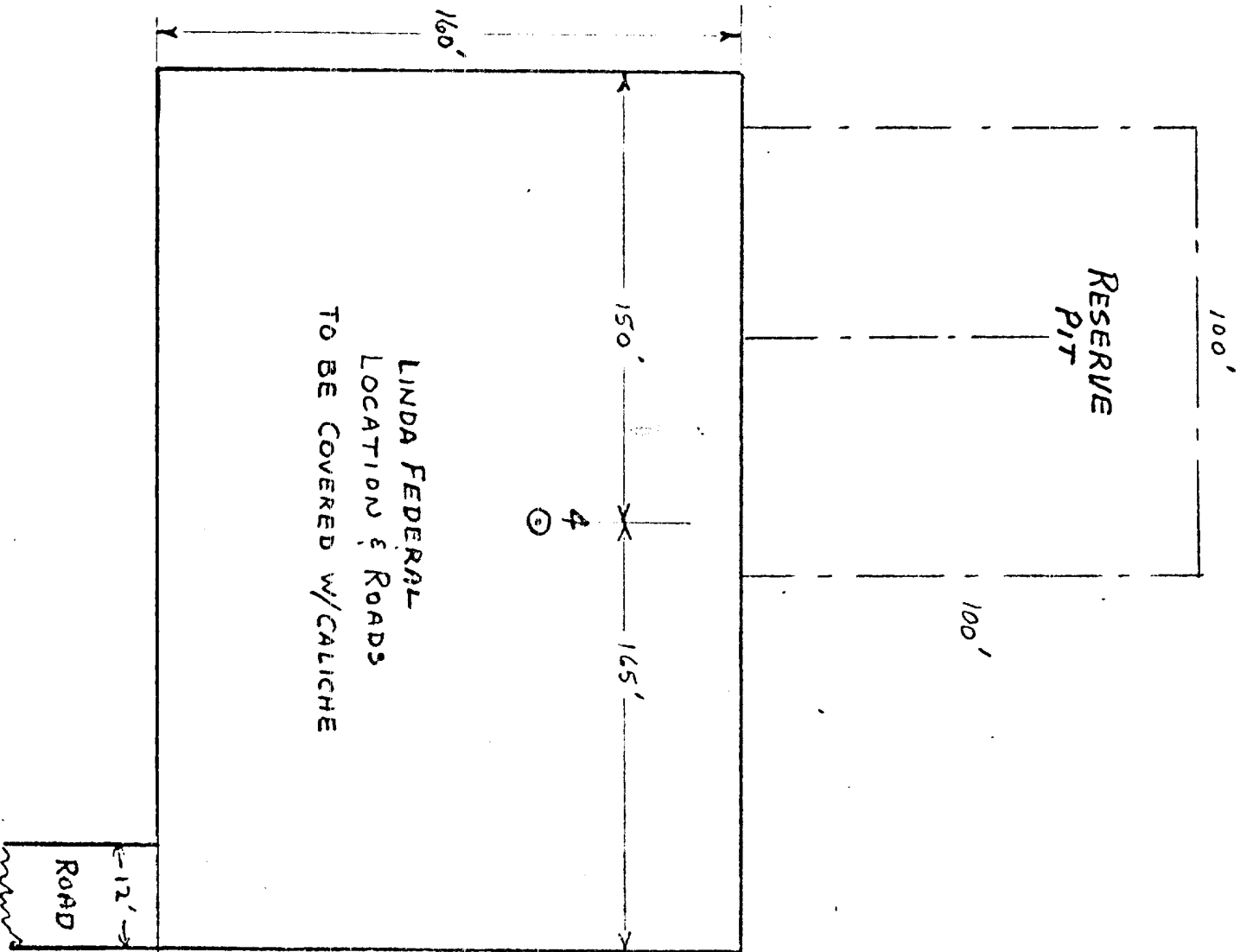
①



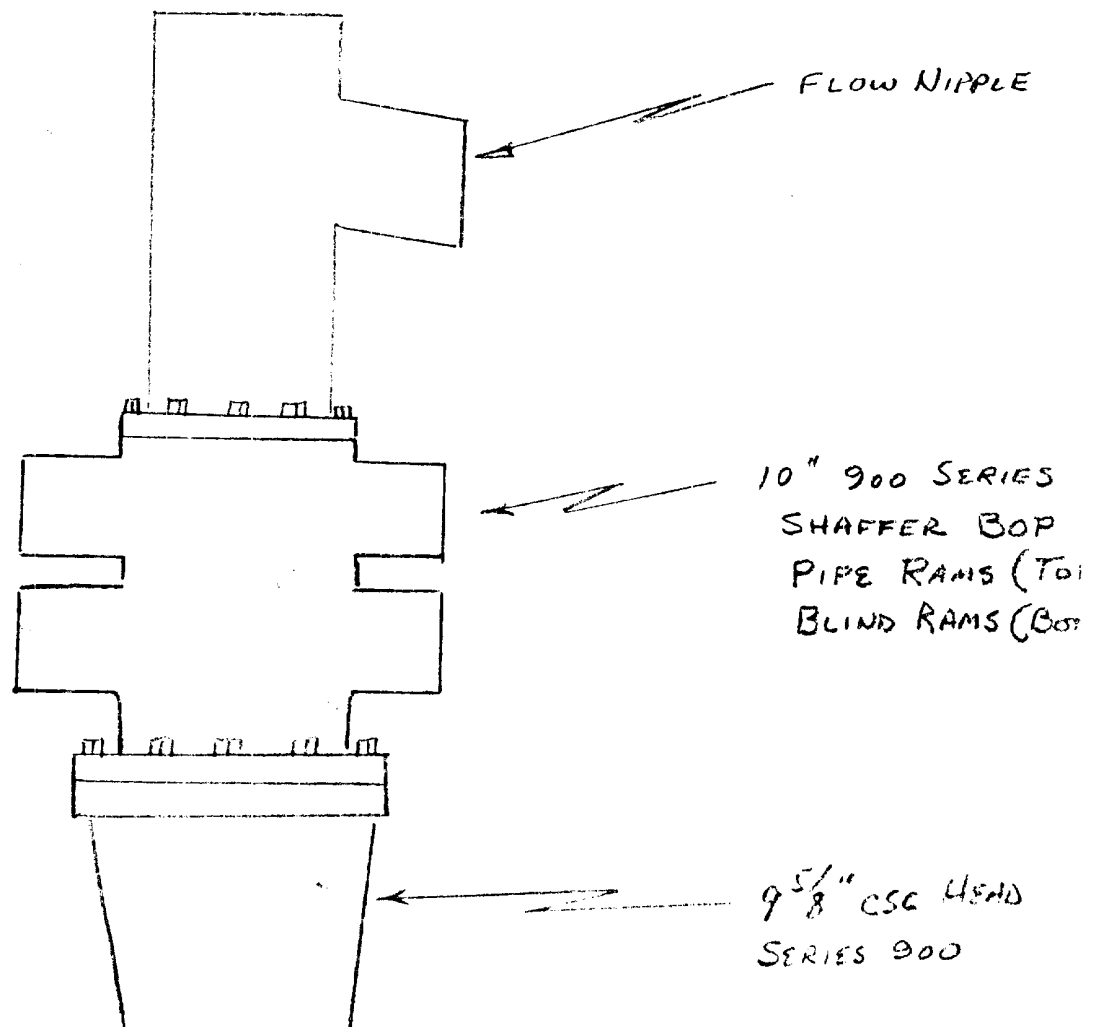


ADORE OIL CO  
 LINDA FED. LEASE  
 LEA CO. NEW MEX.

TUBB STRUCTURE  
 C.T. 50' SCALE 1" = 400'



ADOBE OIL & GAS COR  
LINDA FEDERAL  
LEA CO, N. MEXICO  
TOM BROWN INC.  
(DRLG. CONTRACTOR)



RECEIVED

OIL CONSERVATION COMM.  
HARRIS, N. W.

U. S. Geological Survey

HOBBS DISTRICT

Adobe Oil & Gas Corporation  
No. 4 Linda Federal  
SE $\frac{1}{4}$ NW $\frac{1}{4}$  23-20S-38E  
Lea County, New Mexico

Above Data Required on Well Sign

CONDITIONS OF APPROVAL

1. Drilling operations authorized are subject to compliance with the attached General Requirements for Drilling Operations on Federal Oil and Gas Leases, dated January 1, 1977.
2. Notify this office (telephone (505) 393-3612) when the well is to be spudded and in sufficient time for a representative to witness all cementing operations. Attached are names and telephone numbers of Geological Survey and Bureau of Land Management personnel who are available for consultation during construction, drilling, completion, and rehabilitation activities.
3. Immediate notice is required of all blowouts, fires, spills, and accidents involving life-threatening injuries or loss of life.
4. Secure prior approval of the District Engineer for variance from the approved drilling program and before commencing plugging operations, plug-back work, casing repair work, corrective cementing operations, or suspending drilling operations indefinitely.
5. Blowout prevention equipment is to be installed, tested, and in working order before drilling below the surface casing and shall be maintained ready for use until drilling operations are completed.
6. Operations must be in compliance with the provisions of the landowner agreement concerning surface disturbance and surface restoration.
7. Minimum required fill of cement behind the 7" casing is to the base of the salt section.

RECEIVED

1971  
U.S. CONSERVATION COMM.  
FEB 12 1971