

**UNITED STATES  
DEPARTMENT OF THE INTERIOR  
GEOLOGICAL SURVEY**

SUBMIT IN TRIPPLICATE  
(Other instructions  
reverse side)

Form approved,  
Budget Bureau No. 42-11425.

**APPLICATION FOR PERMIT TO DRILL, DEEPEN, OR PLUG BACK**

1. TYPE OF WORK  
 DRILL ☒ DEEPEN ☐ PLUG BACK ☐

2. TYPE OF WELL  
 OIL WELL ☒ GAS WELL ☐ OTHER ☐ SINGLE ZONE ☐ MULTIPLE ZONE ☒

3. NAME OF OPERATOR  
 Adobe Oil & Gas Corporation

4. ADDRESS OF OPERATOR  
 1100 Western United Life Bldg., Midland, TX 79701

5. LOCATION OF WELL (Report location clearly and in accordance with any State requirements.)  
 At surface 660 FSL & 723 FWL

At proposed prod. zone

6. DISTANCE IN MILES AND DIRECTION FROM NEAREST TOWN OR POST OFFICE\*  
 10 miles NW Eunice, NM

7. DISTANCE FROM PROPOSED\* LOCATION TO NEAREST PROPERTY OR LEASE LINE, FT.  
 (Also to nearest drilg. unit line, if any) 660'

8. DISTANCE FROM PROPOSED LOCATION\* TO NEAREST WELL, DRILLING, COMPLETED, OR APPLIED FOR, ON THIS LEASE, FT. 1320'

9. ELEVATIONS (Show whether DF, RT, GR, etc.)  
 3562.5 GLM

**PROPOSED CASING AND CEMENTING PROGRAM**

SIZE OF HOLE	SIZE OF CASING	WEIGHT PER FOOT	SETTING DEPTH	QUANTITY OF CEMENT
20"	15"	conductor	40'	6 yds (to surface)
12-1/4"	9-5/8"	36#	1650'	750 sx (to surface)
8-3/4"	7"	23 & 26	7100'	780 sx

APPROVAL TO FLARE  
WHILE DRILLING AND

We propose to set 40' of conductor pipe, drill a 12-1/4" hole to 1650'+ (80' Rustler). Run 9-5/8" surface casing & cement to surface. 8-3/4" hole will be drilled to a depth of 7100'+ and 7" casing run for the production string. We anticipate a dual completion in the Blinebry oil & gas pool & the Warren (Tubb) oil pool.

The Llano Federal #1 well was P&A 2/25/78 due to excessive deviation. This is to be the replacement well & is located 63' east of the No. 1 well.

IN ABOVE SPACE DESCRIBE PROPOSED PROGRAM: If proposal is to deepen or plug back, show location of present productive zone and proposed new productive zone. If proposal is to drill or deepen directionally, give pertinent data on subsurface locations and measurements at true vertical depths. Give blowout preventer program, if any.

SIGNED \_\_\_\_\_ TITLE Dist. Prod. Mgr.

DATE 2/28/78

(This space for Federal or State office use)

PERMIT NO. \_\_\_\_\_ APPROVAL DATE \_\_\_\_\_

APPROVED BY \_\_\_\_\_ TITLE \_\_\_\_\_

CONDITIONS OF APPROVAL, IF ANY:

**APPROVED  
AS AMENDED  
FEB 26 1978  
ARTHUR R. BROWN  
DISTRICT ENGINEER**

\*See Instructions On Reverse Side

RECEIVED

MAR 1973

U.S. GOVERNMENT PRINTING OFFICE  
WASH., D. C.

NICO OIL CONSERVATION COMMISSION  
WELL LOCATION AND ACREAGE DEDICATION PLAT

Form C-102  
Supersedes C-120  
Effective 1-1-65

All distances must be from the outer boundaries of the Section.

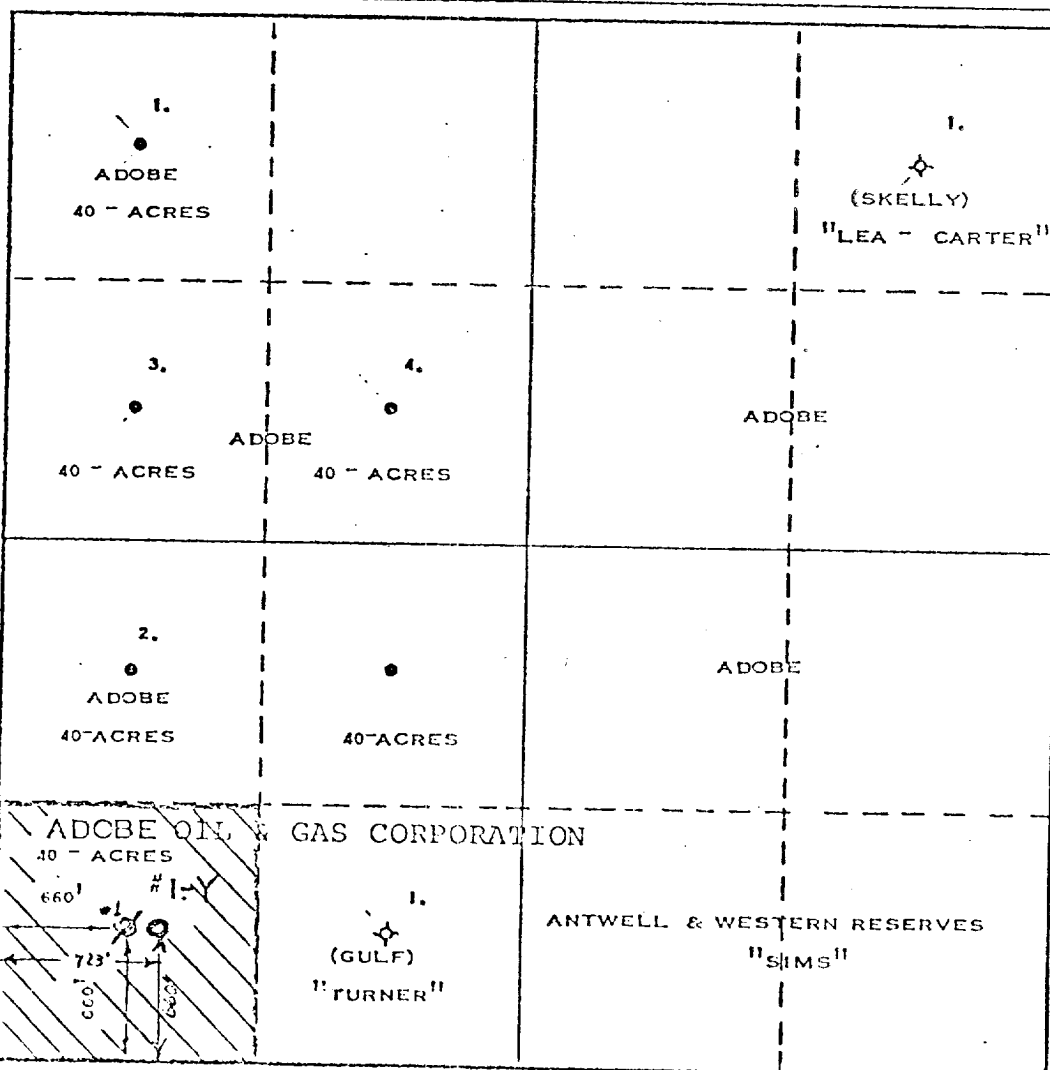
Operator <b>Adobe Oil &amp; Gas Corporation</b>			Lease <b>LLANO FEDERAL</b>		Well No. <b>I-Y</b>
Unit Letter <b>"M"</b>	Section <b>23</b>	Township <b>20-S</b>	Range <b>38-E</b>	County <b>LEA</b>	
Actual Footage Location of Well: <div style="display: flex; justify-content: space-between;"> <span>660 feet from the <b>SOUTH</b> line and</span> <span>723 feet from the <b>WEST</b> line</span> </div>					
Ground Level Elev. <b>3562.5</b>	Producing Formation <b>DUAL</b>	Pool <b>BLINEBRY - TUBB</b>		Dedicated Acreage <b>40</b> Acres	

1. Outline the acreage dedicated to the subject well by colored pencil or ballpoint marks on the plat below.
2. If more than one lease is dedicated to the well, outline each and identify the ownership thereof (both as to working interest and royalty).
3. If more than one lease of different ownership is dedicated to the well, have the interests of all owners been consolidated by communitization, unitization, force-pooling, etc?

☐ Yes    ☒ No    If answer is "yes," type of consolidation \_\_\_\_\_

If answer is "no," list the owners and tract descriptions which have actually been consolidated. (Use reverse side of this form if necessary.) \_\_\_\_\_

No allowable will be assigned to the well until all interests have been consolidated (by communitization, unitization, forced-pooling, or otherwise) or until a non-standard unit, eliminating such interests, has been approved by the Commission.



**CERTIFICATION**

I hereby certify that the information contained herein is true and complete to the best of my knowledge and belief.

Name \_\_\_\_\_  
 Position \_\_\_\_\_  
 Dist. Prod. Mgr.  
 Company \_\_\_\_\_  
 Adobe Oil & Gas Corporation  
 Date \_\_\_\_\_  
 Feb. 28, 1978

I hereby certify that the well location shown on this plat was plotted from field notes of actual surveys made by me or under my supervision, and that the same is true and correct to the best of my knowledge and belief.

Date Surveyed \_\_\_\_\_  
**JANUARY 31, 1978**  
 Registered Professional Engineer and/or Land Surveyor  
 \_\_\_\_\_

RECEIVED

JAN 7 1978

OIL CONSERVATION COMM.  
MOBILE, ALA.

ADOBE OIL & GAS CORPORATION

1100 WESTERN UNITED LIFE BLDG  
MIDLAND, TEXAS 79701  
915 683-4701

SUBSIDIARIES  
ADOBE CORPORATION  
ADOBE OIL COMPANY  
ADOBE INVESTMENT CORPORATION  
ADOBE ROYALTY INC.  
ADOBE INTERNATIONAL, INC.  
ADOBE MARKETING CORPORATION  
ADOBE HOLLAND, INC.  
TELEX 743413

February 28, 1978

Llano Federal #1-Y  
Adobe Oil & Gas Corporation  
660 FSL & 723 FWL of Section 23, T-20-S, R-38-E, Lea Co., NM

COMPLIANCE W/ NTL-6

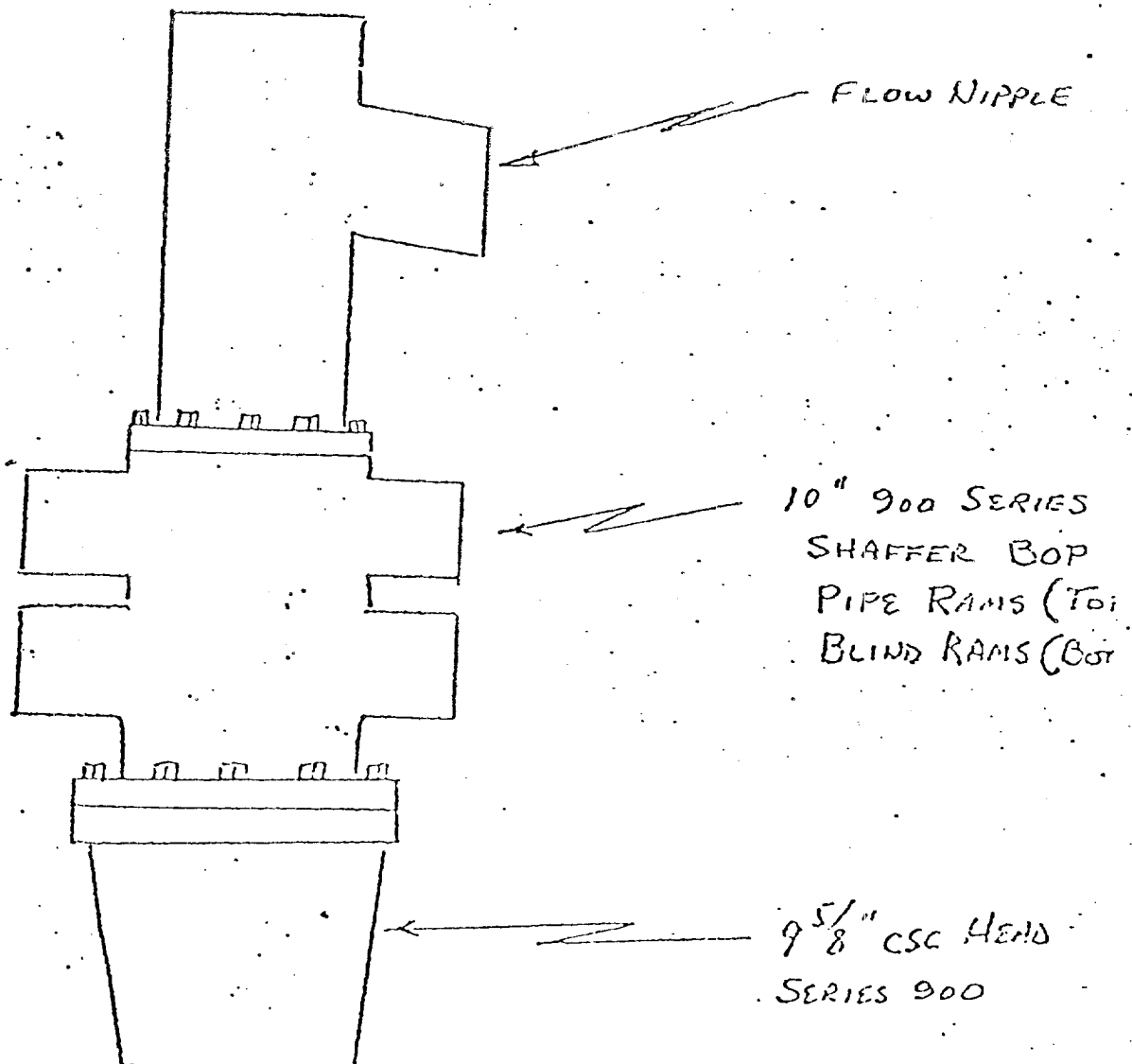
1. Surface formation is tertiary w/blow sand cover.
2. Formation tops:
  - Rustler 1580' (anhydrite)
  - Yates 2850'
  - San Andres 4230'
  - Glorieta 5520'
  - Blinberry 5990'
  - Tubb 6550'
  - T.D. 7100'+
3. As above.
4. 15" conductor will be set @ 40' & cemented to surface. 9-5/8" 36# K-55 ST&C new csg will be set @ 1650'+ & cemented to surface. 7" 35 and 38# K-55 ST&C new csg will be set @ 7100'+.
5. Double gate preventor with blind & pipe rams will be used w/3000# pressure rating. We plan to nipple up BOP & test to 1000# prior to drilling plug in surface csg @ 1650'. Preventors will be tested daily during operations.
6. 10.2#/gal salt mud will be used as drilling fluid.
7. No abnormal pressures or lost circulation zones are present in this area; therefore, a minimum of auxillary equipment will be necessary. A full opening valve will be available on floor to be stabbed into DP when Kelly is not in the string.
8. No testing or coring will be done prior to setting csg. Logs will be run from T.D. to surface casing @ 1650'+. The log suite will include Gr-Sonic w/caliper and Dual Laterolog.
9. No abnormal pressure or temperature will be encountered.
10. Hydrogen sulfide is not present. Wellhead equipment will be designed for 3000# maximum pressure (series 900). Anticipated starting date will be February 26, 1978, or as soon as approval is obtained from U.S.G.S.

RECEIVED

MAR 2 1976

OIL CONSERVATION COMM.  
HOBBS, N. M.

A. JOBE OIL & GAS COR  
LLANO FEDERAL #1-Y  
LEA CO, N. MEXICO  
TOM BROWN INC.  
(DRILLING CONTRACTOR)



RECEIVED

MAR 1978

CIL CONSULTATION COMM.  
HOBBS, N. M.



U. S. Geological Survey

HOBBS DISTRICT

Adobe Oil & Gas Corp.  
No. 1-Y Llano Federal  
SW $\frac{1}{4}$ SW $\frac{1}{4}$  sec. 23-20S-38E  
Lea County, N. M.

Above Data Required on Well Sign

CONDITIONS OF APPROVAL

1. Drilling operations authorized are subject to compliance with the attached General Requirements for Drilling Operations on Federal Oil and Gas Leases, dated January 1, 1977.
2. Notify this office (telephone (505) 393-3612) when the well is to be spudded and in sufficient time for a representative to witness all cementing operations. Attached are names and telephone numbers of Geological Survey and Bureau of Land Management personnel who are available for consultation during construction, drilling, completion, and rehabilitation activities.
3. Immediate notice is required of all blowouts, fires, spills, and accidents involving life-threatening injuries or loss of life.
4. Secure prior approval of the District Engineer for variance from the approved drilling program and before commencing plugging operations, plug-back work, casing repair work, corrective cementing operations, or suspending drilling operations indefinitely.
5. Blowout prevention equipment is to be installed, tested, and in working order before drilling below the surface casing and shall be maintained ready for use until drilling operations are completed.
6. Operations must be in compliance with the provisions of the landowner agreement concerning surface disturbance and surface restoration.
7. Minimum required fill of cement behind the 7" casing is to the base of the salt section.
8. Application for approval to commingle must be made separately to both USGS and NMOCC.

RECEIVED

SEP 27 1978

OIL ON VULCANIZATION COMM.  
HOBBS, N. M.