

| | |
|------------------------|--|
| NO. OF COPIES RECEIVED | |
| DISTRIBUTION | |
| SANTA FE | |
| FILE | |
| U.S.G.S. | |
| LAND OFFICE | |
| OPERATOR | |

NEW MEXICO OIL CONSERVATION COMMISSION

Form C-101
Revised 1-1-65

5A. Indicate Type of Lease

STATE ☐ FEE ☒

5. State Oil & Gas Lease No.

APPLICATION FOR PERMIT TO DRILL, DEEPEN, OR PLUG BACK

| | | | |
|--|--------------------------------|--|----------------------------|
| 1a. Type of Work | | 7. Unit Agreement Name | |
| b. Type of Well OIL WELL <input checked="" type="checkbox"/> GAS WELL <input type="checkbox"/> OTHER <input type="checkbox"/> | | 8. Term or Lease Name Cone "B" | |
| 2. Name of Operator Amoco Production Company | | 9. Well No. 2 | |
| 3. Address of Operator P.O. Drawer A, Levelland, Texas 79336 | | 10. Field and Pool, or Wildcat House Drinkard | |
| 4. Location of Well UNIT LETTER <u>G</u> LOCATED <u>1980</u> FEET FROM THE <u>North</u> LINE AND <u>1980</u> FEET FROM THE <u>East</u> LINE OF SEC. <u>12</u> TWP. <u>20-S</u> RGE. <u>38-E</u> NMPM | | 17. County Lea | |
| 21. Elevations (Show whether DF, RL, etc.) 3568.4 GL | | 19. Proposed Depth 7150 | 19A. Formation Drinkard |
| 21A. Kind & Status Plug. Bond Blanket-On File | 21B. Drilling Contractor NA | 22. Approx. Date Work will start May 15, 1978 | |

23. PROPOSED CASING AND CEMENT PROGRAM

| SIZE OF HOLE | SIZE OF CASING | WEIGHT PER FOOT | SETTING DEPTH | SACKS OF CEMENT | EST. TOP |
|--------------|----------------|-----------------|---------------|-------------------------|----------|
| 12 1/4" | 8 5/8" | 24# | 1600 | Circulate | Surface |
| 7 7/8" | 5 1/2" | 15.5# - 17# | 7150 | Tie back to 8 5/8" csg. | |

Propose to drill and equip Drinkard well. After reaching TD logs will be evaluated, perforate and stimulate as necessary in attempting commercial completion.

Mud program - 0-1600 Native mud and fresh water - brine water thru anhydrite.
1600-7150' - Commercial mud and cut brine water to maintain good hole conditions.

BOP Program attached

IN ABOVE SPACE DESCRIBE PROPOSED PROGRAM; IF PROPOSAL IS TO DEEPEN OR PLUG BACK, GIVE DATA ON PRESENT PRODUCTIVE ZONE AND PROPOSED NEW PRODUCTIVE ZONE. GIVE BLOWOUT PREVENTER PROGRAM, IF ANY.

I hereby certify that the information above is true and complete to the best of my knowledge and belief.

Signed Ray W. Cox Title Administrative Supervisor Date 5-2-78
(This space for State Use)

APPROVED BY [Signature] TITLE SUPERVISOR DISTRICT 1 DATE MAY 1978

CONDITIONS OF APPROVAL, IF ANY:

014-NMOCC - H, 1-Div., 1-Susp., 1-RC

N MEXICO OIL CONSERVATION COMMISS
WELL LOCATION AND ACREAGE DEDICATION PLAT

Form C-102
Supersedes C-128
Effective 1-1-65

All distances must be from the outer boundaries of the Section

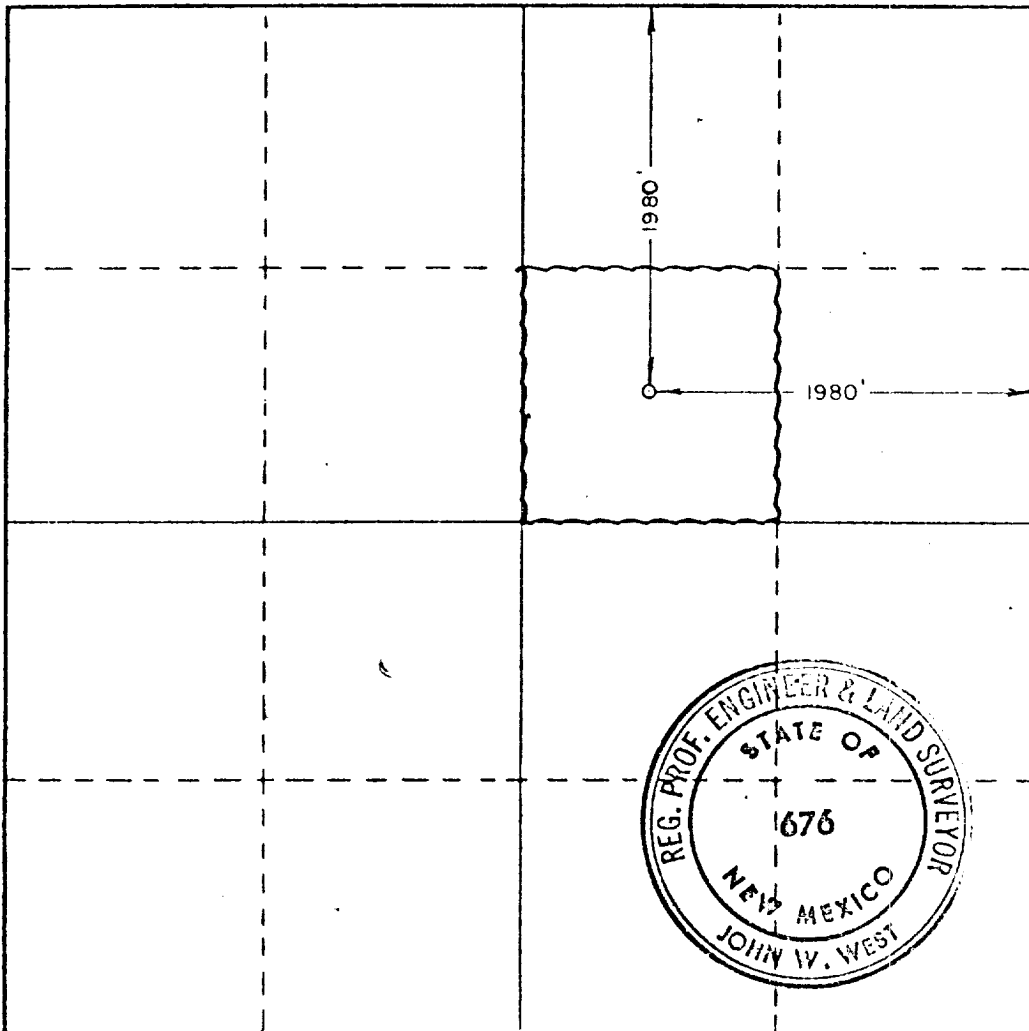
| | | | | | |
|---|--|-----------------------------|-------------------------------|----------------------|---------------------------------------|
| Operator Amoco Production Co. | | | Lease Cone "B" | | Well No. 2 |
| Unit Letter G | Section 12 | Township 20 South | Range 38 East | County Lea | |
| Actual Footage Location of Well: | | | | | |
| 1980 | feet from the | North | line and | 1980 | feet from the East line |
| Ground Level Elev. 3568.4 | Producing Formation DRINKARD | | Pool HOUSE DRINKARD | | Dedicated Acreage: 40 Acres |

1. Outline the acreage dedicated to the subject well by colored pencil or hatchure marks on the plat below.
2. If more than one lease is dedicated to the well, outline each and identify the ownership thereof (both as to working interest and royalty).
3. If more than one lease of different ownership is dedicated to the well, have the interests of all owners been consolidated by communitization, unitization, force-pooling, etc?

☐ Yes ☐ No If answer is "yes," type of consolidation _____

If answer is "no," list the owners and tract descriptions which have actually been consolidated. (Use reverse side of this form if necessary.) _____

No allowable will be assigned to the well until all interests have been consolidated (by communitization, unitization, forced-pooling, or otherwise) or until a non-standard unit, eliminating such interests, has been approved by the Commission.



CERTIFICATION

I hereby certify that the information contained herein is true and complete to the best of my knowledge and belief.

Name Ray W. Cox
Position **Administrative Supervisor**

AMOCO PRODUCTION COMPANY

Date **5-2-78**

I hereby certify that the well location shown on this plat was plotted from field notes of actual surveys made by me or under my supervision, and that the same is true and correct to the best of my knowledge and belief.

Date Surveyed **4/21/78**

Registered Professional Engineer and/or Land Surveyor

John W. West
Certificate No. **John W. West 676**
Ronald J. Eidson 3239

0 330 660 990 1320 1650 1980 2310 2640 2970 3300 3630 3960 4290 4620 4950 5280 5610 5940 6270 6600

1. BLOW-OUT PREVENTERS MAY BE MANUAL OPERATED.
2. ALL EQUIPMENT MUST BE IN GOOD CONDITION, 2,000 PSI W.P. (4,000 PSI TEST) MINIMUM.
3. BELL NIPPLE ABOVE BLOW-OUT PREVENTER SHALL BE SAME SIZE AS CASING BEING DRILLED THROUGH.
4. KELLY COCK TO BE INSTALLED ON KELLY.
5. FULL OPENING SAFETY VALVE 2,000 PSI W.P. (4,000 PSI TEST) MINIMUM, MUST BE AVAILABLE ON RIG FLOOR AT ALL TIMES WITH PROPER CONNECTION OR SUBS TO FIT ANY TOOL JOINT IN STRING.
6. SPOOL OR CROSS MAY BE ELIMINATED IF CONNECTIONS ARE AVAILABLE IN THE LOWER PART OF THE BLOW-OUT PREVENTER BODY.
7. DOUBLE OR SPACE SAVER TYPE PREVENTERS MAY BE USED IN LIEU OF TWO SINGLE PREVENTERS.
8. DOP RAMS TO BE INSTALLED AS FOLLOWS:*

| | | |
|------------------|---|---------------------------|
| TOP PREVENTER | - | DRILL PIPE OR CASING RAMS |
| BOTTOM PREVENTER | - | BLIND RAMS |

*AMOCO AREA SUPT. MAY REVERSE LOCATION OF RAMS.

9. EXTENSIONS AND HAND WHEELS TO BE INSTALLED AND BRACED AT ALL TIMES.
10. MANIFOLD VALVES MAY BE GATE OR PLUG METAL TO METAL SEAL 2" MINIMUM.

