

NEW MEXICO OIL CONSERVATION COMMISSION
WELL LOCATION AND ACREAGE DEDICATION PLAT

Form O-102
Supersedes C-128
Effective 1-1-65

All distances must be from the outer boundaries of the Section

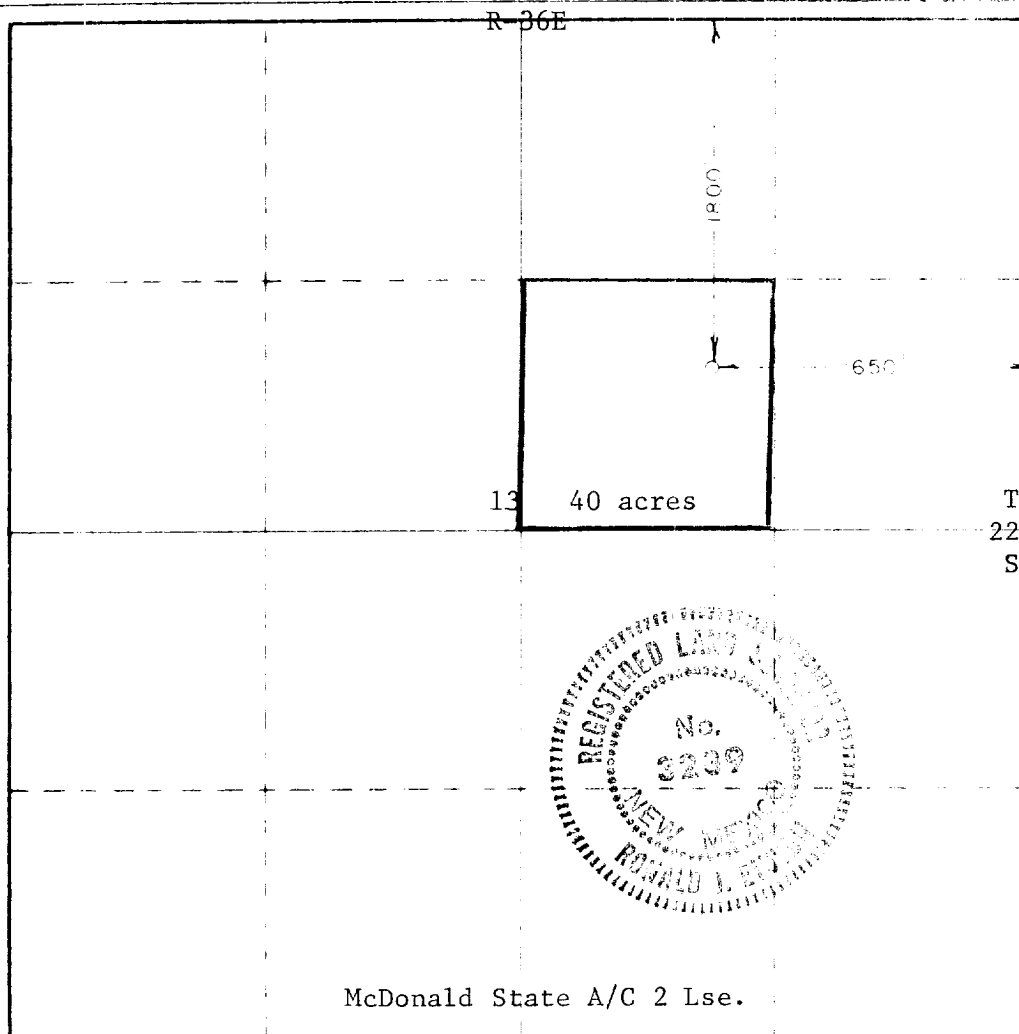
Lessee Marathon Oil Co.		Lease McDonald St. Account 2		Well No. 31
Section G	Section 13	Township 22 South	Range 36 East	County Lea
Acreage Location of Well:				
1800	feet from the	North	line and	1650
				feet from the
				East
Ground Level 3471.2	Producing Formation Drinkard		Estimated Acreage 40	
Acres				

1. Outline the acreage dedicated to the subject well by colored pencil or hatchure marks on the plat below.
2. If more than one lease is dedicated to the well, outline each and identify the ownership thereof (both as to working interest and royalty)
3. If more than one lease of different ownership is dedicated to the well, have the interests of all owners been consolidated by communitization, unitization, force pooling, etc?

☐ Yes ☒ No If answer is "yes" type of consolidation _____

If answer is "no," list the owners and tract descriptions which have actually been consolidated (Use reverse side of this form if necessary.) _____

No allowable will be assigned to the well until all interests have been consolidated (by communitization, unitization, forced-pooling, or otherwise) or until a non-standard unit, eliminating such interests, has been approved by the Commission.



CERTIFICATION

I hereby certify that the information contained herein is true and complete to the best of my knowledge and belief.

By *Wallin R. Huch*

Production Engineer

Marathon Oil Company

May 12, 1978

I hereby certify that the well location shown on this plat was plotted from field notes of actual surveys made by me or under my supervision and that the same is true and correct to the best of my knowledge and belief.

Date Surveyed

5/8/78

Registered Professional Engineer
and Land Surveyor

Ronald J. Eidson

Certificate No. **John W. West 676**
Ronald J. Eidson 3239

