

Submit to Appropriate
District Office
State Lease - 4 copies
Fee Lease - 3 copies

State of New Mexico
Energy, Minerals and Natural Resources Department

Form C-102
Revised 1-1-89

OIL CONSERVATION DIVISION

P.O. Box 2088
Santa Fe, New Mexico 87504-2088

DISTRICT I
P.O. Box 1980, Hobbs, NM 88240

DISTRICT II
P.O. Drawer DD, Artesia, NM 88210

DISTRICT III
1000 Rio Brazos Rd., Aztec, NM 87410

WELL LOCATION AND ACREAGE DEDICATION PLAT

All Distances must be from the outer boundaries of the section

Operator Marathon Oil Company			Lease McDonald State A/C 2		Well No. 32
Unit Letter B	Section 13	Township 22-S	Range 36-E	County NMPM	Lea
Actual Footage Location of Well: 660' feet from the North line and 1650' feet from the East line					
Ground level Elev. 3460'	Producing Formation Blinebry		Pool Blinebry Oil & Gas		Dedicated Acreage: 40 Acres

1. Outline the acreage dedicated to the subject well by colored pencil or hatchure marks on the plat below.

2. If more than one lease is dedicated to the well, outline each and identify the ownership thereof (both as to working interest and royalty).

3. If more than one lease of different ownership is dedicated to the well, have the interest of all owners been consolidated by communitization, unitization, force-pooling, etc.?

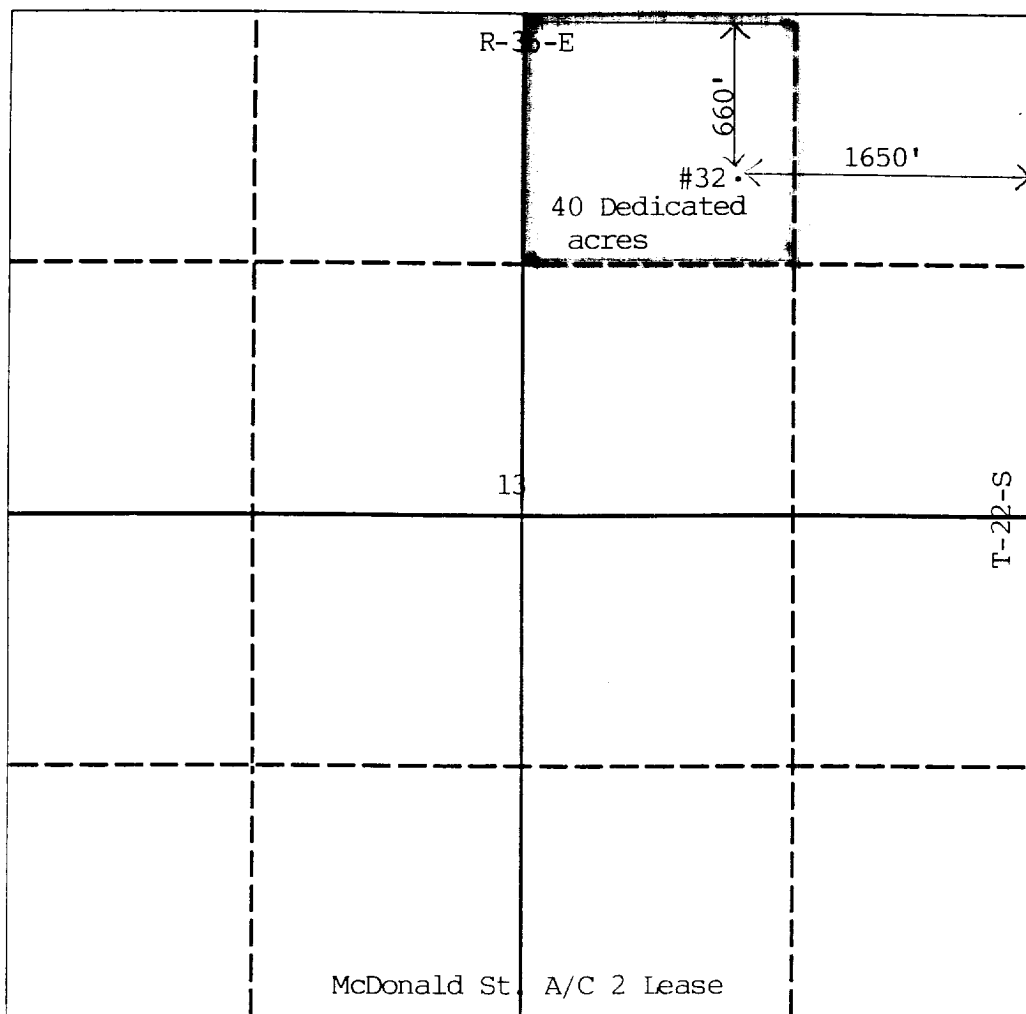
☐ Yes

☐ No

If answer is "yes" type of consolidation

If answer is "no" list the owners and tract descriptions which have actually been consolidated. (Use reverse side of this form if necessary.)

No allowable will be assigned to the well until all interests have been consolidated (by communitization, unitization, forced-pooling, or otherwise) or until a non-standard unit, eliminating such interest, has been approved by the Division.



OPERATOR CERTIFICATION

I hereby certify that the information contained herein in true and complete to the best of my knowledge and belief.

Signature

Carl A. Bagwell

Printed Name

Carl A. Bagwell

Position

Engineering Tech

Company

Marathon Oil Company

Date

7/9/91

SURVEYOR CERTIFICATION

I hereby certify that the well location shown on this plat was plotted from field notes of actual surveys made by me or under my supervision, and that the same is true and correct to the best of my knowledge and belief.

Date Surveyed

Signature & Seal of
Professional Surveyor

Certificate No.

0 330 660 990 1320 1650 1980 2310 2640 2000 1500 1000 500 0

COUNTY LEA FIELD Drinkard STATE NM
OPR MARATHON OIL CO. API 30-025-25933
NO 32 LEASE McDonald State A/C-2 MAP
Sec 13, T22S, R36E COORD 9-1-29 NM
660' FNL, 1650' FEL of Sec SPD 7-15-78 CMP 7-26-78
4 mi SW/Eunice

CSC
8 5/8" at 1310' w/600 sx
5 1/2" at 6750' w/2075 sx

WELL CLASS: INIT D FIN DO ELEV L & S			
FORMATION	DATUM	FORMATION	DATUM
TD 6750' (DRKD)		PBD 6702'	

IP (Drinkard) Perfs 6535-6629' F 168 BOPD + 115 BW.
Pot based on 24 hr test thru 48/64" chk; GOR 2024; gcy
36; CP Pkr; TP 50#

CONTR Tom Brown OPRS ELEV 3471' GL PD 7000' RT

7-18-78 F.R. 5-22-78
7-24-78 (Drinkard)
8-8-78 Drlg 1660'
Drlg 5390'
TD 6750'; PBD 6702'; Tstg
Perf (Drinkard) 6535-6629' (overall)
Acid (6535-6629') 4000 gals (15%)
Flwd 22 BO + 18 BW in 20 hrs thru
20/64" chk, FTP 45# (6535-6629')
8-28-78 TD 6750'; PBD 6702'; Complete
LOG TOPS: Rustler 1180', Salt 1340',
Base Salt 2475', Yates 2686', Seven
Rivers 2900', Queen 3354', Grayburg
3670', San Andres 3910', Glorieta
5143', Blinbry 5480', Tubb 6150',
Drinkard 6516'

9-1-29 NM

LEA
MARATHON OIL CO.

Drinkard
32 McDonald State A/C-2
Sec 13, T22S, R36E

NM
Page #2

8-28-78

Continued
LOGS RUN: CRL, CNL, FDC, CALP, CBND,
CCL

9-2-78

COMPLETION ISSUED

9-1-29 NM
IC 30-025-70171-78