

UNITED STATES  
DEPARTMENT OF THE INTERIOR  
GEOLOGICAL SURVEY

## APPLICATION FOR PERMIT TO DRILL, DEEPEN, OR PLUG BACK

1a. TYPE OF WORK DRILL <input checked="" type="checkbox"/> DEEPEN <input type="checkbox"/> PLUG BACK <input type="checkbox"/>			5. LEASE DESIGNATION AND SERIAL NO. LC 031695(a)		
b. TYPE OF WELL OIL WELL <input checked="" type="checkbox"/> GAS WELL <input type="checkbox"/> OTHER <input type="checkbox"/> SINGLE ZONE <input type="checkbox"/> MULTIPLE ZONE <input checked="" type="checkbox"/>			6. IF INDIAN, ALLOTTEE OR TRIBE NAME		
2. NAME OF OPERATOR Continental Oil Company			7. UNIT AGREEMENT NAME SEMU		
3. ADDRESS OF OPERATOR Box 460, Hobbs, NM			8. FARM OR LEASE NAME SEMU Burger "B"		
4. LOCATION OF WELL (Report location clearly and in accordance with any State requirements.) At surface 1980' FNL + 1650' FWL At proposed prod. zone Same			9. WELL NO. 99		
14. DISTANCE IN MILES AND DIRECTION FROM NEAREST TOWN OR POST OFFICE*			10. FIELD AND POOL, OR WILDCAT Warren + Blinberry		
15. DISTANCE FROM PROPOSED* LOCATION TO NEAREST PROPERTY OR LEASE LINE, FT. (Also to nearest drlg. unit line, if any)			11. SEC., T., R., M., OR BLK. AND SURVEY OR AREA Sec. 29, T-20S, R-38E		
16. NO. OF ACRES IN LEASE			12. COUNTY OR PARISH		
17. NO. OF ACRES ASSIGNED TO THIS WELL			13. STATE		
18. DISTANCE FROM PROPOSED LOCATION* TO NEAREST WELL, DRILLING, COMPLETED, OR APPLIED FOR, ON THIS LEASE, FT.			14. Lea NM		
19. PROPOSED DEPTH 6740'			20. ROTARY OR CABLE TOOLS Rotary		
21. ELEVATIONS (Show whether DF, RT, GR, etc.) 3525 GR			22. APPROX. DATE WORK WILL START* 7-15-78		

## PROPOSED CASING AND CEMENTING PROGRAM

SIZE OF HOLE	SIZE OF CASING	WEIGHT PER FOOT	SETTING DEPTH	QUANTITY OF CEMENT
12 1/4"	9 5/8"	32.3 #	1450'	570 SX circ.
8 3/4"	7"	26# + 23#	6740'	1080 SX DV Tool @ 400

It is proposed to drill a straight hole to a TD of 6740' and complete as a dual oil well in the Tubb and Blinberry zones. See attached for B.O.P. Program, Mud Program, Formation Tops, Logging, etc.

Unless Drilling Operations have commenced, this drilling approval **CONDITIONS OF APPROVAL** expires **OCT 17 1978** WHILE DRILLING AND TESTING.

IN ABOVE SPACE DESCRIBE PROPOSED PROGRAM: If proposal is to deepen or plug back, give data on present productive zone and proposed new productive zone. If proposal is to drill or deepen directionally, give pertinent data on subsurface locations and measured and true vertical depths. Give blowout preventer program, if any.

24. SIGNED Wm A. Butterfield TITLE ADMIN. SURV. DATE 6-21-78

(This space for Federal or State office use)

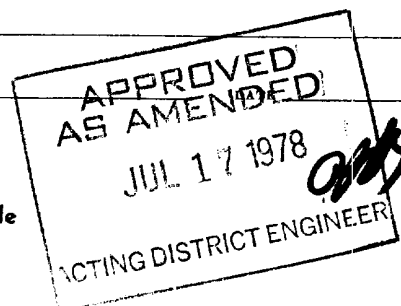
PERMIT NO. \_\_\_\_\_ APPROVAL DATE \_\_\_\_\_

APPROVED BY \_\_\_\_\_ TITLE \_\_\_\_\_

CONDITIONS OF APPROVAL, IF ANY:

\*See Instructions On Reverse Side

USGS (6), NMFU (4), File (2)



RECEIVED

JUL 18 1978

OIL CONSERVATION COMM.  
HOUSTON, N. M.

Attachment to Form 9-331 C  
Application for Permit to Drill

Continental Oil Company, SEMU Burger "B" No. 99  
1980' FNL and 1650' FWL of Section 29, T-20S, R-38E  
Lea County, New Mexico

1. The geologic name of the surface formation is Quaternary Sand.
2. The estimated tops of important geologic markers are shown on the attached Proposed Well Plan.
3. The estimated depths at which anticipated water, oil, gas or other mineral-bearing formations to be encountered are as follows:

Santa Rosa	Approximately 200' water
Rustler	Approximately 1410' anhy.
Salado	Approximately 1480' salt
Yates	Approximately 2680' sandstone
7-Rivers	Approximately 2930'
Queen	Approximately 3510' sandstone
San Andres	Approximately 4050' Dolo.
Glorietta	Approximately 5370' sandstone
Blinberry Mkr. dolo.	Approximately 5860'
Tubb	Approximately 6350' sandstone

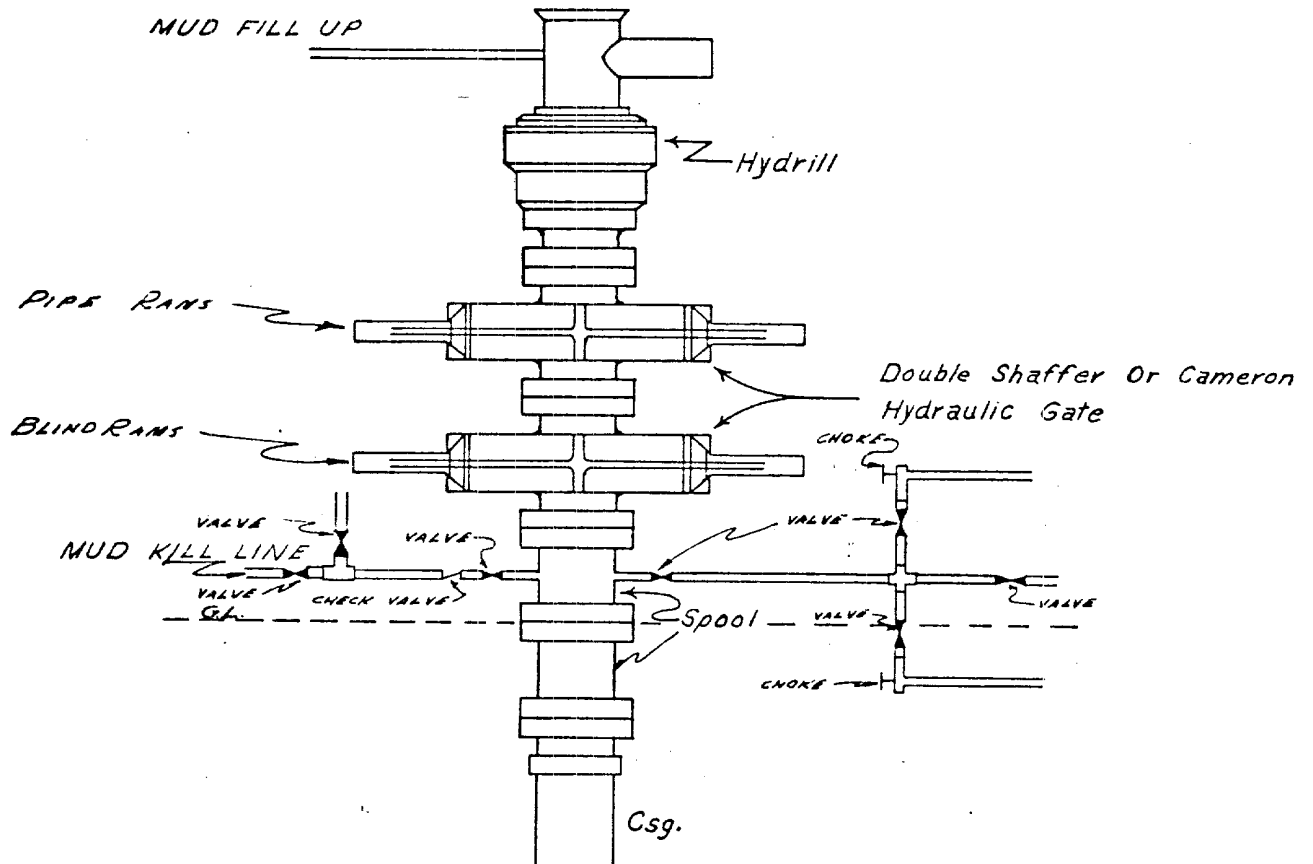
4. The proposed casing program is as follows:

Surface - New 9 5/8" 32.30# K-55 STC set at approximately  
1450'  
Production - New 7" 26# & 23# set at approximately 6740'

5. A drawing of an API Series 900 Blowout Preventer Specification is Attached. Pipe rams and blinds will be checked to 1,000 PSI for 30 minutes when BOP is installed. BOP will be checked when casing string is set and operated daily for checks.
6. The proposed mud program is as follows;

0-1450' spud mud	8.5-9.0 pounds per gallon
1450'-6740' salt gel	10.0-12.0 pounds per gallon
7. The auxiliary equipment to be used is:
  - (1) kelly cocks
  - (2) floats at the bit
8. It is proposed to run GR, CNL, FDC, DLL logs from TD to 2600'.
9. No abnormal pressures or temperatures are expected to be encountered in this well.
10. The anticipated starting date for this well is July 15, 1978, with a duration date of approximately twenty-one days.

CONTINENTAL OIL COMPANY  
Blow-out Preventer Specifications



API Series 900

NOTE:

Manual and Hydraulic controls with closing unit no less than 75' from well head.  
Remote controls on rig floor.

**DUE TO SUBSTRUCTURE CLEARANCE,  
HYDRILL MAY OR MAY NOT BE USED.**

CONTINENTAL OIL CO.

SEMU BURGER "B" # 99

NEW MEXICO OIL CONSERVATION COMMISSION  
WELL LOCATION AND ACREAGE DEDICATION PLAT

Form O-101  
Supersedes O-128  
Effective 1-1-65

All distances must be from the outer boundaries of the Section

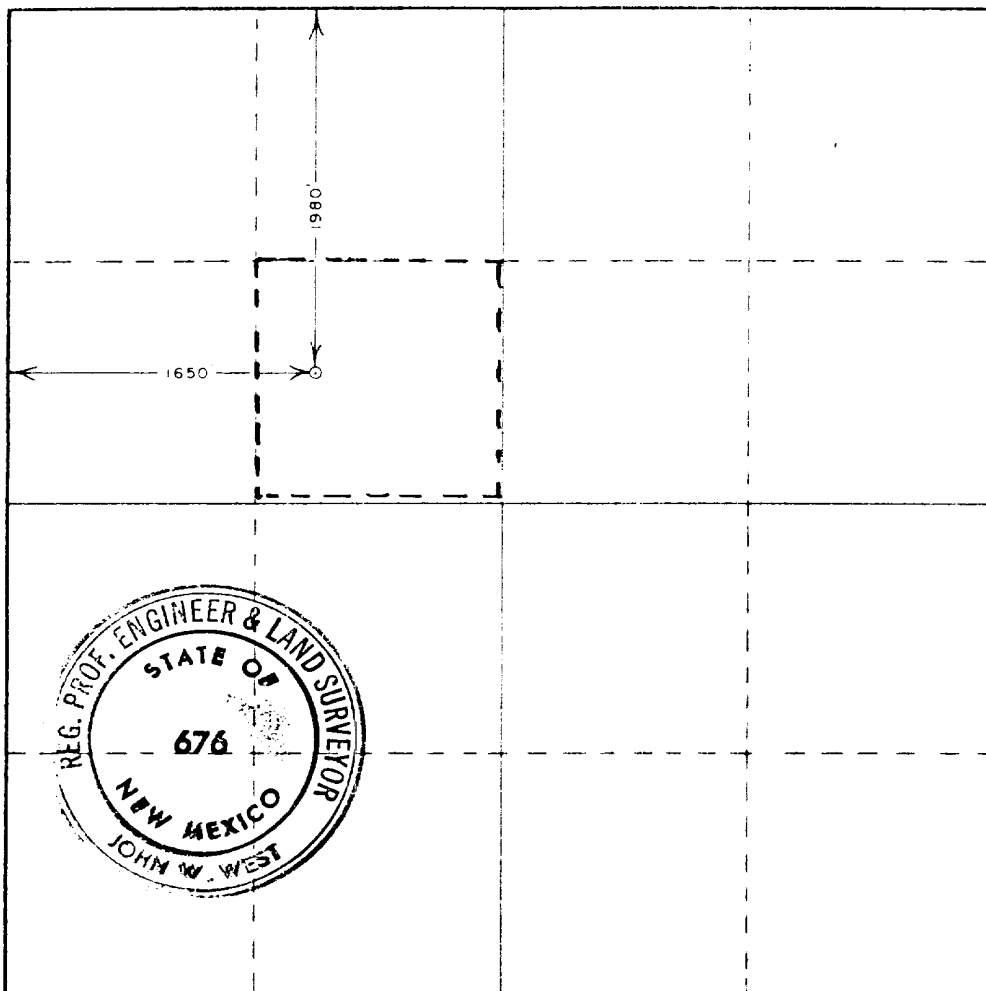
Operator <b>Continental Oil Co.</b>			Lease <b>SEMU Burger "B"</b>		Acres <b>99</b>
Section letter <b>F</b>	Section <b>29</b>	Township <b>20 South</b>	Range <b>38 East</b>	County <b>Lea</b>	
Actual Portage Location of well:					
<b>1980</b> feet from the <b>North</b> line and		<b>1650</b> feet from the <b>West</b> line			
Ground Level Elev. <b>3525.0</b>	Producing Formation <b>Tubb &amp; Blinbry</b>	Pool <b>West Warren Blinbry</b> <b>UNDESIGNATED</b>	Dedicated Acreage <b>40</b> Acres		

1. Outline the acreage dedicated to the subject well by colored pencil or hatchure marks on the plat below.
2. If more than one lease is dedicated to the well, outline each and identify the ownership thereof (both as to working interest and royalty).
3. If more than one lease of different ownership is dedicated to the well, have the interests of all owners been consolidated by communitization, unitization, force-pooling, etc?

☐ Yes ☐ No If answer is "yes," type of consolidation \_\_\_\_\_

If answer is "no," list the owners and tract descriptions which have actually been consolidated. (Use reverse side of this form if necessary.) \_\_\_\_\_

No allowable will be assigned to the well until all interests have been consolidated (by communitization, unitization, forced-pooling, or otherwise) or until a non-standard unit, eliminating such interests, has been approved by the Commission.



CERTIFICATION

I hereby certify that the information contained herein is true and complete to the best of my knowledge and belief.

By *Wm. A. T. Butterfield*  
Position  
**ADMIN. SUPV.**  
Company  
**CONTINENTAL OIL CO.**  
Date  
**JUNE 21, 1978**

I hereby certify that the well location shown on this plat was plotted from field notes of actual surveys made by me or under my supervision, and that the same is true and correct to the best of my knowledge and belief.

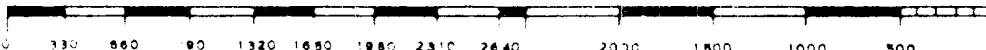
Date Surveyed

**May 30, 1978**

Registered Professional Engineer and/or Land Surveyor

*John W. West*

Certificate No. **John W. West 676**  
**Ronald J. Eidson 3239**



RECEIVED

MAY 18 1978

CH. OF. MATH. COMM.  
WASH. D. C.

Est. 3528 GL

DEPTH	FORMATION TOPS & TYPE Quaternary ss.	DRILLING PROBLEMS	TYPE OF FORMATION EVALUATION	HOLE SIZE (IN)	CASING		FRACTURE GRADIENT (PPG)	FORMATION PRESSURE COEFFICIENT (PPG)	MUD	
					SIZE (IN)	DEPTH (FT)			WEIGHT (PPG)	TYPE
	Water ss.									
1000	Rustler Anhy. Salado Salt	1410 1480		12 1/4"	9 5/8"	1450'			8.5- 9.0	FRESH WATER
2000	Base Salt	2510								
	Yates ss.	2680								
3000	Seven Rivers dol.	2930								
	Queen ss.	3510								
4000	San Andres dol.	4050								
5000	Glorieta ss.	5370								
6000	Bline. Mkr. dol.	5860	GR-CNL-FDC DLL				14.9	LESS THAN 8.5		
	Tubb ss.	6350	TD-2600'					LESS THAN		
	Tubb dol.	6520	2" & 5"					8.5		
7000	Drinkard TD 6740	6670		8 3/4"	7"	6740'	15.1	9.0- 10.0	SALT GEL	

SURFACE USE PLAN  
Continental Oil Company, SEMU Burger "B" No. 99  
1980' FNL and 1650' FWL of Section 29, T-20S, R-38E  
Lea County, New Mexico

This plan is to accompany "Application for Permit to Drill" the subject well which is located approximately eleven miles on a direct line south of Hobbs, New Mexico. The following is a discussion of pertinent information concerning possible effect which the proposed drilling of the well may have on the environment of the well and road sites and surrounding acreage. A copy will be posted on the derrick floor so that all contractors and sub-contractors will be aware of all items of this plan.

1. Existing Roads:

- A. The proposed well site is 1980' FNL and 1650' FWL of Section 29, T-20S, R-38E, Lea County, New Mexico.
- B. Exhibit "A" is a portion of a New Mexico road map showing existing black top roads. Directions to the location (outlined in red on map) from Monument, New Mexico are as follows: from the Stanolind road on the south edge of Hobbs, travel south 9.6 miles on Highway 18 and refer to Exhibit "C" SEMU Burger "B" road map for the well location.

C,D,E. The access roads are shown on Exhibits "B", "C" and "D".

- F. No improvement or maintenance are anticipated for the existing roads.

2. Planned Access Roads:

- A. Width and Length: New road required will be 12 feet wide and various lengths. This new road is labeled on Exhibits "B" and "C". (staked)
- B. Turnouts: None
- C. Drainage Design: New road will have a drop of 6 inches from center line on each side.
- D. Culverts, Cuts and Fills: None
- E. Surfacing Material: Six inches of caliche, bladed, watered and compacted.
- F. Gates, Cattleguards, Fences: No new installations required. Existing fence and cattleguards are shown on Exhibit "D".
- G. The proposed road is staked.



3. Location of Existing Wells:

See Exhibit "D"

4. Location of Existing and/or Proposed Facilities:

- A. Tank Batteries: The existing production header is located in the SW/4 of Section 20 and located on Exhibit "D".
- B. Producing Facilities: No additional producing facilities are required.
- C. Oil Gathering Lines: The flowline will lay (not buried) along the roads as shown on Exhibit "D".
- D. Other Lines: No additional gas gathering, injection or disposal lines will be required.
- E. Rehabilitation: Pits will be backfilled and leveled as soon as practical to original condition. Commencement of rehabilitation operations will immediately follow removal of drilling and completion equipment from location and rehabilitation of the surface is planned to be completed within 45 days from commencement.
- F. Power Lines: See attached map for the power distribution.

5. Water Supply: The water supply will be hauled from Eunice, New Mexico.

6. Source of Construction Materials:

- A. Caliche for surfacing the new road and the well pad will be obtained from an existing pit in the SE/SE Section 15, T-20S, R-38E as shown on Exhibit "D".
- B. Caliche to be purchased from Mr. Earl Kornegay.
- C. The caliche to be hauled from the location of the caliche pit over existing roads to the new roads locations as shown on Exhibits "C" and "D".

7. Methods for Handling Waste Disposal:

Waste Disposal: Well cuttings will be disposed in reserve pit. Barrel trash containers to be in accessible locations within drill site area during drilling and completion procedures. All detrimental waste will be hauled away, burned or buried with a minimum cover of 24" of dirt. See Exhibit "E" for location of pits. If well is productive, maintenance waste will be placed in special trash cans and hauled away periodically. Any produced water will be collected in tanks until hauled to an approved disposal system, or separate disposal applications will be submitted to the survey for appropriate approval.

8. Ancillary Facilities: None

9. Well Site Layout:

Exhibit "E" shows the relative location and dimensions of the well pad, mud pit, reserve pit, trash barrel, etc. The reserve pit will be lined with plastic. The pad and pits are staked.

10. Plans for Restoration of Surface:

Pits will be backfilled and leveled as soon as practical to original condition. Commencement of rehabilitation operations will immediately follow removal of drilling and completion equipment from location and rehabilitation of the surface is planned to be completed within 45 days from commencement.

11. Other Information:

A. Terrain: Low rolling sand hills. See Exhibit "B", topographic map of area.

B. Soil: Sandy

C. Vegetation: Sparse shinnery

D. Surface Use: Grazing

E. Ponds and Streams: None within one mile

F. Water Wells: None within one mile

G. Residences and Buildings: None within one mile

H. Arroyos, Canyons, Etc.: None within one mile

I. Well Sign: Sign identifying and locating well will be maintained at drill site with the spudding of the well.

J. Open Pits: All pits containing mud or other liquids will be fenced.

K. Archaeological Resources: None observed

12. Operator's Representative: Field personnel who can be contacted concerning compliance of this Surface Use Plan are as follows:

Production and Drilling  
D. A. Sowers, W. D. Cates  
E. L. Oshlo or L. P. Thompson  
1001 North Turner  
Hobbs, New Mexico 88240  
Phone: 393-4141

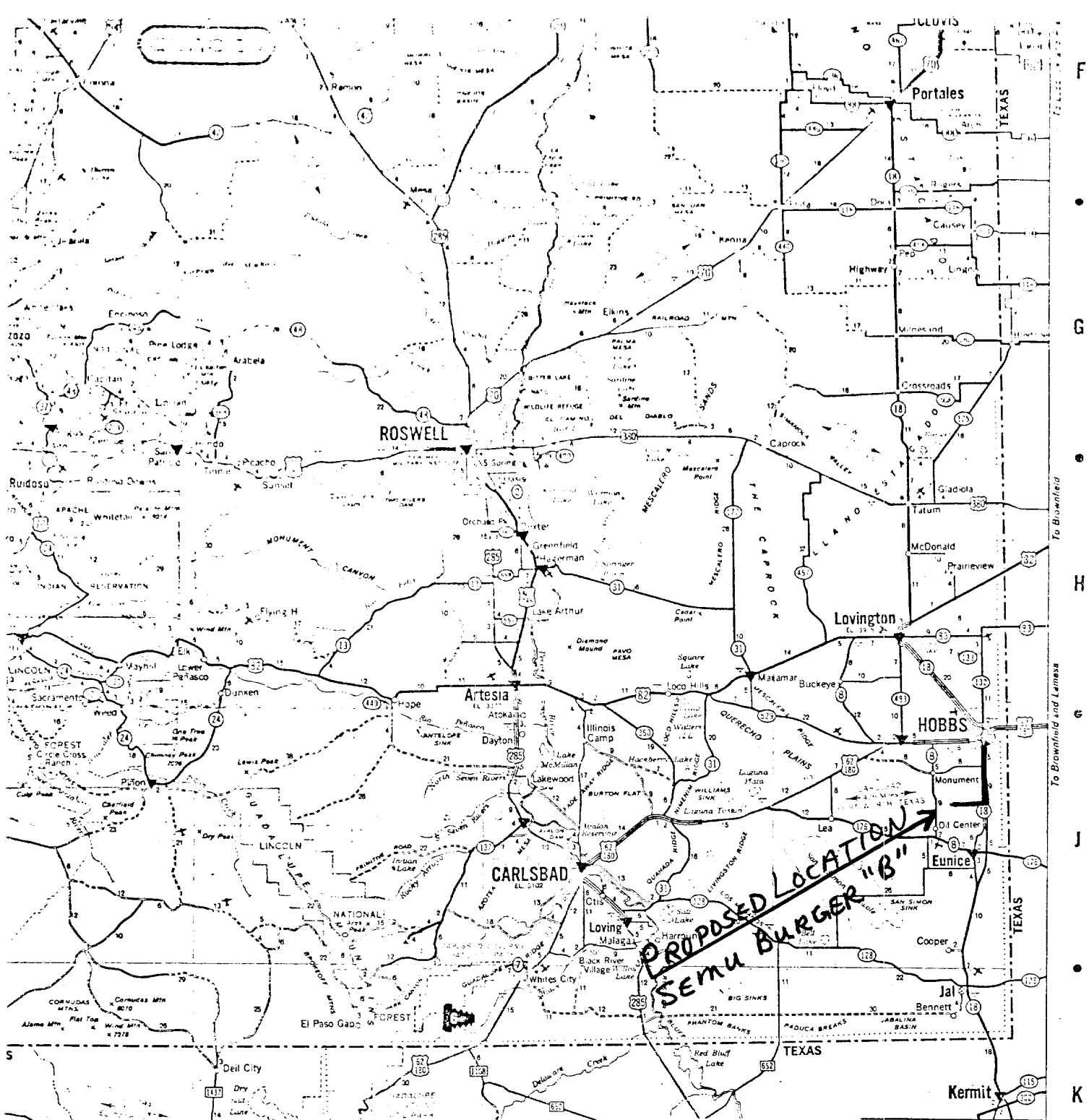
13. Certification: I hereby certify that I, or persons under my direct supervision, have inspected the proposed drill site and access route; that I am familiar with the conditions which presently exist; that the statements made in this plan are, to the best of my knowledge, true and correct; and that the work associated with the operations proposed herein will be performed by Continental Oil Company and its contractors and sub-contractors in conformity with this plan and the terms and conditions under which it is approved.

6-21-75

Date

Dave Lowers

dlt



#### LOCATIONS WHERE CO:

- Locations on Interstate Highways for which the following information is available:
  - Where CO: is located
  - Where CO: is located
- Locations of CO: Travel Shoppers



Locations where CO: DEALERS are located for the following information:
 

- Where CO: is located
- Where CO: is located

Continental Oil Company  
SEMU Burger "B"  
Exhibit "A"



CO:

GENERAL

NEW MEXICO

SCALE OF MILES  
0 5 10 20 30 40  
ONE INCH EQUALS APPROXIMATELY 21.6 MILES

#### HIGHWAY MARKERS

INTERSTATE (M) UNITED STATES (66) STATE (41) TEXAS FARM OR RANCH (528)

#### ROAD CLASSIFICATIONS

CONTROLLED ACCESS DIVIDED HIGHWAYS  
Interstate interchanges are indicated by the following symbols:  
Other Divided Highways  
Principal Through Highways  
Other Through Highways  
Connecting Highways  
LOCAL ROADS in unfamiliar areas inquire locally before using these roads.

#### MILEAGES

MILEAGE BETWEEN TOWNS AND JUNCTIONS 3 1 4 MILEAGE BETWEEN DOTS

#### SPECIAL FEATURES

STATE PARKS  
With Campsites Without Campsites  
RECREATION AREAS  
With Campsites Without Campsites  
PORTS OF ENTRY  
Open 24 Hours Inquire Locally  
POINTS OF INTEREST  
SCHEDULED AIRLINE STOPS  
MILITARY AIRPORTS  
OTHER AIRPORTS  
TOURIST INFORMATION  
SKI AREAS  
SELECTED REST AREAS  
BOAT RAMPS  
TIME ZONE BOUNDARY

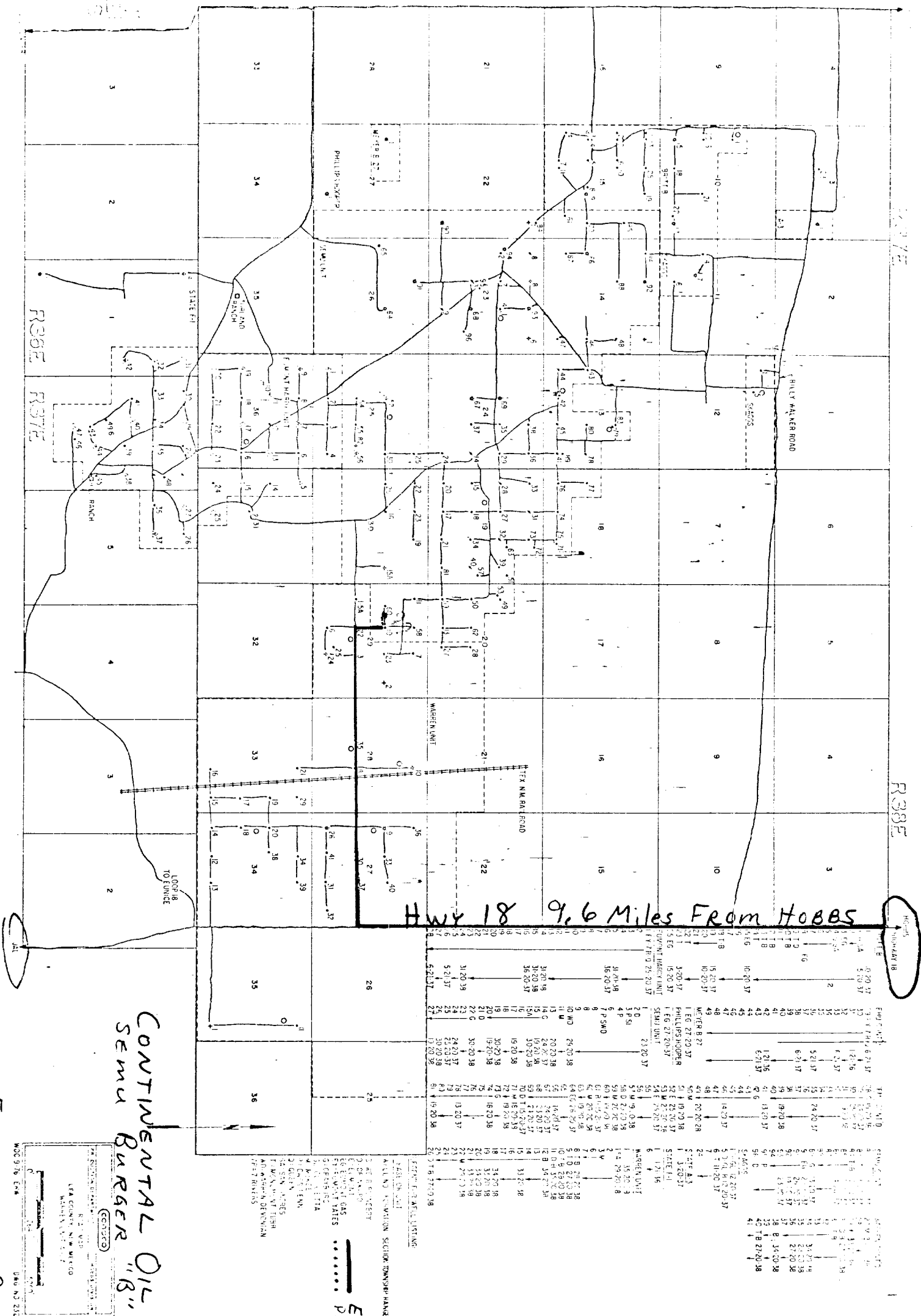
#### POPULATION SYMBOLS

State Capital 2,500 to 5,000 25,000 to 50,000  
Under 1,000 5,000 to 10,000 50,000 to 100,000  
1,000 to 2,500 10,000 to 25,000 100,000 and over

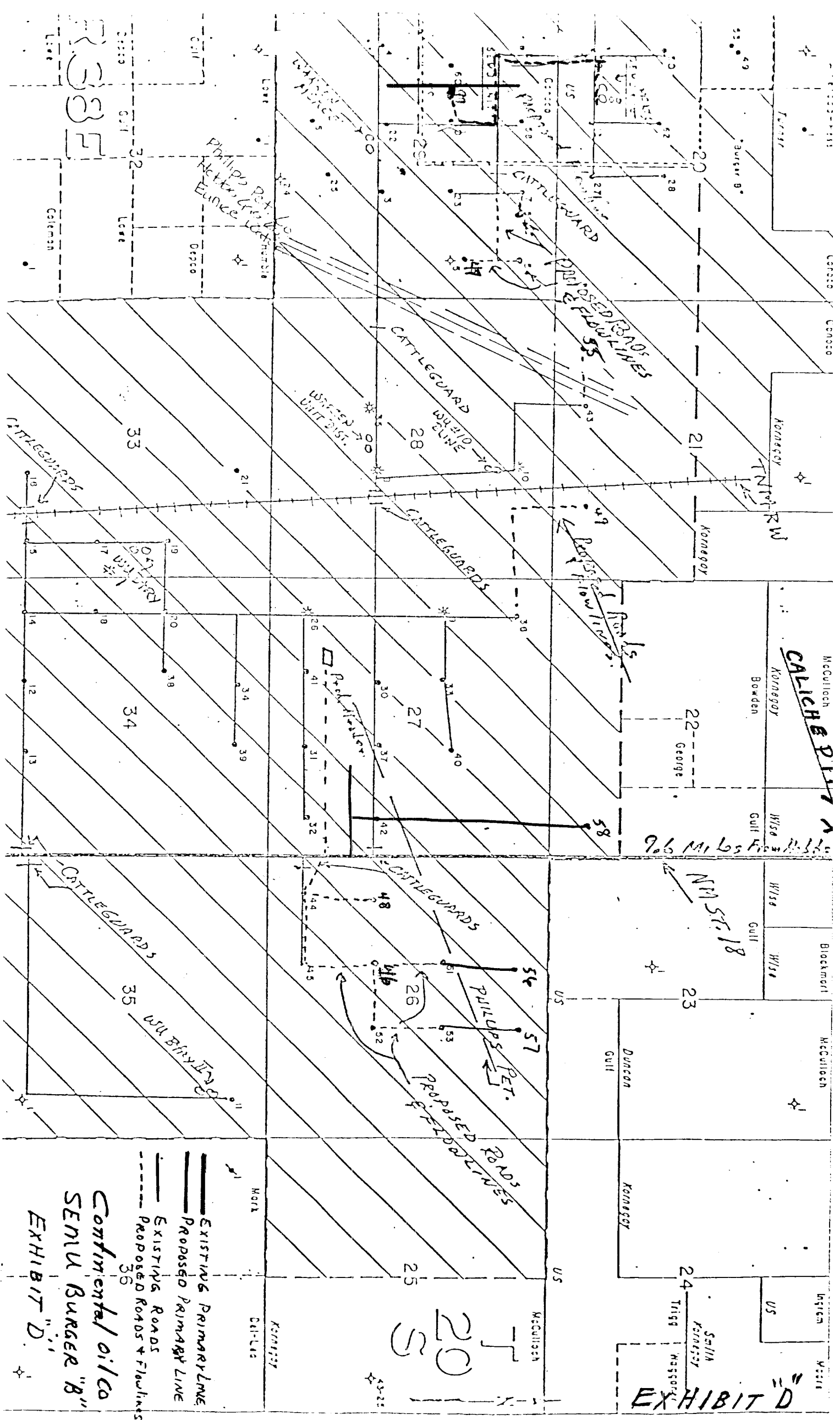
THE H. M. GOSHA COMPANY  
BOX 4227 SAN JOSE, CALIF. 95150  
ALL RIGHTS RESERVED  
1975 Edition

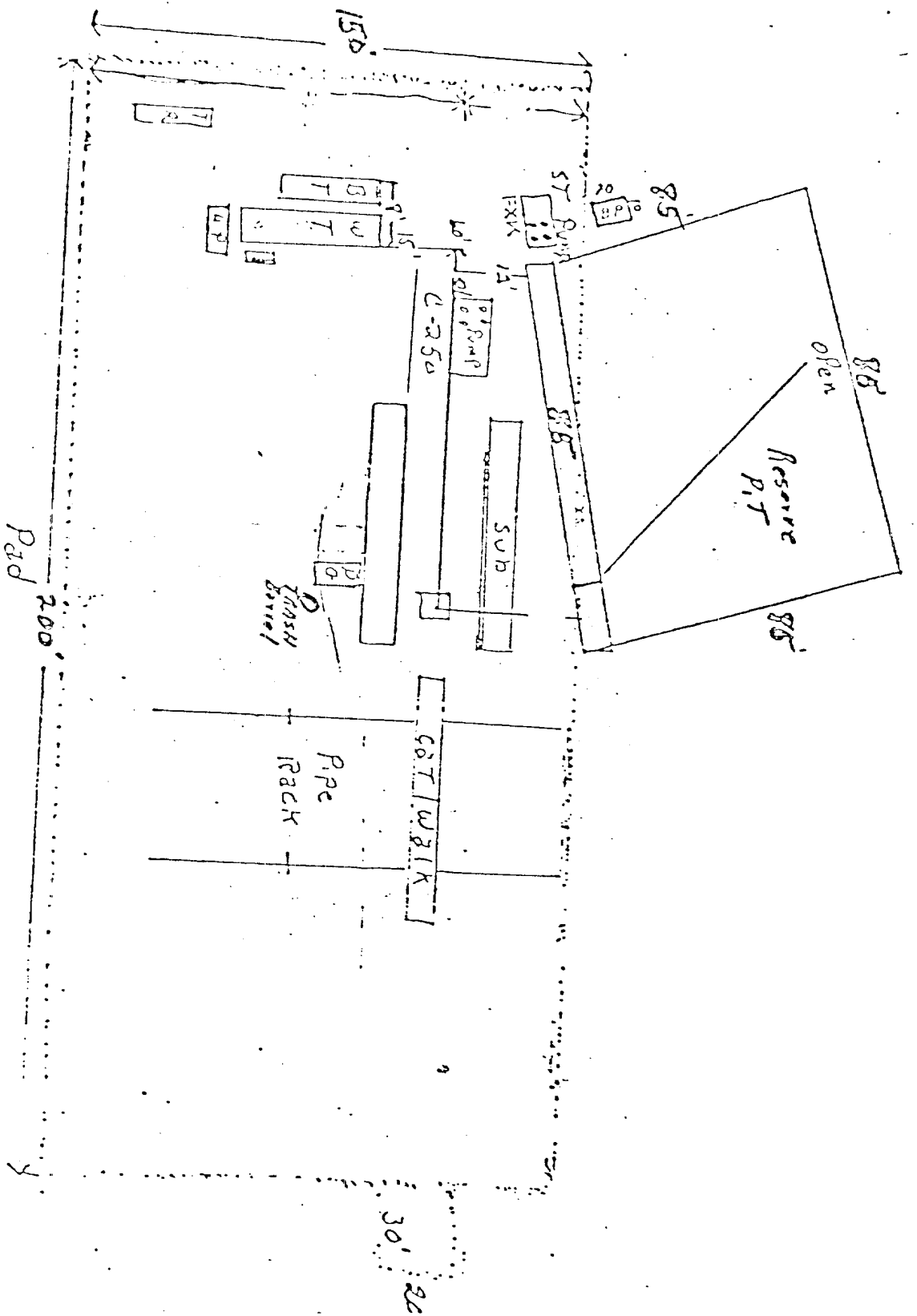
Printed in U.S.A.

CONTINENTAL OIL CO.  
SEMI BURGER "B" #9  
EXHIBIT B



CONTINENTAL OIL CO.  
SEMU BURGER B' No. 99  
EXHIBIT C





CONTINENTS/ OIL CO.  
SEMU BURGER "B"

EXHIBIT "E"

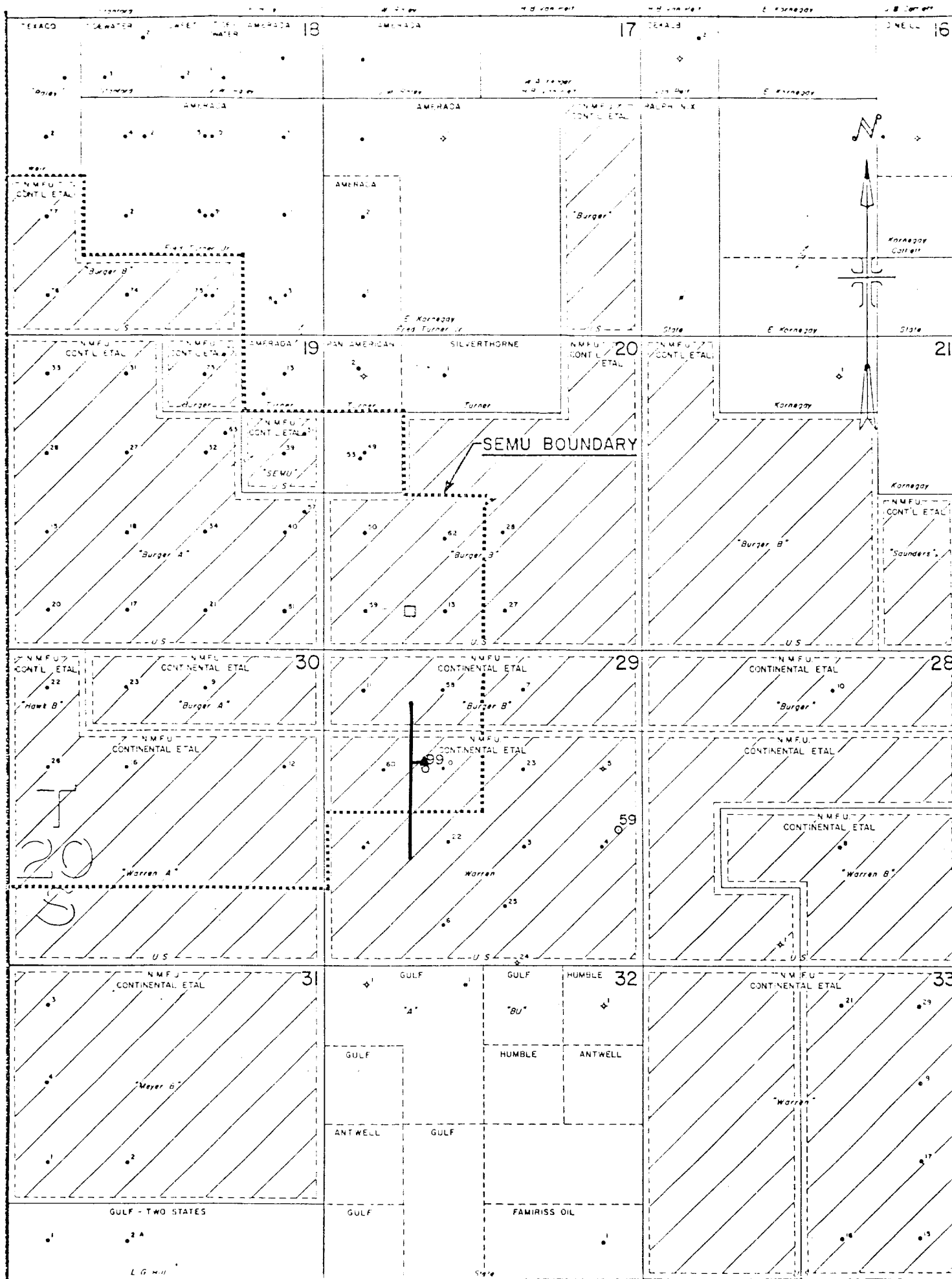
EXHIBIT "E"



CONTINENTAL OIL COMPANY  
SEMU Burger "B" No. 99  
Power Distribution

A plot is attached showing the proposed well location, existing roads, new proposed roads, existing power lines, proposed power lines, also drawings of the pole design.

It is proposed to tie-in to an existing primary line and construct 330' of primary line with a transformer bank at the well site. The new line will be constructed at 330' per span. The proposed line is staked.



R38E

□ TANK BATTERY

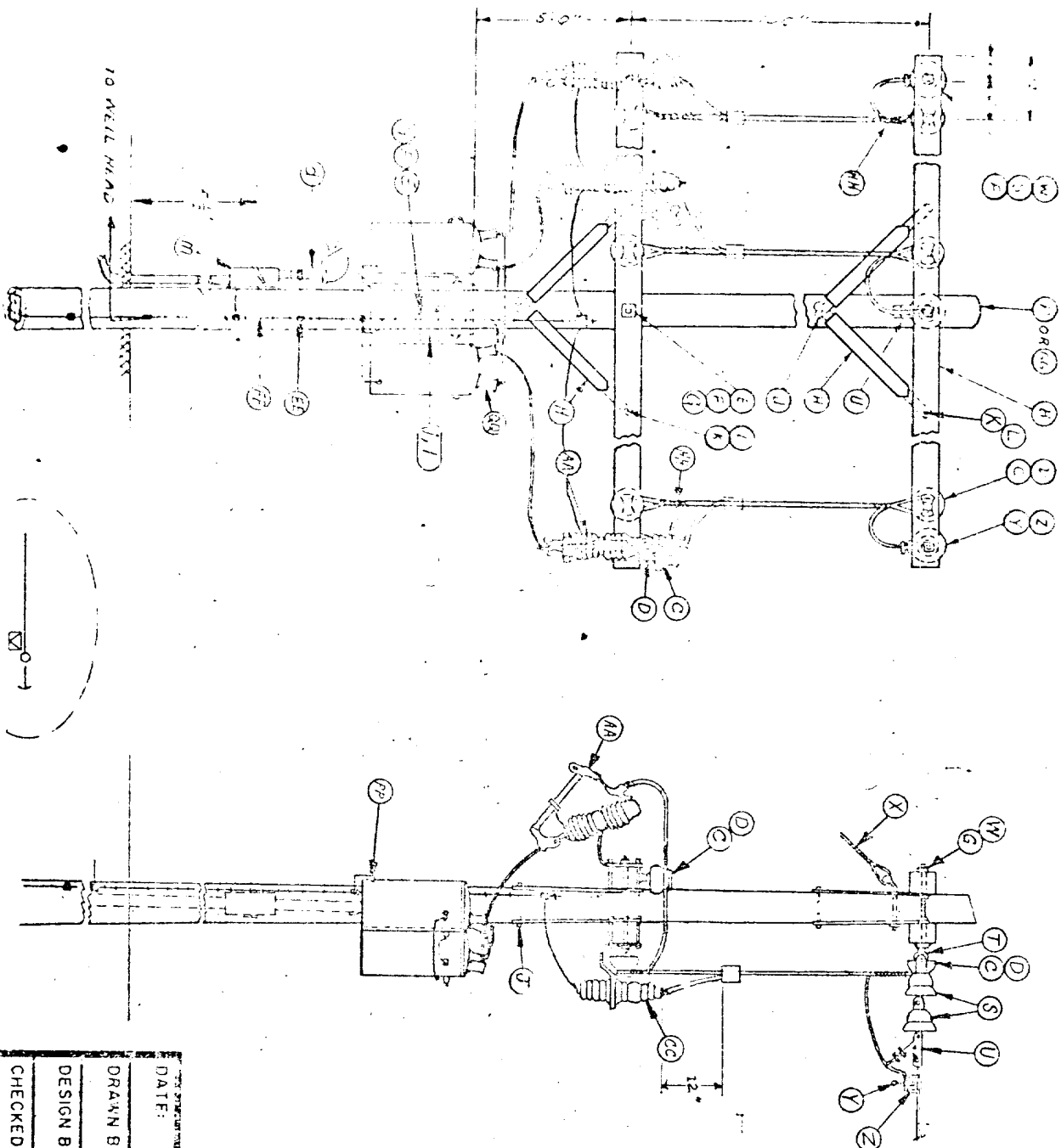
— EXISTING PRIMARY LINE  
 ▲ PROPOSED PRIMARY LINE  
 330' SPAN  
 1 SPAN = 330'

CONTINENTAL OIL COMPANY

PRODUCTION DEPARTMENT—HOBBS DIVISION

LEA COUNTY, NEW MEXICO

SCALE  
 0 1000 2000'



ITEM	QTY	REF
A	4	
B	5	
C	5	
D	5	
E	3	
F	24	
G	12	
H	8	
J	4	
K	8	
L	8	
Page 1	8	ES-1A, NOTE 5
S	6	
T	3	
U	3	
V	5	
X	1	
Y	3	
Z	3	
AA	3	
CC	3	
EE	8	
FF	1	
HH	6	
DD	1	ES-1A, NOTE 2
II	1	
MM	1	
PP	3	
QQ	6	

NOTE:  
 1. CENTER PHASE ON PANK WILL HAVE EPOXY INSULATOR, KEARNLEY # 323015-24 INS. (REF. REFER TO DRAW. ES-2B)  
 2. ALL WIRE FROM POINT "U" WILL BE INSULATED TYPE WIRE ON TRANSFORMER PANK.

DATE:	12-13-71	TITLE:	TRANSFORMER ASSEMBLY
DRAWN BY:	AKD	1PH. TRANS. ASSEMBLY MOUNT	
DESIGN BY:	AKD	PRIM. DEAD-END-12500/480V AC SR	
CHECKED BY:		PRODUCTION DEPT.	CONOCO
APPROVED BY:		JOB:	HOBBS DIVISION
SCALE:	NONE	DRAWING NO.:	ES-9
			ELEC SPECS

ITEM	DESCRIPTION	A. B. CHANGE NO.	JOSLYN NO.	OTHER MFRS. NO.	NO. SUB.
1	35' class 6 creosoted pine pole				
2	3 1/2" x 4 1/2" x 8' treated crossarm				
3	4" positive wet process porcelain pin insulator		463		
4	5/8" x 5" forced steel pin w/sq. washer, nut, & locknut	881			
5	5/8" x 12" machine bolt w/ nut (or length req'd)	881/2			
6	2 1/4" x 2 1/4" x 3/16" x 11/16" hole sq. washer	681/3			
7	5/8" w/ locknut	351/2			
8	1/4" x 1 1/4" x 28" flat crossarm brace	7128			
9	1/2" x 4" w/ Feltier Drive Top Screw	504/54			
10	3/8" x 4 1/2" carriage Bolt w/ Nut	8634 1/2			
11	3/8" w/ locknut	3510			
12	Preforced Aluminum Alloy Armor Rods, size req'd				
13	tie wire #6 strong alum. alloy			KEARNEY #22102550	X
14	Flexy Insulator (Extension Link)				
15	35' class 5 creosoted pine pole			KEARNEY SERIES "81"	X
16	Aluminum double tab Squeeze on Connector for A-SR, Aluminum, or Copper-size req'd				
17	6" Suspension Insulator	66200			
18	5/8" Standard Oval Eye Nut	6502			
19	Primary Lead and Clamp		14050		
20	5/8" x 18" (or length req'd) Double Arming Bolt w/4 sq. nuts	8868			
21	Flying detail - see dwg No. ES-10 for specs.				
22	Hot Line Clamp	5152046P		KEARNEY	
23	Squeeze on basket, size required				X

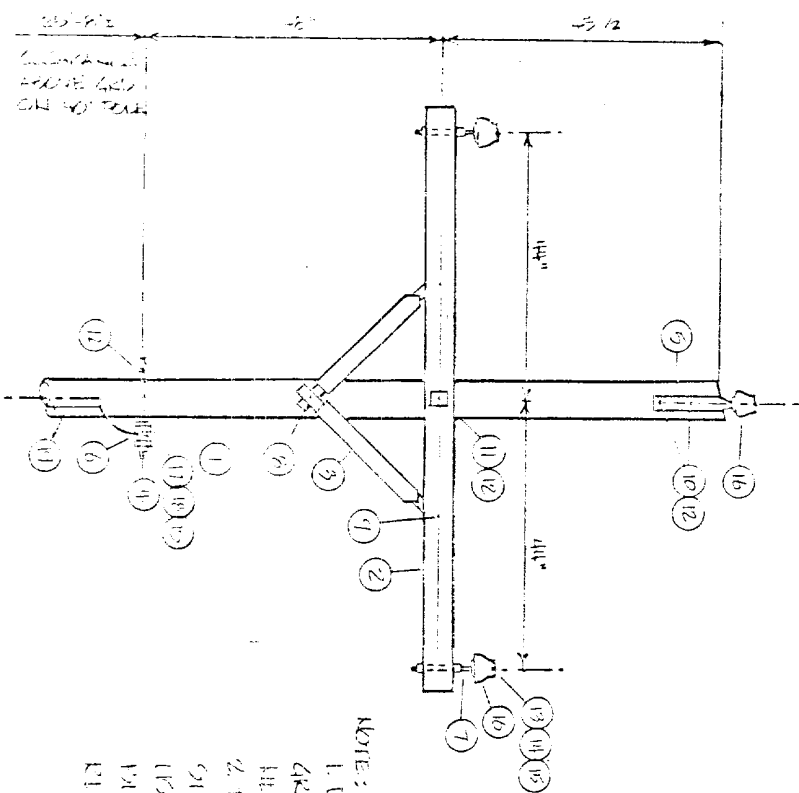
DATE: 12-27-71		TITLE: DESCRIPTION MATERIALS	
DRAWN BY: E. WINTER		<div>CONOCO</div> <div>PRODUCTION DEPT. HOBBS DIVISION</div>	
DESIGN BY:			
CHECKED BY:			
APPROVED BY:		JOB: ELEC SPECS	
SCALE: NONE		DRAWING NO: ES-1 SHEET 1 OF 3	

ITEM	DESCRIPTION	A. B. CHANGE NO.	JOSLYN NO.	OTHER MFRS. NO.	NO SUB.
A	Primary Cutout - 100 amp, 15 KV, 16000 amp int. cap.	F2XX10156			X
B	General Purpose "H" bolt clamp	UC512AGP			
C	14 KV lightning arrester, 10 KV				
D	Steel phase oil switch, 14.4 KV			MICRAW-EDISON KMC-2	
E	split bolt connector, size req'd			BLACKBURN H-SERIES	
F	grounding specs. see dwg No. ES-11 & ES-1A, Note 3				
G	35' class 4 creosoted pine pole				
H	Aluminum deadend Preforms for ACSR, size req'd				
I	30' class 6 creosoted pine pole				
J	0000 REZAD GRND, #4 ACSR - If Req'd - Ref. DWG ES-11,				
K	ES-1A - Note 3				
L	ground connector, motor				
M	400 V. secondary lightning arrester single phase			BURNDY KC-22	X
N	Greenfield type GF liquid-tight flexible steel				
O	conduit, size req'd, w/ necessary liquid-tight				
P	connectors.				
Q	req'd size LB fitting & cover & gasket				
R	transformer tank grounding terminal	GW5-15			
S	Bird Guards (insulating boots on transformer bushings)			WESTINGHOUSE - #212014885	

DATE: 12-27-71		TITLE: DESCRIPTION MATERIAL	
DRAWN BY: E. WINTER		<div>CONDICO</div> <div>HOBBS DIVISION</div>	
DESIGN BY:			
CHECKED BY:			
APPROVED BY:			
SCALE: NONE		JOB: ELEC SPECS	DRAWING NO.: ES-1
		SHEET 2 OF 3	

ITEM	DESCRIPTION	A. B. CHANCE NO.	JOSLYN NO.	OTHER MFRS. NO.	NO SUB.
a	double upset bolt s/sq. nut, round washer, and corner key on short end, sq. nut and NF locknut on long end, 15 1/8" long (or length required.)	7828			
b	wet process porcelain secondary spool insulator, 3" brown glaze		1101		
d	required size conduit w/ servicehead(s) & req'd size & rated insulated conductors. Ref. Dwg. ES-1B *note: provide clamp and ground conduit parallel groove clamp, size req'd			BURNDY SERIES "UC"	
e					
f	secondary insulator clevis for 4" insulator	6510			
g	5/8" thimble nut				
h	5/8" x 12" (or length req'd) straight thimbleye bolt w/sq. nut	5512			
j	transformer cluster mount bracket (small)			ALUMA-FORM 6M3-6	X
l	transformer cluster mount bracket (large)			ALUMA-FORM 15M3-6	X
m	req'd size raintight disconnect & fuses, 3-phase, 600 V. Ref. Dwg. No. ES-1B				
n	16" cross plate anchor (or size req'd)	X-16			
q	8-way expanding anchor (size req'd)	88135			
t	4" brown glaze wet process porcelain secondary spool insulator		10101		
u	5/8" x 7' thimbleye anchor rod w/nut (use twineye if req'd - Chance No. 5347)	5317 (NUT 55006P)			
aa	3/20" high strength guy strand (10,800 lb.)				
bb	prefor-ed guy strip for 3/8" guy strand				
cc	5/8" x 15" angle thimbleye bolt w/nut	5010			
ee	3"x3"x1/4"x11/16" hole curved washer	6813 1/2			X
ff	3" - guy clamp w/3-1/2" bolts				
gg	rodlim size strain insulator	6454			
hh	serv-ing sleeve for 3/8" guy strand				
ii	3/16" x 2-1/2" x 7" lift plate	7887			X
nn	pole bottom ground plate (may use butt-wrap if desired)				
qq	(round) connection (See Dwg. ES-12)				
rr	wet process porcelain secondary spool insulator, 3" - white glaze				
tt	wet process porcelain secondary spool insulator, 4" - white glaze				

DATE: 12-27-71		TITLE: DESCRIPTION MATERIALS	
DRAWN BY: F. WINTER		<div>CONOCO</div> <div>HOBBS DIVISION</div>	
DESIGN BY:			
CHECKED BY:			
APPROVED BY:			
SCALE: NONE		JOB: ELEC SPECS	DRAWING NO.: ES-1
		SHEET 3 OF 3	



NOTES:  
1. DO NOT INSTALL  
GROUND WIRE PROST  
HEUTICAL CONDUCTOR  
2. THIS CONSTRUCTION  
STANDARD TO BE  
USED ON ALL LINES  
BUILT ON NATIONAL  
ELECTRIFIED LANDS

MATERIALS

ITEM	DESCRIPTION	REQ'D	ITEM	DESCRIPTION	REQ'D
1	POLE, 40'	1	17	NEUTRAL CONDUCTOR	-
2	CROSSARM, 3/4" x 4 1/2" x 8'	1	18	ARMOR ROD	1
3	BRACE, WOOD	2	19	POLE GROUND WIRE, #6 AL.	5#
4	STUD RLY	-			
5	RIDGE PIN, 15"	-			
6	WOOD INSULATOR	1			
7	STEEL PIN, 5/8" x 5"	2			
8	LAKA SCREW, 1/2" x 4"	1			
9	CARRAGE BOLT, 3/8" x 4 1/2"	2			
10	MACHINE BOLT, 5/8" x 10"	2			
11	MACHINE BOLT, 5/8" x 4"	1			
12	WASHER, 2 1/2" x 5/8"	5			
13	PHASE CONDUCTOR	-			
14	ARMOR. ROD	3			
15	TIE WIRE, #6 AL.	1#			
	PIN INSULATOR, 9 KV	3			

DATE: 1-10-71	TITLE: PRIMARY 111 LINE POLE
DRAWN BY: J. L. HARRIS	12,000 VOLT ASP.
DESIGN BY:	
CHECKED BY: SP	
APPROVED BY: SP	
SCALE: 1/4" = 1'	
PRODUCTION DEPT.	
HOBBS DIVISION	
JOB:	DRAWING NO:
12,000 VOLT ASP.	ES-26

U. S. Geological Survey

HOBBS DISTRICT

Continental Oil Company  
No. 99 SEMU Burger "B"  
SE $\frac{1}{4}$ NW $\frac{1}{4}$  Sec. 29-10S-38E  
Lea County, New Mexico

Above Data Required on Well Sign

CONDITIONS OF APPROVAL

1. Drilling operations authorized are subject to compliance with the attached General Requirements for Drilling Operations on Federal Oil and Gas Leases, dated January 1, 1977.
2. Notify this office (telephone (505) 393-3612) when the well is to be spudded and in sufficient time for a representative to witness all cementing operations. Attached are names and telephone numbers of Geological Survey and Bureau of Land Management personnel who are available for consultation during construction, drilling, completion, and rehabilitation activities.
3. Immediate notice is required of all blowouts, fires, spills, and accidents involving life-threatening injuries or loss of life.
4. Secure prior approval of the District Engineer for variance from the approved drilling program and before commencing plugging operations, plug-back work, casing repair work, corrective cementing operations, or suspending drilling operations indefinitely.
5. Blowout prevention equipment is to be installed, tested, and in working order before drilling below the surface casing and shall be maintained ready for use until drilling operations are completed.
6. Operator will provide the dirt contractor with a copy of the enclosed Geological Survey "General Requirements For Drilling Operations on Federal Oil and Gas Leases, Hobbs District" prior to commencing construction of road, pad, or other associated developments.
7. In the event the oil or gas test results in a dry hole, the drill pad and access road will be ripped in accordance with "BLM Roswell District's Ripping Recommendations for Caliche or Compacted Drill Pads and Access Roads". (Re seeding of the affected areas may be required at the discretion of the BLM authorized officer).

All ripped surfaces are to be protected from vehicular travel by constructing a dead-end ditch and earthen barricade at the entrance to these ripped areas. The barricade is to be constructed using spoil material from the ditch and should be of sufficient magnitude to discourage vehicle entry.

8. All above ground structures, not subject to applicable conservation and safety requirements, shall be painted to blend with the natural surroundings unless alternate colors for specific equipment are requested and approved. The paint used should be a nonglare, nonreflective, flat, or semi gloss that simulates Fed. Stand. No. 595, color 30318.



9. Minimum required fill of cement behind the 7" casing is to the base of the salt section.