

UNITED STATES  
DEPARTMENT OF THE INTERIOR  
GEOLOGICAL SURVEY

APPLICATION FOR PERMIT TO DRILL, DEEPEN, OR PLUG BACK

1a. TYPE OF WORK

DRILL ☒

DEEPEN ☐

PLUG BACK ☐

b. TYPE OF WELL

OIL  
WELL ☒

GAS  
WELL ☐

OTHER

SINGLE  
ZONE ☐

MULTIPLE  
ZONE ☒

2. NAME OF OPERATOR

Adobe Oil & Gas Corporation

3. ADDRESS OF OPERATOR

1100 Western United Life Bldg., Midland, TX 79701

4. LOCATION OF WELL (Report location clearly and in accordance with any State requirements.)\*

At surface

660 FSL & 2030 FWL

At proposed prod. zone

14. DISTANCE IN MILES AND DIRECTION FROM NEAREST TOWN OR POST OFFICE\*

10 miles NW of Eunice, NM

15. DISTANCE FROM PROPOSED\*

LOCATION TO NEAREST  
PROPERTY OR LEASE LINE, FT.  
(Also to nearest drlg. unit line, if any)

660'

16. NO. OF ACRES IN LEASE

40

17. NO. OF ACRES ASSIGNED

TO THIS WELL

40

18. DISTANCE FROM PROPOSED LOCATION\*

TO NEAREST WELL, DRILLING, COMPLETED,  
OR APPLIED FOR, ON THIS LEASE, FT.

1320'

19. PROPOSED DEPTH

7100

20. ROTARY OR CABLE TOOLS

rotary

21. ELEVATIONS (Show whether DF, RT, GR, etc.)

3566 GLM

22. APPROX. DATE WORK WILL START\*

July 20, 1978

23. PROPOSED CASING AND CEMENTING PROGRAM

SIZE OF HOLE	SIZE OF CASING	WEIGHT PER FOOT	SETTING DEPTH	QUANTITY OF CEMENT
20"	15"	conductor	40'	6 yds (to surface)
12-1/4"	8-5/8"	24#	1650'	750 sx (to surface)
7-7/8"	5-1/2"	15.5#	7100'	500 sx

We propose to set 40' of conductor pipe, drill a 12-1/4" hole to 1650'+ (80' Rustler). Run 8-5/8" surface casing & cement to surface. 7-7/8" hole will be drilled to a depth of 7100'+ and 5-1/2" casing run for the production string. We anticipate a dual completion in the Blinberry Oil & Gas pool and the Warren (Tubb) oil pool.

SEE ATTACHED FOR  
CONDITIONS OF APPROVAL

Unless Drilling Operations have  
Commenced, this drilling approval  
expires OCT 20 1978

"APPROVAL TO BE GRANTED  
WHILE DRILLING AND TESTING."

IN ABOVE SPACE DESCRIBE PROPOSED PROGRAM: If proposal is to deepen or plug back, give data on present productive zone and proposed new productive zone. If proposal is to drill or deepen directionally, give pertinent data on subsurface locations and measured and true vertical depths. Give blowout preventer program, if any.

24.

SIGNED

TITLE Dist. Prod. Mgr.

DATE 7/6/78

(This space for Federal or State office use)

PERMIT NO.

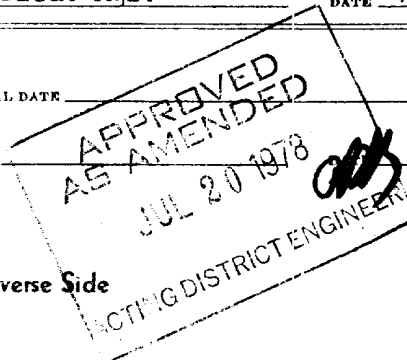
APPROVAL DATE

APPROVED BY

TITLE

CONDITIONS OF APPROVAL, IF ANY:

\*See Instructions On Reverse Side



RELEASED

JUL 25 1978

CD. CONSERVATION COMM.  
WASH. D. C.

NEW MEXICO OIL CONSERVATION COMMISSION  
WELL LOCATION AND ACREAGE DEDICATION

Form C-102  
Supersedes C-128  
Effective 1-1-65

All distances must be from the outer boundaries of the Section.

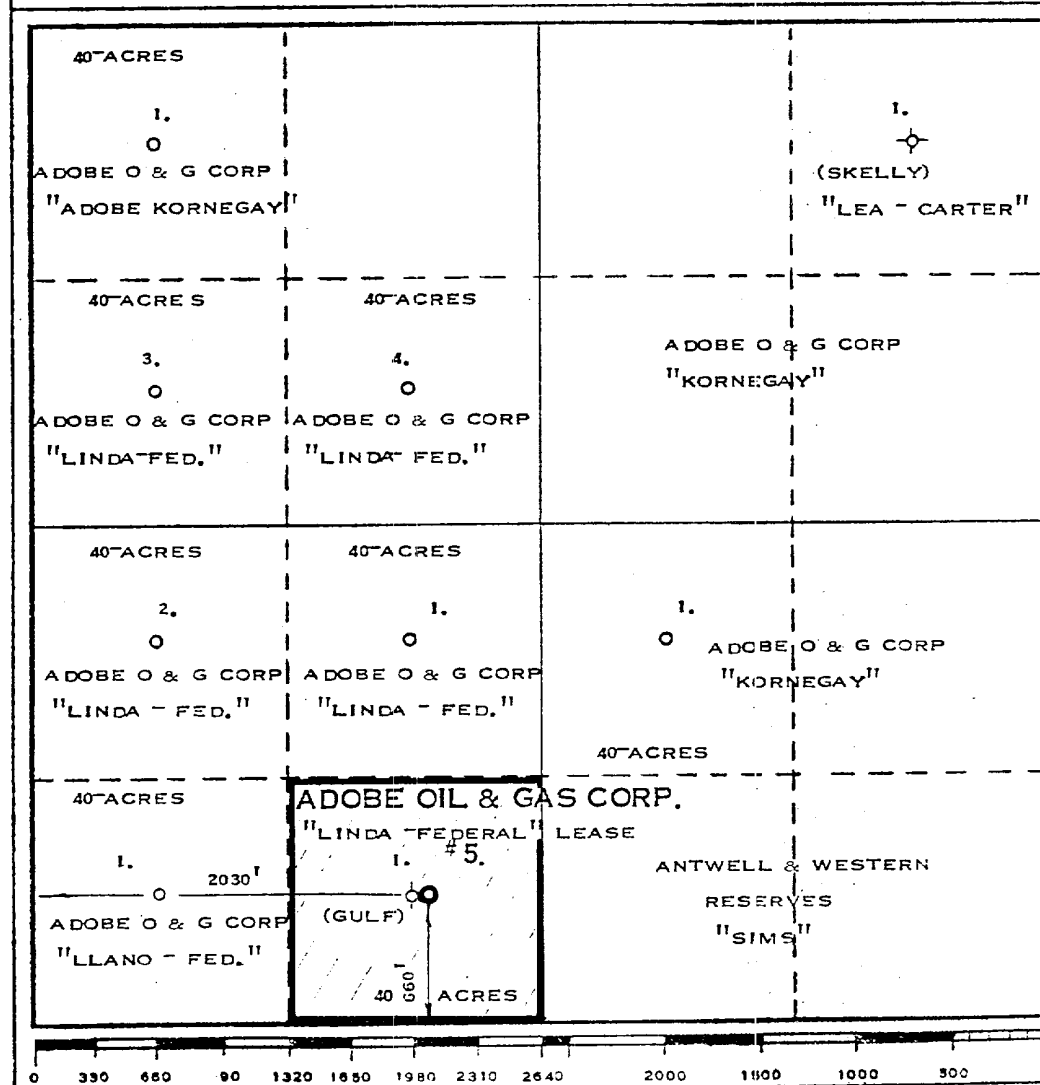
Operator <b>ADOBE OIL &amp; GAS CORP.</b>			Lease <b>LINDA - FEDERAL</b>		Well No. <b>5</b>
Unit Letter <b>"N"</b>	Section <b>-23</b>	Township <b>-20-S</b>	Range <b>-38-E</b>	County <b>LEA</b>	
Actual Footage Location of Well: <b>660</b> feet from the <b>SOUTH</b> line and <b>2030</b> feet from the <b>WEST</b> line					
Ground Level Elev. <b>3566</b>	Producing Formation <b>DUAL</b>	Pool <b>BLINEBRY - TUBB</b>		Dedicated Acreage: <b>40</b> Acres	

1. Outline the acreage dedicated to the subject well by colored pencil or hachure marks on the plat below.
2. If more than one lease is dedicated to the well, outline each and identify the ownership thereof (both as to working interest and royalty).
3. If more than one lease of different ownership is dedicated to the well, have the interests of all owners been consolidated by communitization, unitization, force-pooling, etc?

☐ Yes ☐ No If answer is "yes," type of consolidation \_\_\_\_\_

If answer is "no," list the owners and tract descriptions which have actually been consolidated. (Use reverse side of this form if necessary.) \_\_\_\_\_

No allowable will be assigned to the well until all interests have been consolidated (by communitization, unitization, forced-pooling, or otherwise) or until a non-standard unit, eliminating such interests, has been approved by the Commission.



CERTIFICATION

I hereby certify that the information contained herein is true and complete to the best of my knowledge and belief.

Name Carl Bond  
Position Dist. Prod. Mgr.  
Company Adobe Oil & Gas Corp.  
Date 7-1-78

I hereby certify that the well location shown on this plat was plotted from field notes of actual surveys made by me or under my supervision, and that the same is true and correct to the best of my knowledge and belief.

Date Surveyed JUNE 30, 1978  
Registered Professional Engineer and Land Surveyor  
MAX A. SCHUMANN JR.  
Certificate No. 1510

RECEIVED

JUL 25 1978

CIL CONSERVATION COMM.  
HONOLULU, H. I.

## ADOBE OIL &amp; GAS CORPORATION

1100 WESTERN UNITED LIFE BLDG.  
MIDLAND, TEXAS 79701  
915 683-4701

July 6, 1978

LINDA FEDERAL No. 5

Adobe Oil & Gas Corporation  
660 FSL & 2030 FWL of Section 23, T-20-S, R38E, Lea Co., NM

COMPLIANCE W/NTL-6

1. Surface formation is tertiary w/blow sand cover.
2. Formation tops:
  - Rustler 1580' (anhydrite)
  - Yates 2850'
  - San Andres 4230'
  - Glorieta 5520'
  - Blinberry 5990'
  - Tubb 6550'
  - T.D. 7100'±
3. As above.
4. 15" conductor will be set @ 40' & cemented to surface. 8-5/8" 24# K-55 ST&C new csg will be set @ 1650'± & cemented to surface. 5-1/2" 15.5# K-55 ST&C new csg will be set @ 7100'±.
5. Double gate preventor with blind & pipe rams will be used w/3000# pressure rating. We plan to nipple up BOP & test to 1000# prior to drilling plug in surface csg @ 1650'. Preventors will be tested daily during operations.
6. 10.2#/gal salt mud will be used as drilling fluid.
7. No abnormal pressures or lost circulation zones are present in this area; therefore, a minimum of auxillary equipment will be necessary. A full opening valve will be available on floor to be stabbed into DP when Kelly is not in the string.
8. No testing or coring will be done prior to setting csg. Logs will be run from T.D. to surface casing @ 1650'±. The log suite will include Gr-Sonic w/caliper and Dual Laterolog.
9. No abnormal pressure or temperature will be encountered.
10. Hydrogen sulfide is not present. Wellhead equipment will be designed for 3000# maximum pressure (series 900). Anticipated starting date will be July 20, 1978, or as soon as approval is obtained from U.S.G.S

RECEIVED

JUL 25 1978

CU. CONSERVATION COMM.  
10003, N. M.

## ADOBE OIL &amp; GAS CORPORATION

1100 WESTERN UNITED LIFE BLDG.  
MIDLAND, TEXAS 79701  
915 683-4701

July 6, 1978

U.S.G.S.  
P. O. Box 1157  
Hobbs, New Mexico 88240

Re: Restoration Agreement  
Between Adobe Oil & Gas  
Corporation and Mr. Earl  
Kornegay  
Linda Federal #5  
Sec. 23, T-20-S, R38E,  
Lea County, New Mexico

Gentlemen:

Adobe Oil & Gas Corporation has agreed with Mr. Kornegay to fence pits and leave them fenced until such time that they can be filled and restored to original contours. Should the well be plugged and abandoned, the roads and location will be left intact.

Sincerely,



Carl Bond  
Dist. Prod. Mgr.

CB:mag





## ADOBE OIL &amp; GAS CORPORATION

1100 WESTERN UNITED LIFE BLDG.  
MIDLAND, TEXAS 79701  
915 683-4701

July 6, 1978

## SURFACE USE AND OPERATIONS PLAN

OPERATOR: Adobe Oil & Gas Corporation  
WELL NAME: Linda Federal #5  
LOCATION: 660 FSL & 2030 FWL of Section 23, T-20-S, T38E  
COUNTY & STATE: Lea County, New Mexico

## I. Existing Roads:

Existing lease road to the Linda Federal #1 well will be used. This road exits from Highway 18, approximately 10 miles north of Eunice, New Mexico.

See attached map (1).

## II. Planned Access Roads:

No access road will be necessary. The location will be just north of existing road and location pad will reach north side of road. The location was constructed by Gulf to drill their Turner #1 (dry hole). The only construction required will be a 50' extension to the east side of the existing location.

See attached map (1).

## III. Location of Existing Wells:

Existing wells in the area are operated by Adobe Oil & Gas Corporation.

See attached map.

## IV. Location of Tank Batteries, Production Facilities, and Production, Gathering and Service Lines: SEE ATTACHED MAP

Pipelines will be run on the east side of the road R.O.W. to a point east of the proposed location for well #5 from the existing battery.

## V. Location and Type of Water Supply (Rivers, Creeks, Lakes, Ponds, and Wells):

Water will be trucked to location from Eunice, NM approximately 10 miles SW of the location. There is no water available in the immediate proximity of the well.

## VI. Source of Construction Materials:

Caliche will be hauled from Mr. Earl Kornegay's pit located in Section 22, T-20-S, R38E, Lea County, New Mexico. This pit is approximately 1-1/4 miles from the location by road.

## VII. Methods for Handling Waste Disposal:

Burn pits adequately deep will be used for ordinary combustible trash. Enclosed and protected sumps will be kept to a minimum and non-combustibles will be buried below plow depths.

## VIII. Ancillary Facilities:

No camp or airstrip will be constructed.

RECEIVED

JUL 25 1978

FIL CONSERVATION DIVISION  
HOBBS, N. M.

IX. Well Site Layout:

It will not be necessary to construct any road. The location will be constructed as per attached plat and surfaced with caliche. The well be drilled on the site of Gulf Turner #1 (dry hole). It will be necessary to construct only a 50' extension to the existing location on the east side.

X. Plans for Restoration of the Surface:

Upon completion of the well, pits will remain fenced until they can be cleaned up. Pits will be filled and the location restored to original contours as per agreement with Mr. E. Kornegay, surface owner. All non-combustible trash will be buried.

XI. Other Information:

Topography - Flat, gentle slope to west beyond location.

Blow sand with scrub oak and native grasses.

Surface Lease - Mr. Earl Kornegay

No dwellings, water, or historical sites are on or near proposed location.

XII. Lessee's or Operator's Representatives:

Name: Paul Gregory

Address: 4400 Stanolind, Midland, TX 79701

Phone: 915/697-2835 (home)

915/683-4701 (office)

806/637-6713 (mobile)

Name: Carl Bond

Phone: 915/683-7859 (home)

915/683-4701 (office)

Name: Red Rogers

Phone: 915/694-3171 (home)

915/683-4701 (office)

XIII. Certification:

I hereby certify that I, or persons under my direct supervision have inspected the proposed drillsite and access route; that I am familiar with the conditions which presently exist; that the statements made in this plan are, to the best of my knowledge, true and correct; and, that the work associated with the operations proposed herein will be performed by Adobe Oil & Gas Corporation and its contractors and subcontractors in conformity with this plan and the terms and conditions under which it is approved.

7-6-78  
Date

Carl Bond  
Name

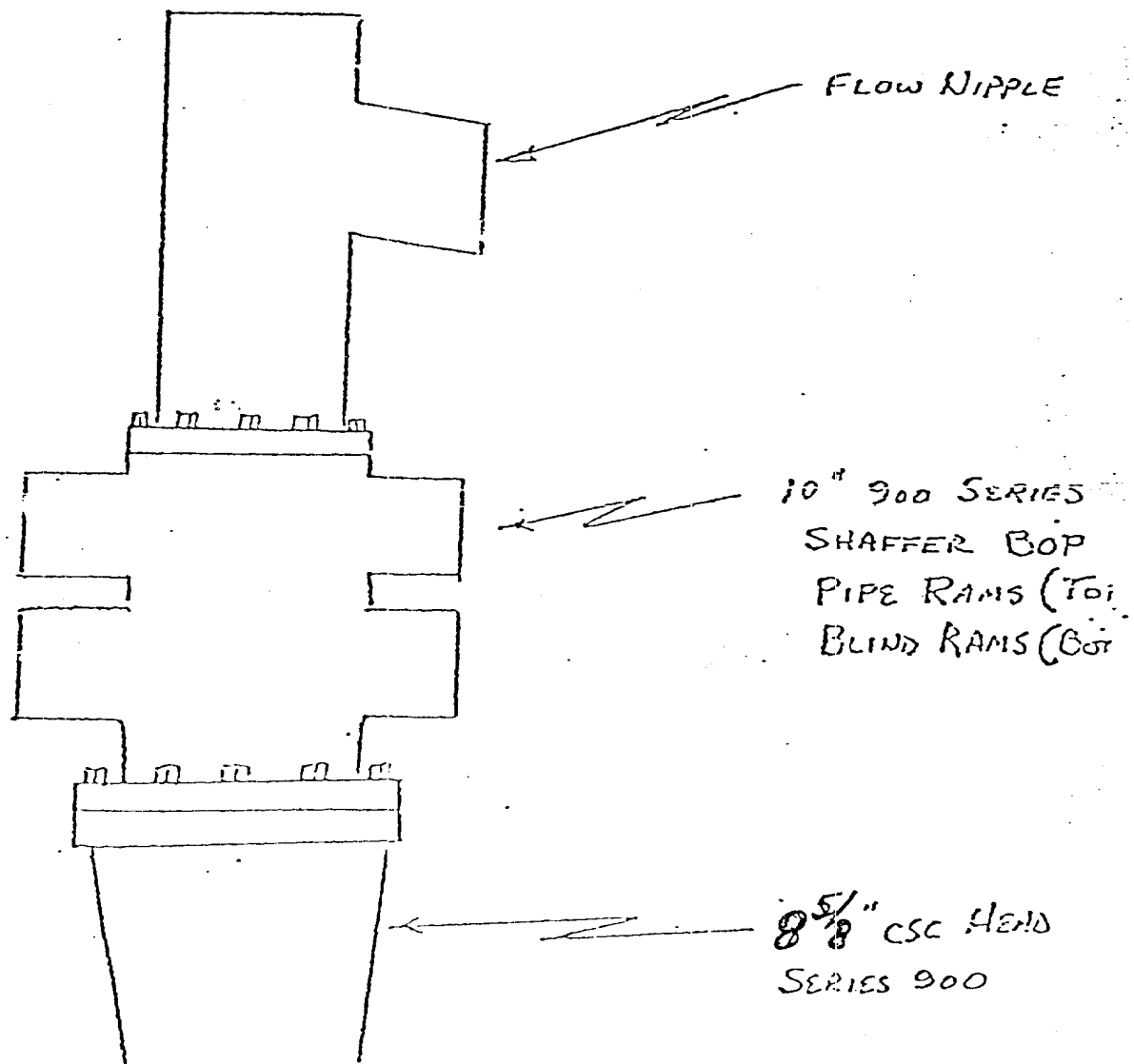
District Production Manager  
Title

RECEIVED

JUL 25 1978

CIL COPY SENT TO [illegible]  
[illegible], PL. 10

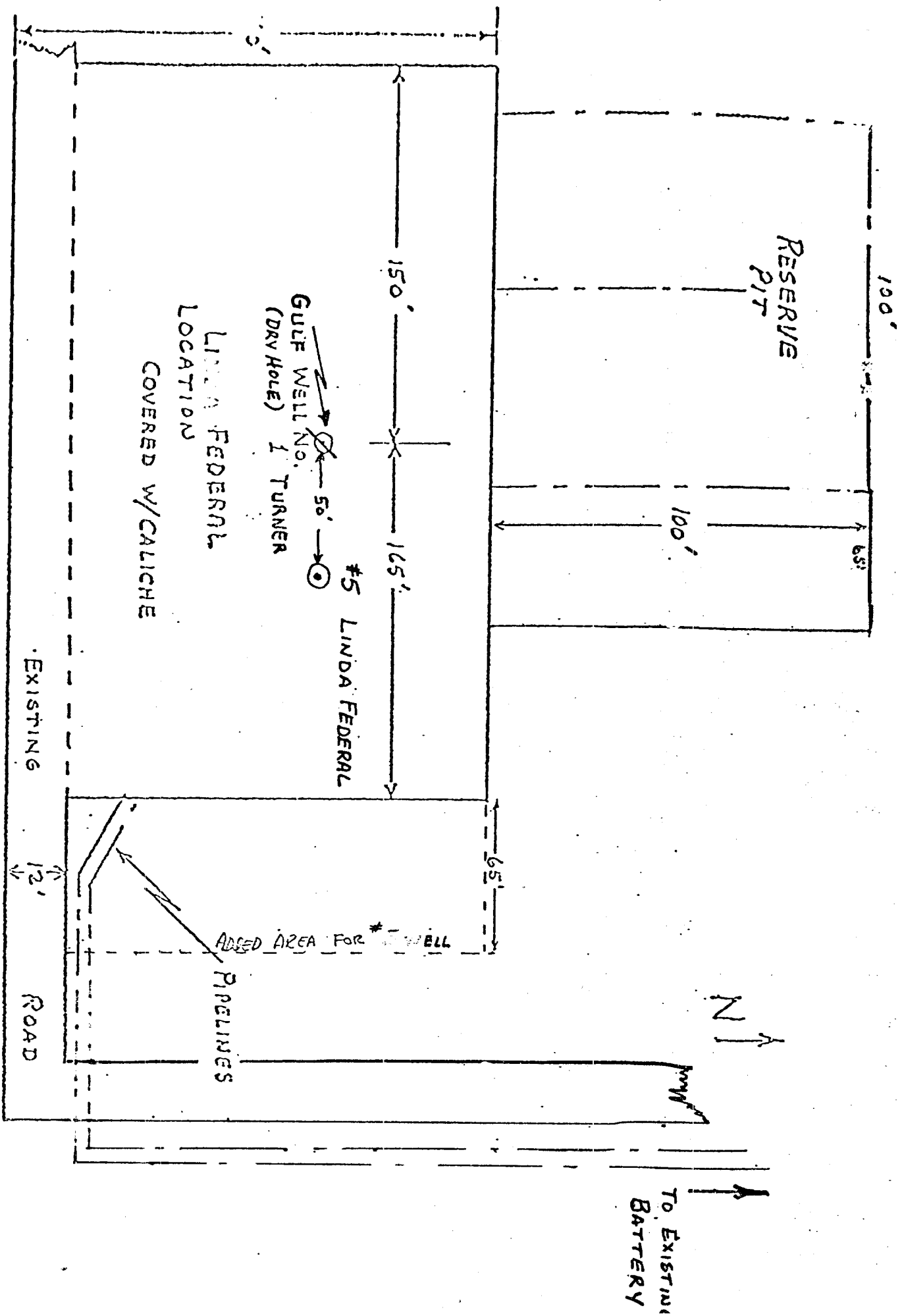
ADDOBE OIL & GAS COR.  
LINDA FEDERAL #5  
LEA CO, N. MEXICO  
TOM BROWN INC.  
(DRLG. CONTRACTOR)



RECEIVED

JUL 25 1978

CIL CONSERVATION COMM.  
HOBBS, N. M.

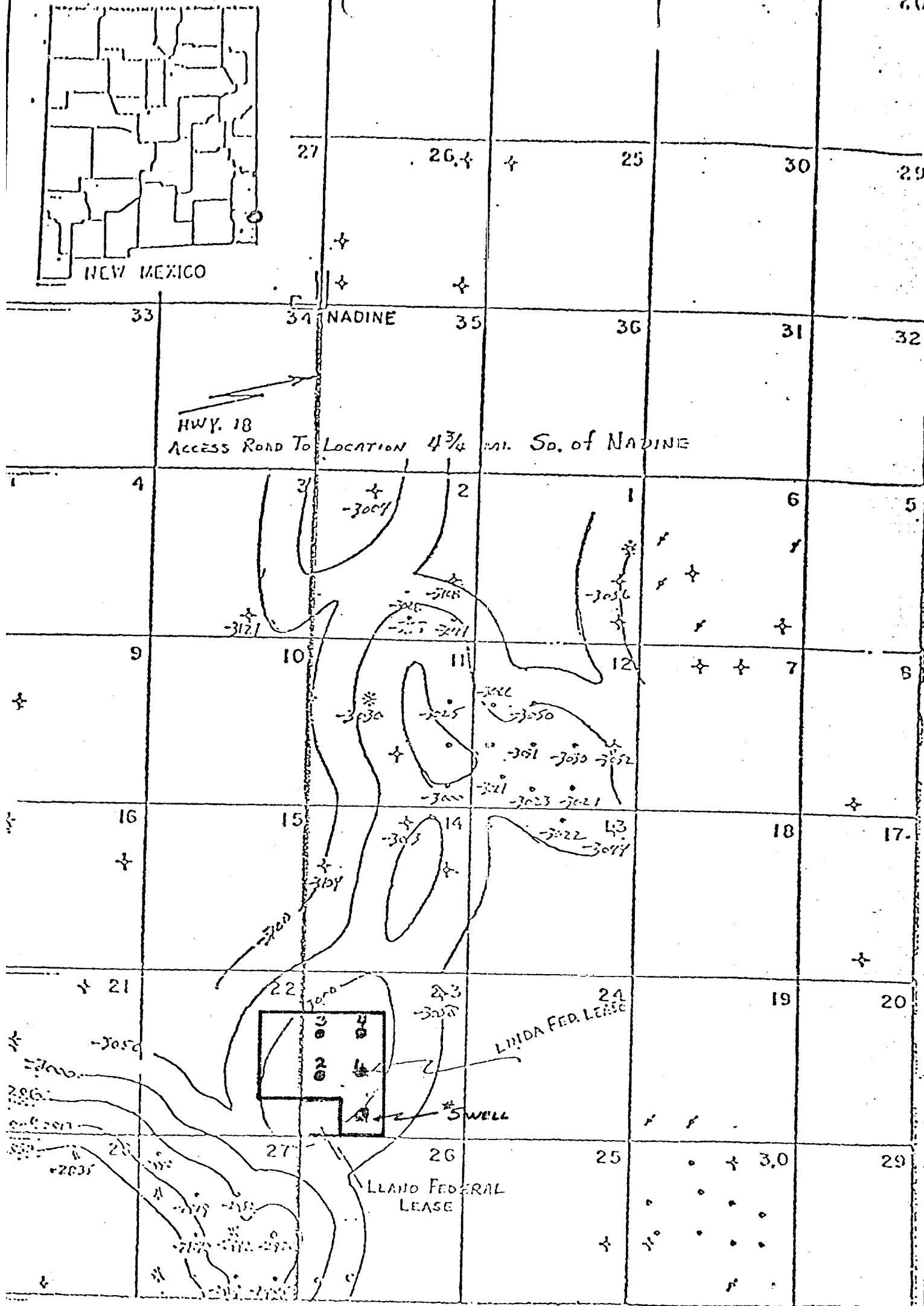


RECEIVED

JUL 25 1978

OIL CONSERVATION COMM.  
HOBBS, N. M.





ADORE OIL CO.  
LINDA FED. LEASE  
LEA CO. NEW MEX.  
S 1/4 SEC. 23 T20S R30E  
TUBB STRUCTURE  
C.R. 50' SCALE 1" = 400'

- OIL WELL
- GAS WELL
- DRY HOLE
- S.W. WELL

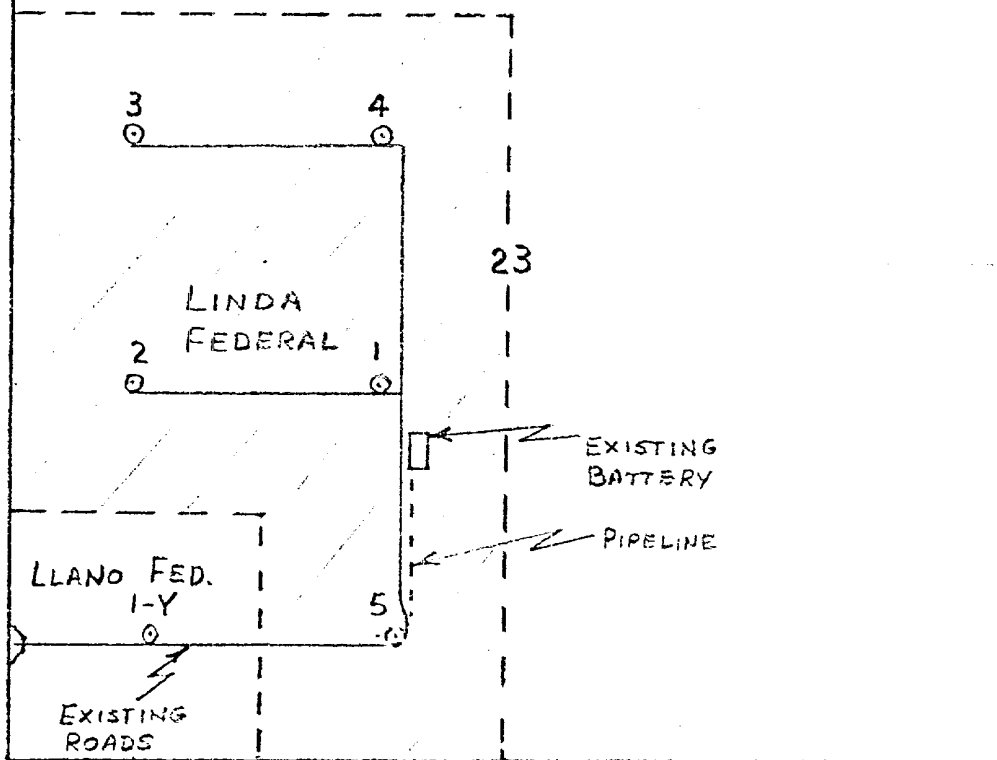
RECEIVED

JUL 25 1978

CIL CONSERVATION COMM.  
HOBBS, N. M.

HWY  
(18)

T20S R38E



RECEIVED

JUL 25 1978

OIL CONSERVATION COMM.  
HOBBS, N. M.

U. S. Geological Survey

HOBBS DISTRICT

Adobe Oil & Gas Corporation  
No. 5 Linda Federal  
SE $\frac{1}{4}$ SW $\frac{1}{4}$  Sec. 23-20S-38E  
Lea County, New Mexico

Above Data Required on Well Sign

CONDITIONS OF APPROVAL

1. Drilling operations authorized are subject to compliance with the attached General Requirements for Drilling Operations on Federal Oil and Gas Leases, dated January 1, 1977.
2. Notify this office (telephone (505) 393-3612) when the well is to be spudded and in sufficient time for a representative to witness all cementing operations. Attached are names and telephone numbers of Geological Survey and Bureau of Land Management personnel who are available for consultation during construction, drilling, completion, and rehabilitation activities.
3. Immediate notice is required of all blowouts, fires, spills, and accidents involving life-threatening injuries or loss of life.
4. Secure prior approval of the District Engineer for variance from the approved drilling program and before commencing plugging operations, plug-back work, casing repair work, corrective cementing operations, or suspending drilling operations indefinitely.
5. Blowout prevention equipment is to be installed, tested, and in working order before drilling below the surface casing and shall be maintained ready for use until drilling operations are completed.
6. Operations must be in compliance with the provisions of the landowner agreement concerning surface disturbance and surface restoration.
7. Cement for 5-1/2" casing should be sufficient to fill to base of salt.

RECEIVED

JUL 25 1978

OIL CONSERVATION COMM.  
HOBBS, N. M.