

NO. OF COPIES RECEIVED	
DISTRIBUTION	
SANTA FE	
FILE	
U.S.G.S.	
LAND OFFICE	
OPERATOR	

NEW MEXICO OIL CONSERVATION COMMISSION

Form C-101
Revised 1-1-65

5A. Indicate Type of Lease
STATE <input checked="" type="checkbox"/> FEE <input type="checkbox"/>
5. State Oil & Gas Lease No.
B-1557

APPLICATION FOR PERMIT TO DRILL, DEEPEN, OR PLUG BACK

1a. Type of Work		7. Unit Agreement Name	
b. Type of Well DRILL <input type="checkbox"/> DEEPEN <input checked="" type="checkbox"/> PLUG BACK <input type="checkbox"/>		8. Farm or Lease Name	
OIL WELL <input checked="" type="checkbox"/> GAS WELL <input type="checkbox"/> OTHER <input type="checkbox"/>		State C Tract 13	
2. Name of Operator		9. Well No.	
Amoco-Production Company		10	
3. Address of Operator		10. Field and Pool, or Wildcat	
P. O. Box 68, Hobbs, New Mexico 88240		Blinebry Oil & Gas	
4. Location of Well		12. County	
UNIT LETTER C LOCATED 990 FEET FROM THE North LINE		Lea	
AND 1980 FEET FROM THE West LINE OF SEC. 36 TWP. 21-S RGE. 37-E NMPM			
19. Proposed Depth		19A. Formation	
7600		Granite Wash	
20. Rotary or C.T.		Rotary	
21. Elevations (Show whether Oil, RT, etc.)		22. Approx. Date Work will start	
3369.3' GR		As soon as possible	
21A. Kind & Status Plug. Bond		21B. Drilling Contractor	
Blanket-on file			

PROPOSED CASING AND CEMENT PROGRAM

SIZE OF HOLE	SIZE OF CASING	WEIGHT PER FOOT	SETTING DEPTH	SACKS OF CEMENT	EST. TOP
12-1/4"	9-5/8"	36#	1278'	450 Sx C1 C	Surface
8-3/4"	7"	26#	7600'	350 Sx C1 C	1120'

Propose to recompleate and commingle the Wantz Granite Wash, the Wantz Abo, the Drinkard, and the current producing horizon the Blinebry. Also perforate and acidize additional Abo and Drinkard pay per the following:

Rig up service and pull rods, pump, and tubing. Kill well with 2% KCL water. RIH with bit and drill out 35' of cement and CIBP set at 6447'. With bit, tag RBP set at approximately 6955' and circulate and clean out hole. POH. RIH with tubing and retrieving head. Latch onto RBP and POH. RIH with tubing and retrieving head. Latch onto RBP set at approximately 7431' and POH. RIH with bit and circulate and clean out hole to PBTD at 7580'. POH. RIH with casing gun and perforate, with 2 JSPF, Wantz Abo intervals 7324'-7330', 7235'-7240', 7120'-7123', 7063'-7065', 7004'-7009', 6992'-6996', and 6782'-6786'. Perforate Drinkard intervals 6664'-6668', 6648'-6654', 6636'-6640', 6622'-6624', 6612'-6618', 6600'-6603', and 6590'-6593'. RIH with tubing, treating packer, 60' tubing as tailpipe with seating nipple, and RBP hung on end. Set RBP at 7400'. Come off RBP and raise tailpipe to 6760'. Set packer at 6700'. Acidize Abo perms with 2500 gals 0+5-NMOCD, H 1-HOU 1-F. J. Nash, HOU 1-CMH

IN ABOVE SPACE DESCRIBE PROPOSED PROGRAM: IF PROPOSAL IS TO DEEPEN OR PLUG BACK, GIVE DATA ON PRESENT PRODUCTIVE ZONE AND PROPOSED NEW PRODUCTIVE ZONE, GIVE BLOWOUT PREVENTER PROGRAM, IF ANY.

I hereby certify that the information above is true and complete to the best of my knowledge and belief.

Signed Charles M. Herring Title Assist. Admin. Analyst Date 5-16-83

ORIGINAL SIGNED BY EDDIE SEAY

OIL & GAS INSPECTOR

MAY 18 1983

APPROVED BY _____ TITLE _____ DATE _____

CONDITIONS OF APPROVAL, IF ANY:

15% NEFE acid as follow

- A) Pump 500 gals of 15% NEFE Acid at 4 BPM. An average expected treating pressure of 4800 psi.
- B) Pump remaining 2000 gals. Acid containing 2 balls/BBL acid.
- C) Flush to perfs with 43 bbl 2% KCL brine.
- D) Swab down well to recover all acid load or until swab dry.

Release packer and lower tailpipe to 7400'. Latch on and retrieve RBP. Raise tailpipe and RBP to 6680' and set RBP. Come off RBP and spot 170 gals. 15% NEFE Acid over Drinkard perfs. Raise tailpipe to 6516' and set packer. Acidize Drinkard perfs with 2600 gals. 15% NEFE acid as follows:

- A) Pump 600 gals acid at 4 BPM. Expected average treating pressure of 3000 psi.
- B) Pump remaining 2000 gals acid containing 2 balls/bbl acid.
- C) Flush to perfs with 39 bbls 2% KCL brine.
- D) Swab back well.

Release packer and lower tailpipe to 6680'. Latch on and retrieve RBP. POH. RIH with tubing and tubing anchor with seating nipple on bottom to 7560'. Tubing anchor to set at 5500'. Swab well down and evaluate production. If well does not flow, run rods and pump.

** Recieved approval to downhole commingle these 4 zones from NMOCD, Santa Fe, dated 2-21-83, Order No. R-7209.

RECEIVED
MAY 17 1983
O.C.D.
HOBBS OFFICE

**MEXICO OIL CONSERVATION COMMISSION
WELL LOCATION AND ACREAGE DEDICATION PLAT**

Form C-102
Supersedes C-128
Effective 1-1-65

All distances must be from the outer boundaries of the Section

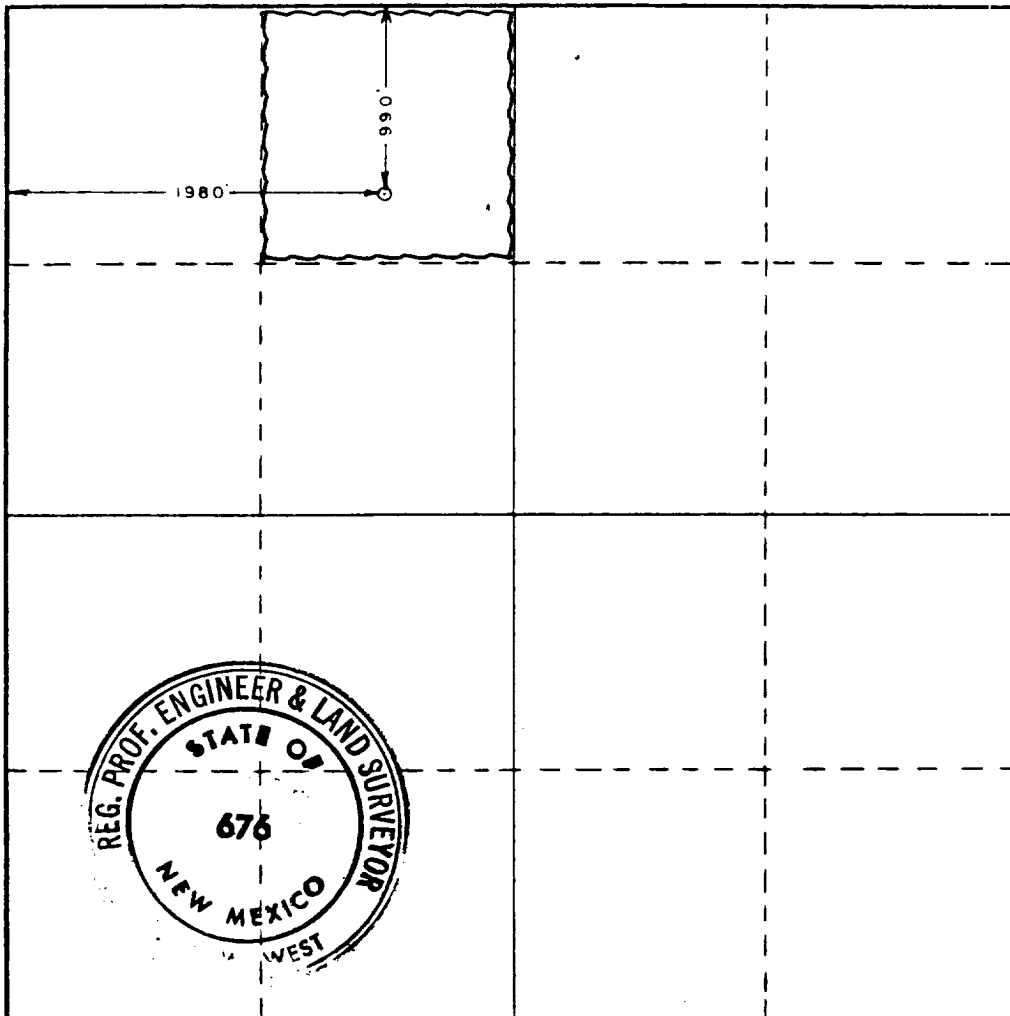
Operator Amoco Production CO.			Lease State "C" Tract 13		Well No. 10
Unit Letter C	Section 36	Township 21 South	Range 37 East	County Lea	
Actual Footage Location of Well: 990 feet from the North line and 1980 feet from the West line					
Ground Level Elev. 3369.3	Producing Formation Granite Wash		Pool Wantz Granite Wash		Dedicated Acreage: 40 Acres

1. Outline the acreage dedicated to the subject well by colored pencil or hatchure marks on the plat below.
2. If more than one lease is dedicated to the well, outline each and identify the ownership thereof (both as to working interest and royalty).
3. If more than one lease of different ownership is dedicated to the well, have the interests of all owners been consolidated by communitization, unitization, force-pooling, etc?

☐ Yes ☐ No If answer is "yes;" type of consolidation _____

If answer is "no," list the owners and tract descriptions which have actually been consolidated. (Use reverse side of this form if necessary.) _____

No allowable will be assigned to the well until all interests have been consolidated (by communitization, unitization, forced-pooling, or otherwise) or until a non-standard unit, eliminating such interests, has been approved by the Commission.



CERTIFICATION

I hereby certify that the information contained herein is true and complete to the best of my knowledge and belief.

Name: *Charles M. Loring*
 Position: **Assist. Admin. Analyst**

Company: **Amoco Production Company**

Date: **May 16, 1983**

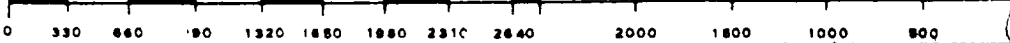
I hereby certify that the well location shown on this plat was plotted from field notes of actual surveys made by me or under my supervision, and that the same is true and correct to the best of my knowledge and belief.

Date Surveyed: **August 19, 1978**

Registered Professional Engineer and/or Land Surveyor

John W. West

Certificate No. **John W. West 676**
Ronald J. Eidson 3239



**MEXICO OIL CONSERVATION COMMISSION
WELL LOCATION AND ACREAGE DEDICATION PLAT**

Form C-102
Supersedes C-128
Effective 1-1-65

All distances must be from the outer boundaries of the Section

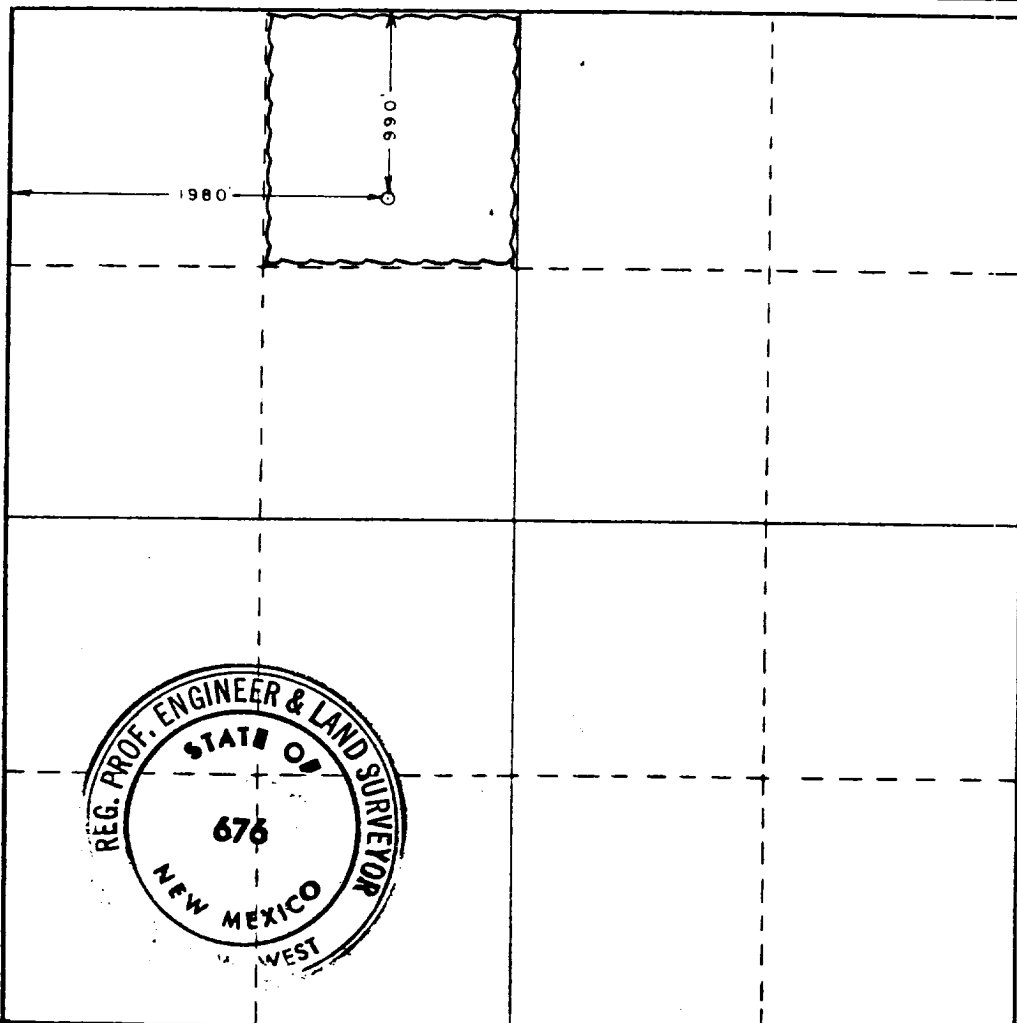
Operator Amoco Production CO.			Lease State "C" Tract 13		Well No. 10
Unit Letter C	Section 36	Township 21 South	Range 37 East	County Lea	
Actual Footage Location of Well:					
990		feet from the North	line and 1980	feet from the West	line
Ground Level Elev. 3369.3	Producing Formation Abo		Pool Wantz Abo		Dedicated Acreage: 40 Acres

1. Outline the acreage dedicated to the subject well by colored pencil or hatchure marks on the plat below.
2. If more than one lease is dedicated to the well, outline each and identify the ownership thereof (both as to working interest and royalty).
3. If more than one lease of different ownership is dedicated to the well, have the interests of all owners been consolidated by communitization, unitization, force-pooling, etc?

☐ Yes ☐ No If answer is "yes," type of consolidation _____

If answer is "no," list the owners and tract descriptions which have actually been consolidated. (Use reverse side of this form if necessary.) _____

No allowable will be assigned to the well until all interests have been consolidated (by communitization, unitization, forced-pooling, or otherwise) or until a non-standard unit, eliminating such interests, has been approved by the Commission.



CERTIFICATION

I hereby certify that the information contained herein is true and complete to the best of my knowledge and belief.

Name Charles M. Loring
Position Assist. Admin. Analyst
Company Amoco Production Company

Date May 16, 1983

I hereby certify that the well location shown on this plat was plotted from field notes of actual surveys made by me or under my supervision, and that the same is true and correct to the best of my knowledge and belief.

Date Surveyed August 19, 1978

Registered Professional Engineer and/or Land Surveyor

Ronald J. Eidson
Certificate No. John W. West 676
Ronald J. Eidson 3239





RECEIVED

MAY 17 1983

G.C.D.
HOBBES OFFICE

MEXICO OIL CONSERVATION COMMISS
WELL LOCATION AND ACREAGE DEDICATION PLAT

Form C-102
Supersedes C-128
Effective 1-4-65

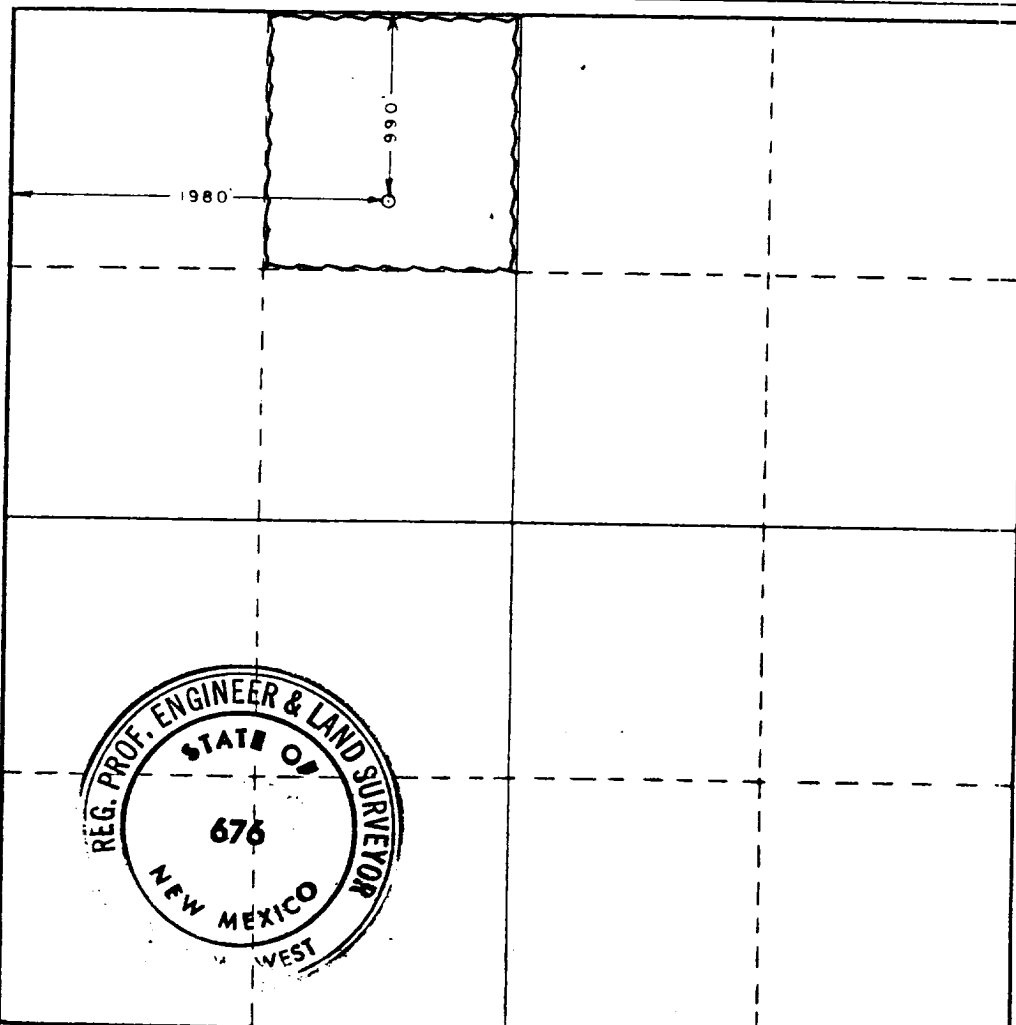
All distances must be from the outer boundaries of the Section

Operator Amoco Production CO.			Lease State "C" Tract 13		Well No. 10
Unit Letter C	Section 36	Township 21 South	Range 37 East	County Lea	
Actual Footage Location of Well: 990 feet from the North line and 1980 feet from the West line					
Ground Level Elev. 3369.3	Producing Formation Drinkard		Pool Und. Drinkard	Dedicated Acreage: 40 Acres	

1. Outline the acreage dedicated to the subject well by colored pencil or hatchure marks on the plat below.
2. If more than one lease is dedicated to the well, outline each and identify the ownership thereof (both as to working interest and royalty).
3. If more than one lease of different ownership is dedicated to the well, have the interests of all owners been consolidated by communitization, unitization, force-pooling, etc?
☐ Yes ☐ No If answer is "yes," type of consolidation _____

If answer is "no," list the owners and tract descriptions which have actually been consolidated. (Use reverse side of this form if necessary.) _____

No allowable will be assigned to the well until all interests have been consolidated (by communitization, unitization, forced-pooling, or otherwise) or until a non-standard unit, eliminating such interests, has been approved by the Commission.



CERTIFICATION

I hereby certify that the information contained herein is true and complete to the best of my knowledge and belief.

Name *Charles M. Lerrin*
Position *Assist. Admin. Analyst*
Company *Amoco Production Company*

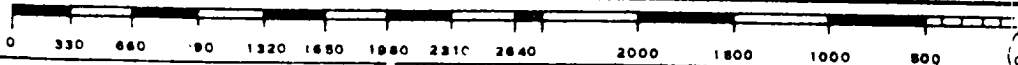
Date *May 16, 1983*

I hereby certify that the well location shown on this plat was plotted from field notes of actual surveys made by me or under my supervision, and that the same is true and correct to the best of my knowledge and belief.

Date Surveyed *August 19, 1978*

Registered Professional Engineer and/or Land Surveyor

John W. West
Certificate No. *John W. West 676*
Ronald J. Eidson 3239



RECEIVED

MAY 17 1983

O.C.B.
HOBBBS OFFICE