

NO. OF COPIES RECEIVED		
DISTRIBUTION		
SANTA FE		
FILE		
U.S.G.S.		
LAND OFFICE		
OPERATOR		

NEW MEXICO OIL CONSERVATION COMMISSION

Form C-101
Revised 1-1-65

5A. Indicate Type of Lease	
STATE <input checked="" type="checkbox"/>	FEE <input type="checkbox"/>
5. State Oil & Gas Lease No.	
B-1557	

APPLICATION FOR PERMIT TO DRILL, DEEPEN, OR PLUG BACK

1a. Type of Work		7. Unit Agreement Name	
b. Type of Well OIL WELL <input checked="" type="checkbox"/> GAS WELL <input type="checkbox"/> OTHER <input type="checkbox"/>		8. Farm or Lease Name	
DEEPEN <input type="checkbox"/> PLUG BACK <input type="checkbox"/>		State "C" Tr. 13	
SINGLE ZONE <input checked="" type="checkbox"/> MULTIPLE ZONE <input type="checkbox"/>		9. Well No.	
2. Name of Operator		10. Field and Pool, or Wildcat	
Amoco Production Company		Undesignated Granite Wash	
3. Address of Operator		11. County	
P.O. Drawer A, Levelland, Texas 79336		Lea	
4. Location of Well		12. Proposed Depth	
UNIT LETTER C LOCATED 990 FEET FROM THE north LINE		7600'	
AND 1980 FEET FROM THE west LINE OF SEC. 36 TWP. 21 RGE. 37 NMPM		13A. Formation	
		Granite Wash	
		20. Rotary or C.T.	
		Rotary	
21. Elevations (Show whether DI, RI, etc.)		21B. Drilling Contractor	
3369.3 GR		Capitan	
21A. Kind & Status Plug. Bond		22. Approx. Date Work will start	
Blanket-on file		Sept. 5, 1978	

23.

PROPOSED CASING AND CEMENT PROGRAM

SIZE OF HOLE	SIZE OF CASING	WEIGHT PER FOOT	SETTING DEPTH	SACKS OF CEMENT	EST. TOP
12 1/4"	9 5/8"	32.3 #	1300'	Circulate	Surface
8 3/4"	7"	23# & 26 #	7600'	Tie back to	Btm 9 5/8"
				9 5/8"	

Propose to drill and equip Granite Wash at 7600'. Attempt completion by perforating and stimulating as necessary.

Mud Program - 0 - 1300' - Native mud and fresh mud
1300' - TD Brine water and commercial mud in sufficient quantity to maintain safe hole conditions.

BOP Program attached.

IN ABOVE SPACE DESCRIBE PROPOSED PROGRAM; IF PROPOSAL IS TO DEEPEN OR PLUG BACK, GIVE DATA ON PRESENT PRODUCTIVE ZONE AND PROPOSED NEW PRODUCTIVE ZONE. GIVE BLOWOUT PREVENTER PROGRAM, IF ANY.

I hereby certify that the information above is true and complete to the best of my knowledge and belief.

Signed Ray W. Cox Title Adm. Supv. Date 8-30-78

(This space for State Use)

APPROVED BY [Signature] TITLE SUPERVISOR DISTRICT 1 DATE SEP 5 1978

CONDITIONS OF APPROVAL, IF ANY:

048-NMCCC-H 1-RC

1-Div

1-Susp

NEW MEXICO OIL CONSERVATION COMMISSION
WELL LOCATION AND ACREAGE DEDICATION PLAT

Form C-102
Supersedes C-128
Effective 1-1-65

All distances must be from the outer boundaries of the Section

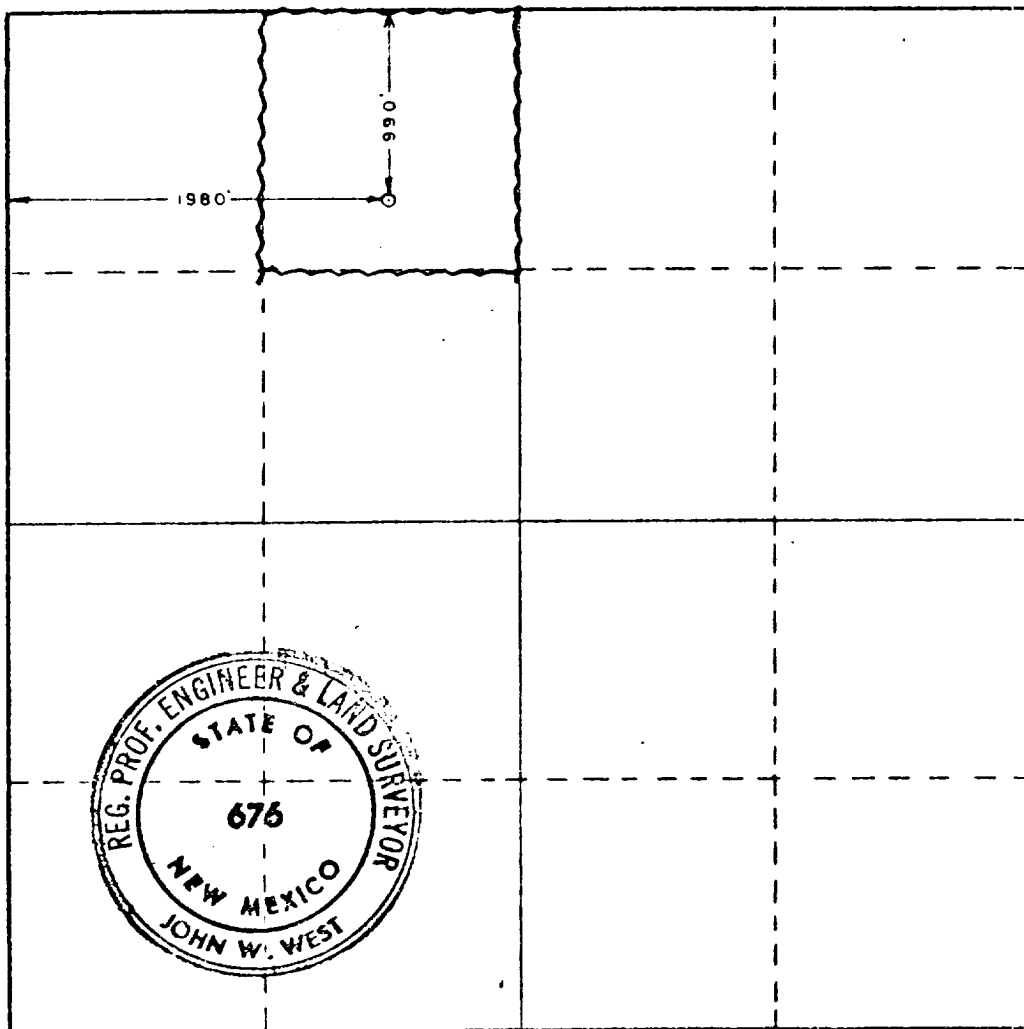
Operator Amoco Production CO.		Lease State "C" Tract 13		Well No. 10
Unit Letter C	Section 36	Township 21 South	Range 37 East	County Lea
Actual Frontage Location of Well:				
990 feet from the North line and		1980 feet from the West line		
Ground Level Elev. 3369.3	Producing Formation GRAWITE WASH	Pool UND. GRAWITE WASH	Dedicated Acreage: 40 Acres	

1. Outline the acreage dedicated to the subject well by colored pencil or hachure marks on the plat below.
2. If more than one lease is dedicated to the well, outline each and identify the ownership thereof (both as to working interest and royalty).
3. If more than one lease of different ownership is dedicated to the well, have the interests of all owners been consolidated by communitization, unitization, force-pooling, etc?

☐ Yes ☐ No If answer is "yes," type of consolidation _____

If answer is "no," list the owners and tract descriptions which have actually been consolidated. (Use reverse side of this form if necessary.) _____

No allowable will be assigned to the well until all interests have been consolidated (by communitization, unitization, forced-pooling, or otherwise) or until a non-standard unit, eliminating such interests, has been approved by the Commission.



CERTIFICATION

I hereby certify that the information contained herein is true and complete to the best of my knowledge and belief.

Ray Cox
Name
Administrative Supervisor
Position
Amoco Production Co.
Company
Aug. 30, 1978
Date

I hereby certify that the well location shown on this plat was plotted from field notes of actual surveys made by me or under my supervision, and that the same is true and correct to the best of my knowledge and belief.

Date Surveyed
August 19, 1978

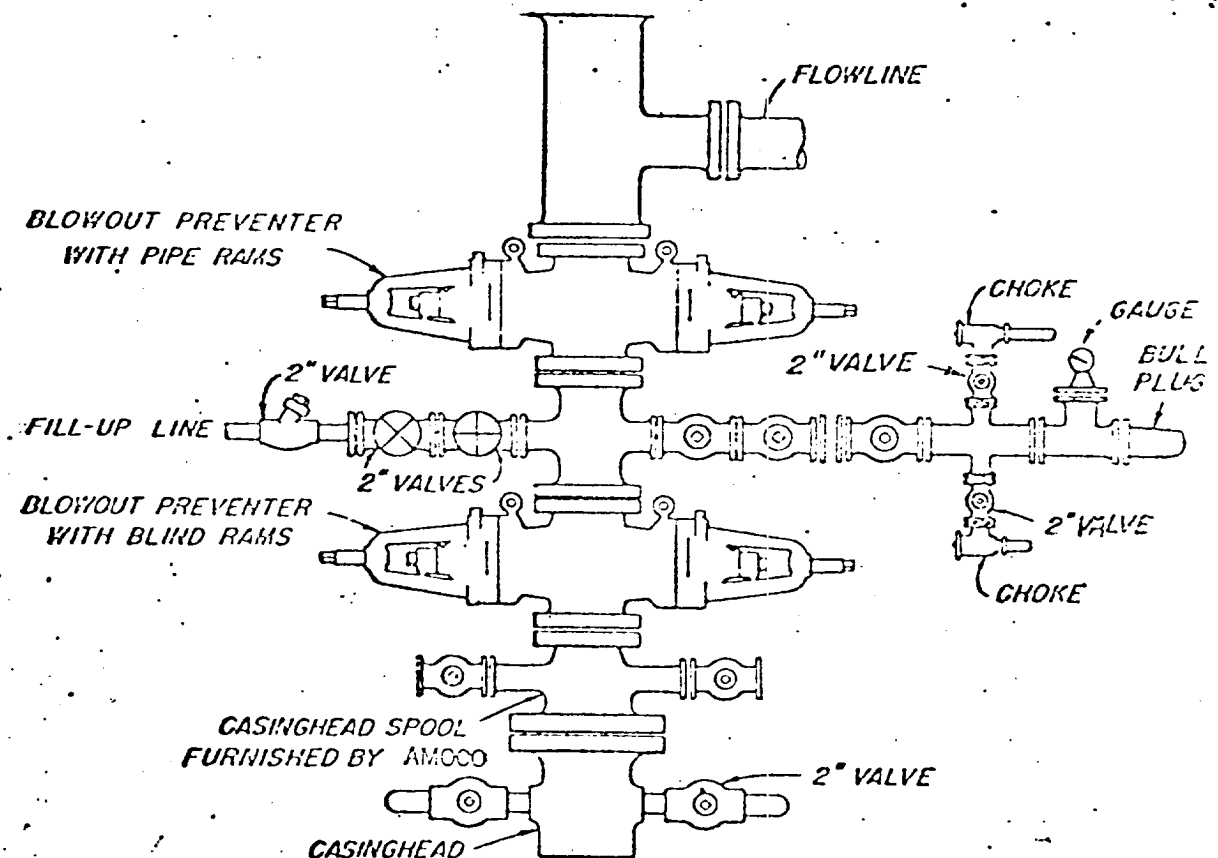
Registered Professional Engineer
and/or Land Surveyor

John W. West
Certificate No. John W. West 676
Ronald J. Eidson 3239

ATTACHMENT "B"
NOTES

1. Blow-out preventers and master valve to be fluid operated and oil fittings must be in good condition, 3,000# W.P. (6,000 p.s.i. test), minimum.
2. Equipment through which bit must pass shall be as large as the inside diameter of the casing that is being drilled through.
3. Nipple above blow-out preventer shall be same size as casing being drilled through.
4. Kelly cock required, 3,000# W.P. (6,000 p.s.i. test) minimum.
5. OMSCO or comparable safety valve must be available on rig floor at all times with proper connection or sub, 3,000# W.P. (6,000 p.s.i. test), minimum.
6. Blow-out preventers and master valve while drilling intermediate hole to 6000' may be 2,000# W.P. (4,000 p.s.i. test), minimum.
7. Choke assembly, beyond second valve from cross, may be positioned (Optional) outside of derrick foundation.
8. Spool or cross may be eliminated if connections are available in the lower part of the blow-out preventer body.
9. Plug valves - gate valves are optional. Valves shown as 2" are minimum size.
10. Casing head and casing head spool, including attached valves, to be furnished by Amoco.
11. Rams in preventers will be installed as follows:

When drilling, use:	When running casing, use:
Top Preventer - Drill pipe rams	Top Preventer - Casing rams
Bottom Preventer - Blind rams or master valve	Bottom Preventer - Blind rams or master valve



BLOWOUT PREVENTER HOOK-UP

AMOCO PRODUCTION COMPANY

EXHIBIT D-1 MODIFIED

JUNE 1, 1962