

UNITED STATES
DEPARTMENT OF THE INTERIOR
GEOLOGICAL SURVEY

APPLICATION FOR PERMIT TO DRILL, DEEPEN, OR PLUG BACK

1a. TYPE OF WORK

DRILL ☒DEEPEN ☐PLUG BACK ☐

b. TYPE OF WELL

OIL
WELL ☒GAS
WELL ☐

OTHER

SINGLE
ZONE ☐MULTIPLE
ZONE ☒

2. NAME OF OPERATOR

Continental Oil Company

3. ADDRESS OF OPERATOR

P.O. Box 460, Shaker, NM 88240

4. LOCATION OF WELL (Report location clearly and in accordance with any State requirements.)

At surface

1980' FNN and 660' FNN

At proposed prod. zone

same

14. DISTANCE IN MILES AND DIRECTION FROM NEAREST TOWN OR POST OFFICE*

15. DISTANCE FROM PROPOSED*

LOCATION TO NEAREST

PROPERTY OR LEASE LINE, FT.

(Also to nearest drlg. unit line, if any)

18. DISTANCE FROM PROPOSED LOCATION*

TO NEAREST WELL, DRILLING, COMPLETED,
OR APPLIED FOR, ON THIS LEASE, FT.

16. NO. OF ACRES IN LEASE

1920

19. PROPOSED DEPTH

6800'

17. NO. OF ACRES ASSIGNED
TO THIS WELL

40

20. ROTARY OR CABLE TOOLS

Rotary

21. ELEVATIONS (Show whether DF, RT, GR, etc.)

3555.3' GR

22. APPROX. DATE WORK WILL START*

Nov. 22, 1978

23.

PROPOSED CASING AND CEMENTING PROGRAM

SIZE OF HOLE	SIZE OF CASING	WEIGHT PER FOOT	SETTING DEPTH	QUANTITY OF CEMENT
12 1/4"	9 5/8"	32#	1600'	650 sc
8 3/4"	7"	23#, 26#	6800'	1500 sc
				CIRCULATE

It is proposed to drill a straight hole to a TD of 6800' and complete as a dual oil well in the Bluekey and Tubb zones. See attached for mud program, logging program, blowout prevention program, formation tops, etc..

DRILLING OPERATIONS AUTHORIZED ARE
SUBJECT TO COMPLIANCE WITH ATTACHED
"GENERAL REQUIREMENTS"

IN ABOVE SPACE DESCRIBE PROPOSED PROGRAM: If proposal is to deepen or plug back, give data on present productive zone and proposed new productive zone. If proposal is to drill or deepen directionally, give pertinent data on subsurface locations and measured and true vertical depths. Give blowout prevention program, if any.

24.

SIGNED

Wm. A. Butterfield

TITLE

Administrative Supervisor

DATE

10-4-78

(This space for Federal or State office use)

PERMIT NO.

APPROVAL DATE

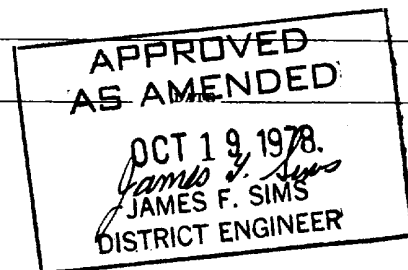
APPROVED BY

TITLE

CONDITIONS OF APPROVAL, IF ANY:

4566 [1], NMF4 [4], FILE

*See Instructions On Reverse Side



RECEIVED
JUN 24 1978
U.S. DEPARTMENT OF
COMMERCE
WASHINGTON, D.C.

ATTACHMENT TO FORM 9-331C
APPLICATION FOR PERMIT TO DRILL

Continental Oil Company
Warren Unit No. 60
T-20S, R-38E
Lea County, New Mexico

1. The geologic name of the surface formation is Quaternary Sand.
2. The estimated tops of important geologic markers are shown on the attached Proposed Well Plan.
3. The estimated depths at which anticipated water, oil, gas or other mineral-bearing formations to be encountered are shown on attached Proposed Well Plan.
4. The proposed casing program is as follows:
 - 0 - 1600' - NEW 9 5/8", 32#, H-40, ST&C
 - 0 - 5900' - NEW 7", 23#, K-55, ST&C
 - 5900' - 6800' - NEW 7", 26#, K-55, ST&C
5. A drawing of an API Series 900 Blowout Preventer Specification is attached. Pipe rams and blinds will be checked to 1,000 PSI for 30 minutes when BOP is installed. BOP will be checked when casing string is set and operated daily for checks.
6. The proposed mud program is as follows:
 - 0 - 1600' - 8.5 - 9.0# fresh water
 - 1600' - 6800' - 9.0 - 10.0# saltwater gel
7. The auxiliary equipment to be used is:
 - (1) kelly cocks
 - (2) floats at the bit
8. It is proposed to run GR CAL CNL FDC PDC logs at selected intervals, as shown on the attached Proposed Well Plan.
9. No abnormal pressures or temperatures are expected to be encountered in this well.
10. The anticipated starting date for the first well is November 22, 1978, with a duration date of approximately 21 days.

PROPOSED. WELL PLAN OUTLINE

UNIT NAME: Harren Unit No. 60

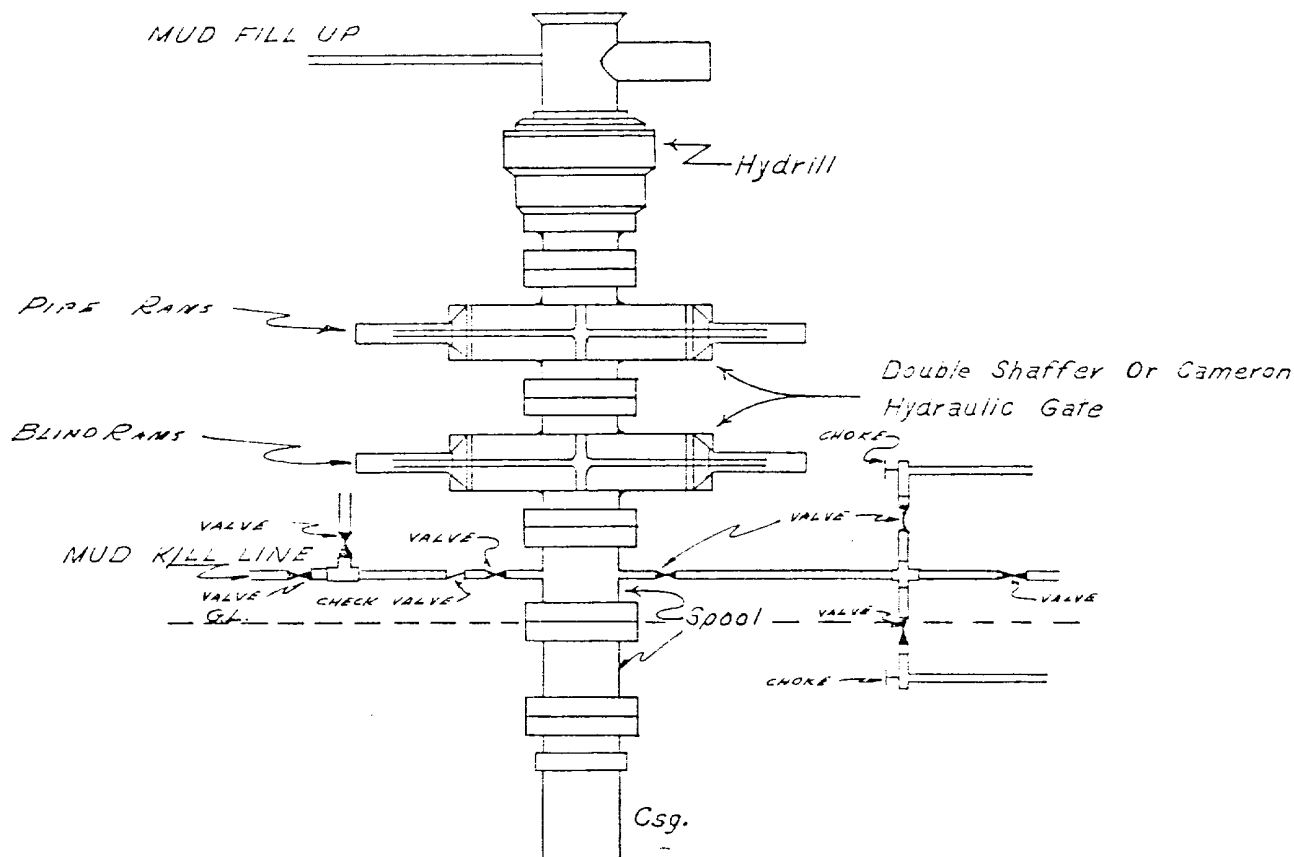
DATE: Jan

LOCATION: 1980' ENL & 660' ENL
Sec. 26, T20S, R38E

DATE: 11/22/77 New Mexico

DEPTH	FORMATION TOPS & TYPE	ELEVATION IN FEET	TYPE OF PENETRATOR OR POINTING	TIME PER FOOT	CORRECTIONS		TOTAL CORRECTION	TRUE DEPTH	WATER TEMPERATURE
					FATHOM	METER			
	Water SS.	80-	150						
1000	Rustler Anhy. Salado Salt	1550 1640		12 1/4	9 5/8	1600'			8.5- 9.0
2000	Base Salt Yates SS.	2700 2830	-						
3000	Seven Rivers dol.	3100							
4000	San Andres dol.	4230							
5000	Glorietta SS.	5520							
6000	Blinebry Mkr. dol.	5970	GR-CNL-FDC DLL TD-2600'						
7000	Tubb dol. Drinkard dol. TD 6800	6580 6730		8 3/4	7"	6800'	15.5	Less Than 8.5	9.0-10.0

CONTINENTAL OIL COMPANY
Blow-out Preventer Specifications



NOTE:

API SERIES 900

Manual and Hydraulic controls with closing unit no less than 75' from well head.
Remote controls on rig floor.

DUE TO SUBSTRUCTURE CLEARANCE,
HYDRILL MAY OR MAY NOT BE USED.

NEW MEXICO OIL CONSERVATION COMMISSION
WELL LOCATION AND ACREAGE DEDICATION PLAT

Form C-102
Supersedes C-128
Effective 1-1-65

All distances must be from the outer boundaries of the Section.

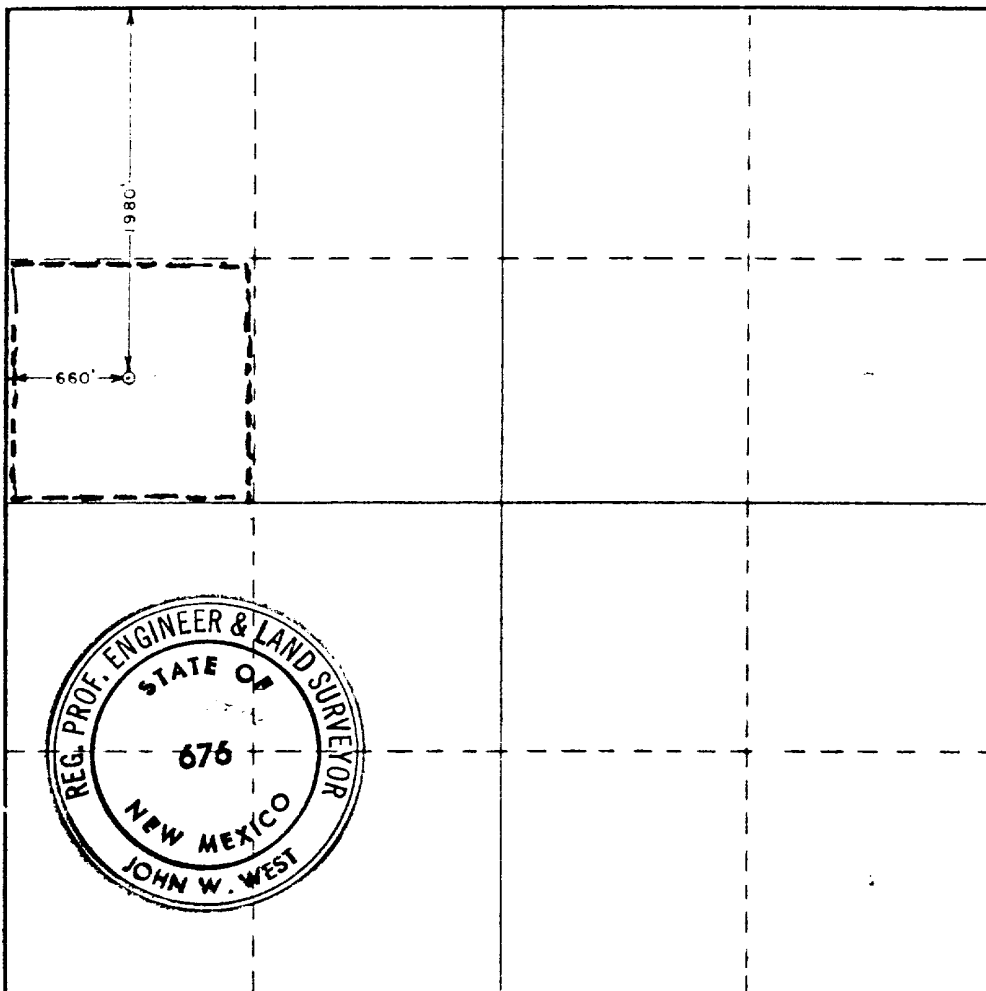
Operator Continental Oil Co.		Lease Warren Unit		Well No. 60
Unit Letter E	Section 26	Township 20 South	Range 38 East	County Lea
Actual Footage Location of Well: 1980 feet from the North line and 660 feet from the West line				
Ground Level Elev. 3555.3	Producing Formations BLINDERY; TURB	Pool WARREN	Dedicated Acreage: 40 Acres	

1. Outline the acreage dedicated to the subject well by colored pencil or hachure marks on the plat below.
2. If more than one lease is dedicated to the well, outline each and identify the ownership thereof (both as to working interest and royalty).
3. If more than one lease of different ownership is dedicated to the well, have the interests of all owners been consolidated by communitization, unitization, force-pooling, etc?

☐ Yes ☐ No If answer is "yes," type of consolidation _____

If answer is "no," list the owners and tract descriptions which have actually been consolidated. (Use reverse side of this form if necessary.) _____

No allowable will be assigned to the well until all interests have been consolidated (by communitization, unitization, forced-pooling, or otherwise) or until a non-standard unit, eliminating such interests, has been approved by the Commission.



CERTIFICATION

I hereby certify that the information contained herein is true and complete to the best of my knowledge and belief.

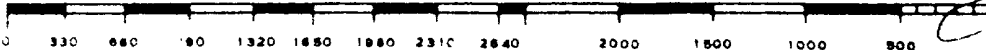
Name
Wm. A. Butterfield
Position
Administrative Supervisor
Company
Continental Oil Company
Date
October 4, 1978

I hereby certify that the well location shown on this plat was plotted from field notes of actual surveys made by me or under my supervision, and that the same is true and correct to the best of my knowledge and belief.

Date Surveyed
September 14, 1978

Registered Professional Engineer and/or Land Surveyor

John W. West
Certificate No. **John W. West 676**
Ronald J. Eidson 3239



RECEIVED
OCT 24 1978
CALIFORNIA CONSERVATION COMM.
HONOLULU, HI

SURFACE USE PLAN
Continental Oil Company
Warren Unit No. 60
T-20S, R-38E
Lea County, New Mexico

The plan is to accompany "Application for Permit to Drill" the subject well. The following is a discussion of pertinent information concerning possible effect which the proposed drilling of the well may have on the environment of the well and road sites and surrounding acreage. A copy will be posted on the derrick floor so that all contractors and sub-contractors will be aware of all items of this plan.

1. Existing Roads

- A. The proposed well site is 1980' FNL and 660' FWL of Section 26, T-20S, R-38E, Lea County, New Mexico.
- B. Exhibit "A" is a portion of a New Mexico road map showing existing black top roads. Directions to the location (outlined in red on map) are as follows: Travel 9.6 miles south of Hobbs on N.M. 18 and turn east 200 yards to Warren Unit No. 44. The proposed location is 0.75 mile north.
- C,D,E. Access roads are shown on Exhibits "B" and "C".
- F. No improvement or maintenance is anticipated for the existing roads.

2. Planned Access Roads

- A. Width any length: New road required will be 12' wide and .075 mile long. This new road is labeled and coded on Exhibits "B" and "C". (staked)
- B. Turnouts: one
- C. Drainage Design: New road will have a drop of 6" from center line on each side.
- D. Culverts, Cuts and Fills: none
- E. Surfacing Material: Six inches of caliche, bladed, watered, and compacted.
- F. Gates, Cattleguards, Fences: See attached Exhibit "C"
- G. The proposed road is staked.

3. Location of Existing Wells

See Exhibit "C"

4. Location of Existing and/or Proposed Facilities

- A. Tank Batteries: An Adobe Oil Company tank battery is located 0.375 mile north of the proposed location. See attached Exhibit "C".

B. Producing Facilities:

No additional facilities required. See Exhibit "C"

C. Oil Gathering Lines:

The proposed flowlines will lay not buried along side the proposed road.

D. Rehabilitation:

Pits will be backfilled and leveled as soon as practical to original condition. Commencement of rehabilitation operations will immediately follow removal of drilling and completion equipment from location. Rehabilitation of the surface is planned to be completed within 45 days from commencement.

5. Water Supply

Fresh and brine water will be hauled from Eunice, New Mexico.

6. Source of Construction Materials

A. Caliche will be hauled from an existing pit in SE/SE, Section 15, T-20S, R-38E.

B. Caliche will be purchased from Earl Kornegay.

7. Methods for Handling Waste Disposal

Waste Disposal: Well cuttings will be disposed in reserve pit. Barrel trash containers to be in accessible locations within drill site area during drilling and completion procedures. All detrimental waste will be hauled away, burned or buried with a minimum cover of 24" of dirt. See Exhibit "D" for location of pits. If well is productive, maintenance waste will be placed in special trash cans and hauled away periodically. Any produced water will be collected in tanks until hauled to an approved disposal system, or separate disposal applications will be submitted to the survey for appropriate approval.

8. Ancillary Facilities

None

9. Well Site Layout

Exhibit "D" shows the relative location and dimensions of the well pad, mud pit, reserve pit, etc. The reserve pit will be lined with plastic. The pad and pits are staked.

10. Plans for Restoration of Surface

Pits will be backfilled and leveled as soon as practical to original condition. Commencement of rehabilitation operations will immediately follow removal of drilling and completion equipment from location and rehabilitation of the surface is planned to be completed within 45 days from commencement.

11. Other Information

- A. Terrain: smooth sand hills
- B. Soil: sandy
- C. Vegetation: Shinnery, sparse
- D. Surface Use: grazing
- E. Ponds and Streams: none within one mile
- F. Water Wells: none within one mile
- G. Residences and Building: none within one mile
- H. Arroyos, Canyons, Etc.: Monument Draw is approximately 4 miles SW of location.
- I. Well Sign: sign identifying and locating well will be maintained at drill site with the spudding of the well.
- J. Open pits: All pits containing mud or other liquids will be fenced.
- K. Archaeological Resources: none observed

12. Operator's Representative

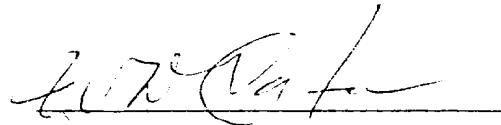
Field personnel who can be contacted concerning compliance of this Surface Use Plan are as follows:

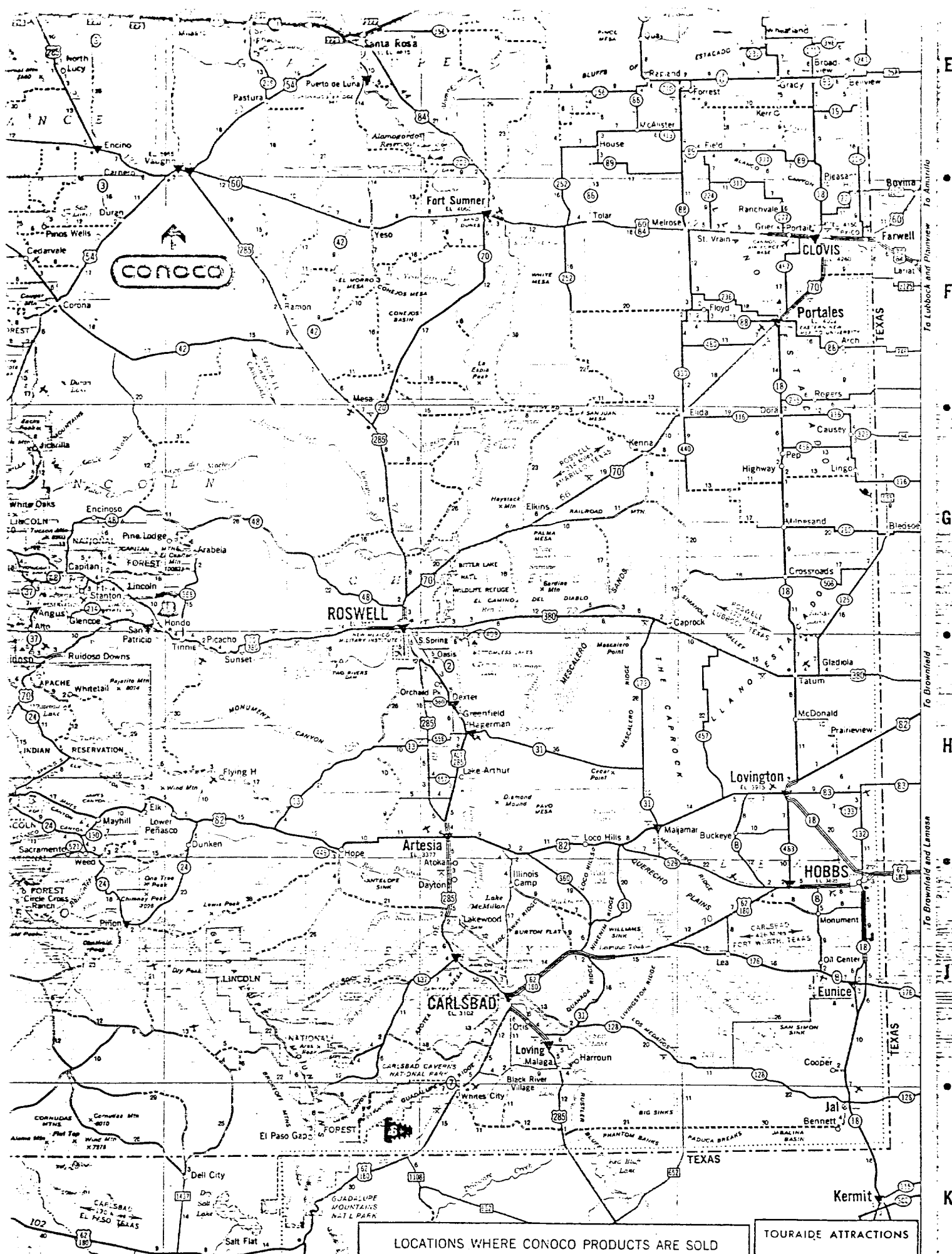
Production and Drilling
W. D. Cates or H. C. Pokrandt
1001 North Turner
Hobbs, New Mexico 88240
Phone: 393-4141

13. Certification

I hereby certify that I, or persons under my direct supervision, have inspected the proposed drill site and access route; that I am familiar with the conditions which presently exist; that the statements made in this plan are, to the best of my knowledge, true and correct; and that the work associated with the operations proposed herein will be performed by Continental Oil Company and its contractors and sub-contractors in conformity with this plan and the terms and conditions under which it is approved.

DATE





1	San Mateo	C-4	San Mateo	C-4	San Mateo	C-4
2	San Jose	C-8	San Jose	C-8	San Jose	C-8
3	San Juan	C-3	San Juan	C-3	San Juan	C-3
4	San Juan	C-2	San Juan	C-2	San Juan	C-2
5	San Juan	C-1	San Juan	C-1	San Juan	C-1
6	San Juan	C-1	San Juan	C-1	San Juan	C-1
7	San Juan	C-1	San Juan	C-1	San Juan	C-1
8	San Juan	C-1	San Juan	C-1	San Juan	C-1
9	San Juan	C-1	San Juan	C-1	San Juan	C-1
10	San Juan	C-1	San Juan	C-1	San Juan	C-1
11	San Juan	C-1	San Juan	C-1	San Juan	C-1
12	San Juan	C-1	San Juan	C-1	San Juan	C-1
13	San Juan	C-1	San Juan	C-1	San Juan	C-1
14	San Juan	C-1	San Juan	C-1	San Juan	C-1
15	San Juan	C-1	San Juan	C-1	San Juan	C-1
16	San Juan	C-1	San Juan	C-1	San Juan	C-1
17	San Juan	C-1	San Juan	C-1	San Juan	C-1
18	San Juan	C-1	San Juan	C-1	San Juan	C-1
19	San Juan	C-1	San Juan	C-1	San Juan	C-1
20	San Juan	C-1	San Juan	C-1	San Juan	C-1
21	San Juan	C-1	San Juan	C-1	San Juan	C-1
22	San Juan	C-1	San Juan	C-1	San Juan	C-1
23	San Juan	C-1	San Juan	C-1	San Juan	C-1
24	San Juan	C-1	San Juan	C-1	San Juan	C-1
25	San Juan	C-1	San Juan	C-1	San Juan	C-1

LOCATIONS WHERE CONOCO PRODUCTS ARE SOLD

▼ Locations on Interstate Highways, toll roads or major limited access highways where CONOCO PRODUCTS are sold.

▼ Locations of CONOCO Travel Shoppes.

▼ Locations where CONOCO DEALERS provide Trailer Travelers with Sanitary Disposal Facilities. Look for this sign:

conoco

TRAILER DISPOSAL

TOURAIDE ATTRACTIONS

HISTORICAL

SCENIC

GENERAL

Attraction points described on reverse side

NEW MEXICO

SCALE OF MILES

0 5 10 20 30 40

ONE INCH EQUALS APPROXIMATELY 21.6 MILES

HIGHWAY MARKERS

INTERSTATE UNITED STATES STATE TEXAS FARM OR RANCH

ROAD CLASSIFICATIONS

CONTROLLED ACCESS DIVIDED HIGHWAYS

Interchange

OTHER DIVIDED HIGHWAYS

MILEAGES

MILEAGE BETWEEN TOWNS AND JUNCTIONS

MILEAGE BETWEEN DOTS

LONG DISTANCE MILEAGES SHOWN IN RED

SPECIAL FEATURES

STATE PARKS Without Campsites

RECREATION AREAS Without Campsites

PORTS OF ENTRY Insure Locally

POINTS OF INTEREST

POPULATION SYMBOLS

State Capital 2,500 to 5,000 25,000 to 50,000

SCHEDULED AIRLINE STOPS

MILITARY AIRPORTS

OTHER AIRPORTS

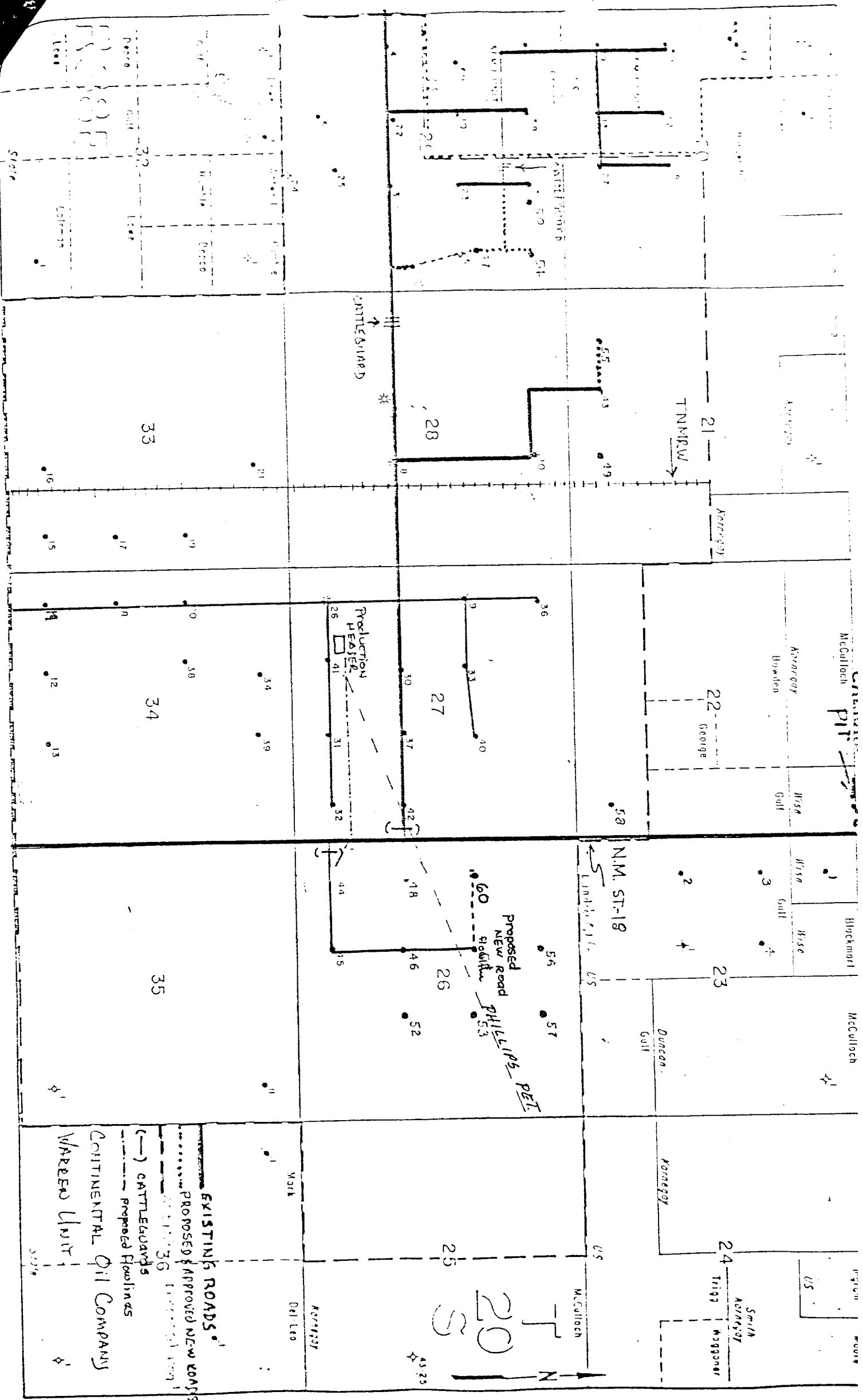
TOURIST INFORMATION

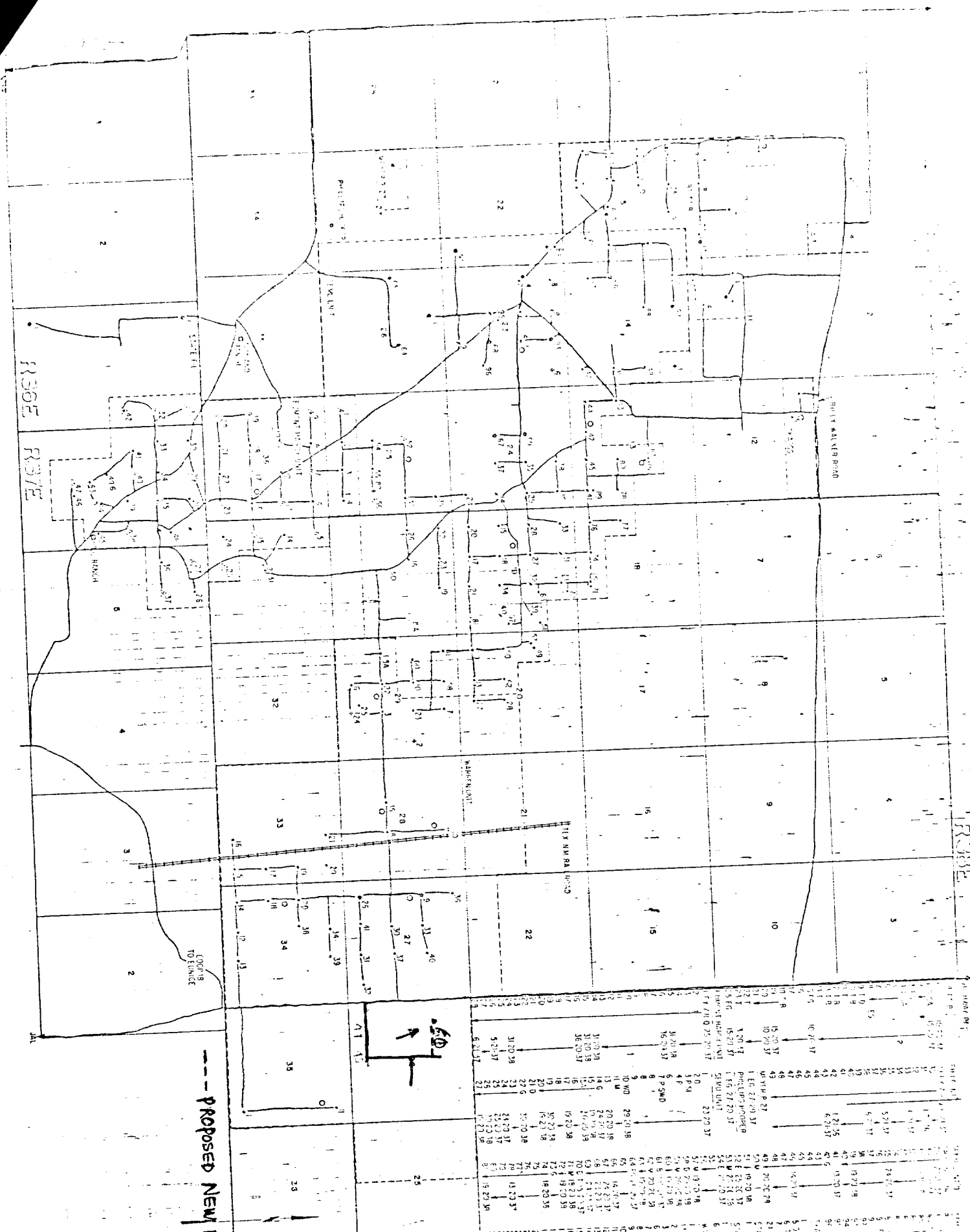
SKI AREAS

SELECTED REST AREAS

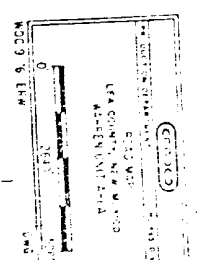
BOAT RAMPS

TIME ZONE BOUNDARY



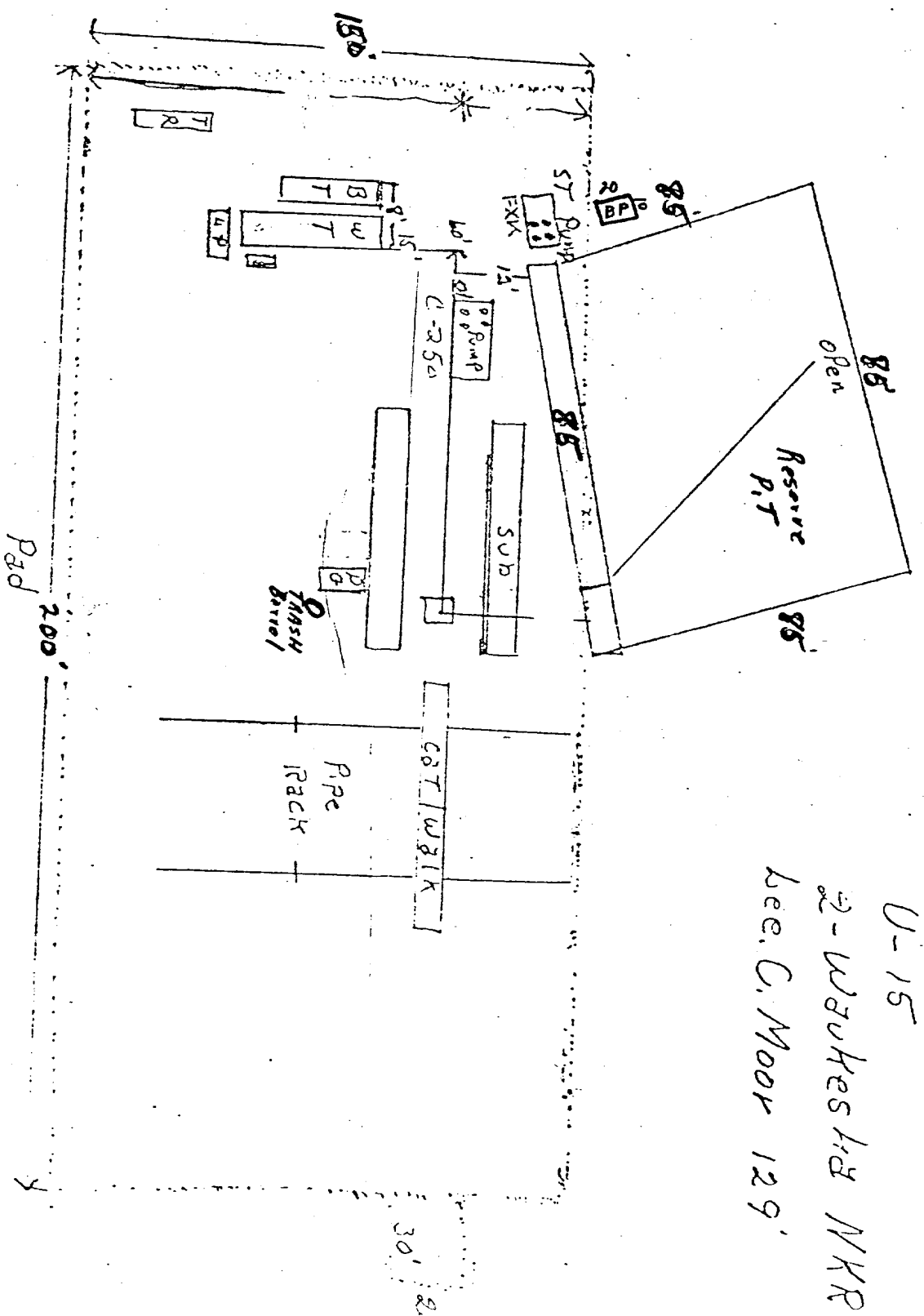


--- PROPOSED NEW ROAD & Pipeline



1. AIR FORCE
 2. AIR FORCE
 3. AIR FORCE
 4. AIR FORCE
 5. AIR FORCE
 6. AIR FORCE
 7. AIR FORCE
 8. AIR FORCE
 9. AIR FORCE
 10. AIR FORCE
 11. AIR FORCE
 12. AIR FORCE
 13. AIR FORCE
 14. AIR FORCE
 15. AIR FORCE
 16. AIR FORCE
 17. AIR FORCE
 18. AIR FORCE
 19. AIR FORCE
 20. AIR FORCE
 21. AIR FORCE
 22. AIR FORCE
 23. AIR FORCE
 24. AIR FORCE
 25. AIR FORCE
 26. AIR FORCE
 27. AIR FORCE
 28. AIR FORCE
 29. AIR FORCE
 30. AIR FORCE
 31. AIR FORCE
 32. AIR FORCE
 33. AIR FORCE
 34. AIR FORCE
 35. AIR FORCE
 36. AIR FORCE
 37. AIR FORCE
 38. AIR FORCE
 39. AIR FORCE
 40. AIR FORCE
 41. AIR FORCE
 42. AIR FORCE
 43. AIR FORCE
 44. AIR FORCE
 45. AIR FORCE
 46. AIR FORCE
 47. AIR FORCE
 48. AIR FORCE
 49. AIR FORCE
 50. AIR FORCE
 51. AIR FORCE
 52. AIR FORCE
 53. AIR FORCE
 54. AIR FORCE
 55. AIR FORCE
 56. AIR FORCE
 57. AIR FORCE
 58. AIR FORCE
 59. AIR FORCE
 60. AIR FORCE
 61. AIR FORCE
 62. AIR FORCE
 63. AIR FORCE
 64. AIR FORCE
 65. AIR FORCE
 66. AIR FORCE
 67. AIR FORCE
 68. AIR FORCE
 69. AIR FORCE
 70. AIR FORCE
 71. AIR FORCE
 72. AIR FORCE
 73. AIR FORCE
 74. AIR FORCE
 75. AIR FORCE
 76. AIR FORCE
 77. AIR FORCE
 78. AIR FORCE
 79. AIR FORCE
 80. AIR FORCE
 81. AIR FORCE
 82. AIR FORCE
 83. AIR FORCE
 84. AIR FORCE
 85. AIR FORCE
 86. AIR FORCE
 87. AIR FORCE
 88. AIR FORCE
 89. AIR FORCE
 90. AIR FORCE
 91. AIR FORCE
 92. AIR FORCE
 93. AIR FORCE
 94. AIR FORCE
 95. AIR FORCE
 96. AIR FORCE
 97. AIR FORCE
 98. AIR FORCE
 99. AIR FORCE
 100. AIR FORCE

Hondo Rig #1
 U-15
 2-Waterkes L&S NHR
 Lee. C. Moor 129'



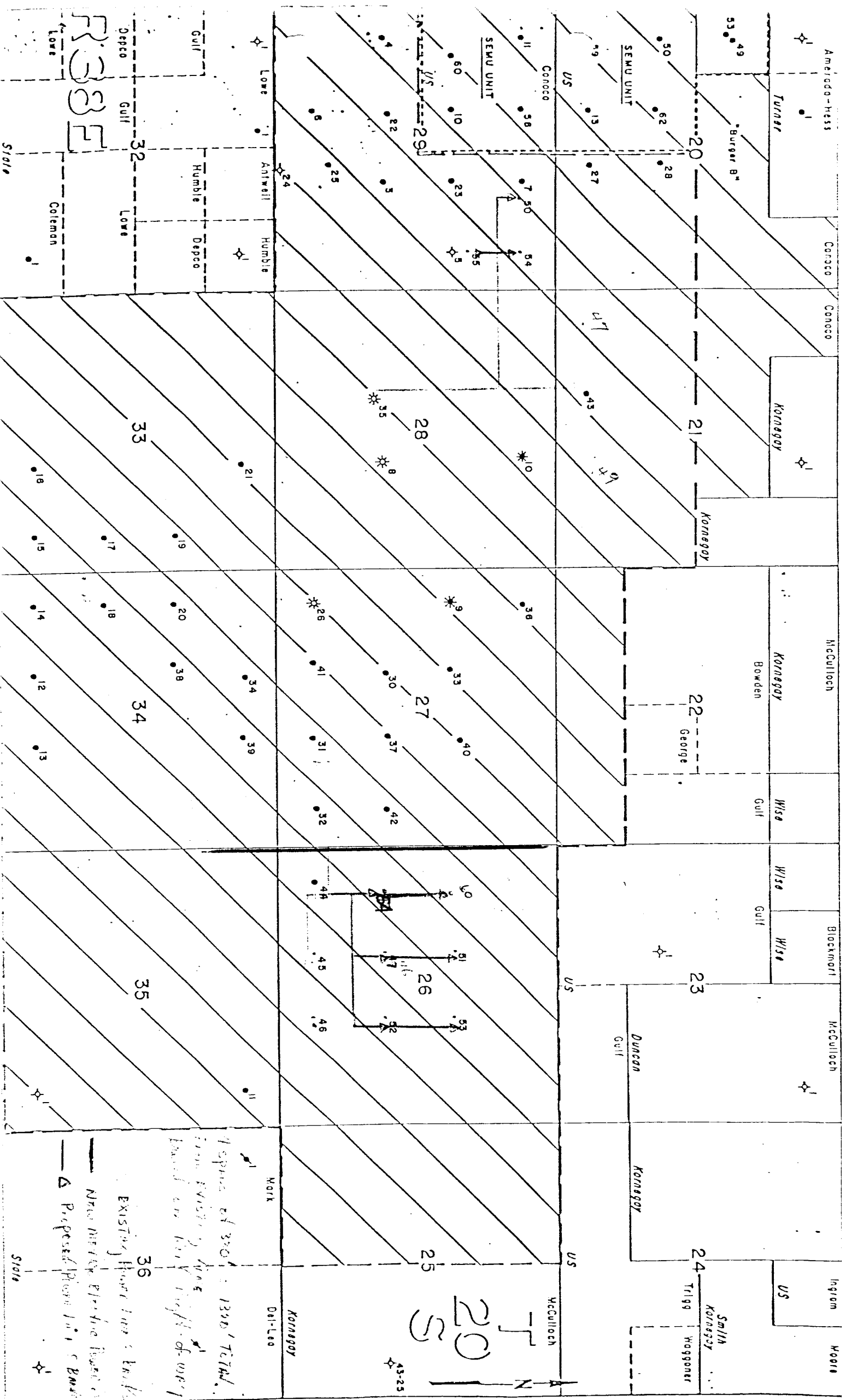
CONTINENTS / OIL CO.

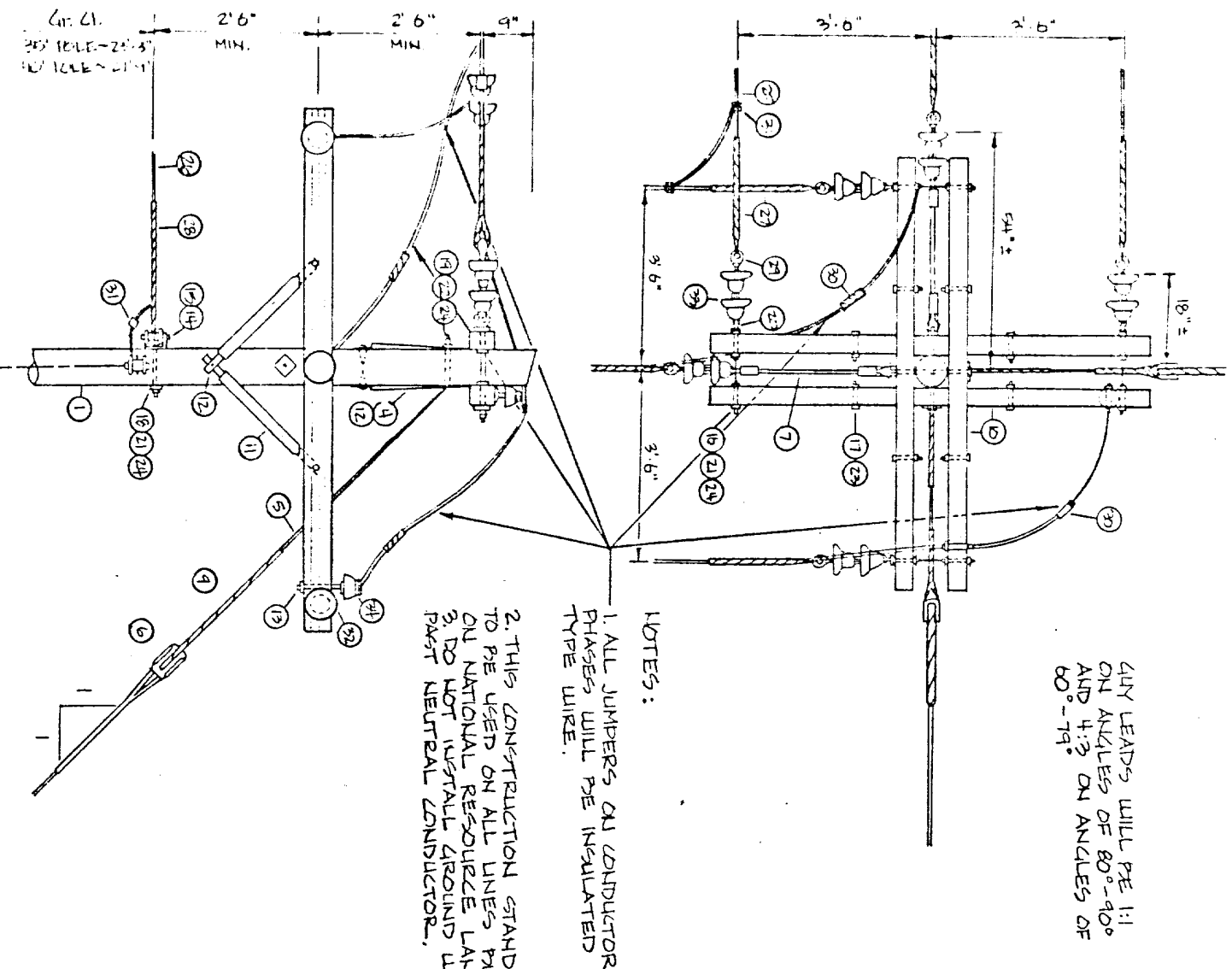
EXHIBIT D

Continental Oil Company
Warren Unit No. 60
Power Distribution

A plot is attached showing the proposed well location, existing roads, proposed road, existing power lines, proposed power line, also drawings of the pole design.

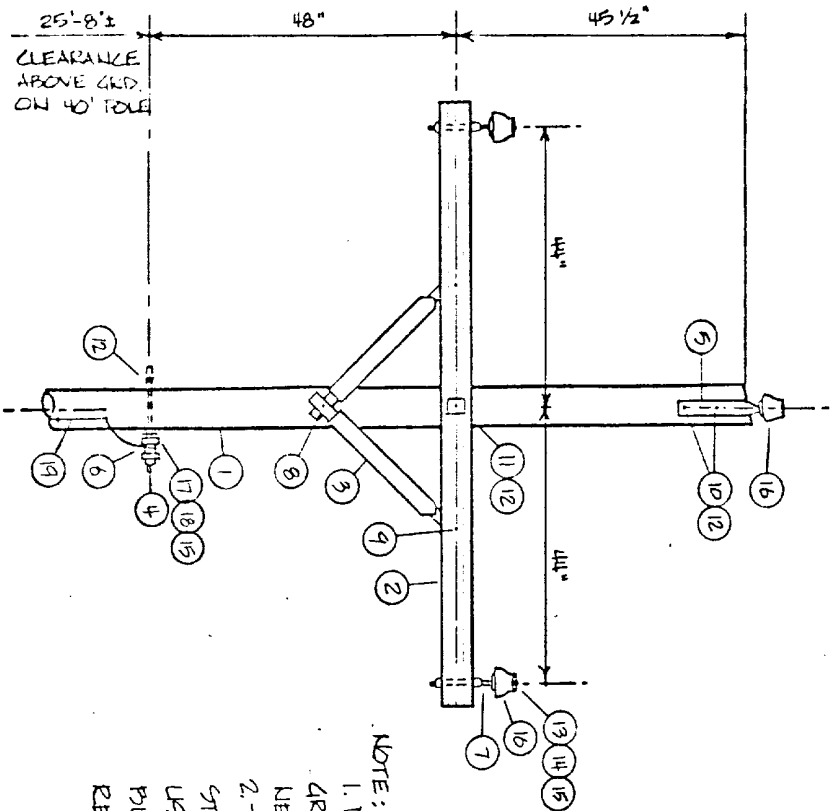
It is proposed to tie in to an existing primary line at approved location Well No. 54 and construct 1320' of primary line with a transformer bank at the well site. The new line will be constructed on the right side of the road at 330' per span. The proposed line is staked.





MATERIALS		
ITEM	DESCRIPTION	QTY
1	POLE	1
2	ANCHOR 8" LENGTH, CLASS 1	2
3	ANCHOR 8" 5/8" x 7"	2
4	GUY ATTACHMENT PLATE	2
5	GUY CAPSULE, 3/8" U.G.	24*
6	GUY INSULATOR, 500	2
7	EROSY INSULATOR, KEARNEY # 323015-24	2
8	CLAMP, 3-PHASE	2
9	GUY CLIP 3/8"	6
10	CROSS ARM, 8"	4
11	PLATE, 3/8" SPA.	8
12	LAD SCREW, 1/2"	8
13	STEEL PIN 5/8" x 5"	2
14	RAIL, 1-POINT	2
15	SPRINT INSULATOR, 3"	2
16	POLT, D.A., 5/8" x 10"	6
17	POLT, MACH., 3/8" x 11 1/2"	8
18	POLT, MACH., 5/8" x 10"	2
19	POLT, MACH., 5/8" x 12"	2
20	EYE NUT, 5/8"	6
21	WASHER, 2 1/4" FLAT	22
22	WASHER, 3" CURVED	2
23	LOCK NUT, 3/8"	8
24	LOCK NUT, 5/8"	10
25	PHASE CONDUCTOR NO.	—
26	NEUTRAL CONDUCTOR NO.	—
27	PREF. DE. NO.	5
28	CLEVIS, THIMBLE	2
29	JUMPER SLEEVE, NO.	6
30	CONNECTOR, 5.0. S.M.L. AL.	2
31	INSULATOR, 4KV PIN	2
32	INSULATOR, 6" DISC	2
33	INSULATOR, 6" DISC	12
34	TIE WIRE, NO. 6 AL.	1/2*

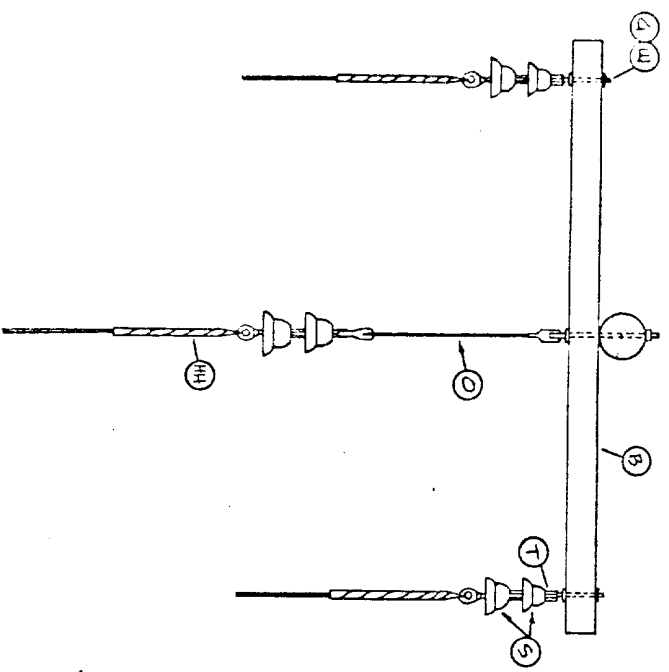
DATE: 7-15-77	TITLE: PRIMARY ANGLE STRUCTURE 60°-90° 12,500 VOLT AIR
DRAWN BY: J. Morrill	
DESIGN BY:	
CHECKED BY: SK.	
APPROVED BY: SK.	
SCALE: NONE	
PRODUCTION DEPT.	HOBS DIVISION
JOB:	DRAWING NO.:
ELEC. SPECS.	ES-27



NOTE:
 1. DO NOT INSTALL
 GROUND WIRE PAST
 NEUTRAL CONDUCTOR
 2. THIS CONSTRUCTION
 STANDARD TO BE
 USED ON ALL LINES
 BUILT ON NATIONAL
 RESOURCE LANDS

MATERIALS				
ITEM	DESCRIPTION	REQ'D	ITEM	DESCRIPTION
1	POLE, 40'	1	17	NEUTRAL CONDUCTOR
2	CROSSARM, 3/2"x4 1/2"x8'	1	18	ARMOR ROD
3	BRACE, WOOD	2	19	POLE GROUND WIRE, #6 CU.
4	STUD BALK	1		
5	RIDGE PIN, 1 1/2"	1		
6	STEEL INSULATOR	1		
7	STEEL PIN, 3/8"x5"	2		
8	LVA SCREW, 1/2"x4"	1		
9	CARABAGE BOLT, 3/8"x4 1/2"	2		
10	MACHINE BOLT, 3/8"x10"	2		
11	MACHINE BOLT, 3/8"x4"	1		
12	WASHER, 2 1/2" SQ.	5		
13	PHASE CONDUCTOR	-		
14	ARMOR ROD	3		
15	TIE WIRE, #6 AL.	1#		
16	PIN INSULATOR, 9 KV	3		

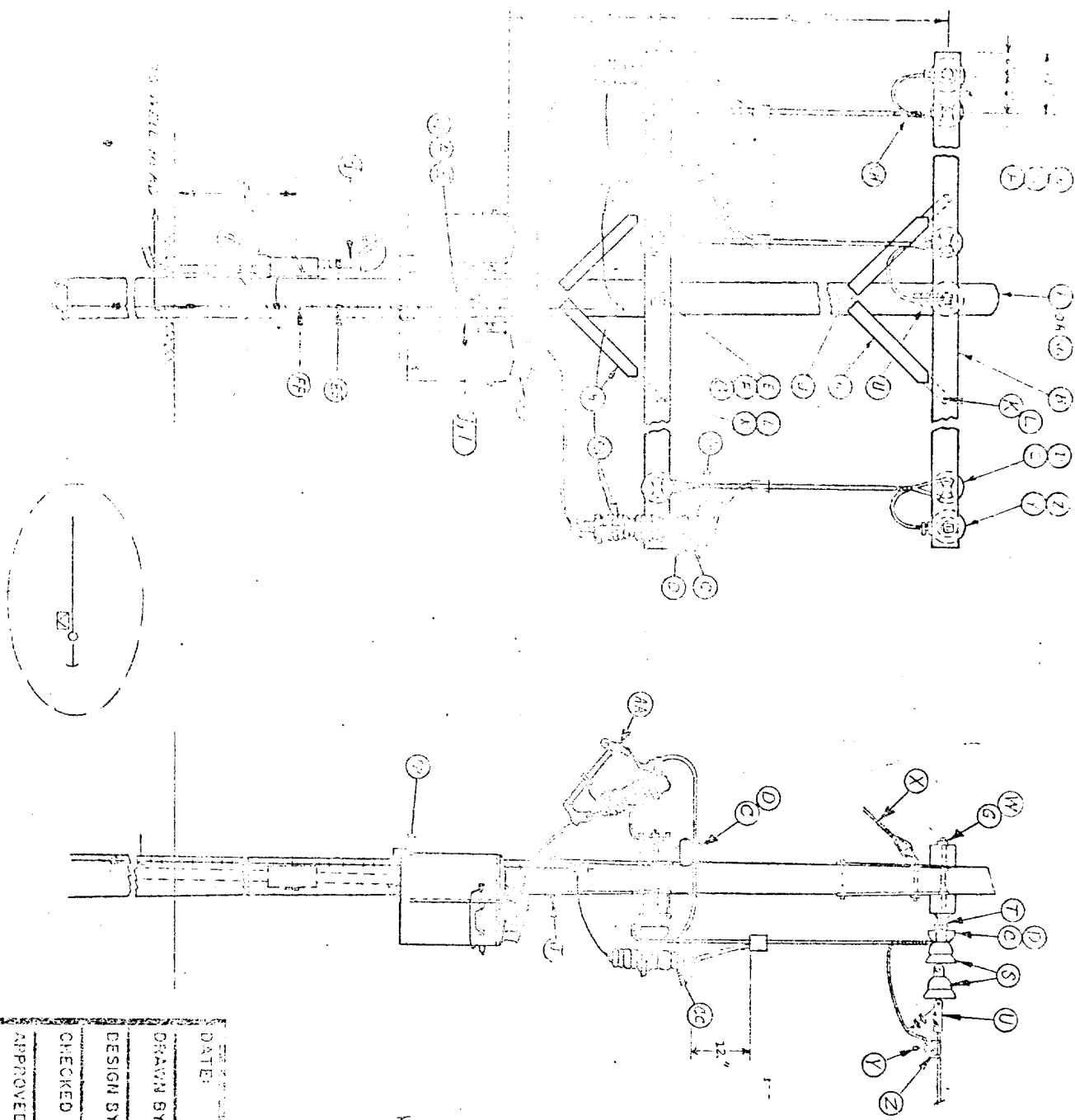
DATE: 7-15-11	TITLE: PRIMARY IN LINE POLE 12,500 VOLT AC&R
DRAWN BY: J. Morrill	<div style="text-align: center;"> CONOCO </div> HOBBS DIVISION DRAWING NO.: ELEL. SPECS.
DESIGN BY:	
CHECKED BY: SK	
APPROVED BY: SK	
SCALE: NONE	JOB: ELEC. SPECS.



ITEM	QTY. REQ'D
B	1
C	3
HH	3
O	1
S	6
T	2
W	3

NOTE:
FOR MATERIALS, SEE
DRUGS, ES-1

DATE: 7-15-77	TITLE: EPOXY INSULATOR (EXTENSION LINK)
DRAWN BY: J. mortill	
DESIGN BY:	
CHECKED BY: SK	
APPROVED BY: SK	
SCALE: 1/8" = 1"	
PRODUCTION DEPT.	HOBBBS DIVISION
JOB:	DRAWING NO.:
ELEC. SPECS.	ES-28



ITEM	QTY	UNIT
A	4	
B	3	
C	3	
D	3	
E	3	
F	24	
G	12	
H	8	
J	4	
K	8	
L	3	
FLG	1	ES-M, NOTE 5
S	6	
T	3	
U	3	
W	5	
X	1	
Y	3	
Z	3	
AG	3	
CG	3	
EG	3	
FG	1	
HG	4	
IG	1	
JL	1	ES-M, NOTE 2
KL	1	
ML	3	
OL	5	

NOTE:
 1. CENTER PHASE ON BANK WILL HAVE
 EFGY INSULATOR, KEARNEY = 32305-24
 INS. (REF. REFER TO DRUG. ES-22)
 2. ALL WIRE FROM POINT "U" WILL BE
 INSULATED TYPE WIRE ON TRANSMISSION
 BANK.

DATE:	12-13-71	TITLE:	12-13-71
DRAWN BY:	AKD	1 PM. TRANS. 12-13-71	
DESIGN BY:	AKD	PRIM. DEAD-END-12300/480V 400	
CHECKED BY:		PRODUCTION DEPT.	
APPROVED BY:		JOB:	
SCALE:	NONE	ES-9	

ITEM	DESCRIPTION	A. B. QUANTITY NO.	JOSLYN NO.	OTHER MFRS. NO.	NO. SUB.
A	20' class 6 creosoted pine pole				
B	3 1/2" x 4 1/2" x 8' treated crossarm				
C	3/8" diameter wet process porcelain pin insulator		663		
D	5/8" x 3" forged steel pin w/sq. washer, nut, & locknut	881			
E	5/8" x 12" machine bolt w/ nut (or length req'd)	881/2			
F	2 1/4" x 2 1/4" x 3/16" x 11/16" hole sq. washer	681/3			
G	5/8" sq. locknut	351/2			
H	1/4" x 1 1/4" x 28" flat crossarm brace	712/4			
I	1/2" x 4" x 1/2" letter drive top screw	50-754			
J	3/8" x 4 1/2" carriage bolt w/ nut	8634/2			
K	3/8" sq. locknut	351/0			
L	preford Aluminum Alloy Armor rods, size req'd				
M	tie wire #3 strong alum. alloy				
N	Energy Insulator (Extension Link)			KEARNEY #92102540	X
O	3" class 5 creosoted pine pole				
P	Aluminum double tab Squeeze on connector			KEARNEY SERIES "81"	X
Q	4" x 4" Aluminum, or copper-size req'd	66200			
R	6" crossarm insulator	6502			
S	5/8" Standard Oval Eye Nut		44050		
T	Primary Dead End Clamp				
W	5/8" x 18" (or length req'd) Double Armring Bolt w/4 sq. nuts	8868			
X	guying detail - see dwg No. 85-10 for specs.				
Y	1st line clamp	5152046P			
Z	connector on basket, size required			KEARNEY	X

DATE: 12-27-71	TITLE: DESCRIPTION MATERIALS
DRAWN BY: E. WINTER	
DESIGN BY:	
CHECKED BY:	
APPROVED BY:	
SCALE: NONE	
PRODUCTION DEPT. HOBS DIVISION	
JOB: ELEC SPECS	DRAWING NO: ES-1
	SHEET 1 OF 3

ITEM	DESCRIPTION	A. B. CHANCE NO.	JOSLYN NO.	OTHER MFRS. NO.	NO SUB.
1A	TRITARY OUTLINE - 100 amp, 15 KV, 16000 amp int. amp.	F2XX10156			X
1B	General purpose 1/2" bolt clamp	UC510AGP			
1C	1/2" bolt, 1/2" nut, 10 KV				
1D	Single phase oil switch, 14.4 KV			HGPAU-EDISON KMKC2 BLACK BURN H SERIES	
1E	split bolt connector, size req'd				
1F	grounding specs. see dwg No. BS-11 & BS-1A, Note 3				
1G	351 class 6 creosoted pine pole				
1H	Aluminum deadend preforms for ACSR, size req'd				
1I	301 class 6 creosoted pine pole				
1J	60000 amp, 15 KV ACSR - 14 Req'd - Ref. Dwg BS-11, Note 3				
1K	ground connector, motor			HURNDY KC-22	X
1L	600 V, secondary lightning arrestor single phase				
1M	Greenfield type of liquid-tight flexible steel conduit, size req'd, w/ necessary liquid-tight connectors.				
1N	rod size 1/2" fitting & cover & basket				
1O	transformer tank grounding terminal	GWS-15			
1P	112 boards (insulating feet on transformer bushings)			URSTIN HOUSE 2114 1/2" x 8 1/2"	

DATE:	12-27-71	TITLE:	DESCRIPTION MATERIAL
DRAWN BY:	E. HUNTER	PRODUCTION DEPT.	GOOGOOD
DESIGN BY:		HOEBS DIVISION	
CHECKED BY:		JOB:	FILED SPECS
APPROVED BY:		DRAWING NO:	ES-1
SCALE:	NONE		SHEET 2 OF 3

173

173

Surface Owner's Agreement

Continental Oil Co.
60 Warren Unit
LC 063 458
Sec 26 - 20S - 38E
1980/N 660/W

District Engineer
U. S. Geological Survey

Gentlemen:

Re: WARREN UNIT No. 60

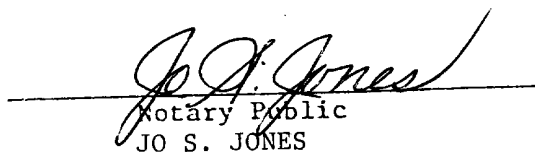
This refers to the Form 9-331C, Application to Drill, Deepen or Plugback accompanying this letter. The undersigned hereby states that he has personally contacted Earl KORNEGAY, the owner of the surface land where the proposed work is to be conducted and advised him of the proposed work, the construction site and pertinent roads included in the project. It is further stated that, upon being fully advised of the extent of the work and the effect upon the surface, said owner has consented to the said work and that agreement as to the compensation for damages to the surface estate has been reached.

It has been agreed, subject to change at that time, that upon abandonment of operations the roads shall be (ripped ~~or left intact~~) and the pad shall be (ripped ~~or left intact~~).



STATE OF NEW MEXICO
COUNTY OF LEA

Subscribed and sworn to before me this 11th day of October, 19 78



Notary Public
JO S. JONES

My commission expires
October 27, 1978