

NE EX-CO OIL CONSERVATION COMMISSIC  
WELL LOCATION AND ACREAGE DEDICATION PLAT

Form O-122  
Supersedes O-128  
Effective 1-1-65

All distances must be from the outer boundaries of the Section

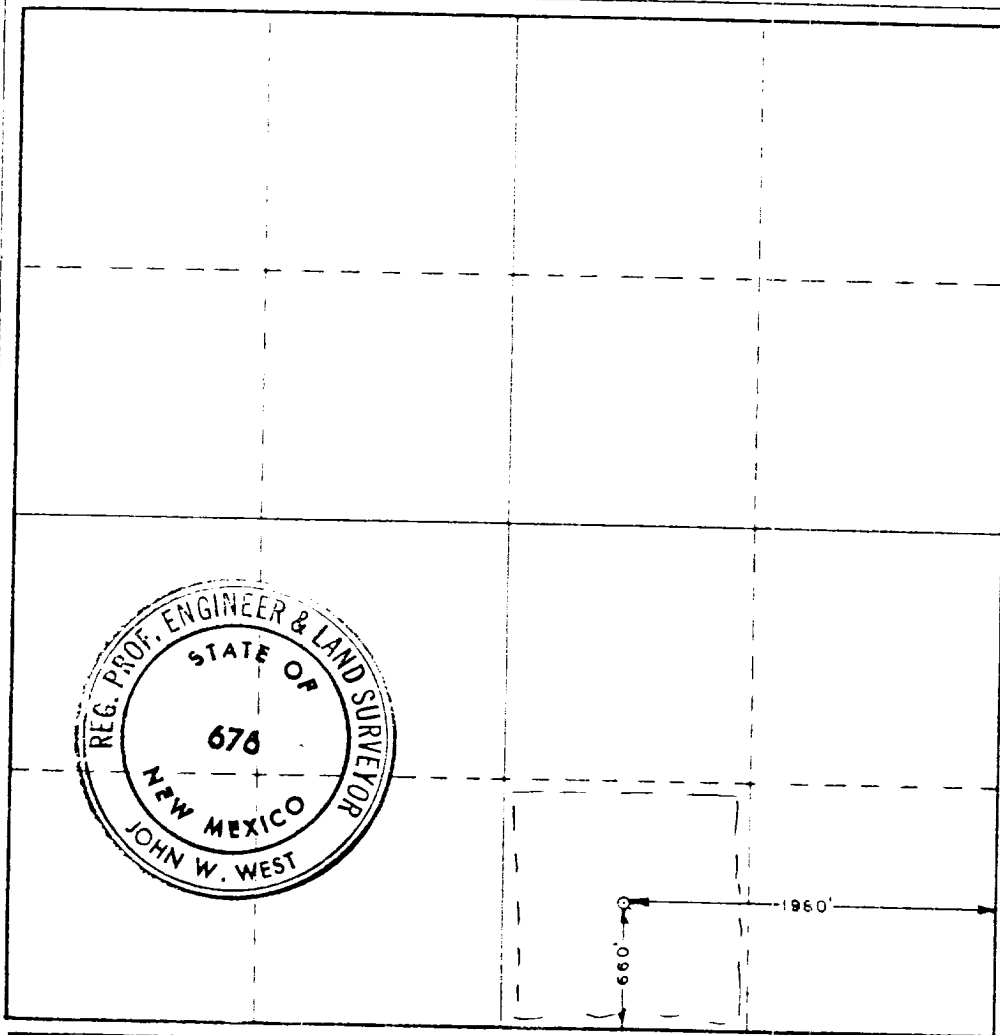
Continental Oil Co.			Lease Warren Unit		Well No. 63
Section 20	Township 20 South	Range 30 East	County Lea		
Section 20 South 1980 feet from the East					
3544.3	Producing Formation 2 lineborg + Twale	Pool NMEU	Dedicated Acreage 40		Acres

1. Outline the acreage dedicated to the subject well by colored pencil or hachure marks on the plat below.
2. If more than one lease is dedicated to the well, outline each and identify the ownership thereof (both as to working interest and royalty).
3. If more than one lease of different ownership is dedicated to the well, have the interests of all owners been consolidated by communitization, unitization, force-pooling, etc?

☐ Yes ☐ No If answer is "yes," type of consolidation \_\_\_\_\_

If answer is "no," list the owners and tract descriptions which have actually been consolidated. (Use reverse side of this form if necessary.) \_\_\_\_\_

No allowable will be assigned to the well until all interests have been consolidated (by communitization, unitization, forced-pooling, or otherwise) or until a non-standard unit, eliminating such interests, has been approved by the Commission.



CERTIFICATION

I hereby certify that the information contained herein is true and complete to the best of my knowledge and belief.

Name Wm A. T. Butterfield  
Position Administrative Supervisor

Company Continental Oil Co

Date 1-11-79

I hereby certify that the well location shown on this plat was plotted from field notes of actual surveys made by me or under my supervision, and that the same is true and correct to the best of my knowledge and belief.

Date Surveyed October 14, 1978

Registered Professional Engineer and/or Land Surveyor

John W. West  
Certificate No. John W. West 676

