

UNITED STATES  
DEPARTMENT OF THE INTERIOR  
GEOLOGICAL SURVEY

APPLICATION FOR PERMIT TO DRILL, DEEPEN, OR PLUG BACK

1a. TYPE OF WORK

DRILL ☒

DEEPEN ☐

PLUG BACK ☐

b. TYPE OF WELL

OIL  
WELL ☒

GAS  
WELL ☐

OTHER

SINGLE  
ZONE ☐

MULTIPLE  
ZONE ☒

2. NAME OF OPERATOR

3. ADDRESS OF OPERATOR

4. LOCATION OF WELL (Report location clearly and in accordance with any State requirements.\*)

At surface

1980' FNL and 530' FNL

At proposed prod. zone

same

14. DISTANCE IN MILES AND DIRECTION FROM NEAREST TOWN OR POST OFFICE\*

15. DISTANCE FROM PROPOSED\*

LOCATION TO NEAREST  
PROPERTY OR LEASE LINE, FT.  
(Also to nearest drlg. unit line, if any)

18. DISTANCE FROM PROPOSED LOCATION\*  
TO NEAREST WELL, DRILLING, COMPLETED,  
OR APPLIED FOR, ON THIS LEASE, FT.

21. ELEVATIONS (Show whether DF, RT, GR, etc.)

3524.1' GR

16. NO. OF ACRES IN LEASE

19. PROPOSED DEPTH

6900

17. NO. OF ACRES ASSIGNED  
TO THIS WELL

40

20. ROTARY OR CABLE TOOLS

RTG

22. APPROX. DATE WORK WILL START\*

June 1, 1979

PROPOSED CASING AND CEMENTING PROGRAM

SIZE OF HOLE	SIZE OF CASING	WEIGHT PER FOOT	SETTING DEPTH	QUANTITY OF CEMENT
12 1/4"	9 5/8"	32.3 #	1600'	600 AC
8 3/4"	7"	23 # & 26 #	6900	1425 AC

It is proposed to drill a straight hole to a TD of 6900'  
and complete as a dual oil well in the Blinbury and Tubbs zones  
See Attachment for 10 point well plan  
See attached for 13 point Surface Use Plan

RECEIVED

FEB 23 1979

U. S. GEOLOGICAL SURVEY  
HOBBS, NEW MEXICO

IN ABOVE SPACE DESCRIBE PROPOSED PROGRAM: If proposal is to deepen or plug back, give data on present productive zone and proposed new productive zone. If proposal is to drill or deepen directionally, give pertinent data on subsurface locations and measured and true vertical depths. Give blowout preventer program, if any.

24.

SIGNED

*Wm A. Butterfield*

TITLE

*Administrative Supervisor*

DATE

*Feb 20 1979*

(This space for Federal or State office use)

PERMIT NO.

APPROVAL DATE

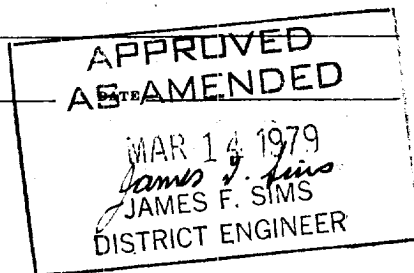
APPROVED BY

TITLE

CONDITIONS OF APPROVAL, IF ANY:

USGS  
NMJH  
+ FB RL  
JLH  
VMS

\*See Instructions On Reverse Side



RECEIVED  
MAR 2 0 1979  
OIL CONSERVATION COMM.  
HOUSTON, TEXAS

RECEIVED

MAR 2 0 1979

OIL CONSERVATION COMM.  
HOUSTON, TEXAS

NEW MEXICO OIL CONSERVATION COMMISSION  
WELL LOCATION AND ACREAGE DEDICATION PLAT

Form C-102  
Supersedes C-128  
Effective 1-1-65

All distances must be from the outer boundaries of the Section

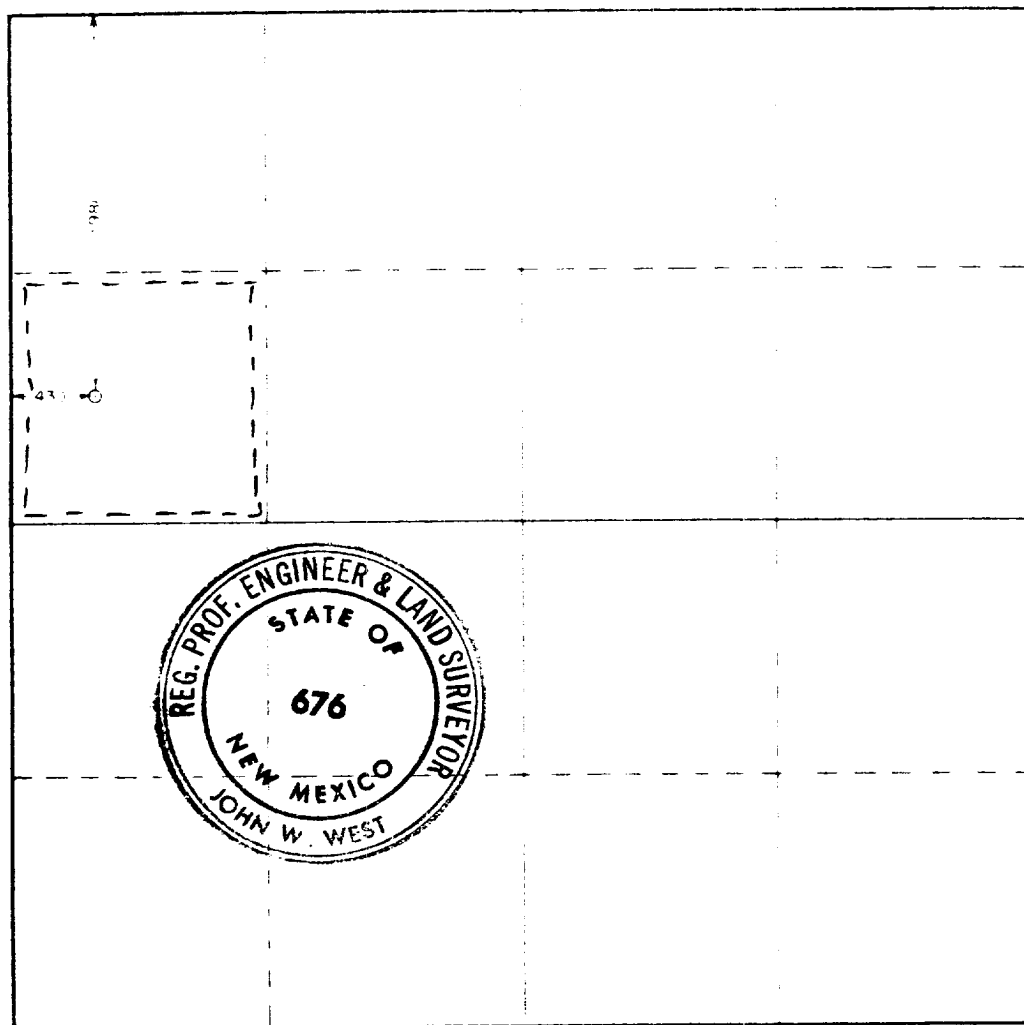
Operator <b>Continental Oil Co.</b>		Lease <b>S.E.M.U.</b>		Well No. <b>103</b>	
Section <b>E</b>	Section <b>29</b>	Range <b>10 S.</b>	Range <b>38 E.</b>	County <b>Lin.</b>	
Actual distance from the corner of the section to the well <b>1980</b>		Actual distance from the corner of the section to the well <b>430</b>		Actual distance from the corner of the section to the well <b>West</b>	
Ground Level <b>3531.9</b>	Producing Formation <b>Blindley + Tubbs</b>		Owner <b>W. Warren Blindley, Tubbs Oil &amp; Gas</b>		Dedicated Acreage <b>40</b>

- 1 Outline the acreage dedicated to the subject well by colored pencil or hatchure marks on the plat below.
- 2 If more than one lease is dedicated to the well, outline each and identify the ownership thereof (both as to working interest and royalty)
- 3 If more than one lease of different ownership is dedicated to the well, have the interests of all owners been consolidated by communitization, unitization, force-pooling, etc?

☐ Yes ☐ No If answer is "yes," type of consolidation \_\_\_\_\_

If answer is "no," list the owners and tract descriptions which have actually been consolidated (Use reverse side of this form if necessary.) \_\_\_\_\_

No allowable will be assigned to the well until all interests have been consolidated (by communitization, unitization, forced-pooling, or otherwise) or until a non-standard unit eliminating such interests, has been approved by the Commission.



CERTIFICATION

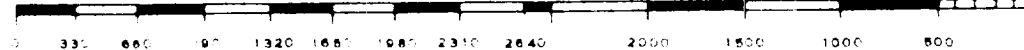
I hereby certify that the information contained herein is true and complete to the best of my knowledge and belief.

*Wm. A. T. Smith*  
Administrative Supervisor  
Continental Oil Company  
Date  
Mar 15, 1979

I hereby certify that the well location shown on this plat was plotted from field notes of actual surveys made by me or under my supervision, and that the same is true and correct to the best of my knowledge and belief.

Date  
March 10, 1979  
Registered Professional Engineer  
and Land Surveyor

*John W. West*  
Certificate No. John W. West 676  
Ronald J. Eidson 3239



**RECEIVED**

**MAR 20 1979**

**OIL CONSERVATION COMM.  
HOUSTON, TEXAS**

ATTACHMENT TO FORM 9-331 C  
APPLICATION FOR PERMIT TO DRILL

Continental Oil Company  
SEMU Warren No. 103 & SEMU Burger B. Nos. 104 & 108  
T-20S, R-38E  
Lea County, New Mexico

1. The geologic name of the surface formation is Quaternary Sand.
2. The estimated tops of important geologic markers are shown on the attached Proposed Well Plan.
3. The estimated depths at which anticipated water, oil, gas or other mineral-bearing formations to be encountered are shown on attached Proposed Well Plan.
4. The proposed casing program is as follows:

0' - 1600'	9 5/8", 32.3#, H-40, ST&C
0' - 5800'	7", 23#, K-55, ST&C
5800' - 6900'	7", 26#, K-55, ST&C
5. A drawing of an API Series 900 Blowout Preventer Specification is attached. Pipe rams and blinds will be checked to 1,000 PSI for 30 minutes when BOP is installed. BOP will be checked when casing string is set and operated daily for checks.
6. The proposed mud program is as follows:

0' - 1600'	8.5 - 9.0 ppg	spud mud
1600' - 6900'	9.0 - 10.0 pg	saltwater gel
7. The auxiliary equipment to be used is:
  - (1) kelly cocks
  - (2) floats at the bit
8. It is proposed to run GR CAL CNL FCD PDC logs at selected intervals, as shown on the attached Proposed well Plan.
9. No abnormal pressures or temperatures are expected to be encountered in this well.
10. The anticipated starting date for the first well is June 1, 1979, with a duration of approximately 21 days for each well.

PEB:rsy

**RECEIVED**

**MAR 20 1979**

**OIL CONSERVATION COMM.  
HOODS, N. M.**

# PROPOSED WELL PLAN OUTLINE

WELL NAME: SEMI WARREN NO. 103

COUNTY: Lea

LOCATION: 1980' ENL & 330' FWL  
Sec. 29, T-20S, R-38E

STATE: New Mexico

DEPTH	FORMATION TOPS & TYPE	DRILLING PROBLEMS	TYPE OF FORMATION EVALUATION	HOLE SIZE (IN)	CASING		FRACTURE GRADIENT (PPG)	FORMATION PRESSURE GRADIENT (PPG)	MUD	
					SIZE (IN)	DEPTH (FT)			WEIGHT (PPG)	TYP
	Pleistocene-Surface									
	Santa Rosa									
	100-200									
1000										
	Rustler Anhy.	1570		12 1/4	9 5/8	1600'			8.5-	Fresh
	Salado Salt	1660							9.0	Water
2000										
	Tansill Anhy.	2730								
	Yates SS	2870								
3000										
		None	Geolograph							
		Anticipated	Deflection							
			0-TD							
4000										
	San Andres dolp.	4280								
5000										
	Glorieta SS	5550								
6000							14.9			
	Blinbry Mkr	6035	GR-CNL-FDC							
			DLL-Rxo							
			TD-2600'							
	Tubb Mkr	6530						Less		
	Drinkard Dolo.	6800	Dipmeter	8 3/4	7"	6900'	15.1	Than	9.0-	Salt
7000	TD-6900		TD-5400'					8.5	10.0	Gel

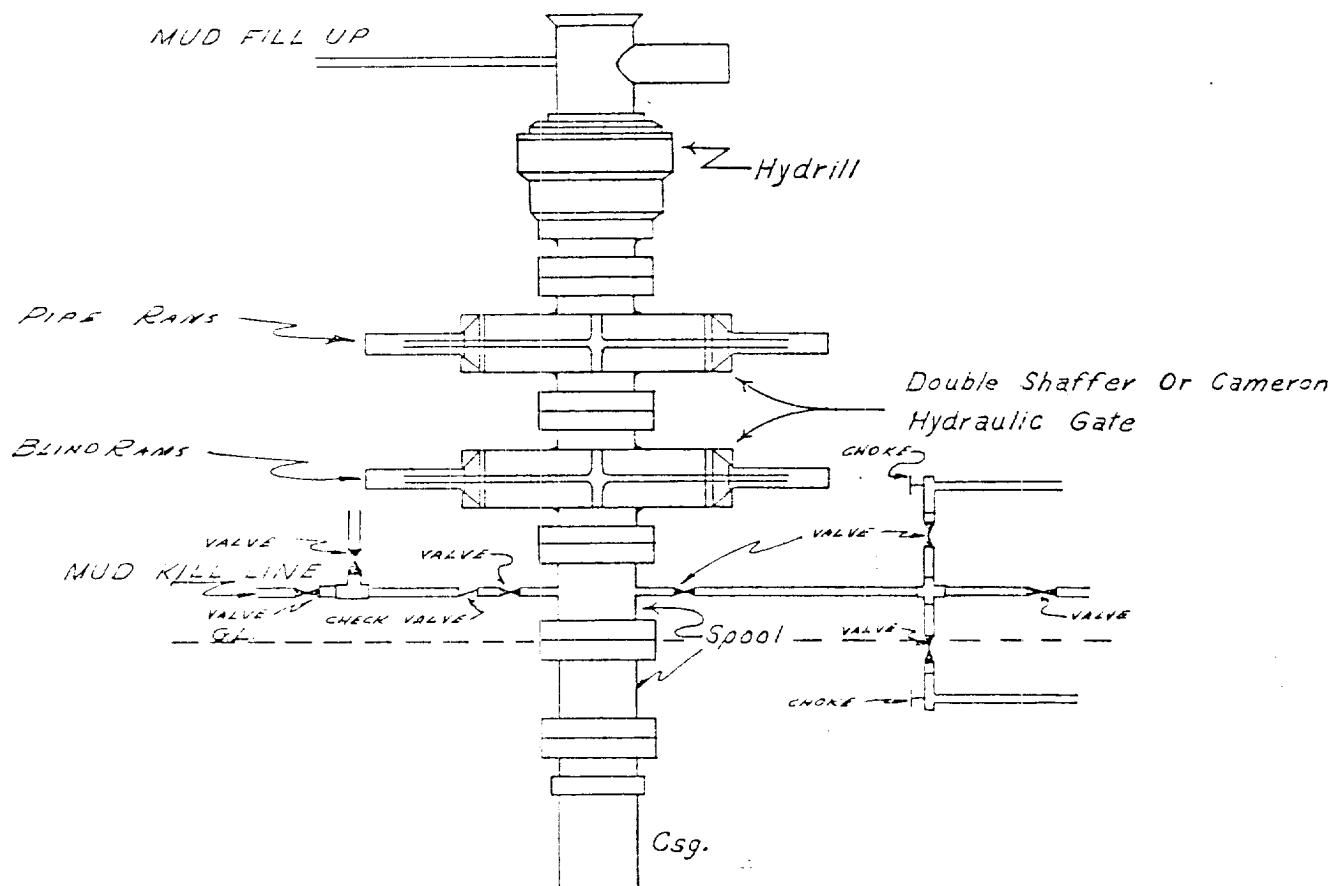
**RECEIVED**

**MAR 2 0 1979**

**OIL CONSERVATION COMM.  
BOBBS, N. M.**



CONTINENTAL OIL COMPANY  
Blow-out Preventer Specifications



NOTE:

API SERIES 900

Manual and Hydraulic controls with closing unit no less than 75' from well head.  
Remote controls on rig floor.

DUE TO SUBSTRUCTURE CLEARANCE,  
HYDRILL MAY OR MAY NOT BE USED.

RECEIVED

MAR 20 1979

OIL CONSERVATION COMM.  
HOUSTON, TEXAS

Continental Oil Company  
Surface Use Plan for 10 Wells in T-20S, R-38E  
Lea County, New Mexico

The plan is to accompany "Application for Permit to Drill" the subject wells. The following is a discussion of pertinent information concerning possible effect which the proposed drilling of the wells may have on the environment of the wells and road sites and surrounding acreage. A copy will be posted on the derrick floors so that all contractors and sub-contractors will be aware of all items of this plan.

1. Existing Roads

A. The proposed well sites are as follows:

Warren Unit No. 71 - 1980' FSL and 660' FWL, Section 25  
Warren Unit No. 72 - 1980' FSL and 1980' FWL, Section 25  
Warren Unit No. 73 - 1980' FNL and 1980' FWL, Section 25  
Warren Unit No. 74 - 660' FNL and 1980' FWL, Section 25  
→ SEMU Warren No. 103 - 1980' FNL and 330' FWL, Section 29  
SEMU Burger B No. 104 - 1980' FSL and 1650' FWL, Section 20  
SEMU Permian No. 105 - 1320' FSL and 1320' FWL, Section 19  
SEMU Permian No. 106 - 2640' FSL and 1320' FWL, Section 19  
SEMU Permian No. 107 - 2640' FSL and 2640' FWL, Section 19  
SEMU Burger B No. 108 - 1980' FSL and 330' FWL, Section 20

B. Exhibit "A" is a portion of a New Mexico road map showing existing black top roads. Directions to the area are as follows: From Stanolind Road south of Hobbs, travel south on Highway 18 for approximately 9.5 miles to Conoco's Warren Unit. The Warren Unit wells are located on the east side of the highway. Access is obtained by driving on the lease road opposite Conoco's red, white, and blue pumping units. The remaining wells are accessed via the lease road opened by Conoco's red, white and blue cattleguard. Refer to attached Exhibit "B" for lease road directions.

C. Access roads are shown on Exhibits "B" and "C".

D. No improvement or maintenance is anticipated for the existing roads.

2. Planned Access Roads

A. Width and Length: New roads required will be 16' wide and varying in length as shown on Exhibit "C". The new roads are labeled and coded on Exhibits "B" and "C".

B. Turnouts: None

C. Drainage Design: New roads will have a drop of 6" from center line on each side.

D. Culverts, Cuts and Fills: No culverts, major cuts or fills are required.

**RECEIVED**

**MAR 20 1979**

**OIL CONSERVATION COMM.  
HOBBES, N. M.**

E. Surfacing Material: Six inches of caliche, bladed, watered, and compacted.

F. Gates, Cattleguards, Fences: None required.

G. The proposed roads are staked.

3. Location of Existing Wells

See Exhibit "C"

4. Location of Existing and/or Proposed Facilities

A. Tank Batteries: Existing batteries are spotted on Exhibit "C".

B. Producing Facilities: No new producing facilities are required.

C. Oil Gathering Lines: Flowlines will lay on the surface alongside the roads.

D. Other Lines: Electrical power lines will be constructed on 330' spans as shown on Exhibit "E". The construction and equipment specifications are included.

E. Rehabilitation: Pits will be backfilled and leveled as soon as practical to original condition. Commencement of rehabilitation operations will immediately follow removal of drilling and completion equipment from location. Rehabilitation of the surface is planned to be completed within 45 days from commencement.

5. Water Supply

Water for the Warren Unit Wells will be hauled from Eunice, N. M. The remaining wells will be supplied from the Eumont Hardy Water System.

6. Source of Construction Materials

Caliche will be hauled over existing roads from an existing pit in Section 15, T-20S, R-38E. See Exhibit "C".

7. Methods for Handling Waste Disposal

Waste Disposal: Well cuttings will be disposed in reserve pit. Barrel trash containers to be in accessible locations within drill site area during drilling and completion procedures. All detrimental waste will be hauled away, burned, or buried with a minimum cover of 24" of dirt. See Exhibit "D" for location of pits. If well is productive, maintenance waste will be placed in special trash cans and hauled away periodically. Any produced water will be collected in tanks until hauled to an approved disposal system, or separate disposal applications will be submitted to the survey for appropriate approval.

**RECEIVED**

**MAR 20 1979**

**OIL CONSERVATION COMM.  
BOBBES, H. M.**

8. Ancillary Facilities

None

9. Well Site Layout

Exhibit "D" shows the relative location and dimensions of the well pad, mud pit, reserve pit, etc. The reserve pit will be lined with plastic. The pad and pits are staked.

10. Plans for Restoration of Surface

Pits will be backfilled and leveled as soon as practical to original condition. Commencement of rehabilitation operations will immediately follow removal of drilling and completion equipment from location and rehabilitation of the surface is planned to be completed within 45 days from commencement.

11. Other Information

A. Terrain: Rolling sand hills

B. Soil: Sandy

C. Vegetation: Shinnery, sparse

D. Surface Use: Grazing

E. Ponds and Streams: None within one mile.

F. Water Wells: See Exhibit "C"

G. Residences and Building: None

H. Arroyos, Canyons, Etc.: None

I. Well Sign: Sign identifying and locating wells will be maintained at drill sites with the spudding of the wells.

J. Open Pits: All pits containing mud or other liquids will be fenced.

K. Archaeological Resources: None observed.

12. Operator's Representative

Field personnel who can be contacted concerning compliance of this Surface Use Plan are as follows:

Production and Drilling  
W. D. Cates or H. C. Pokrandt  
1001 North Turner  
Hobbs, New Mexico 88240  
Phone: 393-4141

RECEIVED

MAR 20 1979

OIL CONSERVATION COMM,  
ROCK, N. M.

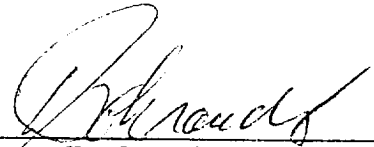


13. Certification

I hereby certify that I, or persons under my direct supervision, have inspected the proposed drill sites and access route; that I am familiar with the conditions which presently exist; that the statements made in this plan are, to the best of my knowledge, true and correct; and that the work associated with the operations proposed herein will be performed by Continental Oil Company and its contractors and sub-contractors in conformity with this plan and the terms and conditions under which it is approved.

2/13/79

DATE



H. C. Pokrandt  
Production Superintendent

**RECEIVED**

**MAR 20 1979**

**OIL CONSERVATION COMM.  
BOBB3, N. M.**



**RECEIVED**

**MAR 20 1979**

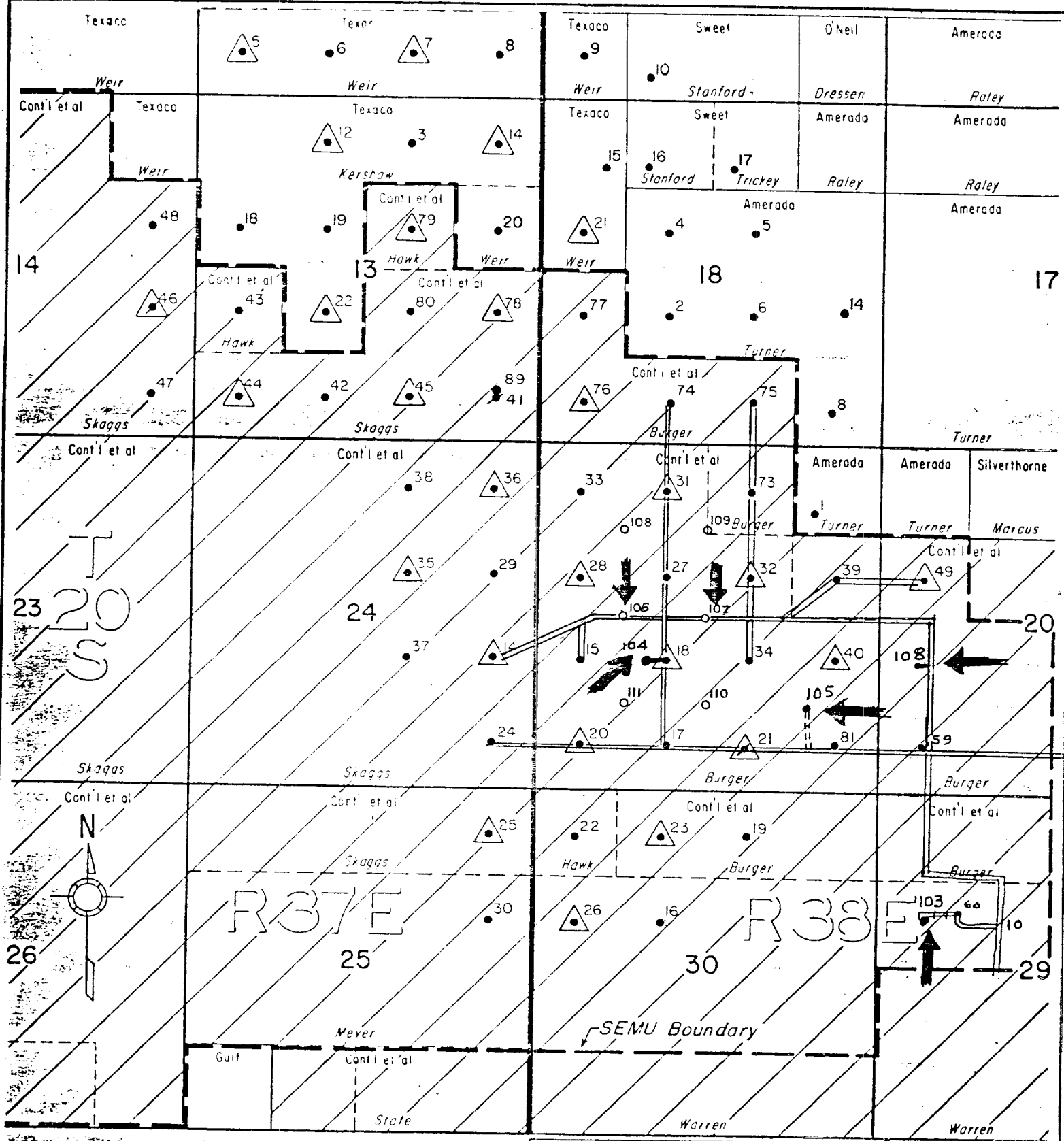
**OIL CONSERVATION COMM.  
DOBBS, N. M.**



**RECEIVED**

**MAR 20 1979**

**OIL CONSERVATION COMM.  
HOBBS, N. M.**



CONTINENTAL OIL COMPANY

PRODUCTION DEPARTMENT—HOBBS DISTRICT

SKAGGS POOL  
SEMU PERMIAN LEASE  
LEA COUNTY, NEW MEXICO

SCALE

0 1000 2000

BLJ

**RECEIVED**

**MAR 20 1979**

**OIL CONSERVATION COMM.  
ROBBS, H. M.**





**RECEIVED**

**MAR 20 1979**

**OIL CONSERVATION COMM.**

**BOBBS, R. M.**

