

UNITED STATES  
DEPARTMENT OF THE INTERIOR  
GEOLOGICAL SURVEY

## APPLICATION FOR PERMIT TO DRILL, DEEPEN, OR PLUG BACK

## 1a. TYPE OF WORK

DRILL ☒DEEPEN ☐PLUG BACK ☐

## b. TYPE OF WELL

OIL  
WELL ☒GAS  
WELL ☐

OTHER

SINGLE  
ZONE ☒MULTIPLE  
ZONE ☐

## 2. NAME OF OPERATOR

CONTINENTAL OIL CO.

## 3. ADDRESS OF OPERATOR

P.O. BOX 460 Hobbs N.M. 88240

## 4. LOCATION OF WELL (Report location clearly and in accordance with any State requirements.)\*

At surface

1980' FSL &amp; 1980' FEL

At proposed prod. zone

SAME

## 14. DISTANCE IN MILES AND DIRECTION FROM NEAREST TOWN OR POST OFFICE\*

## 15. DISTANCE FROM PROPOSED\*

LOCATION TO NEAREST  
PROPERTY OR LEASE LINE, FT.  
(Also to nearest drlg. unit line, if any)

## 18. DISTANCE FROM PROPOSED LOCATION\*

TO NEAREST WELL, DRILLING, COMPLETED,  
OR APPLIED FOR, ON THIS LEASE, FT.

## 16. NO. OF ACRES IN LEASE

## 19. PROPOSED DEPTH

6130'

17. NO. OF ACRES ASSIGNED  
TO THIS WELL

40

## 20. ROTARY OR CABLE TOOLS

ROTARY

## 21. ELEVATIONS (Show whether DF, RT, GR, etc.)

3501.5' GR

## 22. APPROX. DATE WORK WILL START\*

MAY 31, 1979

## 23.

## PROPOSED CASING AND CEMENTING PROGRAM

SIZE OF HOLE	SIZE OF CASING	WEIGHT PER FOOT	SETTING DEPTH	QUANTITY OF CEMENT
12 1/4"	8 5/8"	24#	1500'	696 sk circ
7 7/8"	5 1/2"	17#	6130'	1467 sk circ

It is proposed to drill a straight hole to a TD of 6130' and  
complete as a Blinbry Oil and Gas oil well

SEE Attachment for 10 point well plan.

SEE ATTACHED for 13 point Surface Use Plan.

RECEIVED

APR 23 1979

U. S. GEOLOGICAL SURVEY  
HOBBS, NEW MEXICO

IN ABOVE SPACE DESCRIBE PROPOSED PROGRAM: If proposal is to deepen or plug back, give data on present productive zone and proposed new productive zone. If proposal is to drill or deepen directionally, give pertinent data on subsurface locations and measured and true vertical depths. Give blowout preventer program, if any.

## 24.

SIGNED

*Baron R. R.*

TITLE

Administrative Supervisor

DATE 4-20-79

(This space for Federal or State office use)

PERMIT NO.

APPROVAL DATE

APPROVED BY

TITLE

CONDITIONS OF APPROVAL, IF ANY:

USGS 6  
NMFU 4  
FILE  
JFB

\*See Instructions On Reverse Side

APPROVED  
AS AMENDED

APR 30 1979  
*James F. Sims*  
JAMES F. SIMS  
DISTRICT ENGINEER

RECEIVED  
MAY - 1979  
OIL COMPANY

ATTACHMENT TO FORM 9-331 C  
APPLICATION FOR PERMIT TO DRILL

Continental Oil Company  
Warren Unit Nos. 75 and 76  
T-20S R-38E  
Lea County, New Mexico

1. The geologic name of the surface formation is Quaternary Sand.
2. The estimated tops of important geologic markers are shown on the attached Proposed Well Plan.
3. The estimated depths at which anticipated water, oil, gas or other mineral-bearing formations to be encountered are shown on attached Proposed Well Plan.
4. The proposed casing program is as follows:

0' - 1500'	8 5/8",	24#,	K-55,	ST&C
0' - 6130'	5 1/2",	17#,	K-55,	ST&C
5. A drawing of an API Series 900 Blowout Preventer Specification is attached. Pipe rams and blinds will be checked to 1,000 PSI for 30 minutes when BOP is installed. BOP will be checked when casing string is set and operated daily for checks.
6. The proposed mud program is as follows:

0' - 1500'	8.5 - 9.0	ppg	spud mud
1500' - 6130'	9.0 - 10.0	ppg	salt-water gel
7. The auxiliary equipment to be used is:
  - (1) kelly cocks
  - (2) floats at the bit
8. It is proposed to run GR CAL CNL FDC PDC logs at selected intervals.
9. No abnormal pressures or temperatures are expected to be encountered in this well.
10. The anticipated starting date for the first well is May 15, 1979, with a duration of approximately 17 days for each well.

PEB/rsy

## PROPOSED WELL PLAN OUTLINE

WELL NAME: Warren Unit No. 76

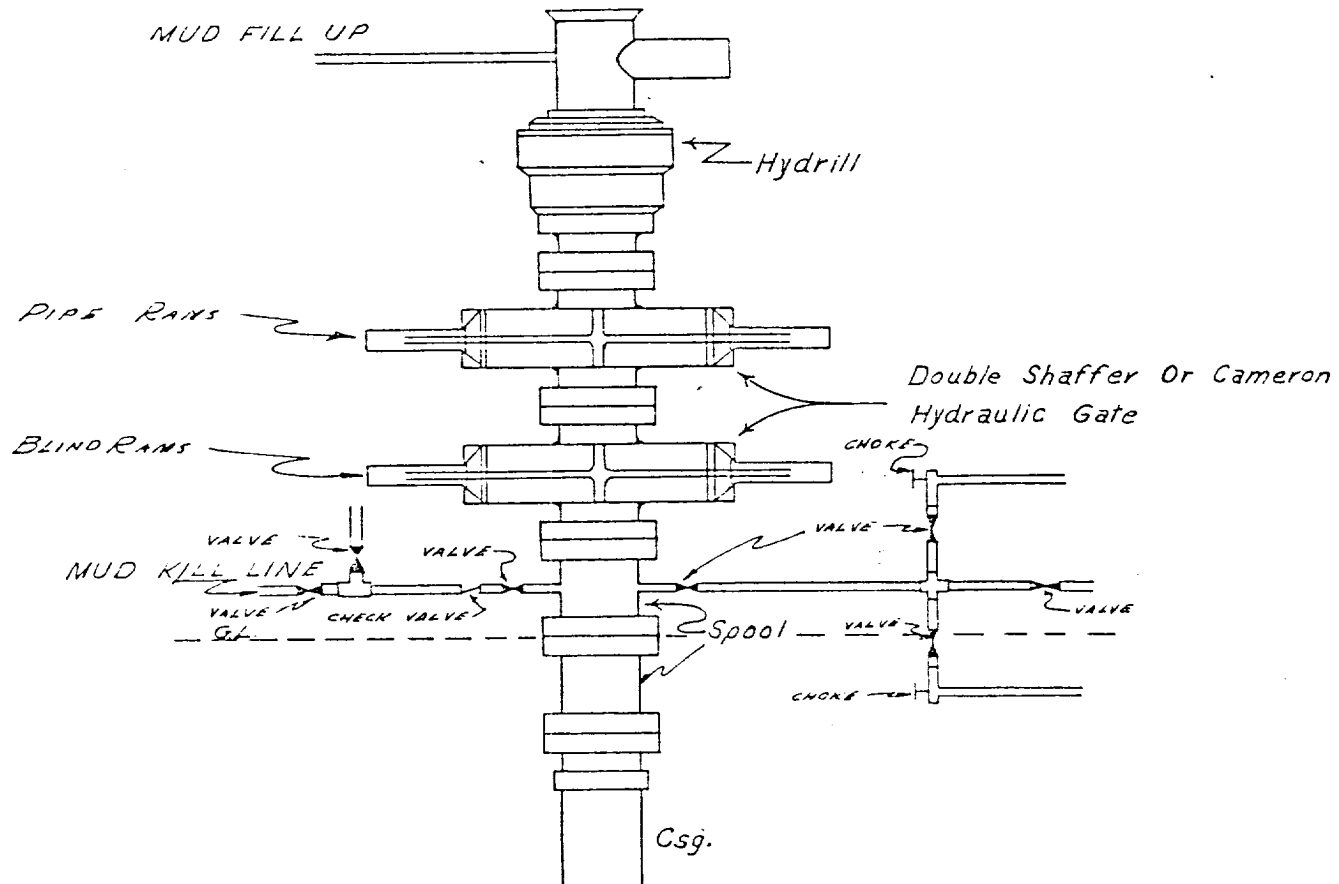
COUNTY: Lea

LOCATION: 1980' FSL & FEL  
Sec. 33, T20S, R38E  
Blinberry Single

STATE: New Mexico

[illegible]

CONTINENTAL OIL COMPANY  
Blow-out Preventer Specifications



NOTE:

## API SERIES 900

Manual and Hydraulic controls with closing unit no less than 75' from well head.  
Remote controls on rig floor.

DUE TO SUBSTRUCTURE CLEARANCE,  
HYDRILL MAY OR MAY NOT BE USED.

NEW MEXICO OIL CONSERVATION COMMISSION  
WELL LOCATION AND ACREAGE DEDICATION PLAT

Form C-102  
Supersedes C-128  
Effective 1-1-65

All distances must be from the outer boundaries of the Section

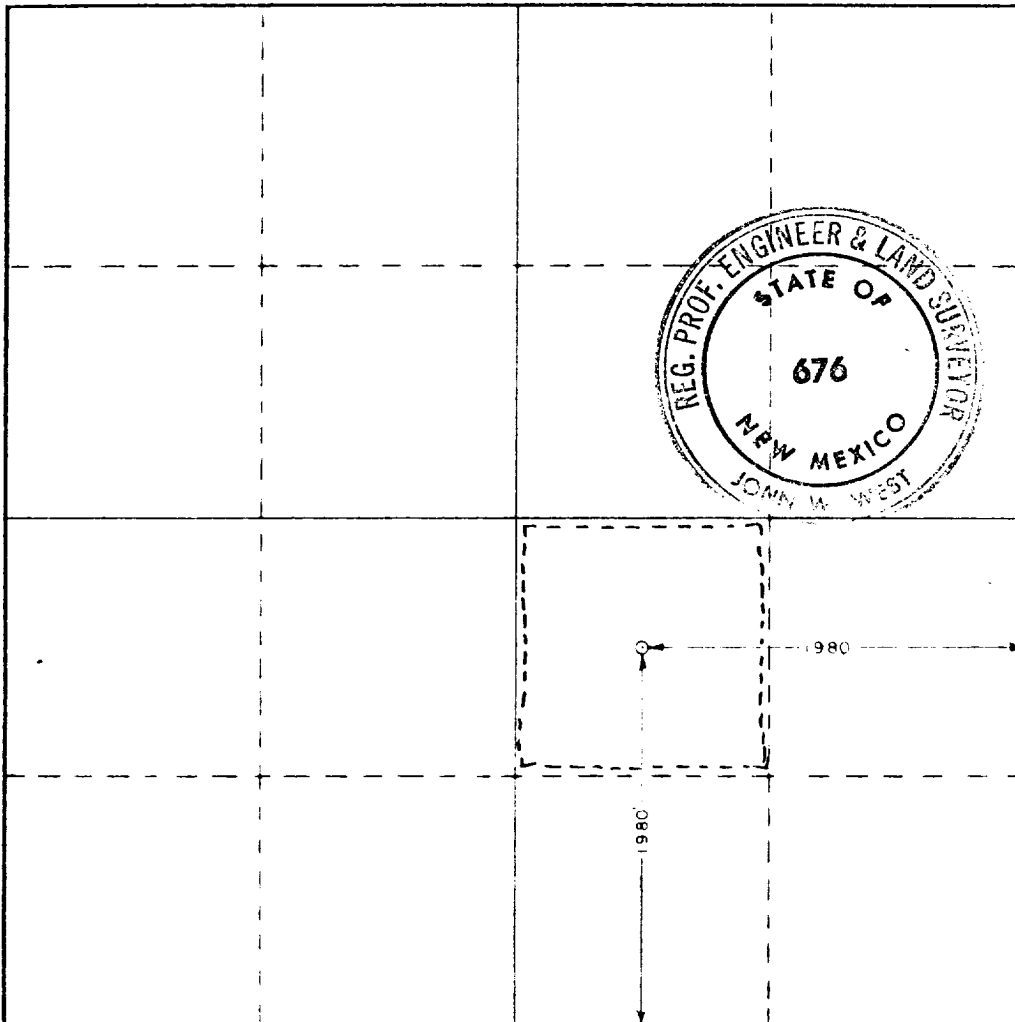
Operator <b>Continental Oil Company</b>		Lease <b>Warren Unit</b>		Well No. <b>76</b>
Unit Letter <b>J</b>	Section <b>33</b>	Township <b>20 South</b>	Range <b>38 East</b>	County <b>Lea</b>
Actual Footage Location of Well: <b>1980</b> feet from the <b>South</b> line and <b>1980</b> feet from the <b>East</b> line				
Ground Level Elev. <b>3501.5</b>	Producing Formation <b>Blinberry</b>	Pool <b>Blinberry Oil and Gas</b>	Dedicated Acreage <b>40</b>	

1. Outline the acreage dedicated to the subject well by colored pencil or hatchure marks on the plat below.
2. If more than one lease is dedicated to the well, outline each and identify the ownership thereof (both as to working interest and royalty).
3. If more than one lease of different ownership is dedicated to the well, have the interests of all owners been consolidated by communitization, unitization, force-pooling, etc?

☐ Yes ☐ No If answer is "yes," type of consolidation \_\_\_\_\_

If answer is "no," list the owners and tract descriptions which have actually been consolidated. (Use reverse side of this form if necessary.) \_\_\_\_\_

No allowable will be assigned to the well until all interests have been consolidated (by communitization, unitization, forced-pooling, or otherwise) or until a non-standard unit, eliminating such interests, has been approved by the Commission.



CERTIFICATION

I hereby certify that the information contained herein is true and complete to the best of my knowledge and belief

Name  
*Ben A. Lee*  
Position  
*Administrative Supervisor*  
Company  
*Continental Oil Co.*

Date  
*4-20-79*

I hereby certify that the well location shown on this plat was plotted from field notes of actual surveys made by me or under my supervision, and that the same is true and correct to the best of my knowledge and belief

Date surveyed  
*April 11, 1979*

Registered Professional Engineer and/or Land Surveyor

*John W. West*

Certificate No. *John W. West* 676

RECEIVED

MAY - 1979

TO THE DIRECTOR  
OF THE FBI

SURFACE USE PLAN  
Continental Oil Company  
Warren Unit Nos. 75 and 76  
T20S R38E  
Lea County, New Mexico

This plan is to accompany "Application for Permit to Drill" the subject well. The following is a discussion of pertinent information concerning possible effect which the proposed drilling of the well may have on the environment of the well and road sites and surrounding acreage. A copy will be posted on the derrick floor so that all contractors and sub-contractors will be aware of all items of this plan.

1. EXISTING ROADS

A. The proposed well sites are:

Warren Unit No. 75 - 1980' FSL and 1980' FWL, Sec. 34,  
T20S, R38E, Lea County, New Mexico

Warren Unit No. 76 - 1980' FSL and 1980' FEL, Sec. 33,  
T20S, R38E, Lea County, New Mexico

B. Exhibit "A" is a portion of a New Mexico road map showing existing black top roads. Directions to the locations are as follows: Travel 11 miles south on NM 18 out of Hobbs and turn west on the county road, 5/8 mile to Warren Unit No. 12 (Proposed No. 75 is 1320' north from here) and an additional 3/4 mile to Warren Unit No. 16. (Proposed No. 76 is 1320' north of the location.)

C,D,E. Access roads are shown on Exhibits "B" and "C".

F. No improvement or maintenance are anticipated for the existing roads.

2. PLANNED ACCESS ROADS

A. Width and Length: New road required will be 12' wide and 1200' long. The new roads are labeled on Exhibits "B" and "C".

B. Turnouts: One for each new road.

C. Drainage Design: New road will have a drop of 6" from center line on each side.

D. Culverts, Cuts and Fills: None.

E. Surfacing Material: Six inches of caliche, bladed, watered, and compacted.



F. Gates, Cattleguards, Fences: None required.

G. The proposed roads are staked.

3. LOCATION OF EXISTING WELLS

See Exhibit "C".

4. LOCATION OF EXISTING AND/OR PROPOSED FACILITIES

A. Tank Batteries: Warren Unit Battery I is located between the two wells and slightly north. See Exhibit "C".

B. Producing Facilities: No additional producing facilities will be required.

C. Oil Gathering Lines: Flow lines will lay on the surface alongside the road right-of-way.

D. Other Lines: Electric power lines will be constructed on 330' spans as shown on Exhibit "E".

E. Rehabilitation: Pits will be backfilled and leveled as soon as practical to original condition. Commencement of rehabilitation operations will immediately follow removal of drilling and completion equipment from location. Rehabilitation of the surface is planned to be completed within 45 days from commencement.

5. WATER SUPPLY

Water will be hauled from Eunice, New Mexico.

6. SOURCE OF CONSTRUCTION MATERIALS

Caliche will be hauled over existing roads from an existing pit in the NE/NW Sec. 3, T21S, R37E, Lea County, New Mexico.

7. METHODS FOR HANDLING WASTE DISPOSAL

Waste Disposal: Well cuttings will be disposed in reserve pit. Barrel trash containers to be in accessible locations within drill site area during drilling and completion procedures. All detrimental waste will be hauled away, burned or buried with a minimum cover of 24" of dirt. See Exhibit "D" for location of pits. If well is productive, maintenance waste will be placed in special trash cans and hauled away periodically. Any produced water will be collected in tanks until hauled to an approved disposal system or separate disposal applications will be submitted to the survey for appropriate approval.

8. ANCILLARY FACILITIES

None.

9. WELL SITE LAYOUT

Exhibit "D" shows the relative location and dimensions of the well pad, mud pit, reserve pit, etc. The reserve pit will be lined with plastic. The pad and pits are staked.

10. PLANS FOR RESTORATION OF SURFACE

Pits will be backfilled and leveled as soon as practical to original condition. Commencement of rehabilitation operations will immediately follow removal of drilling and completion equipment from location and rehabilitation of the surface is planned to be completed within 45 days from commencement.

11. OTHER INFORMATION

- A. Terrain: Flat.
- B. Soil: Sandy.
- C. Vegetation: Sparse native grasses.
- D. Surface Use: Grazing.
- E. Ponds and Streams: None within one mile.
- F. Water Wells: None.
- G. Residences & Buildings: None within one mile.
- H. Arroyos, Canyons, etc.: None within one mile.
- I. Well Sign: Sign identifying and locating well will be maintained at drill site with the spudding of the well.
- J. Open Pits: All pits containing mud or other liquids will be fenced.
- K. Archaeological Resources: None observed.

12. OPERATOR'S REPRESENTATIVE

Field personnel who can be contacted concerning compliance of this Surface Use Plan are as follows:

Production and Drilling  
W. D. Cates or H. C. Pokrandt  
1001 North Turner  
Hobbs, New Mexico 88240  
Phone: 393-4141

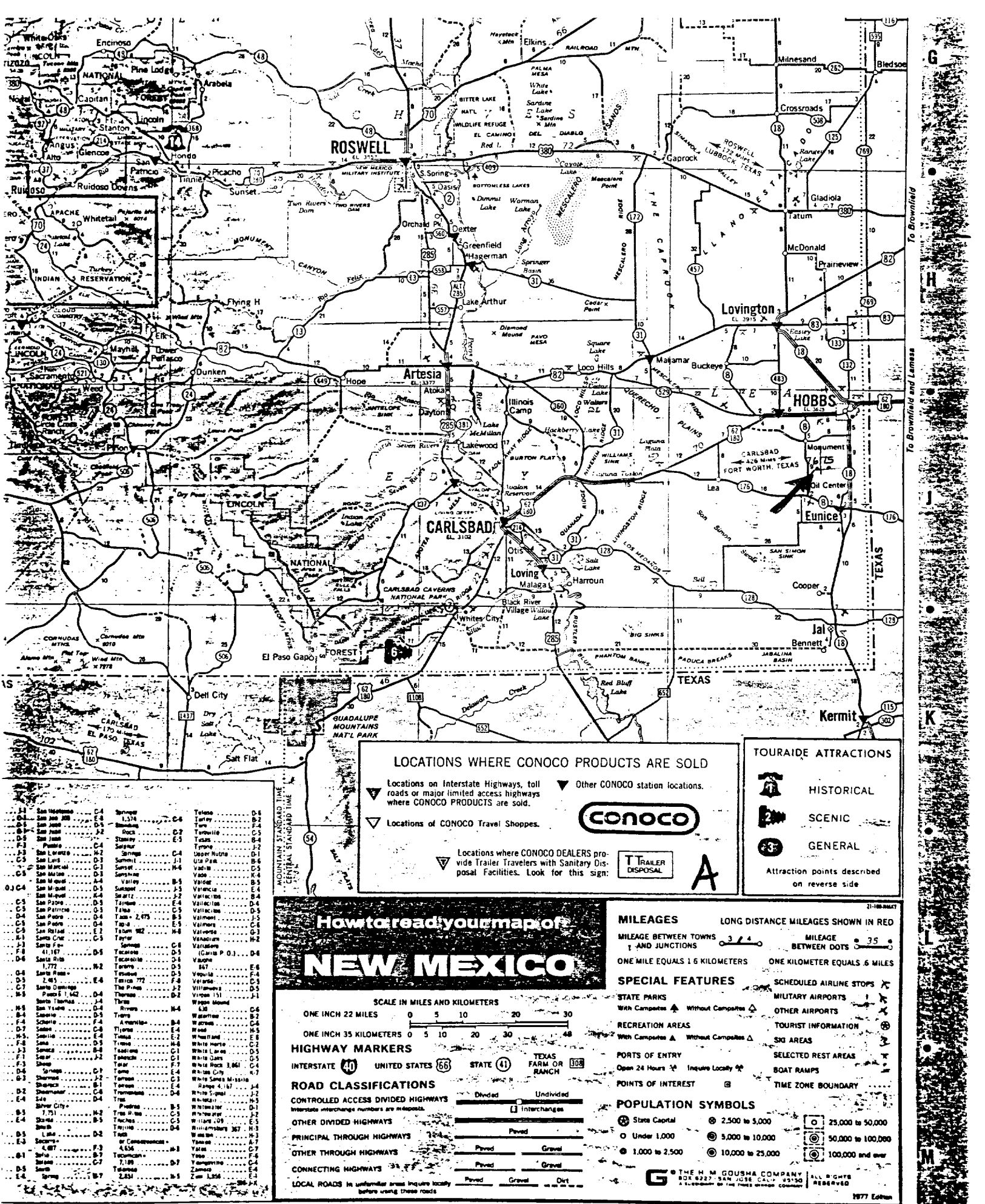
13. CERTIFICATION

I hereby certify that I, or persons under my direct supervision, have inspected the proposed drill site and access route; that I am familiar with the conditions which presently exist; that the statements made in this plan are, to the best of my knowledge, true and correct; and that the work associated with the operations proposed herein will be performed by Continental Oil Company and its contractors and sub-contractors in conformity with this plan and the terms and conditions under which it is approved.

4/17/79  
Date

H. C. Pokrandt  
H. C. Pokrandt  
Production Superintendent

PEB:cab



### LOCATIONS WHERE CONOCO PRODUCTS ARE SOLD

▼ Locations on Interstate Highways, toll roads or major limited access highways where CONOCO PRODUCTS are sold.

▼ Locations of CONOCO Travel Shoppes.

▼ Other CONOCO station locations.



▼ Locations where CONOCO DEALERS provide Trailer Travelers with Sanitary Disposal Facilities. Look for this sign:



A

### TOURAIDE ATTRACTIONS



HISTORICAL



SCENIC



GENERAL

Attraction points described on reverse side

## How to read your map of NEW MEXICO

### SCALE IN MILES AND KILOMETERS

ONE INCH 22 MILES 0 5 10 20 30

ONE INCH 35 KILOMETERS 0 5 10 20 30 40

### HIGHWAY MARKERS

INTERSTATE 40 UNITED STATES 66 STATE 41 TEXAS FARM OR RANCH 308

### ROAD CLASSIFICATIONS

CONTROLLED ACCESS DIVIDED HIGHWAYS Interstate interchange numbers are in red.

OTHER DIVIDED HIGHWAYS

PRINCIPAL THROUGH HIGHWAYS

OTHER THROUGH HIGHWAYS

CONNECTING HIGHWAYS

LOCAL ROADS in unfamiliar areas inquire locally before using these roads

### MILEAGES

MILEAGE BETWEEN TOWNS AND JUNCTIONS 3 4

ONE MILE EQUALS 1.6 KILOMETERS

LONG DISTANCE MILEAGES SHOWN IN RED

MILEAGE BETWEEN DOTS 35

ONE KILOMETER EQUALS .6 MILES

### SPECIAL FEATURES

STATE PARKS With Campsites Without Campsites

RECREATION AREAS With Campsites Without Campsites

PORTS OF ENTRY Open 24 Hours Inquire Locally

POINTS OF INTEREST

SCHEDULED AIRLINE STOPS

MILITARY AIRPORTS

OTHER AIRPORTS

TOURIST INFORMATION

SIX AREAS

SELECTED REST AREAS

BOAT RAMPS

TIME ZONE BOUNDARY

### POPULATION SYMBOLS

State Capital 2,500 to 5,000 50,000 to 100,000 100,000 and over

Under 1,000 5,000 to 10,000 10,000 to 25,000

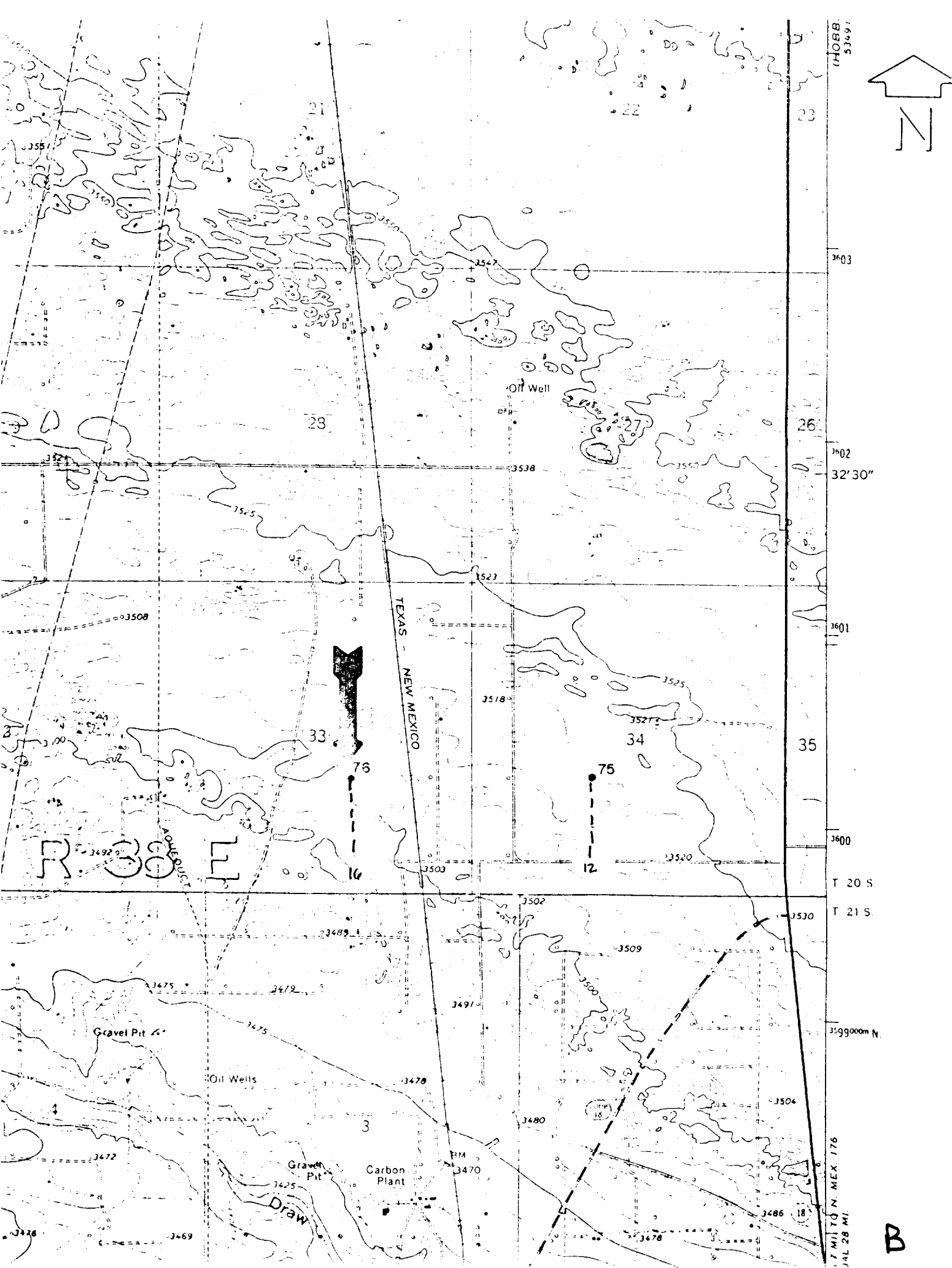
1,000 to 2,500

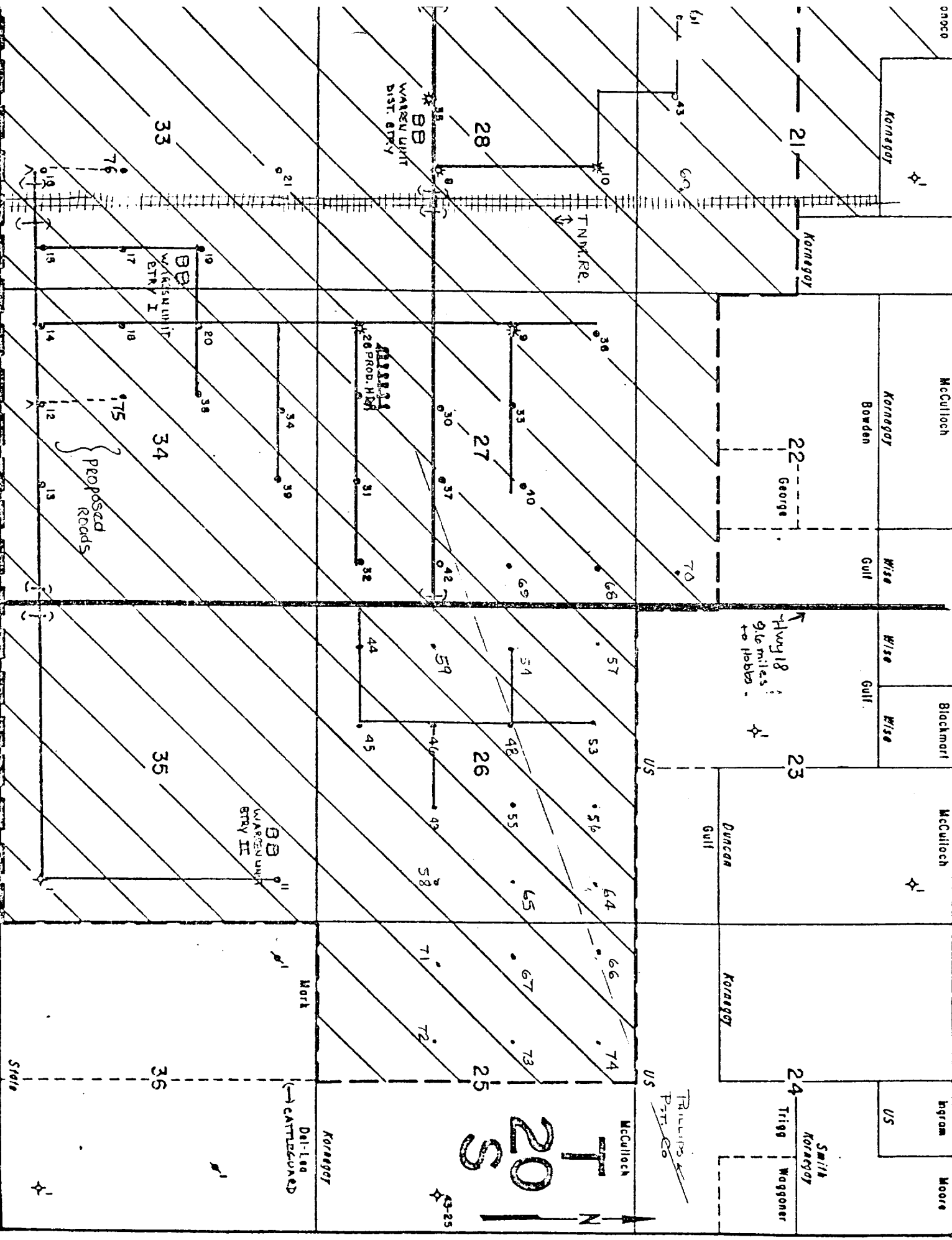
THE H. M. GOSHA COMPANY

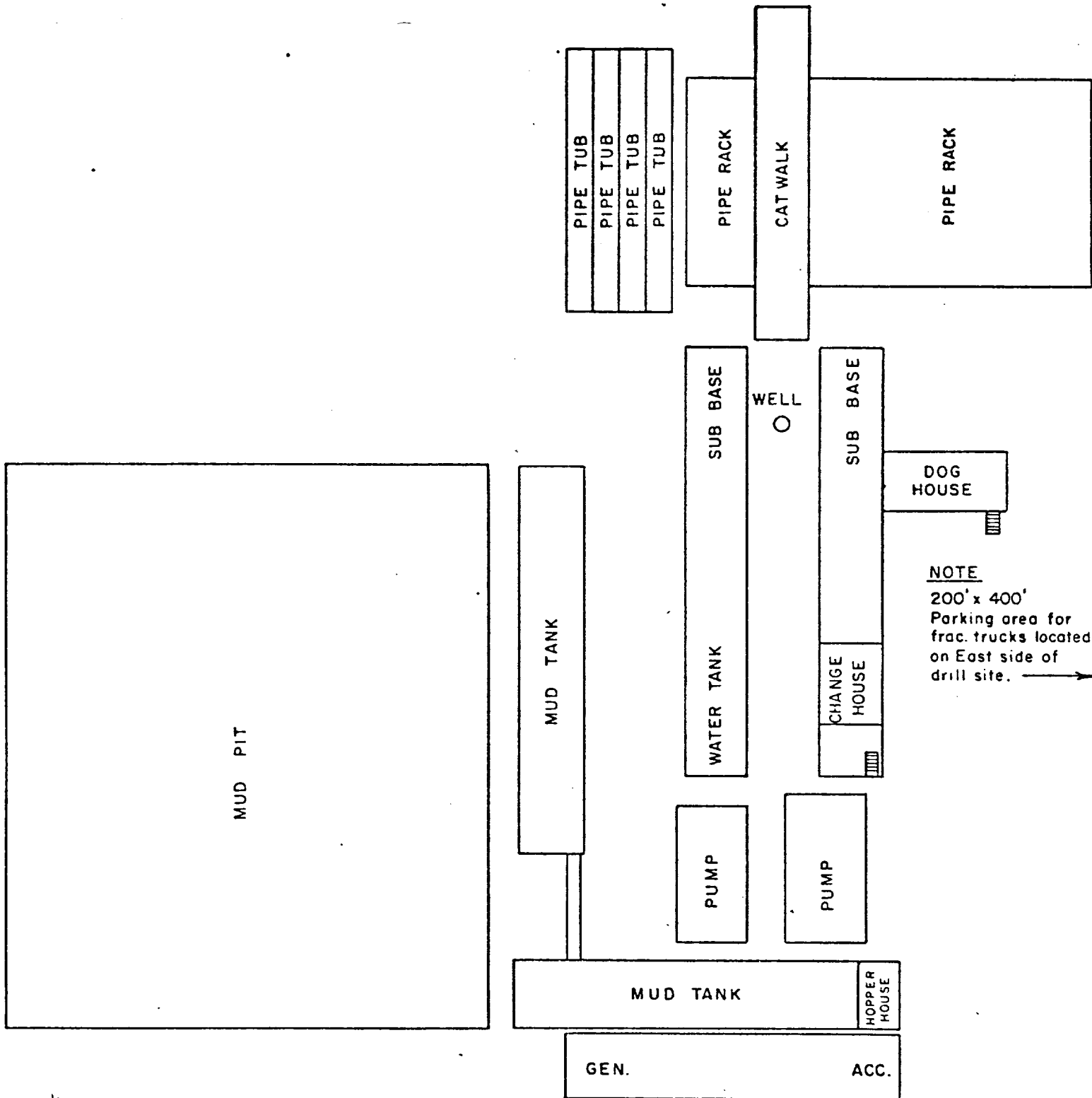
ALL RIGHTS RESERVED

1977 Edition

Enlarged in U.S.A.







APPROX. RIG SITE DIMENSIONS  
160' x 200'

**CONTINENTAL OIL COMPANY**  
PRODUCTION DEPARTMENT  
Casper, Wyoming



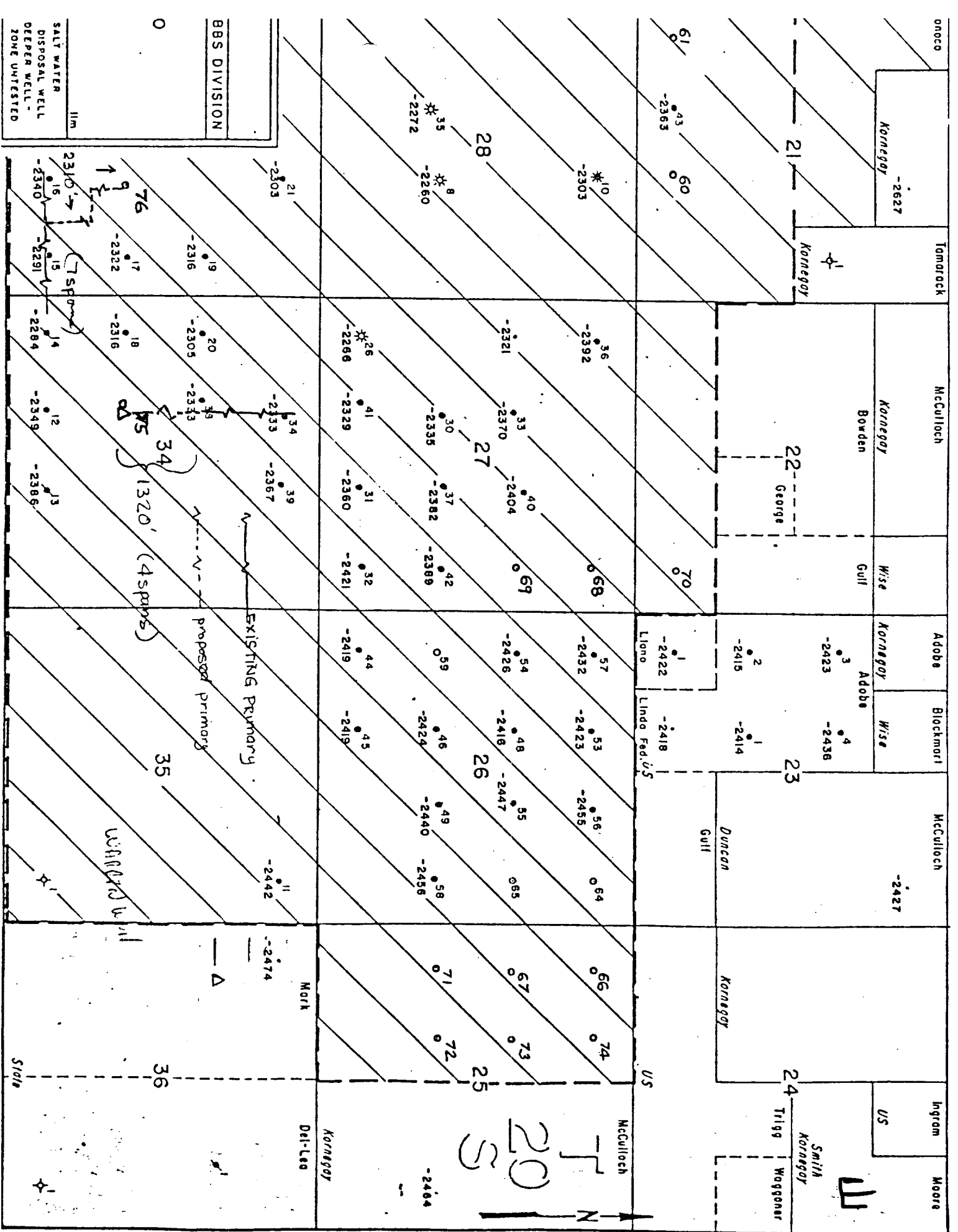
RIG LAYOUT

D

Engineer: ~~W. J. [unclear]~~

Draftsman: B.S.

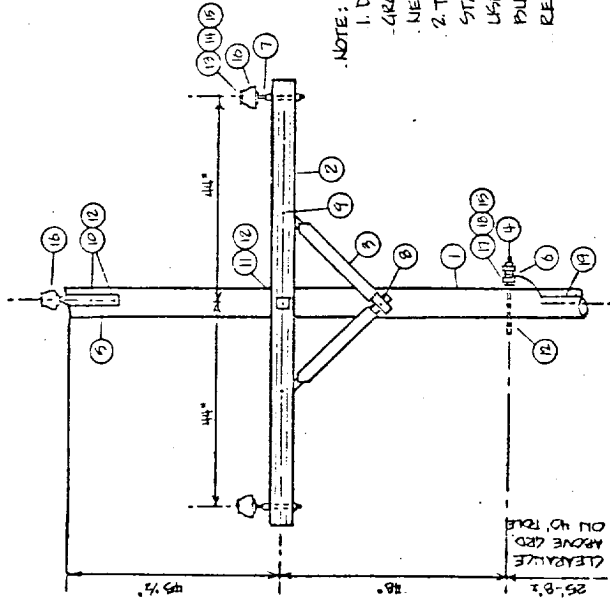
Date: 1-4-73





# MATERIALS

ITEM	DESCRIPTION	REQD	ITEM	DESCRIPTION	REQD
1	POLE, 110'	1	17	NEUTRAL CONDUCTOR	1
2	CROSSARM, 2 1/2" x 4 1/2" x 8'	1	18	ARMOR ROD	1
3	PLATE, WOOD	2	19	POLE GROUND WIRE, 6 AWG	5
4	GRUD RAIL	1			
5	RIDGE PIN, 1/2"	1			
6	STEEL INSULATOR	1			
7	STEEL PIN, 3/8" x 9"	2			
8	LARGE WIRE, 1/2" x 1/4"	1			
9	CARRAGE BOLT, 3/8" x 4 1/2"	2			
10	MACHINE BOLT, 1/2" x 10"	2			
11	WASHER, 2 1/2" x 1/2"	5			
12	PHASE CONDUCTOR	3			
13	ARMOR ROD	3			
14	TIE WIRE, 6 AL	1			
15	PIN INSULATOR, 9 KV	3			



NOTE:  
 1. DO NOT INSTALL  
 GROUND WIRE PAST  
 NEUTRAL CONDUCTOR  
 2. THIS CONSTRUCTION  
 STANDARD TO BE  
 USED ON ALL LINES  
 BUILT ON NATIONAL  
 RESOURCE LANDS

DATE: 7-15-77	TITLE: PRIMARY 110 LINE POLE 12,000 VOLT ACSR
DRAWN BY: [signature]	<div style="border: 1px solid black; padding: 5px; text-align: center;"> <b>CONOCO</b> </div>
DESIGN BY:	
CHECKED BY: SK	
APPROVED BY: SK	
SCALE: 1/4" = 1'	PRODUCTION DEPT. JOB: 1344, 42444
	HOBBS DIVI: DRAWING NO: E5-26

ITEM	QTY	REQ'D	REF
B	4		
C	9		
D	9		
E	3		
F	24		
G	12		
H	8		
J	8		
K	8		
L	8		
M	8		
N	8		
O	8		
P	8		
Q	8		
R	8		
S	8		
T	8		
U	8		
V	8		
W	8		
X	8		
Y	8		
Z	8		
AA	8		
AB	8		
AC	8		
AD	8		
AE	8		
AF	8		
AG	8		
AH	8		
AI	8		
AJ	8		
AK	8		
AL	8		
AM	8		
AN	8		
AO	8		
AP	8		
AQ	8		
AR	8		
AS	8		
AT	8		
AU	8		
AV	8		
AW	8		
AX	8		
AY	8		
AZ	8		
BA	8		
BB	8		
BC	8		
BD	8		
BE	8		
BF	8		
BG	8		
BH	8		
BI	8		
BJ	8		
BK	8		
BL	8		
BM	8		
BN	8		
BO	8		
BP	8		
BQ	8		
BR	8		
BS	8		
BT	8		
BU	8		
BV	8		
BW	8		
BX	8		
BY	8		
BZ	8		
CA	8		
CB	8		
CC	8		
CD	8		
CE	8		
CF	8		
CG	8		
CH	8		
CI	8		
CJ	8		
CK	8		
CL	8		
CM	8		
CN	8		
CO	8		
CP	8		
CQ	8		
CR	8		
CS	8		
CT	8		
CU	8		
CV	8		
CW	8		
CX	8		
CY	8		
CZ	8		
DA	8		
DB	8		
DC	8		
DD	8		
DE	8		
DF	8		
DG	8		
DH	8		
DI	8		
DJ	8		
DK	8		
DL	8		
DM	8		
DN	8		
DO	8		
DP	8		
DQ	8		
DR	8		
DS	8		
DT	8		
DU	8		
DV	8		
DW	8		
DX	8		
DY	8		
DZ	8		
EA	8		
EB	8		
EC	8		
ED	8		
EE	8		
EF	8		
EG	8		
EH	8		
EI	8		
EJ	8		
EK	8		
EL	8		
EM	8		
EN	8		
EO	8		
EP	8		
EQ	8		
ER	8		
ES	8		
ET	8		
EU	8		
EV	8		
EW	8		
EX	8		
EY	8		
EZ	8		
FA	8		
FB	8		
FC	8		
FD	8		
FE	8		
FF	8		
FG	8		
FH	8		
FI	8		
FJ	8		
FK	8		
FL	8		
FM	8		
FN	8		
FO	8		
FP	8		
FQ	8		
FR	8		
FS	8		
FT	8		
FU	8		
FV	8		
FW	8		
FX	8		
FY	8		
FZ	8		
GA	8		
GB	8		
GC	8		
GD	8		
GE	8		
GF	8		
GG	8		
GH	8		
GI	8		
GJ	8		
GK	8		
GL	8		
GM	8		
GN	8		
GO	8		
GP	8		
GQ	8		
GR	8		
GS	8		
GT	8		
GU	8		
GV	8		
GW	8		
GX	8		
GY	8		
GZ	8		
HA	8		
HB	8		
HC	8		
HD	8		
HE	8		
HF	8		
HG	8		
HH	8		
HI	8		
HJ	8		
HK	8		
HL	8		
HM	8		
HN	8		
HO	8		
HP	8		
HQ	8		
HR	8		
HS	8		
HT	8		
HU	8		
HV	8		
HW	8		
HX	8		
HY	8		
HZ	8		
IA	8		
IB	8		
IC	8		
ID	8		
IE	8		
IF	8		
IG	8		
IH	8		
II	8		
IJ	8		
IK	8		
IL	8		
IM	8		
IN	8		
IO	8		
IP	8		
IQ	8		
IR	8		
IS	8		
IT	8		
IU	8		
IV	8		
IW	8		
IX	8		
IY	8		
IZ	8		
JA	8		
JB	8		
JC	8		
JD	8		
JE	8		
JF	8		
JG	8		
JH	8		
JI	8		
JJ	8		
JK	8		
JL	8		
JM	8		
JN	8		
JO	8		
JP	8		
JQ	8		
JR	8		
JS	8		
JT	8		
JU	8		
JV	8		
JW	8		
JX	8		
JY	8		
JZ	8		
KA	8		
KB	8		
KC	8		
KD	8		
KE	8		
KF	8		
KG	8		
KH	8		
KI	8		
KJ	8		
KK	8		
KL	8		
KM	8		
KN	8		
KO	8		
KP	8		
KQ	8		
KR	8		
KS	8		
KT	8		
KU	8		
KV	8		
KW	8		
KX	8		
KY	8		
KZ	8		
LA	8		
LB	8		
LC	8		
LD	8		
LE	8		
LF	8		
LG	8		
LH	8		
LI	8		
LJ	8		
LK	8		
LL	8		
LM	8		
LN	8		
LO	8		
LP	8		
LQ	8		
LR	8		
LS	8		
LT	8		
LU	8		
LV	8		
LW	8		
LX	8		
LY	8		
LZ	8		
MA	8		
MB	8		
MC	8		
MD	8		
ME	8		
MF	8		
MG	8		
MH	8		
MI	8		
MJ	8		
MK	8		
ML	8		
MM	8		
MN	8		
MO	8		
MP	8		
MQ	8		
MR	8		
MS	8		
MT	8		
MU	8		
MV	8		
MW	8		
MX	8		
MY	8		
MZ	8		
NA	8		
NB	8		
NC	8		
ND	8		
NE	8		
NF	8		
NG	8		
NH	8		
NI	8		
NJ	8		
NK	8		
NL	8		
NM	8		
NN	8		
NO	8		
NP	8		
NQ	8		
NR	8		
NS	8		
NT	8		
NU	8		
NV	8		
NW	8		
NX	8		
NY	8		
NZ	8		
OA	8		
OB	8		
OC	8		
OD	8		
OE	8		
OF	8		
OG	8		
OH	8		
OI	8		
OJ	8		
OK	8		
OL	8		
OM	8		
ON	8		
OO	8		
OP	8		
OQ	8		
OR	8		
OS	8		
OT	8		
OU	8		
OV	8		
OW	8		
OX	8		
OY	8		
OZ	8		
PA	8		
PB	8		
PC	8		
PD	8		
PE	8		
PF	8		
PG	8		
PH	8		
PI	8		
PJ	8		
PK	8		
PL	8		
PM	8		
PN	8		
PO	8		
PP	8		
PQ	8		
PR	8		
PS	8		
PT	8		
PU	8		
PV	8		
PW	8		
PX	8		
PY	8		
PZ	8		
QA	8		
QB	8		
QC	8		
QD	8		
QE	8		
QF	8		
QG	8		
QH	8		
QI	8		
QJ	8		
QK	8		
QL	8		
QM	8		
QN	8		
QO	8		
QP	8		
QQ	8		
QR	8		
QS	8		
QT	8		
QU	8		
QV	8		
QW	8		
QX	8		
QY	8		
QZ	8		
RA	8		
RB	8		
RC	8		
RD	8		
RE	8		
RF	8		
RG	8		
RH	8		
RI	8		
RJ	8		
RK	8		
RL	8		
RM	8		
RN	8		
RO	8		
RP	8		
RQ	8		
RR	8		
RS	8		
RT	8		
RU	8		
RV	8		
RW	8		
RX	8		
RY	8		
RZ	8		
SA	8		
SB			

ITEM	DESCRIPTION	A. B. CHANCE NO.	JOSLYN NO.	OTHER MERS. NO.	NO. SUB.
A	35' class 6 creosoted pine pole				
B	3 1/2" x 4 1/2" x 8' treated crossarm				
C	High density wet process porcelain pin insulator				
D	5/8" x 3" forged steel pin w/eq. washer, nut, & locknut	081	463		
E	5/8" x 12" machine bolt w/ nut (or length req'd)	082			
F	2 1/4" x 2 1/4" x 3/16" x 11/16" hole sq. washer	083			
G	5/8" HP locknut	084			
H	1/4" x 1 1/4" x 28" flat Crossarm Brace	085			
I	1/2" x 4" E2 Porter Drive LOG Screw	509734			
J	3/8" x 4 1/2" Carriage Bolt w/ Nut	086			
K	3/8" HP Locknut	087			
L	Preformed Aluminum Alloy Armor Rods, size req'd				
M	tie wire #6 strong alum. alloy				
N	Epoxy Insulator (Extension Link)				
O	35' class 5 creosoted pine pole				
P	Aluminum double tab Squeeze on Connector for ACSR, Aluminum, or Copper-size req'd				
Q	6" Suspension Insulator	66200			
R	5/8" Standard Oval Eye Nut	6502			
S	Primary Dead End Clamp		44230		
T	5/8" x 18" (or length req'd) Double Arming Bolt w/4 sq. nuts	088			
U	guying detail - see dug No. ES-10 for specs.				
V	Hot Line Clamp				
W	Squeeze on basket, size required	51520AGP			
X					
Y					
Z					

DATE: 12-27-71		TITLE: DESCRIPTION MATERIALS	
DRAWN BY: E. WINTER		CONOCO	
DESIGN BY:		PRODUCTION DEPT. HOBBS DIVIS	
CHECKED BY:		JOB: ES-1	
APPROVED BY:		ELEC. SPECS	
SCALE: NONE		SHEET 13	

ITEM	DESCRIPTION	A. B. CHANCE NO.	JOSLYN NO.	OTHER MFRS. NO.	NO SUB.
AA	Primary Cutout - 100 amp, 15 KV, 16000 amp int. cap.	F2XX1015G			X
BB	General Purpose "U" bolt Clamp	UC510AGP			
CC	Lightening arrester, 10 KV				
DD	Single phase oil switch, 14.4 KV				
EE	Split bolt connector, also req'd				
FF	Grounding specs. see dwg No. ES-11 & ES-1A, Note 3				
GG	3" class 4 creosoted pine pole				
HH	Aluminum deadend pin for ACSR, also req'd				
JJ	30' class 6 creosoted pine pole				
KK	OVERHEAD GRND, #4 ACSR - If Req'd - Ref. Dwg ES-11, ES-1A - Note 3				
LL	Ground connector, motor				
MM	600 V. secondary lightening arrester single phase				
NN	Greenfield Type FF liquid-tight flexible steel conduit, also req'd, w/ necessary liquid-tight connectors.				
OO	Req'd size 1B fitting & cover & gasket				
PP	Transformer tank grounding terminal				
QQ	Bird Guards (insulating boots on transformer bushings)				

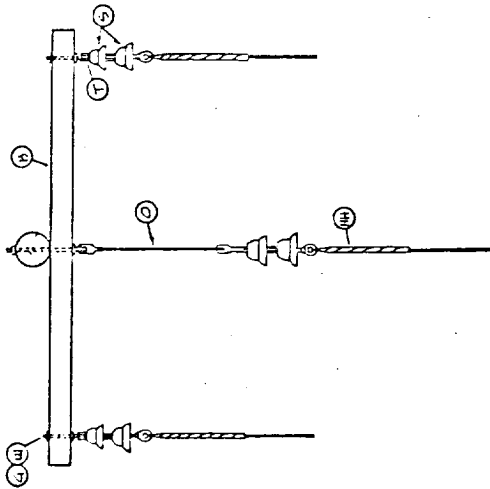
DATE: 12-27-71	TITLE: DESCRIPTION MATERIAL
DRAWN BY: E. WINTER	<div style="border: 1px solid black; padding: 5px; display: inline-block;">CONOCO</div>
DESIGN BY:	
CHECKED BY:	
APPROVED BY:	
SCALE: NONE	PRODUCTION DEPT. HOBBS VIS JOB: REC-SPECS DRAWING NO. ES-1 SHEET 3

ITEM	DESCRIPTION	A. B. CHANGE NO.	JOSLYN NO.	OTHER MFRS. NO.	NO. SUB.
a	double upset bolt s/aq. nut, round washer, and cotter key on short end, sq. nut and HF locknut on long end, 15 1/8" long (or length required.)	7H2B			
b	wet process porcelain secondary spool insulator, 3" - brown glaze		J0101		
d	required size conduit w/ servicehead(s) & req'd size & rated insulated conductors. Ref. Dwg ES-1B Note: provide clamp and ground conduit				
e	parallel groove clamp, size req'd				
f	secondary insulator clevis for 4" insulator				
g	3/8" thimble nut	6310			
h	3/8" x 12" (or length req'd) straight thimble	5512			
j	bolt w/aq. nut				
k	transformer cluster mount bracket (small)				
l	transformer cluster mount bracket (large)				
m	req'd size raintight disconnect & fuses, 3-phase, 600 V. Ref. Dwg No. ES-1B				
n	16" cross plate anchor (or size req'd)	X-16			
q	8-way expanding anchor (size req'd)	88135			
t	4" brown glaze wet process porcelain secondary spool insulator		J0101		
u	5/8" x 7" thimble anchor rod w/nut (use twineys if req'd - Chance No. 5347)	5317 (NUT 55006P)			
aa	3/8" high strength guy strand (10,800 lb.)				
bb	preformed guy grip for 3/8" guy strand				
dd	5/8" x 10" angle thimble bolt w/nut	5010			
ee	3"x3 1/4"x11/16" hole curved washer	6823 1/2			X
ff	6" - guy clamp w/3-1/2" bolts				
gg	medium size strain insulator				
hh	serving sleeve for 3/8" guy strand	6454			
jj	3/16" x 2-1/2" x 7" lift plate	7887			X
nn	pole bottom ground plate (may use butt-wrapp if desired)				
qq	Ground Connection (See Dwg. ES-12)				
rr	wet process porcelain secondary spool insulator, 3" - white glaze				
tt	wet process porcelain secondary spool insulator, 4" - white glaze				

DATE: 12-27-71		TITLE: DESCRIPTION MATERIALS	
DRAWN BY: E. WINTER		CONOCO	
DESIGN BY:		PRODUCTION DEPT.	
CHECKED BY:		JOB: HOBBS DIVIS	
APPROVED BY:		DRAWING NO: ES-1	
SCALE: NONE		ELEC SPECS	
		- SHEET 063	



ITEM	QTY	REQ'D
P	1	
G	3	
HH	3	
D	1	
S	6	
T	2	
W	3	



NOTE:  
FOR MATERIALS, SEE  
DRAWING, ES-1

DATE: 7-15-77		TITLE: EPOXY INSULATOR (EXTENSION LIN)	
DRAWN BY: J. McNeill		CONOCO	
DESIGN BY:			
CHECKED BY: SK		PRODUCTION DEPT. HOBBS DIVIS	
APPROVED BY: SK		JOB: DRAWING NO:	
SCALE: 1/2" = 1"		ELEC. SPECS. ES-28	

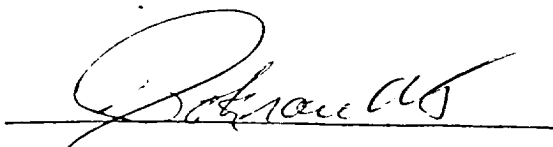
District Engineer  
U. S. Geological Survey

Gentlemen:

Re: Wazeeh Unit Nos. 75 and 76

This refers to the Form 9-331C, Application to Drill, Deepen or Plugback accompanying this letter. The undersigned hereby states that he has personally contacted the EC Hill Estate & 1st Nat'l Bank, the owner of the surface land where the proposed work is to be conducted and advised him of the proposed work, the construction site and pertinent roads included in the project. It is further stated that, upon being fully advised of the extent of the work and the effect upon the surface, said owner has consented to the said work and that agreement as to the compensation for damages to the surface estate has been reached.

It has been agreed, subject to change at that time, that upon abandonment of operations the roads shall be (ripped ~~or left intact~~) and the pad shall be (ripped ~~or left intact~~).



STATE OF NEW MEXICO  
COUNTY OF LEA

Subscribed and sworn to before me this 18th day of April, 1975

  
Notary Public

My commission expires 2-20-81