

NEW MEXICO OIL CONSERVATION COMMISSION
WELL LOCATION AND ACREAGE DEDICATION PL.

Form C-102
Supersedes C-128
Effective 1-1-65

All distances must be from the outer boundaries of the Section

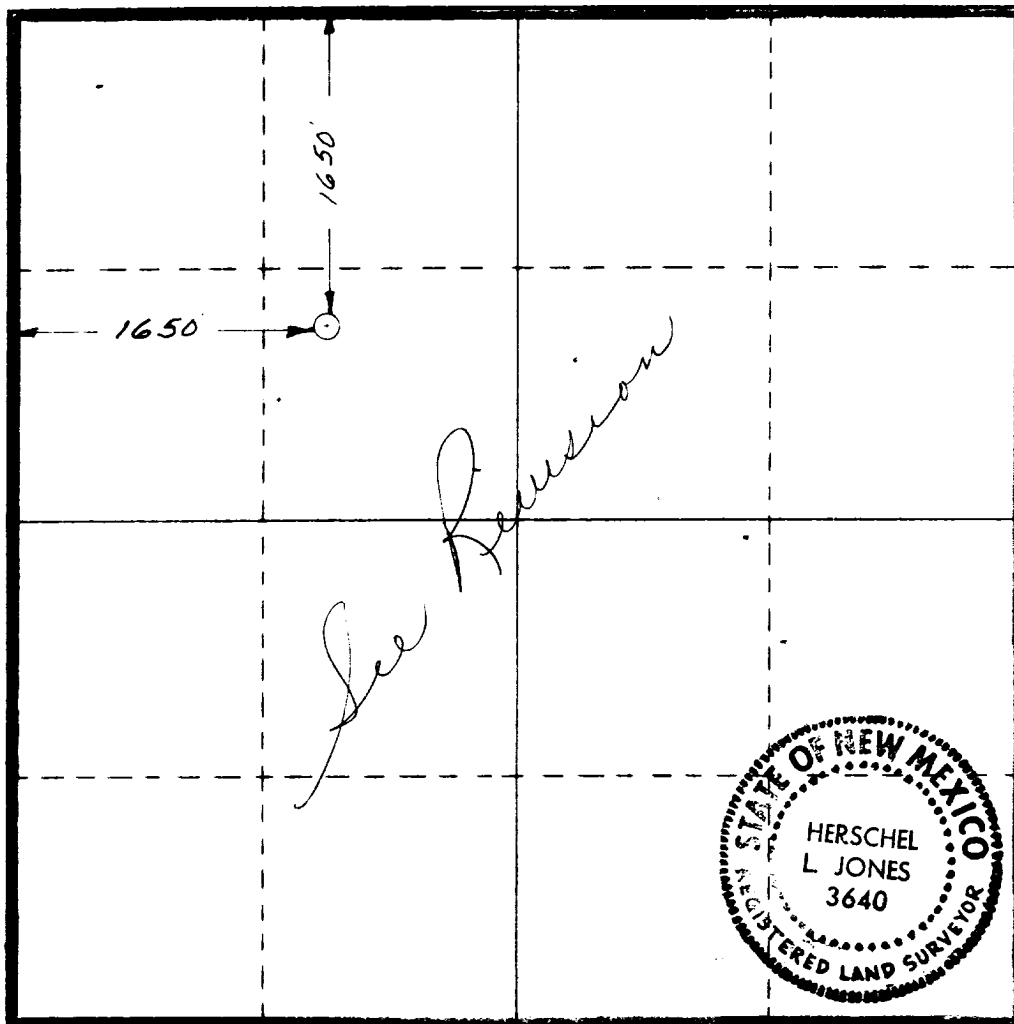
Operator GETTY OIL COMPANY			Lease <i>Getty</i> STATE <i>Com</i>		Well No. 1
Unit Letter "F"	Section 1	Township 22 South	Range 34 East	County LEA	
Actual Footage Location of Well: 1650 feet from the NORTH line and 1650 feet from the WEST line					
Ground Level Elev. 3597	Producing Formation Morrow	Pool UNDESIGNATED	Dedicated Acreage: 640 Acres		

- Outline the acreage dedicated to the subject well by colored pencil or hatchure marks on the plat below.
- If more than one lease is dedicated to the well, outline each and identify the ownership thereof (both as to working interest and royalty).
- If more than one lease of different ownership is dedicated to the well, have the interests of all owners been consolidated by communitization, unitization, force-pooling, etc?

☒ Yes ☐ No If answer is "yes," type of consolidation Communitization

If answer is "no," list the owners and tract descriptions which have actually been consolidated. (Use reverse side of this form if necessary.)

No allowable will be assigned to the well until all interests have been consolidated (by communitization, unitization, forced-pooling, or otherwise) or until a non-standard unit, eliminating such interests, has been approved by the Commission.



CERTIFICATION

I hereby certify that the information contained herein is true and complete to the best of my knowledge and belief.

Dale R. Crockett

Name

Dale R. Crockett

Position

Area Superintendent

Company

Getty Oil Company

Date

July 6, 1979

I hereby certify that the well location shown on this plat was plotted from field notes of actual surveys made by me or under my supervision, and that the same is true and correct to the best of my knowledge and belief.

Date Surveyed

JULY 2, 1979

Registered Professional Engineer and/or Land Surveyor

Herschel L. Jones

Certificate No.

3640

0 330 660 990 1320 1650 1980 2310 2640 2000 1800 1600 1400 1200 1000 800 0

RECEIVED
JUL - 9 1979
O.C.D. HOBBS, OFFICE

113