

MEXICO OIL CONSERVATION COMMISSION
WELL LOCATION AND ACREAGE DEDICATION PLAT

Form O-123
Supersedes O-128
February 1, 1979

All distances must be from the outer boundaries of the Section

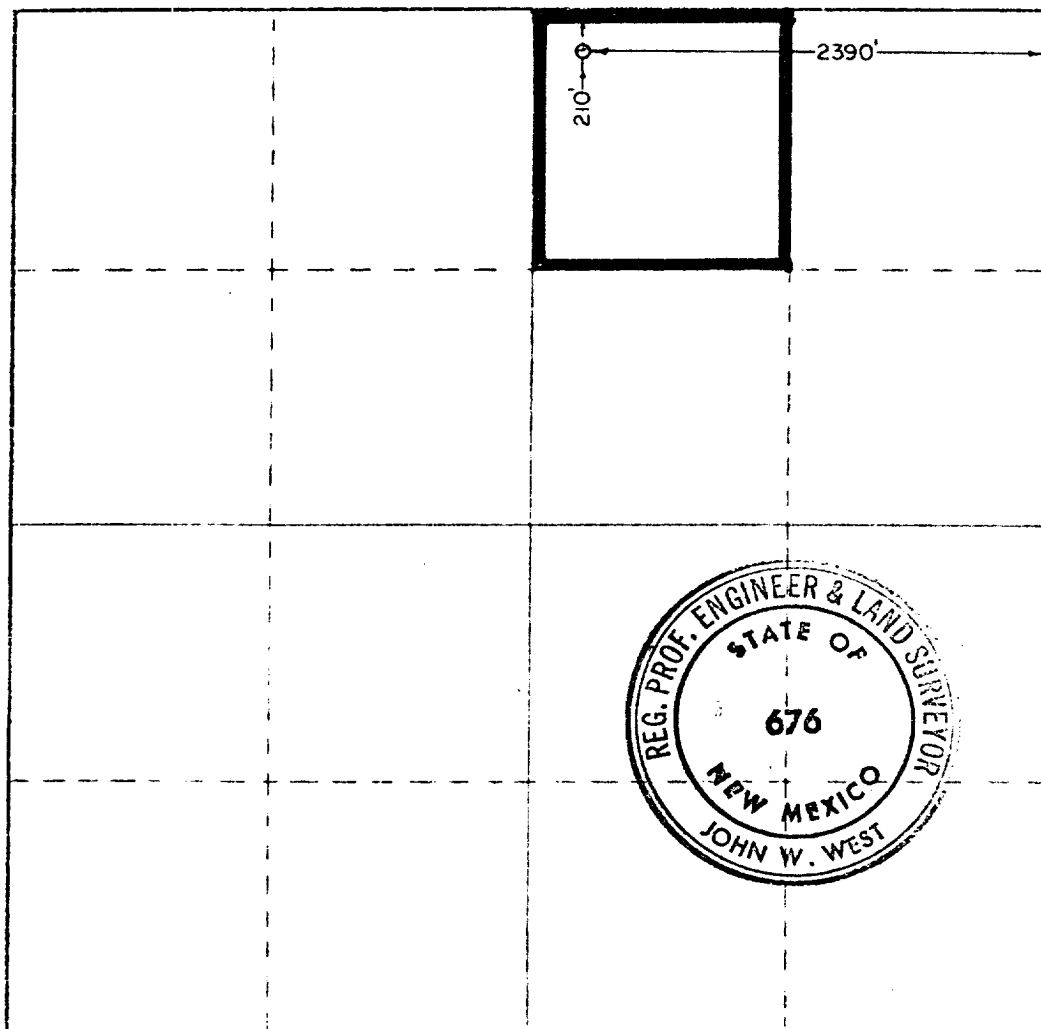
Lessor GULF OIL CORPORATION		Lease CDU		Well No. 428	
Plot Letter B	Section 32	Township 21 SOUTH	Range 37 EAST	County LEA	
Actual Footage Location of Well: 210 feet from the NORTH line and 2390 feet from the EAST line					
Ground Level Elev.	Producing Formation Drinkard	Pool Drinkard	Dedicated Acreage: 40 Acres		

1. Outline the acreage dedicated to the subject well by colored pencil or hachure marks on the plat below.
2. If more than one lease is dedicated to the well, outline each and identify the ownership thereof (both as to working interest and royalty).
3. If more than one lease of different ownership is dedicated to the well, have the interests of all owners been consolidated by communitization, unitization, force-pooling, etc?

☐ Yes ☐ No If answer is "yes," type of consolidation _____

If answer is "no," list the owners and tract descriptions which have actually been consolidated. (Use reverse side of this form if necessary.) _____

No allowable will be assigned to the well until all interests have been consolidated (by communitization, unitization, forced-pooling, or otherwise) or until a non-standard unit, eliminating such interests, has been approved by the Commission.



CERTIFICATION

I hereby certify that the information contained herein is true and complete to the best of my knowledge and belief.

R. C. Anderson

Name

R. C. Anderson

Position

Area Production Manager

Company

Gulf Oil Corporation

Date

8-20-79

I hereby certify that the well location shown on this plat was plotted from field notes of actual surveys made by me or under my supervision and that the same is true and correct to the best of my knowledge and belief.

Date Surveyed

JULY 3RD, 1979

Registered Professional Engineer and Land Surveyor

John W. West

Certificate No. **John W. West**

676

Ronald J. Eidson 3239

100 660 1320 1650 1980 2310 2640 2970 3300 3630 3960 4290

RECEIVED

AUG 22 1973

O.C.D. HOBBS OFFICE

115