

DEPARTMENT OF THE INTERIOR
GEOLOGICAL SURVEY

30-025-26465

U. S. GEOLOGICAL SURVEY AND SERIAL NO.

20 050132 (5)

U. S. DESIGN, ALLOTTEE OR TRADE NAME

7. UNIT ACCESSION NAME

8. NAME OF LESSEE NAME
Glosson "B"

9. WELL NO.

27

10. TYPE AND POOL, OR WILDCAT
Calmat11. SECTION, T. R. S. OR SEC.
AND SURVEY OR AREA

Sec. 18, T-22S, R-36E

12. COUNTY OR PARISH, 13. STATE

18

New Mexico

1. TYPE OF WORK

DRILL ☒DIPPER ☐PLUG BACK ☐

2. TYPE OF WELL

OIL
WELL ☒GAS
WELL ☐

OTHER

SINGLE
ZONE ☐MULTIPLE
ZONE ☐

3. NAME OF OPERATOR

HOBBSDALE PETROLEUM CORPORATION

4. ADDRESS OF OPERATOR

Box 1855, Hobbs, NM 88240

5. LOCATION OF WELL (Report location clearly and in accordance with any State requirements.)*

At Surface

800 FNL and 1980 FNL, Section 19

At proposed prod. zone

16. DISTANCE IN MILES AND DIRECTION FROM NEAREST TOWN OR POST OFFICE*

10 miles SW of Eunice, New Mexico

18. DISTANCE FROM PROPOSED*

DISTANCE TO NEAREST
TOWN OR POST OFFICE, MI.
(Give to nearest 0.1 mi. if any)

860

19. NO. OF ACRES IN LEASE

1640

17. NO. OF ACRES ASSIGNED
TO THIS WELL

10

20. DISTANCE FROM PROPOSED LOCALITY
TO NEAREST WELL, DRILLING, COMPLETED,
OR ABANDONED, ON THIS LEASE, MI.

1650

21. PROPOSED DEPTH

3900

22. ROTARY OR OTHER TOOLS

rotary

23. ESTIMATIONS (Show whether DR, RT, GR, etc.)

3872.2 GR

24. APPROX. DATE WORK WILL START*

upon approval

25. PROPOSED CASING AND CEMENTING PROGRAM

SIZE OF HOLE	SIZE OF CASING	WEIGHT PER FOOT	SETTING DEPTH	QUANTITY OF CEMENT
12 1/4	8 5/8	24#	400	250 sk. cement
7 7/8	5 1/2	3.5#	3900	750 sk. cement

See attachments for blowout preventor, mud program and complete details of operations.

RECEIVED

AUG 10 1979

U. S. GEOLOGICAL SURVEY
HOBBS, NEW MEXICO

ON ABOVE, SHOWS PROPOSED PROGRAM: If proposal is to deepen or plug back, give data on present productive zone and proposed new productive zone. If proposal is to drill or deepen directionally, give pertinent data on subsurface locations and measured and true vertical depths. Give blowout preventor program, if any.

26.

SIGNED

TITLE

Secretary-Treasurer

DATE August 8, 1979

(This space for Federal or State office use)

PERMIT NO.

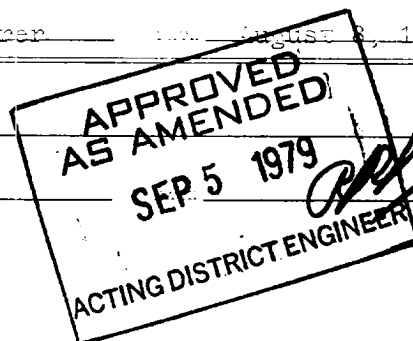
APPROVAL DATE

APPROVED BY

TITLE

CONDITIONS OF APPROVAL, IF ANY:

*See Instructions On Reverse Side



OFFICE OF THE ATTORNEY GENERAL
SEP 11 1970

RECEIVED
SEP 11 1970
O.C.D. HOBBS, OFFICE

N. MEXICO OIL CONSERVATION COMMISS
WELL LOCATION AND ACREAGE DEDICATION PLAT

Form C-102
 Supersedes C-128
 Effective 1-1-65

All distances must be from the outer boundaries of the Section

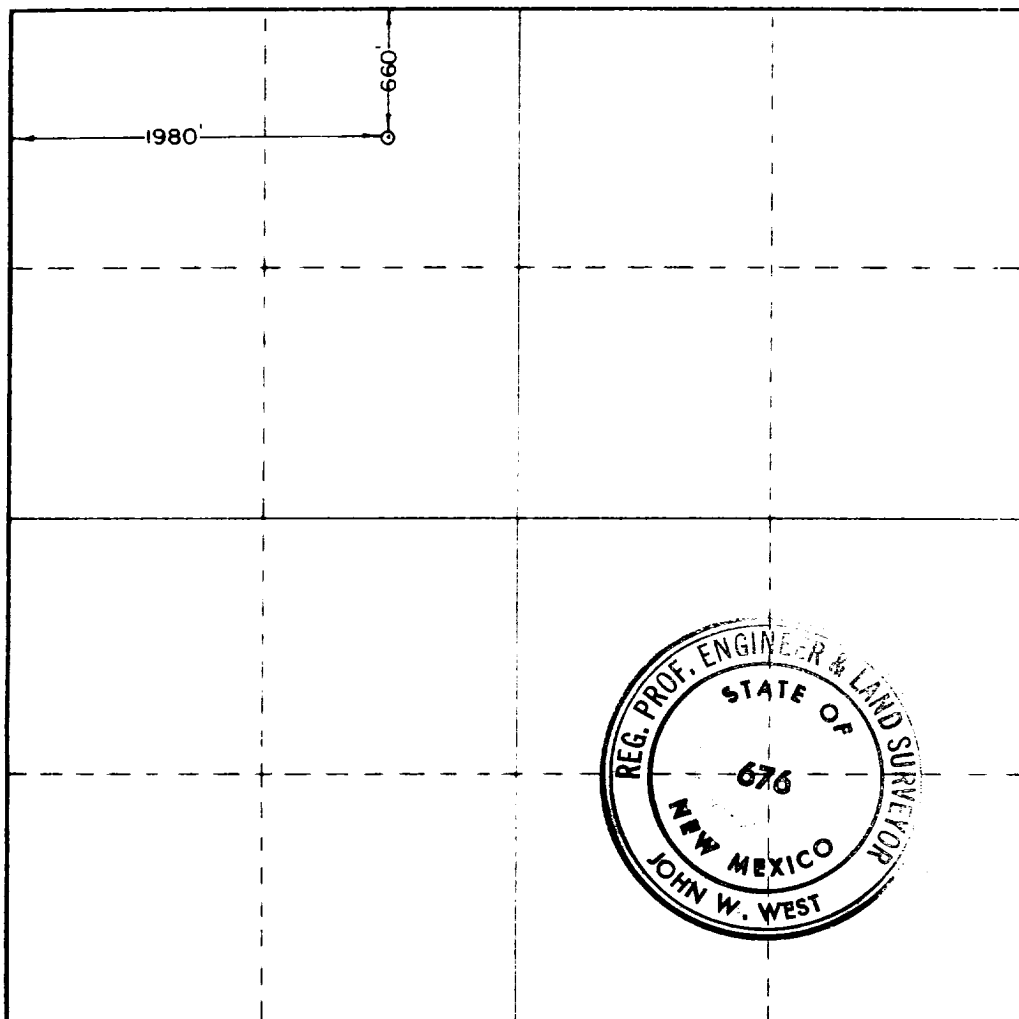
Operator MARTINDALE PETROLEUM COMPANY		Lease CLOSSON "B" FED.		Well No. 27
Part Letter C	Section 19	Township 22 SOUTH	Range 36 EAST	County LEA
Actual Surface Location of Well: 660 feet from the NORTH line and 1980 feet from the WEST line				
Ground Level Elev. 3572.2	Producing Formation TATAS-7R		Flow JALMAT	Dedicated Acreage: 40 Acres

1. Outline the acreage dedicated to the subject well by colored pencil or hatchure marks on the plat below.
2. If more than one lease is dedicated to the well, outline each and identify the ownership thereof (both as to working interest and royalty)
3. If more than one lease of different ownership is dedicated to the well, have the interests of all owners been consolidated by communitization, unitization, force-pooling, etc?

☐ Yes ☐ No If answer is "yes," type of consolidation _____

If answer is "no," list the owners and tract descriptions which have actually been consolidated (Use reverse side of this form if necessary.) _____

No allowable will be assigned to the well until all interests have been consolidated (by communitization, unitization, forced-pooling, or otherwise) or until a non-standard unit, eliminating such interests, has been approved by the Commission.



CERTIFICATION

I hereby certify that the information contained herein is true and complete to the best of my knowledge and belief.

Name *John W. West*
 Position **Secretary-Treasurer**

Company **MARTINDALE PETROLEUM CORP.**

Date **August 8, 1979**

I hereby certify that the well location shown on this plat was plotted from field notes of actual surveys made by me or under my supervision, and that the same is true and correct to the best of my knowledge and belief.

Date Surveyed **JULY 17TH, 1979**

Registered Professional Engineer and/or Land Surveyor

John W. West
 Certificate No. **John W. West 676**

Ronald J. Eidson 3239

0 330 660 990 1320 1650 1980 2310 2640 2000 1500 1000 500 0

ATTACHMENT FORM 9-331-C

MARTINDALE PETROLEUM CORPORATION

CLOSSON "B" LEASE - federal lease no. LC 030132 (b)

1. Surface Formation: Quaternary Alluvium
2. Estimated tops of geologic markers:

Base salt	3410
Yates	3550
Seven Rivers	3795
3. Estimated depth of mineral-bearing formations:

Fresh water	80 - 200
Yates	3550 oil and gas
Seven Rivers	3795 oil and gas
4. Casing program:

Hole Size	Size of Casing	Weight per ft.	Cond.	Grade	Depth	Sacks Cement	Est. Top Cement
12 1/4	8 5/8	24#	new	K-55	400	250	circ
7 7/8	5 1/2	15.5#	new	K-55	3900	750	circ
5. Blowout Preventor: 10" Cameron SS series 900 double hydraulic with Payne Closing unit. See Exhibit "C".
6. Mud Program: 0-400 native spud mud, 34 viscosity, weight 8.9#; 400-3500 brine water; 3500-3900 salt base mud viscosity 35-38, weight 10.1#, water loss 20, 2% oil.
7. Auxiliary Equip: Kelly valve, safety sub with full opening valve, drill pipe float valve.
8. Logging & Testing: No drillstem tests or coring anticipated. Logs to consist of Gamma Ray Compensated Neutron Formation Density, Dual laterlog, RXO.
9. Anticipated pressures and potential hazards: The Closson "B" #21 in Section 30 indicates that the maximum pressure will be less than 1000# and that hydrogen sulfide will not be encountered.
10. Starting date and duration: Starting date will be determined by date of approval and availability of Cactus Drilling Company rig. Operations are expected to be completed in 14 days.

MULTI-POINT SURFACE USE AND OPERATIONS PLAN

MARTINDALE PETROLEUM CORPORATION

CLOSSON "B" LEASE - federal lease LC 030132 (b)

1. Existing Roads:

Exhibit "A" is a portion of a Lea County ownership map showing the location of a paved oil field road on the west side of Section 19, thence north a mile, thence east 9 miles, thence north 2 miles to Eunice, New Mexico.

2. Planned Access Road:

As shown on Exhibit "B" an existing road from Closson "B" #13 curves to the northeast 400 feet prior to reaching the Closson "B" #25. This road will be releveled and resurfaced using six inches of caliche, water, compacted and graded. At a point due west of #26 a road will be constructed to the location for #26. At a point due north of #29, a road will be constructed to the location for #29. At a point due south of #28, a road will be constructed to the location for #28. At a point due east of #14, a road will be constructed to the location for #27. (Exhibit "B").

All roads will have six inches of caliche, water, compacted and graded. Maximum grade will be 3%. There will be no turnouts, culverts, cut or fill, gates or cattleguards required.

3. Location of Existing Wells:

Exhibit "A" shows all existing wells within a radius of three miles.

4. Location of Existing and Proposed Facilities:

Exhibit "B" shows the location of the present tank battery. The flowline will be laid directly to the tank battery, wells #26, 27, 28 and 29 will flow into Battery 1, indicated as B-1 on the exhibit.

5. Water Supply:

All water required for drilling and road construction will be hauled.

6. Source of construction materials:

Caliche for surfacing the road and the well pad will be obtained from an existing pit in the SW/4 SE/4 Sec. 12, T-22S, R-37E. It is a State caliche pit.

7. Methods of Handling Waste Disposal:

Drill cuttings will be disposed of in the drilling pits. Drilling fluids will be allowed to evaporate in the drilling pits until pits are dry. Water produced during test will be disposed of in the drilling pits. Oil produced during test will be stored in test tanks until transferred to tank battery for sale. Current laws and regulations pertaining to the disposal of human waste will be complied with.

Trash, waste paper, garbage and junk will be buried in a separate trash pit and covered with a minimum of 24 inches of dirt. All waste material will be contained to prevent scattering by the wind. Location of trash pit is shown on Exhibit "D". All trash and debris will be buried or removed from the wellsite within 30 days after finishing drilling and/or completion operations.

8. Ancillary Facilities:

None required.

9. Wellsite Location:

Exhibit "D" shows the relative location and dimensions of the well pad, mud pits, reserve pit and location of major rig components. No cut or fills will be required to level the well pad. The reserve pit will be plastic lined.

MARTINDALE PETROLEUM CORPORATION

CLOSSON "B" LEASE - Surface Use Plan

page 2

10. Plans for restoration of the surface:

After completion of drilling and/or completion operations, all equipment and other material not needed for operations will be removed. Pits will be filled and location cleaned of all trash and junk to leave the wellsite in an aesthetically pleasing condition as possible. All unguarded pits containing fluids will be fenced until they are filled. After abandonment of the well, any special rehabilitation and or revegetation requirements of the surface management agency will be complied with and accomplished as expeditiously as possible. Weather permitting, all pits will be filled and levelled within 90 days after abandonment.

11. Other Information:

Topography: The land surface in the vicinity is a relatively level semi-desert plain. The soil consists of 12" to 18" of sand on a caliche base. Flora and fauna consist of vegetative cover, is sparse and consists of mesquite, shinnery and native grass. Wildlife consists of coyotes, rabbits, rodents, reptiles, dove, quail and crows. There are no ponds or streams. There is no residence within a radius of three miles. Exhibit "B" shows the adjacent tank batteries, gas water and oil lines. No archeological, historical or cultural sites are observed in the area. Land use is grazing and hunting in season. The wellsite is on federal surface.

12. Operator's Representatives:

The field representative responsible for assuring compliance with the approved surface use and operations plan are as follows:

Burton Veteto
2017 North Fowler
Hobbs, NM 88240
505/397-1191 - Off.
505/397-1773 - Res.

Mark Veteto
609 E. Green Acres
Hobbs, NM 88240
505/397-1191 - Off.
505/393-9532 - Res.
505/397-3291, unit #2430 - mobil

13. Certification:

I hereby certify that persons under the direct supervision of Martindale Petroleum Corporation have inspected the proposed drillsite and access route; that he/they are familiar with the conditions which presently exist; that the statements made in this plan are, to the best of my knowledge true and correct; and the work associated with the operations proposed herein will be performed by Martindale Petroleum, its contractors and sub-contractors in conformity with this plan and the terms and conditions under which it is approved.

MARTINDALE PETROLEUM CORPORATION


Mrs. Jo Johnson
Secretary-Treasurer

August 21, 1979
Revised

[illegible]

4.B.P. 1
5-1327
2-11 2575
101531
2-11 2575

Marine

Service
1-132
Tr. 2

Tr. 3
UNIT

hermerhorn
et al
E-3962
Bob
Tr. 6 Cobb
Roy.

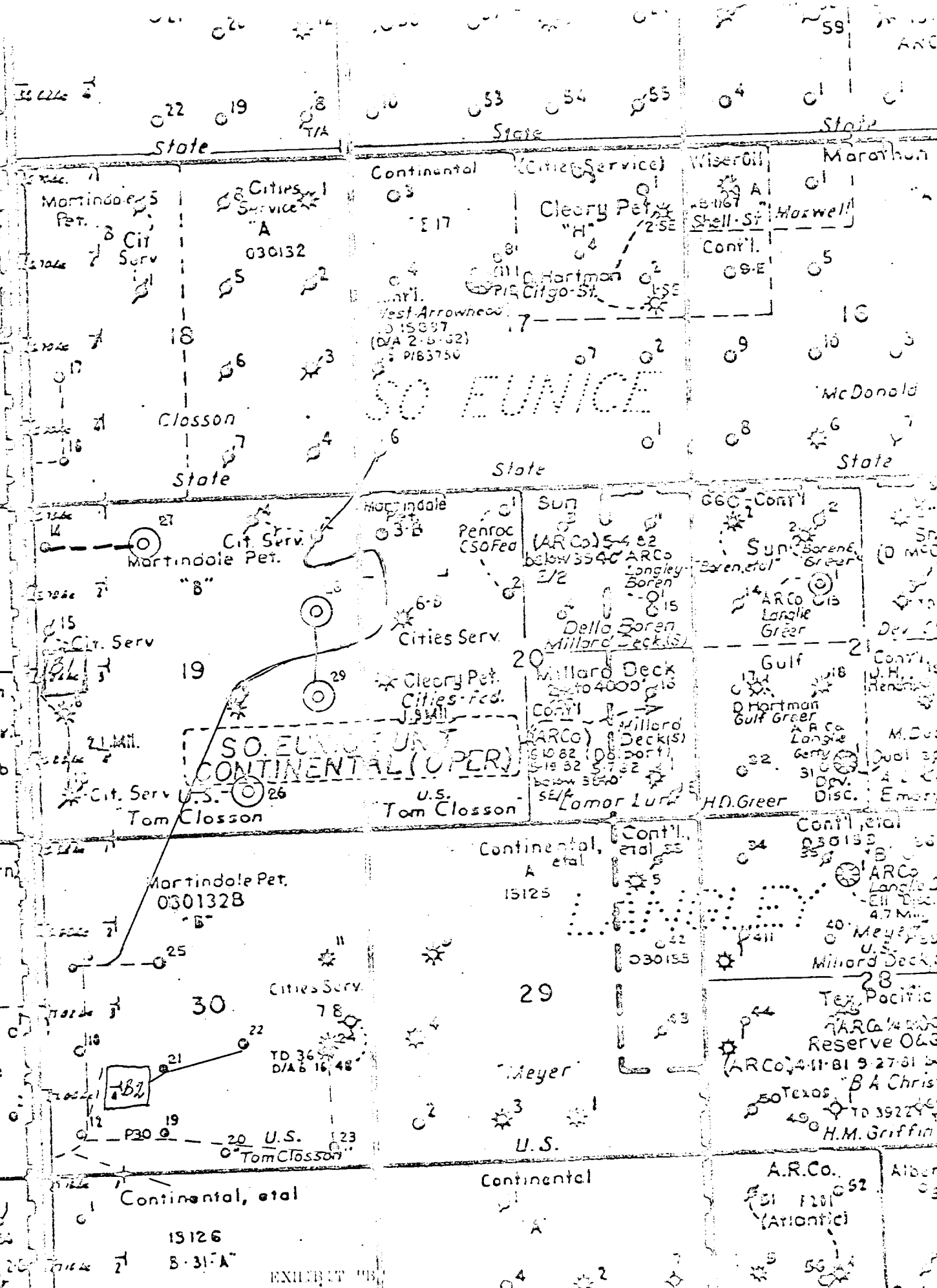
OPER.

hermerhorn
Cobb et al
3-1357
So Roy.

Tr. 7

Tr. 9
J.R. Cone
378 48

Antwell
Tr. 10



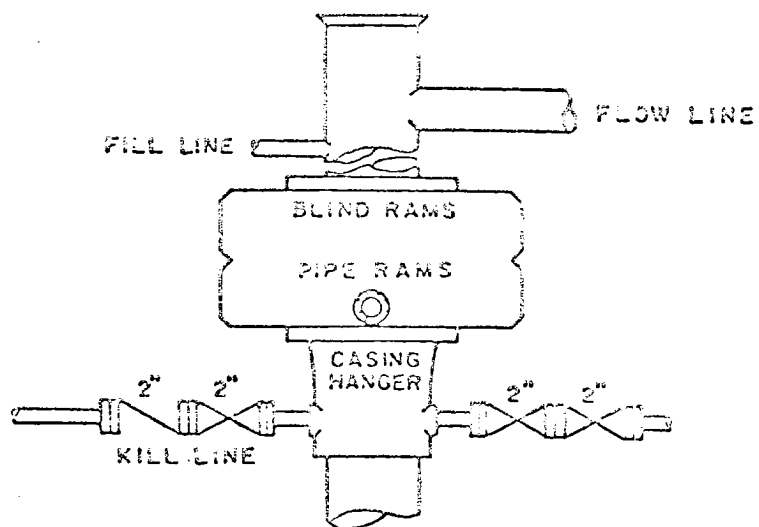


Exhibit "C"

RECEIVED

SEP 11 1966

O.C.D. HOBBS, OFFICE