

NEW MEXICO OIL CONSERVATION COMMISSION
WELL LOCATION AND ACREAGE DEDICATION PLAT

Form C-102
Supersedes C-128
Effective 1-1-65

All distances must be from the outer boundaries of the Section.

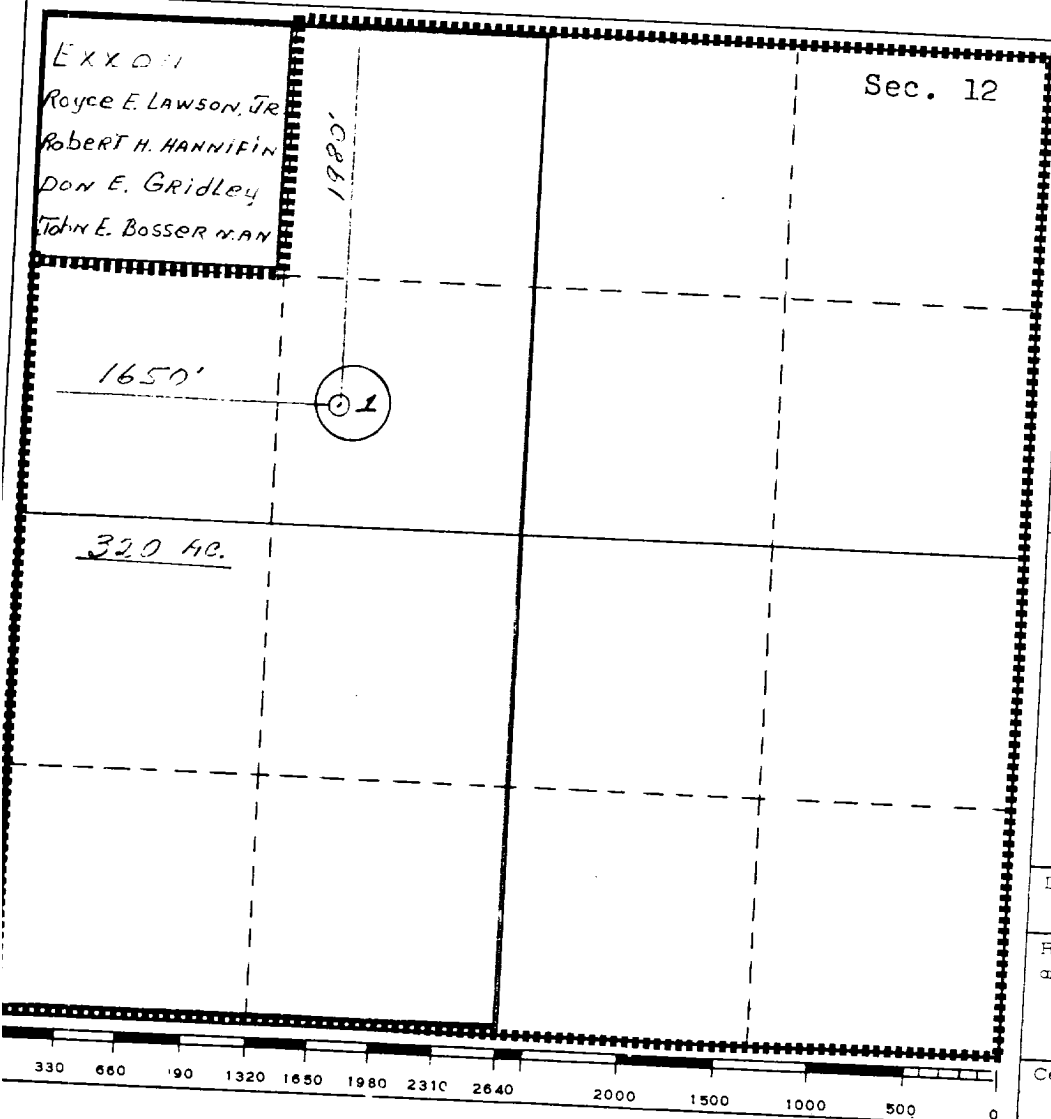
Operator Texaco Inc.			Lease New Mexico "DU" State		Well No. 1
Unit Letter F	Section 12	Township T-22-S	Range R-34-E	County Lea	
Actual Footage Location of Well: 1980 feet from the North line and 1650 feet from the West line Sec. 12					
Ground Level Elev. 3544'	Producing Formation Morrow	Pool Gramma Ridge, E. (Morrow)		Dedicated Acreage: 320 Acres	

1. Outline the acreage dedicated to the subject well by colored pencil or hatchure marks on the plat below.
2. If more than one lease is dedicated to the well, outline each and identify the ownership thereof (both as to working interest and royalty).
3. If more than one lease of different ownership is dedicated to the well, have the interests of all owners been consolidated by communitization, unitization, force-pooling, etc?

☒ Yes ☐ No If answer is "yes," type of consolidation Communitization

If answer is "no," list the owners and tract descriptions which have actually been consolidated. (Use reverse side of this form if necessary.)

No allowable will be assigned to the well until all interests have been consolidated (by communitization, unitization, forced-pooling, or otherwise) or until a non-standard unit, eliminating such interests, has been approved by the Commission.



CERTIFICATION	
I hereby certify that the information contained herein is true and complete to the best of my knowledge and belief.	
Name	<u>B. L. Eiland</u>
Position	Division Surveyor
Company	Texaco Inc.
Date	September 26, 1979
I hereby certify that the well location shown on this plat was plotted from field notes of actual surveys made by me or under my supervision, and that the same is true and correct to the best of my knowledge and belief.	
August 27, 1979	
Date Surveyed	<u>B. L. Eiland</u>
Registered Professional Engineer and/or Land Surveyor	
B. L. Eiland	
Certificate No.	4386

RECEIVED
OCT 16 1968
Q.C.D. HOMES, OFFICE