

WELL CLASS		INIT		FIN		USE CODE	
FORMATION		DATUM		FORMATION		DATUM	
3505' (GREG)				PRD 3759'			

CONTR Cactus 3503' CL PD 3800' RT

6-6-80
6-13-80
7-11-80
7-21-80
8-25-80

F.R. 10-80
(Queen)
TD 1270'; WOC
TD 3800'; WOC
TD 3800'; PBB 3759'; Swbg. & Flwg
Perf (Queen) 3575-3728' w/16 shots (overall)
Acid (2575-3728') 1600 gals (15%)
Frac (3575-3728') 20,000 gals + 134,000# sd +
20,000 gals; CCL
Swbg & Flwg 75 BF (10% oil) w/SSG (3575-3728')
TD 3500'; FWC 3759'; WOSP
Flwd @ 240 MCF/D + 16 SO + 3 BW in 24 hrs
then 21/2 hrs @ 175# (3575-3728')
TD 3800'; PBB 3759'; Complete
100-110% Frac 1341', Yates 2668',
Sever 3465', Queen 3465', Grayburg
3728'
LOGS RPT. UGL, ORL, CNEL, CNL, CALP, CCL
8-5-33 NM

LEA
CONOCO, INC.

Eumont
111 SEMU Eumont
Sec 26, T20S, R37E

NM
Page #2

8-30-80 COMPLETION ISSUED

8-5-33 NM
LC 30-025-70125-80

**NEW MEXICO OIL CONSERVATION COMMISSION
WELL LOCATION AND ACREAGE DEDICATION PLAT**

Form C-102
Supersedes C-128
Effective 1-1-65

All distances must be from the outer boundaries of the Section.

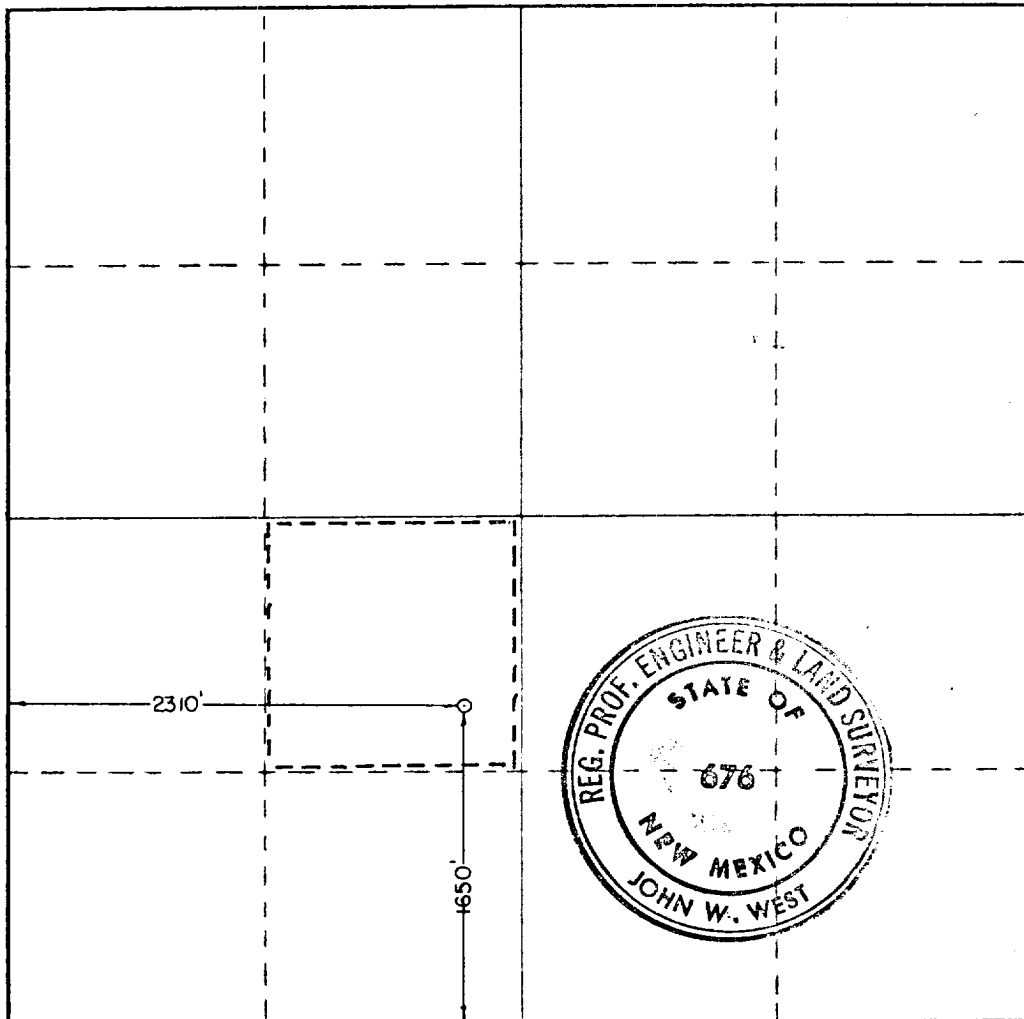
Operator CONTINENTAL OIL COMPANY			Lease SEMU EUMONT		Well No. 111
Unit Letter K	Section 26	Township 20 SOUTH	Range 37 EAST	County LEA	
Actual Enclosure Location of Well: 1650 feet from the SOUTH line and 2310 feet from the WEST line					
Ground Level Elev. 3503.2	Producing Formation QUEEN		Pool EUMONT QUEEN GAS		Dedicated Acreage: 40 Acres

1. Outline the acreage dedicated to the subject well by colored pencil or hachure marks on the plat below.
2. If more than one lease is dedicated to the well, outline each and identify the ownership thereof (both as to working interest and royalty).
3. If more than one lease of different ownership is dedicated to the well, have the interests of all owners been consolidated by communitization, unitization, force-pooling, etc?

☐ Yes ☐ No If answer is "yes," type of consolidation _____

If answer is "no," list the owners and tract descriptions which have actually been consolidated. (Use reverse side of this form if necessary.) _____

No allowable will be assigned to the well until all interests have been consolidated (by communitization, unitization, forced-pooling, or otherwise) or until a non-standard unit, eliminating such interests, has been approved by the Commission.



CERTIFICATION

I hereby certify that the information contained herein is true and complete to the best of my knowledge and belief.

Name *Wm. A. Dutton*
Position
Administrative Supervisor

Company **CONOCO INC.**

Date **7/25/80**

I hereby certify that the well location shown on this plat was plotted from field notes of actual surveys made by me or under my supervision, and that the same is true and correct to the best of my knowledge and belief.

Date Surveyed
JUNE 28TH, 1979

Registered Professional Engineer and/or Land Surveyor

John W. West
Certificate No. **John W. West**

Ronald J. Eidson

0 330 660 990 1320 1650 1980 2310 2640 2970 3300 3630 3960 4290 4620 4950 5280 5610 5940 6270 6600