

**NEW MEXICO OIL CONSERVATION COMMISSION
WELL LOCATION AND ACREAGE DEDICATION PLAT**

Form C-102
Supersedes C-128
Effective 1-1-65

All distances must be from the outer boundaries of the Section.

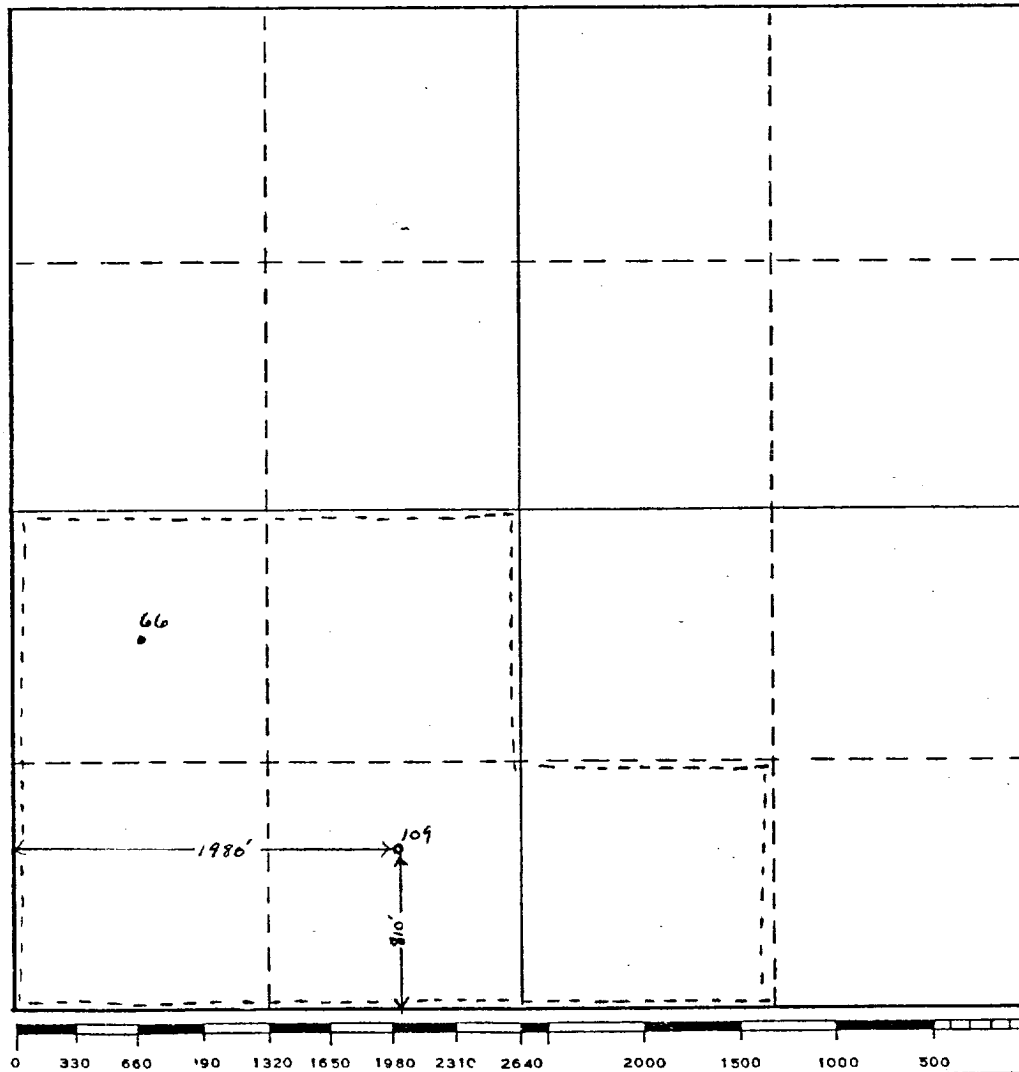
Operator CONOCO INC.			Lease SEMI EUMONT		Well No. 109
Unit Letter N	Section 14	Township 20 SOUTH	Range 37 EAST	County LEA	
Actual Footage Location of Well: 810 feet from the SOUTH line and 1980 feet from the WEST line					
Ground Level Elev. 3540	Producing Formation QUEEN		Pool EUMONT QUEEN GAS		Dedicated Acreage: 200 Acres

1. Outline the acreage dedicated to the subject well by colored pencil or hachure marks on the plat below.
2. If more than one lease is dedicated to the well, outline each and identify the ownership thereof (both as to working interest and royalty).
3. If more than one lease of different ownership is dedicated to the well, have the interests of all owners been consolidated by communitization, unitization, force-pooling, etc?

☐ Yes ☐ No If answer is "yes," type of consolidation _____

If answer is "no," list the owners and tract descriptions which have actually been consolidated. (Use reverse side of this form if necessary.) _____

No allowable will be assigned to the well until all interests have been consolidated (by communitization, unitization, forced-pooling, or otherwise) or until a non-standard unit, eliminating such interests, has been approved by the Commission.



CERTIFICATION

I hereby certify that the information contained herein is true and complete to the best of my knowledge and belief.

Name
Wm A. Butterfield
Position
ADMINISTRATIVE SUPERVISOR
Company
CONOCO INC.
Date
7/15/80

I hereby certify that the well location shown on this plat was plotted from field notes of actual surveys made by me or under my supervision, and that the same is true and correct to the best of my knowledge and belief.

Date Surveyed

Registered Professional Engineer and/or Land Surveyor

Certificate No.

COUNTY LEA FIELD Eumont STATE NM
 OPR CONOCO, INC. API 30-025-26745
 NO 109 LEASE SEMU Eumont MAP
 Sec 14, T20S, R37E CO-ORD
 810' FSL, 1980' FWL of Sec 8-1-21 NM
 7 mi SW/Nadine SPD 5-20-80 CMP 6-26-80

LOG	WELL CLASS: INIT D FINDG LSE. CODE			
	FORMATION	DATUM	FORMATION	DATUM
8 5/8" at 1360' w/652 sx				
5 1/2" at 3825' w/901 sx				
2 3/8" at 3548'				
	ID 3825' (QUEEN)		PBD 3783'	

IP (Queen) Perfs 3564-3694' F 346 MCFGPD. Pot based on 24
 hr test thru 32/64" chk. GOR (NR); gty (NR); CP 250#; TP 60#

P.L.C.: El Paso Natural Gas

CONTR Cactus OPRSELEV 3540'GL, 3552'KB PD 3800' RT

F.R. 3-31-80
 5-23-80 Drlg 1338'
 5-29-80 TD 3825'; WOCT
 5-23-80 TD 3825'; PBD 3783'; SI
 Perf (Queen) @ 3564', 3577', 3586', 3592',
 3598', 3602', 3603', 3629', 3633', 3653', 3655',
 3694' w/1 SPI
 Acid (3564-3694') 1100 gals (15% HEFE HCL)
 Frac (3564-3694') 32,000 gals + 150,000# sd +
 63 tons CO2
 6-27-80 TD 3825'; PBD 3783'; Tstg
 7-3-80 TD 3825'; PBD 3783'; WOSP
 Flwd @346 MCFGPD thru 32/64" chk, TP
 60# (3564-3694')
 7-28-80 TD 3835'; PBD 3783'; Complete
 LOGS RUN: GRL, CNL, DILL, CALP
 Rig Released 5-28-80
 8-2-80 COMPLETION ISSUED

8-1-21 NM
 TC 30-025-70157-80