

LEA
CONOCO, INC.

Eumont
110 SEMU Eumont
Sec 23, T20S, R37E

NM
Page 2

8-25-80

Continued

(Queen) FIVE POINT GAUGES:

Flwd 39 MCFGPD, chk NR, 30 mins, TP 148

Flwd 70 MCFGPD, chk NR, 30 mins, TP 146

Flwd 104 MCFGPD, chk NR, 30 mins, TP 144

Flwd 151 MCFGPD, chk NR, 30 mins, TP 140

Flwd 170 MCFGPD, chk NR, 30 mins, TP 137

LOG TOPS: Salt 1336, Base Salt 2508, Yates 2649,

Seven Rivers 2904, Queen 3438, Penrose 3546,

Grayburg 3716

LOGS RUN: GRL, CNL, DILL, CALP, CCL

BHT 90 deg @ 3800

Rig Released 6-3-80

8-30-80

COMPLETION ISSUED

8-5-32 NM

10-31-81

RE-ISSUED TO AMEND FINAL CLASS AND TO ADD CAO, F,
5 POINT GAUGES, BHT & PLC: Formerly reported as
DO

8-5-32 NM

IC 30-025-70158-80

NEW MEXICO OIL CONSERVATION COMMISSION
WELL LOCATION AND ACREAGE DEDICATION PLAT

Form C-102
Supersedes C-128
Effective 1-4-65

All distances must be from the outer boundaries of the Section.

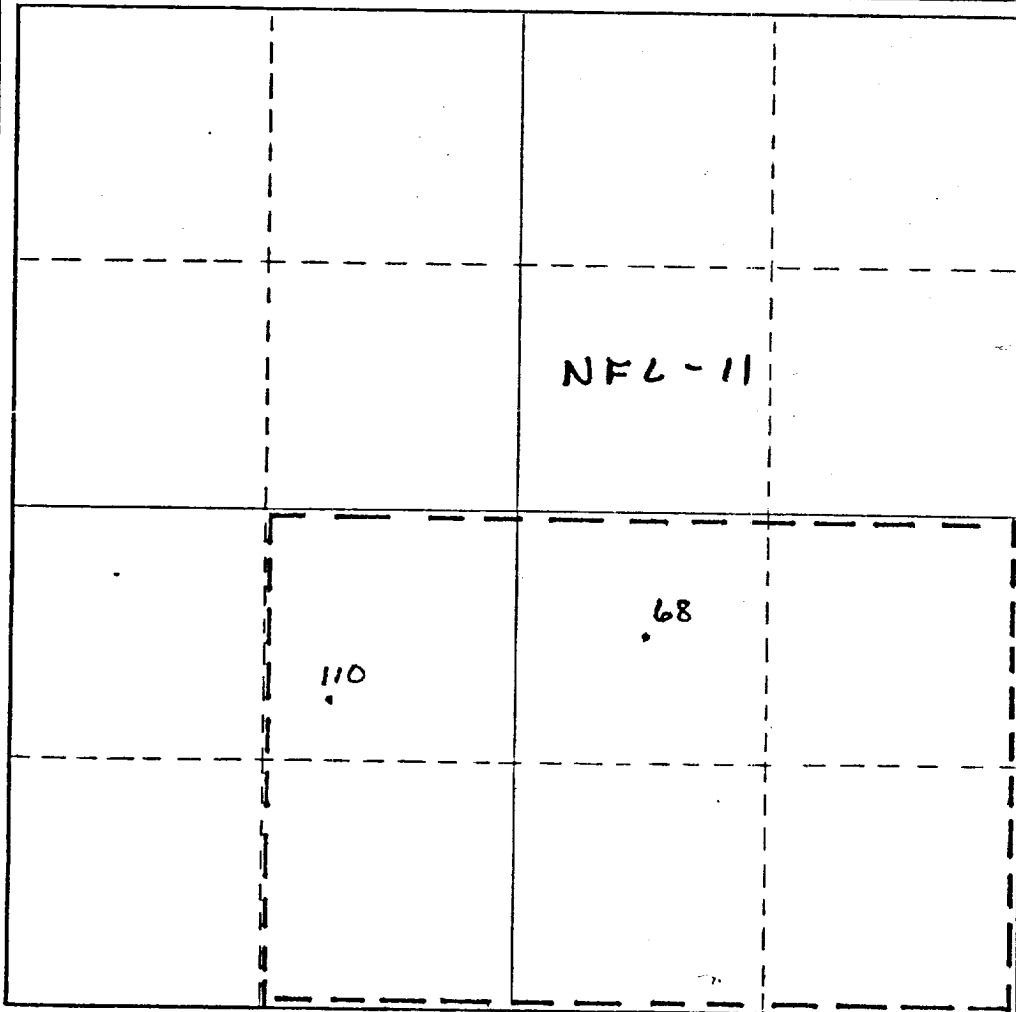
Operator CONOCO INC.			Lease SEMU EUMONT		Well No. 110
Unit Letter K	Section 23	Township 20 S	Range 37 E	County LEA	
Actual Footage Location of Well: 1650 feet from the SOUTH line and 1650 feet from the WEST line					
Ground Level Elev. 3524.7	Producing Formation QUEEN		Pool EUMONT QUEEN GAS		Dedicated Acreage: 240 Acres

1. Outline the acreage dedicated to the subject well by colored pencil or hachure marks on the plat below.
2. If more than one lease is dedicated to the well, outline each and identify the ownership thereof (both as to working interest and royalty).
3. If more than one lease of different ownership is dedicated to the well, have the interests of all owners been consolidated by communitization, unitization, force-pooling, etc?

☐ Yes ☐ No If answer is "yes," type of consolidation _____

If answer is "no," list the owners and tract descriptions which have actually been consolidated. (Use reverse side of this form if necessary.) _____

No allowable will be assigned to the well until all interests have been consolidated (by communitization, unitization, forced-pooling, or otherwise) or until a non-standard unit, eliminating such interests, has been approved by the Commission.



CERTIFICATION

I hereby certify that the information contained herein is true and complete to the best of my knowledge and belief.

Name
Maria E. Ford

Position
Adm. Supervisor

Company
CONOCO INC.

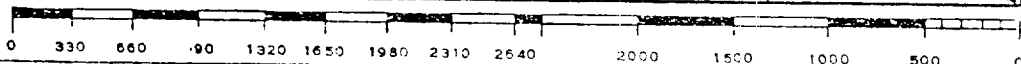
Date
4/6/81

I hereby certify that the well location shown on this plat was plotted from field notes of actual surveys made by me or under my supervision, and that the same is true and correct to the best of my knowledge and belief.

Date Surveyed

Registered Professional Engineer and/or Land Surveyor

Certificate No.



COUNTY	LEA	LEAD	Leibert	STATE	NM
OPR	CONOCO, INC.			API	30-025-26746
NO	110	LEASE	SEMU	Leibert	MAP
	Sec 23, T20S, R37E			CO-ORD	
	1650' FSL, 1650' FWL of Sec			8-5-32 NM	
	7 mi SW/Nadine			SPD 5-28-80	CMP 7-16-80
CSC	WELL CLASS: INIT D FIN DO LSE CODE				
8 5/8" at 1300' w/130 ex	FORMATION	DATUM	FORMATION	DATUM	
5 1/2" at 3500' w/1634 ex					
2 3/8" at 3500'					
	TD 3800' (GRBG)	PBD	3722'		
IP (Queen) Perfs 3551-3696' F 10 FOPD. Pot based on 24 hr test thru 31/64" chd. GOR 32,300; gty 35; CP 240#; TP 60#					
CONTR	Cactus	DEPTH	3525' GL	PD	3790' RT

T.R. 1-11-80
 (Queen)
 6-2-80 TD 3800'; Pred Log
 6-4-80 TD 3800'; WOCT
 6-27-80 TD 3800'; MLOT
 7-7-80 TD 3800'; PBD 3722'; SI
 Perf (Queen) @ 3551', 3562', 3567', 3571',
 3577', 3583', 3588', 3598', 3608', 3639',
 3650', 3658', 3677', 3696' w/1 SPI
 Acid (3551-3696') 1400 gals (15%)
 Frac (3551-3696') 34,000 gals + 144,000' sd
 F 11,000' gals CO2
 7-14-80 TD 3800'; PBD 3722'; Istg
 7-16-80 TD 3800'; PBD 3722'; WOSP
 Flwd 10 MO + Gas @ 323 MCFGPD in 24 hrs
 thru 31/64" chd, TP 60# (3551-3696')
 8-15-80 TD 3800'; PBD 3722'; Complete
 LOG TOF 11' Salt 1336', Base Salt 2508',
 Yates 2519', Seven Rivers 2904', 8-5-32 NM

LEA
CONOCO, INC.

Eumont
110 SEMU Eumont
Sec 23, T20S, R37E

NM
Page #2

8-25-80 Continued
Queen 3438', Penrose 3546', Grayburg
3716'
LOGS RUN: CRL, CNL, DILL, CALP, CCL
Rig Released 6-3-80

8-30-80 COMPLETION ISSUED

8-5-32 NM
IC 30-025-70158-80

**NEW MEXICO OIL CONSERVATION COMMISSION
WELL LOCATION AND ACREAGE DEDICATION PLAT**

Form C-102
Supersedes C-128
Effective 1-1-65

All distances must be from the outer boundaries of the Section

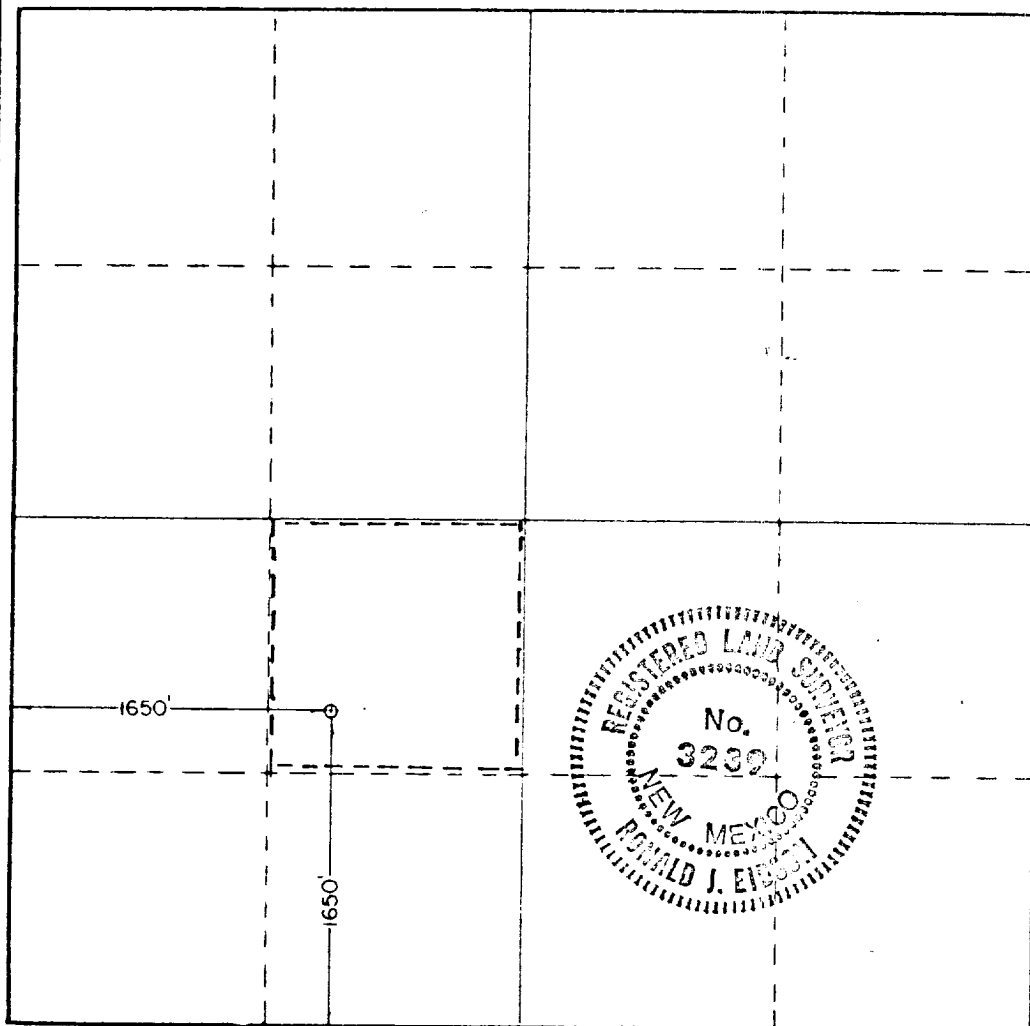
Operator CONTINENTAL OIL COMPANY		Lease SEMU EUMONT		Well No. 110	
Unit Letter K	Section 23	Township 20 SOUTH	Range 37 EAST	County LEA	
Actual Footage Location of Well: <div style="display: flex; justify-content: space-between;"> 1650 feet from the SOUTH line and 1650 feet from the WEST line </div>					
Ground Level Elev. 3524.7	Producing Formation QUEEN		Pool EUMONT QUEEN GAS		Dedicated Acreage: 40 Acres

1. Outline the acreage dedicated to the subject well by colored pencil or hachure marks on the plat below.
2. If more than one lease is dedicated to the well, outline each and identify the ownership thereof (both as to working interest and royalty).
3. If more than one lease of different ownership is dedicated to the well, have the interests of all owners been consolidated by communitization, unitization, force-pooling, etc?

☐ Yes ☐ No If answer is "yes," type of consolidation _____

If answer is "no," list the owners and tract descriptions which have actually been consolidated. (Use reverse side of this form if necessary.) _____

No allowable will be assigned to the well until all interests have been consolidated (by communitization, unitization, forced-pooling, or otherwise) or until a non-standard unit, eliminating such interests, has been approved by the Commission.



CERTIFICATION

I hereby certify that the information contained herein is true and complete to the best of my knowledge and belief.

Name
Wm A. Butterfield
Position

ADMINISTRATIVE SUPERVISOR

Company

CONOCO INC.

Date

7/25/80

I hereby certify that the well location shown on this plat was plotted from field notes of actual surveys made by me or under my supervision, and that the same is true and correct to the best of my knowledge and belief.

Date Surveyed

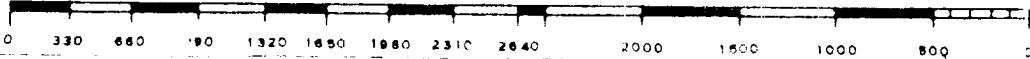
JUNE 27TH, 1979

Registered Professional Engineer
and or Land Surveyor

Ronald J. Eidson

Certificate No. **John W. West**

Ronald J. Eidson



**NEW MEXICO OIL CONSERVATION COMMISSION
WELL LOCATION AND ACREAGE DEDICATION PLAT**

Form C-102
Supersedes C-128
Effective 1-1-65

All distances must be from the outer boundaries of the Section

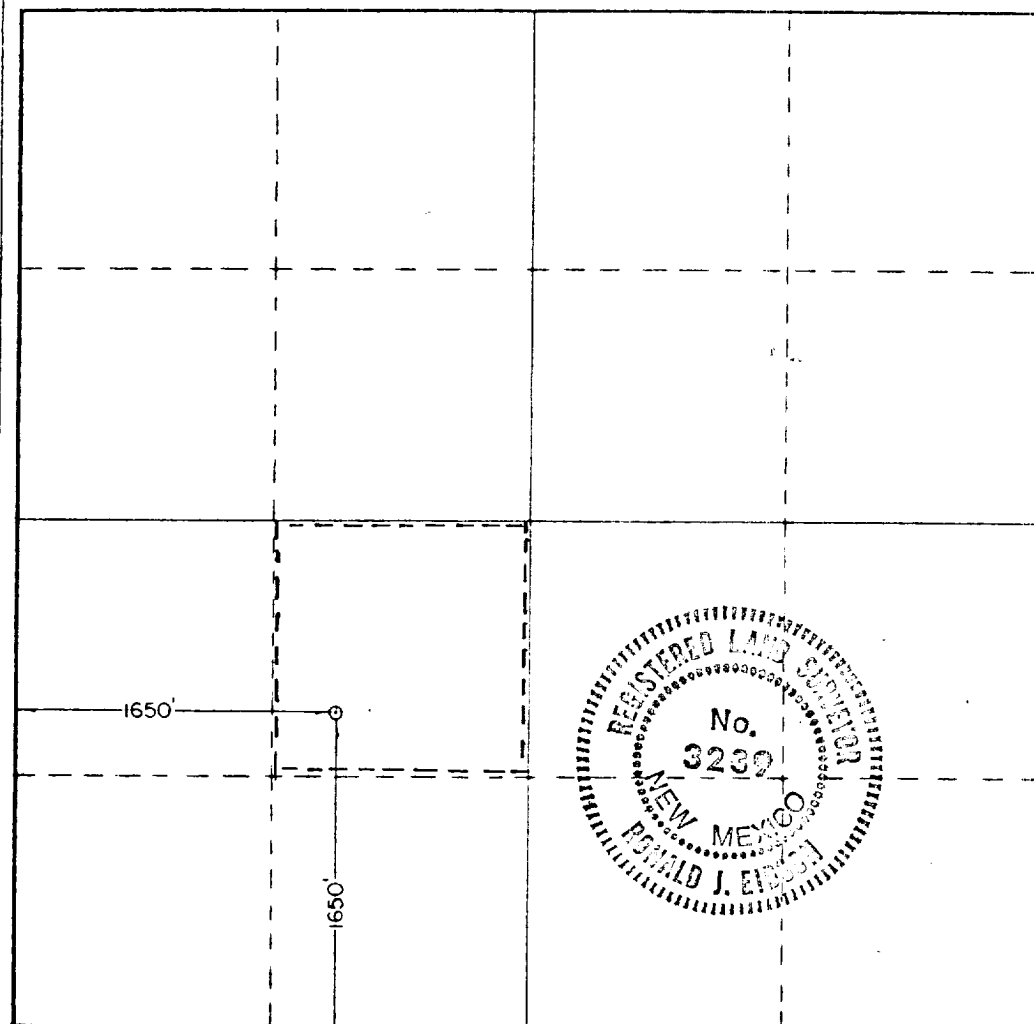
Operator CONTINENTAL OIL COMPANY		Lease SEMUR FUMONT		Well No. 110	
Unit Letter K	Section 23	Township 20 SOUTH	Range 37 EAST	County LEA	
Actual Footage Location of Well: <div style="display: flex; justify-content: space-between;"> 1650 feet from the SOUTH line and 1650 feet from the WEST line </div>					
Ground Level Elev. 3524.7	Producing Formation QUEEN		Foot ELIMONT QUEEN GAS		Dedicated Acreage: 40 Acres

- Outline the acreage dedicated to the subject well by colored pencil or hatchure marks on the plat below.
- If more than one lease is dedicated to the well, outline each and identify the ownership thereof (both as to working interest and royalty).
- If more than one lease of different ownership is dedicated to the well, have the interests of all owners been consolidated by communitization, unitization, force-pooling, etc?

☐ Yes ☐ No If answer is "yes," type of consolidation _____

If answer is "no," list the owners and tract descriptions which have actually been consolidated. (Use reverse side of this form if necessary.) _____

No allowable will be assigned to the well until all interests have been consolidated (by communitization, unitization, forced-pooling, or otherwise) or until a non-standard unit, eliminating such interests, has been approved by the Commission.



CERTIFICATION

I hereby certify that the information contained herein is true and complete to the best of my knowledge and belief.

Name
Wm. A. Butterfield

Position

ADMINISTRATIVE SUPERVISOR

Company

CONOCO INC.

Date

7/25/80

I hereby certify that the well location shown on this plat was plotted from field notes of actual surveys made by me or under my supervision, and that the same is true and correct to the best of my knowledge and belief.

Date Surveyed

JUNE 27TH, 1979

Registered Professional Engineer
and or Land Surveyor

Ronald J. Eidson

Certificate No. **John W. West**

Ronald J. Eidson

0 330 660 990 1320 1650 1980 2310 2640 2970 3300 3630 3960 4290 4620 4950 5280 5610 5940 6270 6600