

NEW MEXICO OIL CONSERVATION COMMISSION  
WELL LOCATION AND ACREAGE DEDICATION PLAT

Form O-100  
1-68 (Rev. 1-68)  
1-68

All distances must be from the outer boundaries of the Section

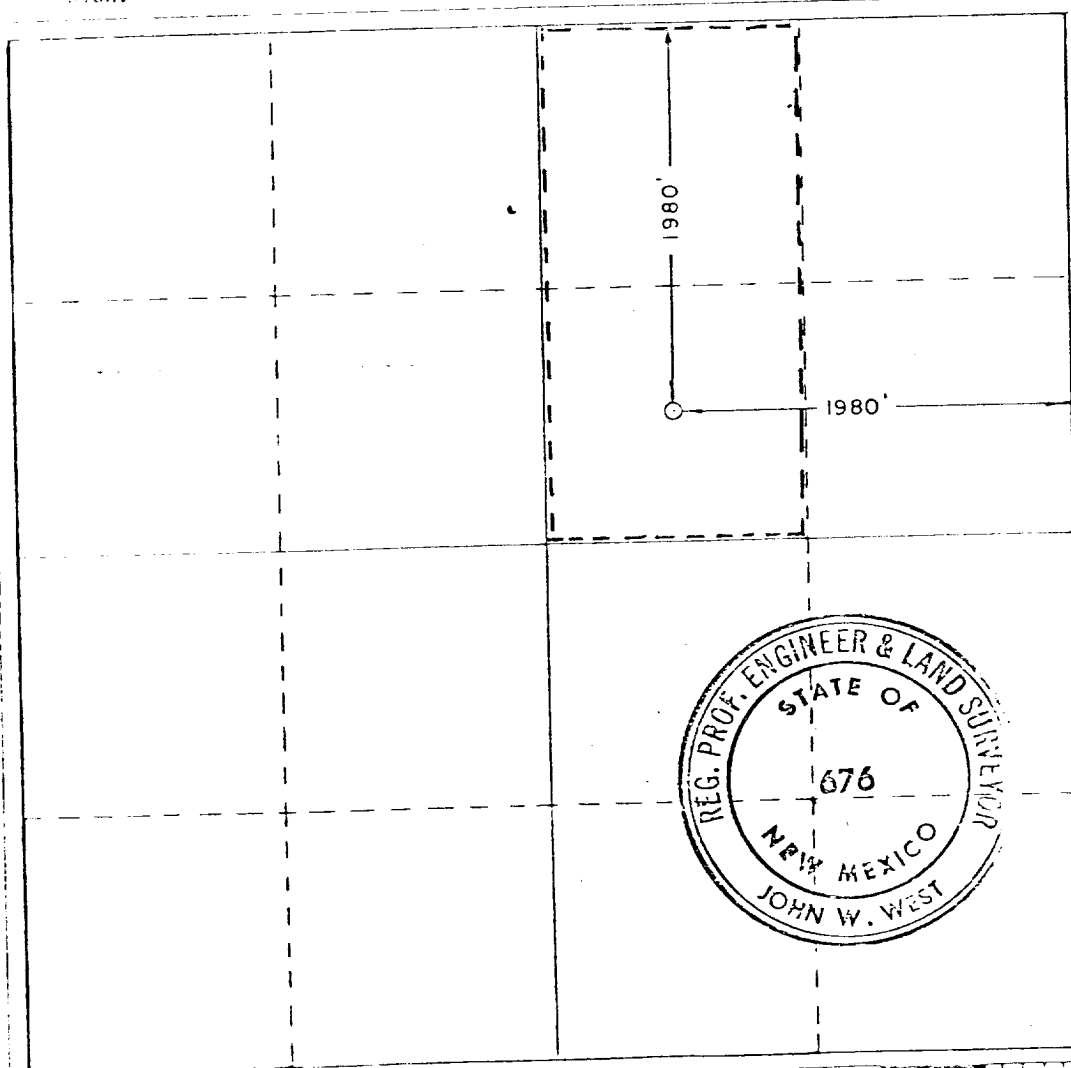
Operator <b>Conoco, Inc.</b>		Lease <b>Britt "B"</b>		Well No. <b>27</b>
Section <b>G</b>	Section <b>15</b>	Township <b>20 South</b>	Range <b>37 East</b>	County <b>Lea</b>
Actual Well Location of Well: <b>1980</b> feet from the <b>North</b> line and <b>1980</b> feet from the <b>East</b> line				
Ground Level Elev. <b>3559.1</b>	Producing Formation <b>Abc</b>	Pool <b>Undesignated Abc</b>	Dedicated Acreage: <b>80</b> Acres	

1. Outline the acreage dedicated to the subject well by colored pencil or hatchure marks on the plat below.
2. If more than one lease is dedicated to the well, outline each and identify the ownership thereof (both as to working interest and royalty).
3. If more than one lease of different ownership is dedicated to the well, have the interests of all owners been consolidated by communitization, unitization, force-pooling, etc?

☐ Yes ☐ No If answer is "yes," type of consolidation \_\_\_\_\_

If answer is "no," list the owners and tract descriptions which have actually been consolidated. (Use reverse side of this form if necessary.) \_\_\_\_\_

No allowable will be assigned to the well until all interests have been consolidated (by communitization, unitization, forced-pooling, or otherwise) or until a non-standard unit, eliminating such interests, has been approved by the Commission.



CERTIFICATION

I hereby certify that the information contained herein is true and complete to the best of my knowledge and belief.

Name \_\_\_\_\_  
Position **Administrative Supervisor**  
Company **Conoco Inc**  
Date **DEC 8 0 1980**

I hereby certify that the well location shown on this plat was plotted from field notes of actual surveys made by me or under my supervision, and that the same is true and correct to the best of my knowledge and belief.

Date Surveyed **Feb. 21, 1980**

Registered Professional Engineer and/or Land Surveyor

*John W. West*  
Certificate No. **JOHN W. WEST**  
**PATRICK A. ROMERO**  
**Ronald J. Faison**

676  
1-68  
2-19

**NEW MEXICO OIL CONSERVATION COMMISSION  
WELL LOCATION AND ACREAGE DEDICATION PLAT**

Form 102  
Sup. des C-128  
Effective 1-1-65

All distances must be from the outer boundaries of the Section

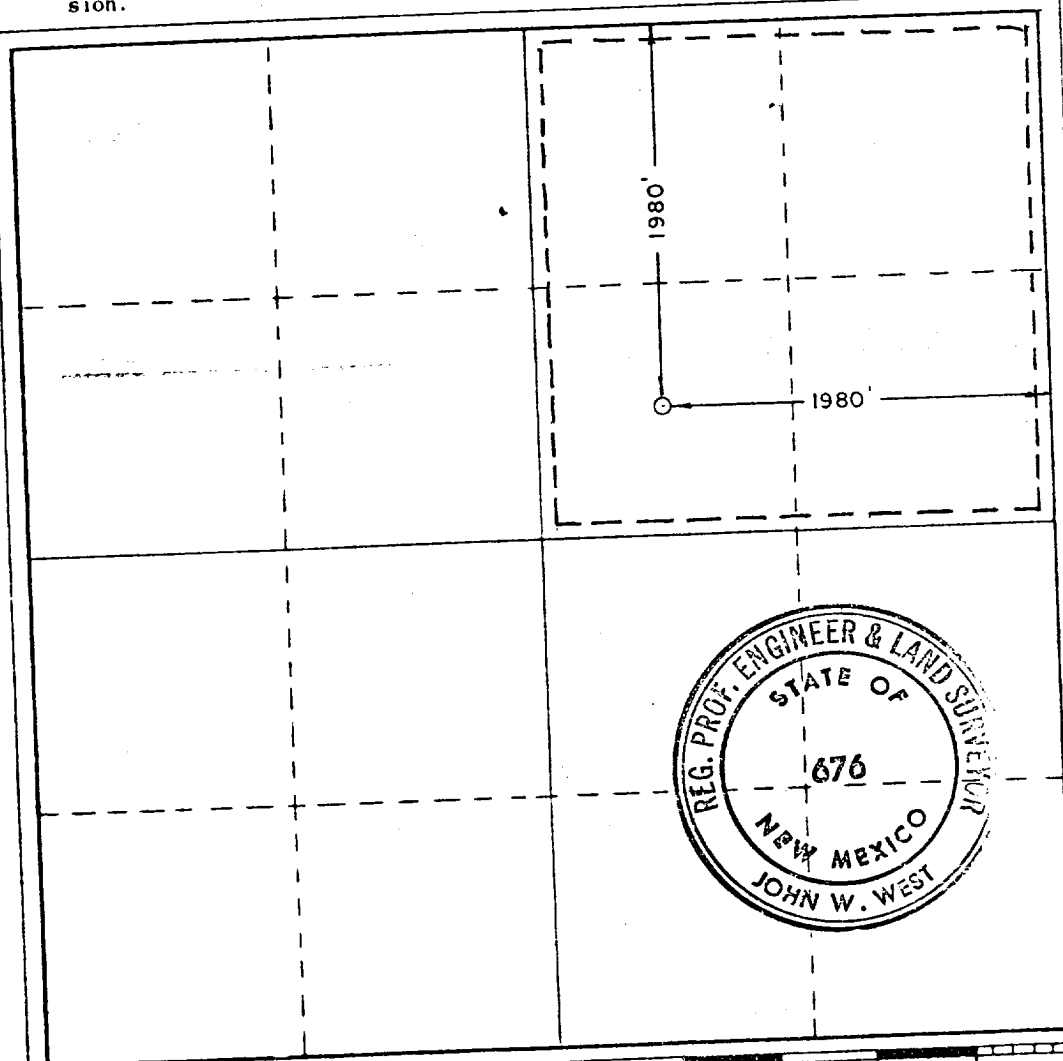
Operator <b>Conoco, Inc.</b>			Lease <b>Britt "B"</b>		Well No. <b>27</b>
Unit Letter <b>G</b>	Section <b>15</b>	Township <b>20 South</b>	Range <b>37 East</b>	County <b>Lea</b>	
Actual Footage Location of Well: <b>1980</b> feet from the <b>North</b> line and <b>1980</b> feet from the <b>East</b> line					
Ground Level Elev. <b>3559.1</b>	Producing Formation <b>Abo</b>	Pool <b>Undesignated Abo</b>		Dedicated Acreage: <b>160</b> Acres	

1. Outline the acreage dedicated to the subject well by colored pencil or hachure marks on the plat below.
2. If more than one lease is dedicated to the well, outline each and identify the ownership thereof (both as to working interest and royalty).
3. If more than one lease of different ownership is dedicated to the well, have the interests of all owners been consolidated by communitization, unitization, force-pooling, etc?

☐ Yes   ☐ No   If answer is "yes," type of consolidation \_\_\_\_\_

If answer is "no," list the owners and tract descriptions which have actually been consolidated. (Use reverse side of this form if necessary.) \_\_\_\_\_

No allowable will be assigned to the well until all interests have been consolidated (by communitization, unitization, forced-pooling, or otherwise) or until a non-standard unit, eliminating such interests, has been approved by the Commission.



**CERTIFICATION**

I hereby certify that the information contained herein is true and complete to the best of my knowledge and belief.

Name *John A. Butterfield*  
Position *Administrative Supervisor*  
Company *Conoco Inc.*

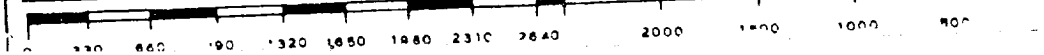
Date *December 5, 1980*

I hereby certify that the well location shown on this plat was plotted from field notes of actual surveys made by me or under my supervision, and that the same is true and correct to the best of my knowledge and belief.

Date Surveyed *Feb. 21, 1980*

Registered Professional Engineer and/or Land Surveyor

*John W. West*  
Certificate No. **JOHN W. WEST 676**  
**PATRICK A. ROMERO 684**  
**Ronald L. Fiddler 675**





COUNTY LEA FIELD Wildcat STATE NM  
 CONOCO INC. API 30-025-26941  
 27 LEASE Britt "B" MAP  
 Sec 15, T20S, R37E CO-ORD  
 1980 FNL, 1980 FEL of Sec 12-1-32 NM  
 4 mi SE/Monument SPD 8-5-80 CMP 12-29-80

13 3/8-1272-1035 sx  
 7-7935-3400 sx  
 2 3/8-6866

WELL CLASS: INIT D FIN WDD LSE. CODE			
FORMATION	DATUM	FORMATION	DATUM
TD 7935 (PSLV)		PBD 7700	

IP (Drinkard) Perfs 6664-6850 P 17 BOPD + 22 BW. Pot based  
 on 24 hr test. GOR 3647; gty 39  
 IP (Abo) Perfs 7046-56 F 1680 MCEGPD + 41 BW. Pot based on  
 24 hr test thru 20/64 chk. GOR (NR); gty (NR); CP Pkr; TP 1670

CONTR X-Pert

OPRSELEV 3559 GL

PD 7900 RT

F.R. 7-21-80  
 (Abo)  
 8-11-80 TD 1272; WOC  
 8-15-80 Drlg 3409  
 8-25-80 Drlg 7058  
 8-29-80 Drlg 7713 dolo  
 9-2-80 TD 7935; WOCT  
 9-12-80 TD 7935; PBD 7898; SI  
 Perf (Pennsylvanian) @ 7801, 7802, 7803, 7804,  
 7805, 7806, 7807, 7838, 7839, 7840, 7841, 7842  
 7843 w/1 SPI  
 Swbd dry (7801-43)  
 9-22-80 TD 7935; PBD 7700; Prep Run BHP Bomb  
 Perf (Pennsylvanian) @ 7759, 7760, 7761, 7767,  
 7768, 7769 w/1 SPI  
 Acid (7759-69) 100 gals  
 Swbd 20 BW (7759-69)  
 PB to 7700  
 Perf (Abo) @ 7046, 7052, 7053, 7055, 7056  
 w/1 SPI

12-1-32 NM

o LEA  
CONOCO INC.

Wildcat  
27 Britt "B"  
Sec 15, T20S, R37E

NM  
Page #2

9-22-80 Continued  
Acid (7046-56) 2200 gals (15% HCL)  
9-26-80 TD 7935; PBD 7700; SI  
10-10-80 TD 7935; PBD 7700; SI  
Perf (Drinkard) 6664-6850 w/19 shots (overall)  
Acid (6664-6850) 1900 gals (15%)  
Frac (6664-6850) 36,120 gals + sd  
Swbd 110 BF (30 Pct Oil) & Swbd Dry w/SG  
(6664-6850)  
1-26-81 TD 7935; PBD 7700; Complete  
Abo Zone completed 9-24-80 as discovery in  
the Skaggs Field  
Drinkard completed in Weir field  
LOG TOPS: Rustler 1240, Salado 1340, Tansill  
2510, Yates 2652, Seven Rivers 2910, Queen 3434,  
Grayburg 3720, Glorieta 5160, 12-1-32 NM

1-26-81 Continued  
Blinebry 5770, Tubb 6338, Drinkard 6652,  
Abo 6940  
LOGS RUN: GRL, CCL  
Rig Released 9-1-80  
12-6-80 TEMPORARY COMPLETION ISSUED  
1-31-81 RE-ISSUE OF SUSPENDED COMPLETION & TO AMEND  
ZONE: Formerly reported as Drinkard & Blinebry  
2-21-81 RE-ISSUED TO SHOW DUAL COMPLETION INFORMATION  
& TO ADD LOG TOPS  
4-4-81 RE-ISSUE TO AMEND FIELD & FINAL CLASS: Formerly  
reported as Weir & DO

12-1-32 NM  
IC 30-025-70357-80