

UNITED STATES
DEPARTMENT OF THE INTERIOR
GEOLOGICAL SURVEY

APPLICATION FOR PERMIT TO DRILL, DEEPEN, OR PLUG BACK

1a. TYPE OF WORK
DRILL ☒ DEEPEN ☐ PLUG BACK ☐

b. TYPE OF WELL
OIL WELL ☒ GAS WELL ☐ OTHER ☐
SINGLE ZONE ☒ MULTIPLE ZONE ☐

2. NAME OF OPERATOR
CONOCO INC.

3. ADDRESS OF OPERATOR
P. O. Box 450, Hobbs, N.M. 88240

4. LOCATION OF WELL (Report location clearly and in accordance with any State requirements.)
At surface
660' FNL & 1920' FWL
At proposed prod. zone

14. DISTANCE IN MILES AND DIRECTION FROM NEAREST TOWN OR POST OFFICE
1 mile
U. S. GEOLOGICAL SURVEY
HOBBS, NEW MEXICO

10. DISTANCE FROM PROPOSED*
LOCATION TO NEAREST
PROPERTY OR LEASE LINE, FT.
(Also to nearest drlg. unit line, if any)

18. DISTANCE FROM PROPOSED LOCATION*
TO NEAREST WELL, DRILLING, COMPLETED,
OR APPLIED FOR, ON THIS LEASE, FT.

21. ELEVATIONS (Show whether DF, RT, GR, etc.)

3513.7 GR

23. PROPOSED CASING AND CEMENTING PROGRAM

SIZE OF HOLE	SIZE OF CASING	WEIGHT PER FOOT	SETTING DEPTH	QUANTITY OF CEMENT
12 1/4"	8 5/8"	24#	1450'	696 SK. - Circ.
7 7/8"	5 1/2"	15.5#	6170'	1129 SK. - Circ.

It is proposed to drill a straight hole to a TD of 6170' & complete it as a Blinberry oil well.

See attachments for 10-point well plan, 13-point surface use plan, & BOP specs.

IN ABOVE SPACE DESCRIBE PROPOSED PROGRAM: If proposal is to deepen or plug back, give data on present productive zone and proposed new productive zone. If proposal is to drill or deepen directionally, give pertinent data on subsurface locations and measured and true vertical depths. Give blowout preventer program, if any.

24.

SIGNED D. E. Bingham

TITLE Administrative Supervisor

DATE 9-22-80

(This space for Federal or State office use)

PERMIT NO.

APPROVAL DATE

APPROVED BY

TITLE

DATE OCT 14 1980

CONDITIONS OF APPROVAL, IF ANY:

USGS-6
NMFU-4
FILE
Rel. folder - 2

*See Instructions On Reverse Side

30-025-27105
5. LEASE DESIGNATION AND SERIAL NO.
LC 031695 (B)
6. IF INDIAN, ALLOTTEE OR TRIBE NAME
7. UNIT AGREEMENT NAME
NMFU
8. FARM OR LEASE NAME
Warren Unit
9. WELL NO.
84
10. FIELD AND POOL, OR WILDCAT
Blinberry Oil & Gas
11. SEC., T., R., M., OR BLK.
AND SURVEY OR AREA
Sec. 33, T-20S R-38E
12. COUNTY OR PARISH
Lea
13. STATE
NM

NEW MEXICO OIL CONSERVATION COMMISSION
WELL LOCATION AND ACREAGE DEDICATION PLAT

Form C-102
Supersedes C-128
Effective 1-1-65

All distances must be from the outer boundaries of the Section.

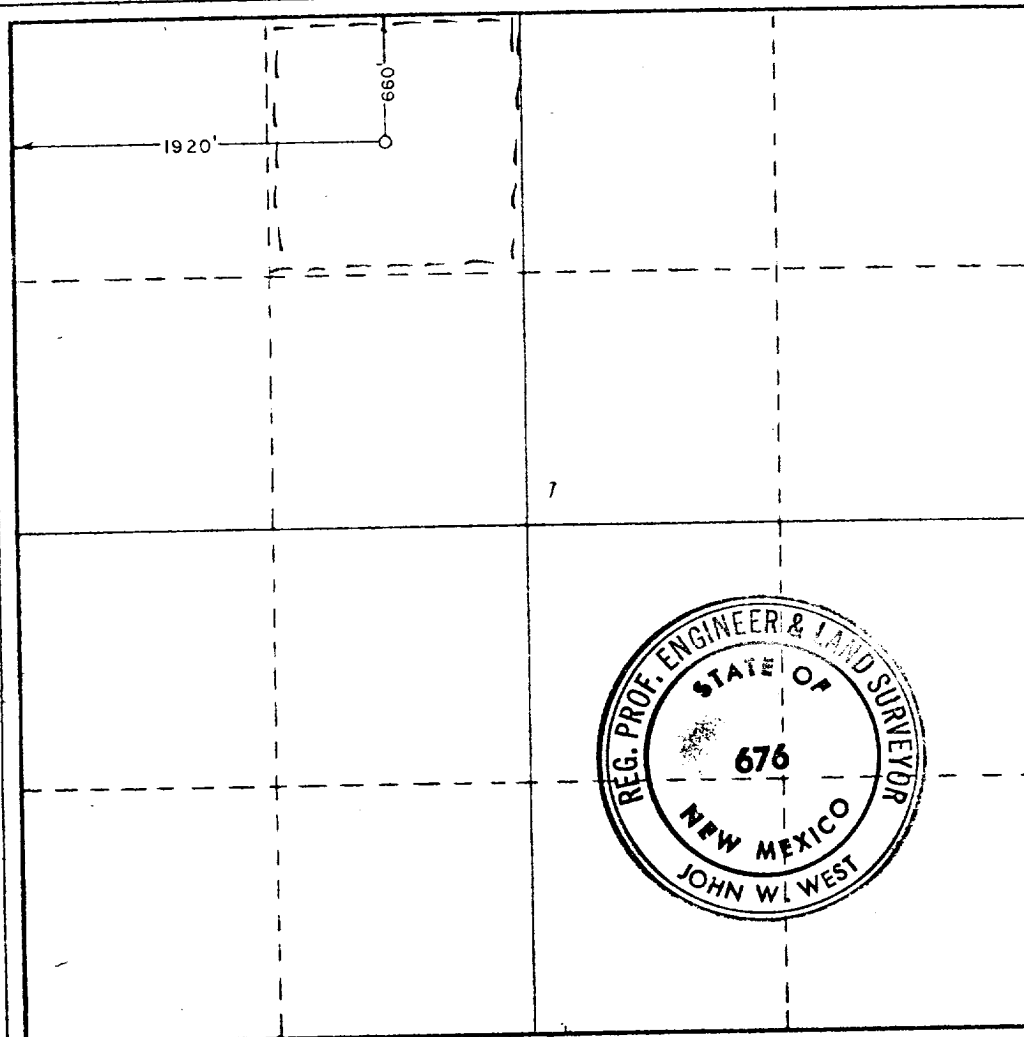
Operator CONOCO INCORPORATED			Lease WARREN UNIT		Well No. 84
Unit Letter C	Section 33	Township 20 SOUTH	Range 38 EAST	County LEA	
Actual Footage Location of Well: 660 feet from the NORTH line and 1920 feet from the WEST line					
Ground Level Elev. 3513.7	Producing Formation <i>Blinberry</i>		Pool <i>Blinberry Oil Lease</i>		Dedicated Acreage: 40 Acres

1. Outline the acreage dedicated to the subject well by colored pencil or hachure marks on the plat below.
2. If more than one lease is dedicated to the well, outline each and identify the ownership thereof (both as to working interest and royalty).
3. If more than one lease of different ownership is dedicated to the well, have the interests of all owners been consolidated by communitization, unitization, force-pooling, etc?

☐ Yes ☐ No If answer is "yes," type of consolidation _____

If answer is "no," list the owners and tract descriptions which have actually been consolidated. (Use reverse side of this form if necessary.) _____

No allowable will be assigned to the well until all interests have been consolidated (by communitization, unitization, forced-pooling, or otherwise) or until a non-standard unit, eliminating such interests, has been approved by the Commission.



CERTIFICATION

I hereby certify that the information contained herein is true and complete to the best of my knowledge and belief.

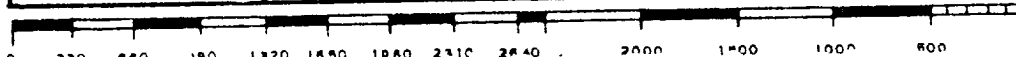
Name
R. E. Bingham
Position
ADMIN. SUPERVISOR
Company
CONOCO INC.
Date
9-22-80

I hereby certify that the well location shown on this plat was plotted from field notes of actual surveys made by me or under my supervision, and that the same is true and correct to the best of my knowledge and belief.

Date Surveyed
AUGUST 23, 1980

Registered Professional Engineer and/or Land Surveyor

John W. West
Certificate No. **JOHN W. WEST 676**
PATRICK A. ROMERO 6865
Ronald J. Elders 3239



RECEIVED

OCT 21 1980

OIL CONSERVATION DIV.

173