

All distances must be from the outer boundaries of the Section.

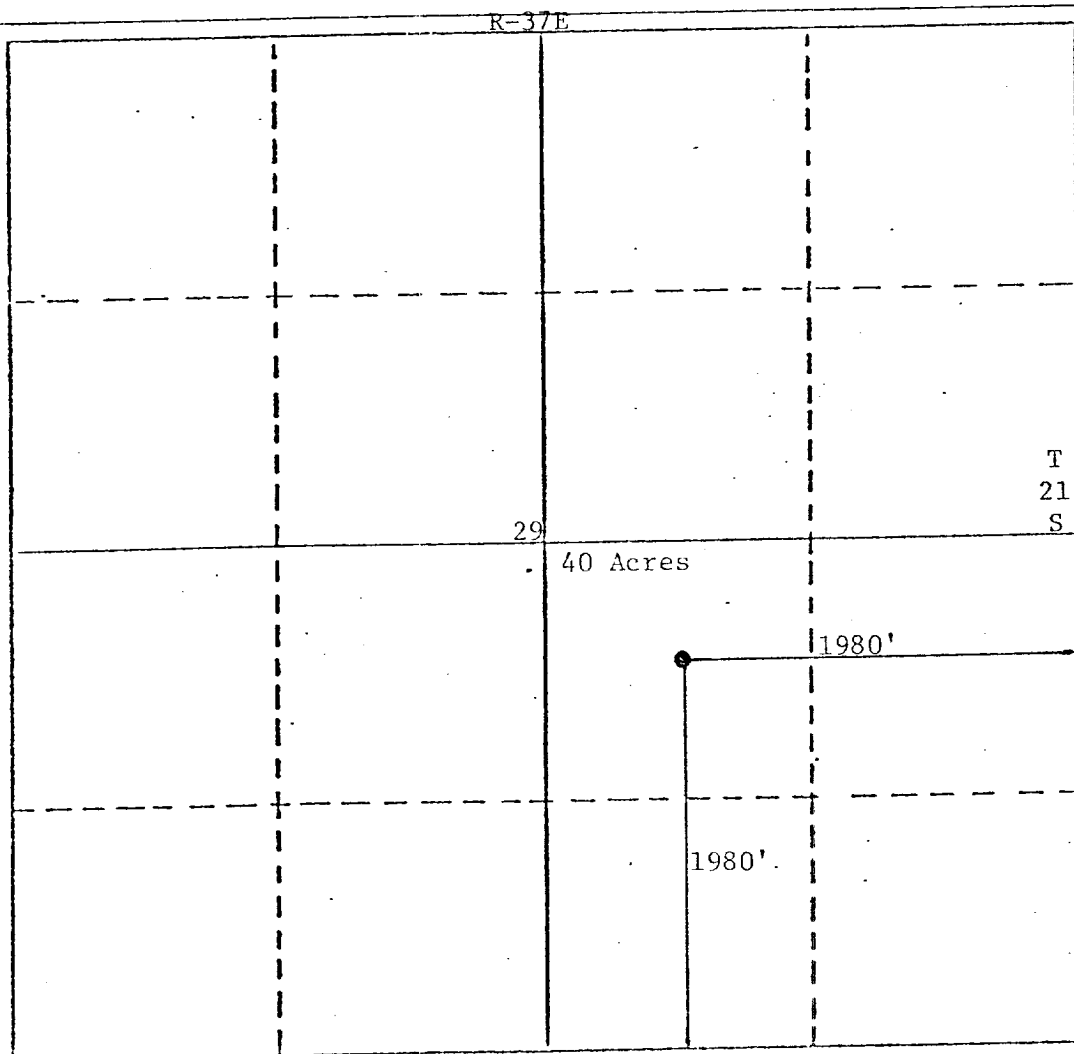
Operator Marathon Oil Company			Lease William Turner			Well No. 4		
Unit Letter J	Section 29	Township 21S	Range 37E	County Lea				
Actual Footage Location of Well:								
1980 feet from the South line and			1980 feet from the East line					
Ground Level Elev. 3474	Producing Formation Wantz-Abo		Pool Wantz Abo			Dedicated Acreage 40 Acres		

- Outline the acreage dedicated to the subject well by colored pencil or hatchure marks on the plat below.
- If more than one lease is dedicated to the well, outline each and identify the ownership thereof (both as to working interest and royalty).
- If more than one lease of different ownership is dedicated to the well, have the interests of all owners been consolidated by communization, unitization, force-pooling, etc?

☐ Yes ☐ No If answer is "yes," type of consolidation \_\_\_\_\_

If answer is "no," list the owners and tract descriptions which have actually been consolidated. (Use reverse side of this form if necessary.) \_\_\_\_\_

No allowable will be assigned to the well until all interests have been consolidated (by communization, unitization, forced-pooling, or otherwise) or until a non-standard unit, eliminating such interests, has been approved by the Division.



#### CERTIFICATION

I hereby certify that the information contained herein is true and complete to the best of my knowledge and belief.

Name Thomas F. Zaparka  
Position Production Engineer  
Company Marathon Oil Company  
Date September 8, 1982

I hereby certify that the well location shown on this plat was plotted from field notes of actual surveys made by me or under my supervision, and that the same is true and correct to the best of my knowledge and belief.

1-30-81

Date Surveyed  
John W. West  
Registered Professional Engineer  
and/or Land Surveyor

676

Certificate No.

0 330 660 990 1320 1650 1980 2310 2640 2970 3300 3630 3960 4290 4620 4950 5280 5610 5940 6270 6600