

District I
PO Box 1988, Hobbs, NM 88241-1988
District II
PO Drawer DD, Artesia, NM 88211-0719
District III
1000 Rio Grande Rd., Aztec, NM 87410
District IV
PO Box 2088, Santa Fe, NM 87504-2088

State of New Mexico
Energy, Minerals & Natural Resources Department

OIL CONSERVATION DIVISION
PO Box 2088
Santa Fe, NM 87504-2088

Form C-102
Revised February 10, 1994
Instructions on back
Submit to Appropriate District Office
State Lease - 4 Copies
Fee Lease - 3 Copies

☐ AMENDED REPORT

WELL LOCATION AND ACREAGE DEDICATION PLAT

* API Number 30 025 27289		* Pool Code 63800		* Pool Name East Weir Blinebry	
* Property Code 3086		* Property Name SEMU Skaggs B			* Well Number 120
* OGRID No. 005073		* Operator Name Conoco, Inc.			* Elevation

10 Surface Location

UL or lot no.	Section	Township	Range	Lot Idn	Feet from the	North/South line	Feet from the	East/West line	County
B	14	20S	37E		660	North	1980	East	Lea

11 Bottom Hole Location If Different From Surface

UL or lot no.	Section	Township	Range	Lot Idn	Feet from the	North/South line	Feet from the	East/West line	County

12 Dedication Acres 40	13 Joint or Infill	14 Consolidation Code	15 Order No. R-11121
---------------------------	--------------------	-----------------------	-------------------------

NO ALLOWABLE WILL BE ASSIGNED TO THIS COMPLETION UNTIL ALL INTERESTS HAVE BEEN CONSOLIDATED
OR A NON-STANDARD UNIT HAS BEEN APPROVED BY THE DIVISION

16				<p>17 OPERATOR CERTIFICATION</p> <p>I hereby certify that the information contained herein is true and complete to the best of my knowledge and belief.</p> <p><i>Ann E. Ritchie</i></p> <p>Signature</p> <p>Ann E. Ritchie</p> <p>Printed Name</p> <p>Regulatory Agent</p> <p>Title</p> <p>4-7-99</p> <p>Date</p>
				<p>18 SURVEYOR CERTIFICATION</p> <p>I hereby certify that the well location shown on this plat was plotted from field notes of actual surveys made by me or under my supervision, and that the same is true and correct to the best of my belief.</p> <p>Date of Survey</p> <p>Signature and Seal of Professional Surveyor</p> <p>Certificate Number</p>

NEW MEXICO OIL CONSERVATION COMMISSION
WELL LOCATION AND ACREAGE DEDICATION PLAT

Form C-102
Supersedes C-128
Effective 1-4-65

All distances must be from the outer boundaries of the Section.

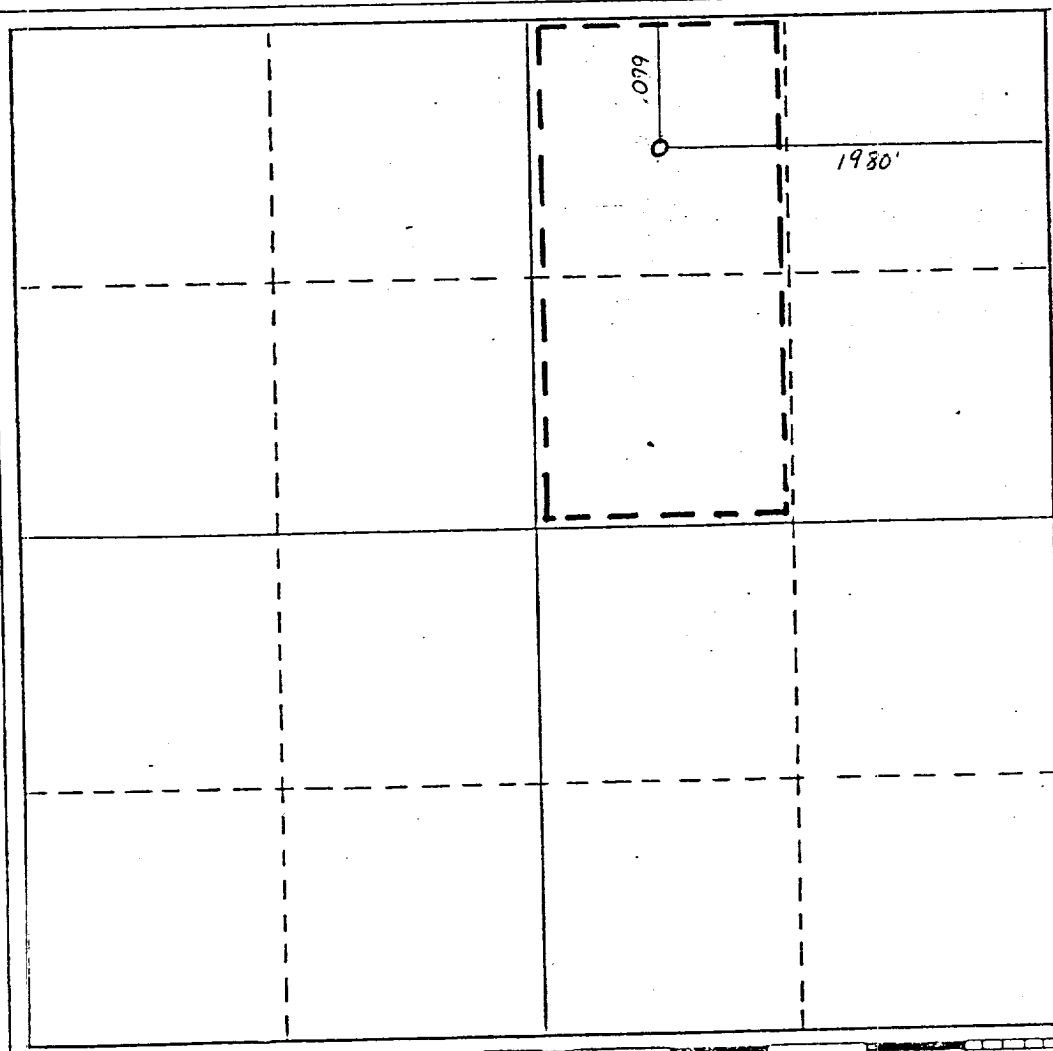
Operator Conoco Inc.		Lease Semy Blanchy / Tubb		Well No. 120
Unit Letter B	Section 14	Township 20 South	Range 37 East	County Lea
Actual Footage Location of Well: 660 feet from the North line and 1980 feet from the East line				
Ground Level Elev. 3561'	Producing Formation Tubb		Pool Monument Tubb	Dedicated Acreage: 80 Acres

- Outline the acreage dedicated to the subject well by colored pencil or hachure marks on the plat below.
- If more than one lease is dedicated to the well, outline each and identify the ownership thereof (both as to working interest and royalty).
- If more than one lease of different ownership is dedicated to the well, have the interests of all owners been consolidated by communitization, unitization, force-pooling, etc?

☐ Yes ☐ No If answer is "yes," type of consolidation _____

If answer is "no," list the owners and tract descriptions which have actually been consolidated. (Use reverse side of this form if necessary.) _____

No allowable will be assigned to the well until all interests have been consolidated (by communitization, unitization, forced-pooling, or otherwise) or until a non-standard unit, eliminating such interests, has been approved by the Commission.



CERTIFICATION

I hereby certify that the information contained herein is true and complete to the best of my knowledge and belief.

Name
Wm. D. Butterfield
Position
Administrative Supervisor
Company
Conoco Inc.

Date
February 1, 1983

Revised Form C-102

I hereby certify that the well location shown on this plat was plotted from field notes of actual surveys made by me or under my supervision, and that the same is true and correct to the best of my knowledge and belief.

Date Surveyed

Registered Professional Engineer and/or Land Surveyor

Certificate No.

RECEIVED
FEB 1 1983
O.C.D.
HOBBS OFFICE

NEW MEXICO OIL CONSERVATION COMMISSION
WELL LOCATION AND ACREAGE DEDICATION PLAT

Form C-102
Supersedes C-125
Effective 1-1-65

All distances must be from the outer boundaries of the Section.

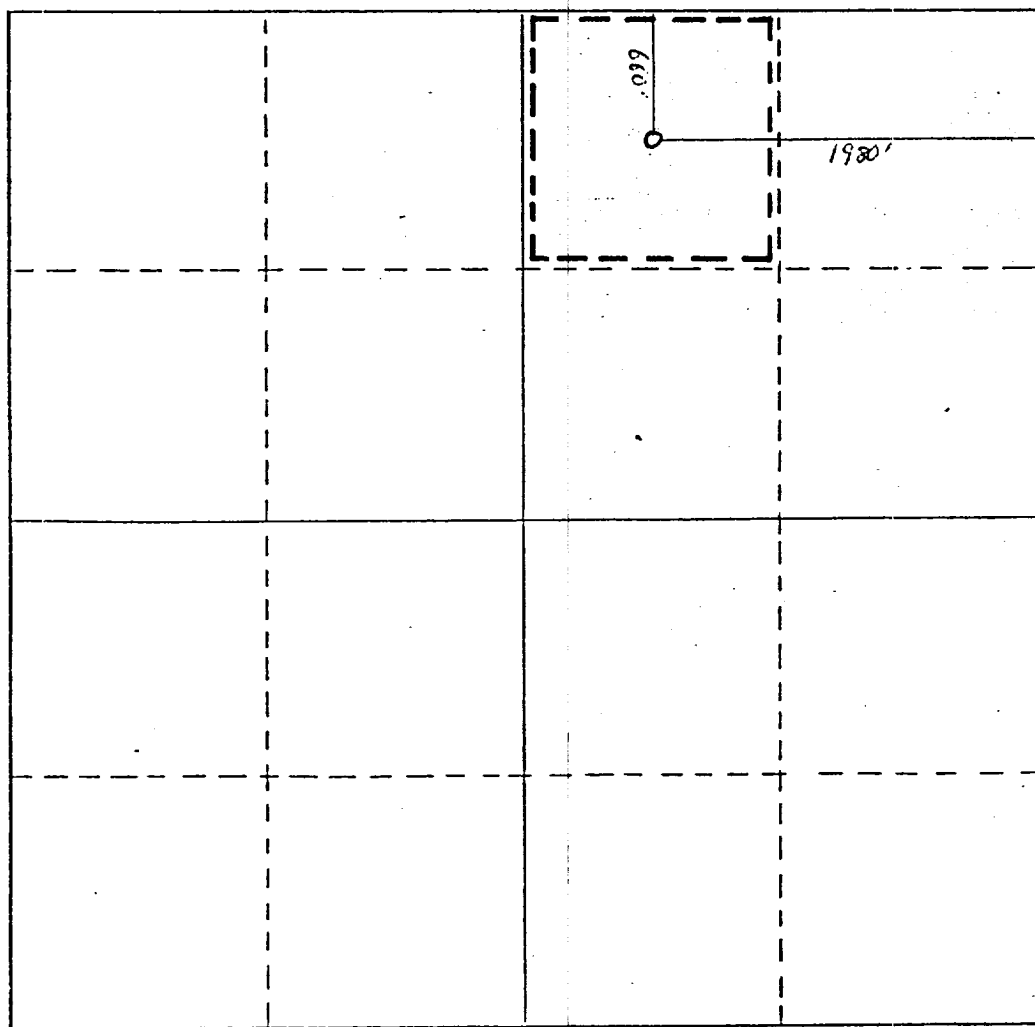
Operator Conoco Inc.		Lease Semu Blinebry		Well No. 120
Unit Letter B	Section 14	Township 20 South	Range 37 East	County Lea
Actual Footage Location of Well: 660 feet from the North line and 1980 feet from the East line				
Ground Level Elev. 3561'	Producing Formation Blinebry	Pool Blinebry Oil & Gas	Dedicated Acreage: 40 Acres	

1. Outline the acreage dedicated to the subject well by colored pencil or hachure marks on the plat below.
2. If more than one lease is dedicated to the well, outline each and identify the ownership thereof (both as to working interest and royalty).
3. If more than one lease of different ownership is dedicated to the well, have the interests of all owners been consolidated by communitization, unitization, force-pooling, etc?

☐ Yes ☐ No If answer is "yes," type of consolidation _____

If answer is "no," list the owners and tract descriptions which have actually been consolidated. (Use reverse side of this form if necessary.) _____

No allowable will be assigned to the well until all interests have been consolidated (by communitization, unitization, forced-pooling, or otherwise) or until a non-standard unit, eliminating such interests, has been approved by the Commission.



CERTIFICATION

I hereby certify that the information contained herein is true and complete to the best of my knowledge and belief.

Name
W. A. Butcherfield
Position
Administrative Supervisor
Company
Conoco Inc.

Date
February 1, 1983

Revised Form C-102

I hereby certify that the well location shown on this plat was plotted from field notes of actual surveys made by me or under my supervision, and that the same is true and correct to the best of my knowledge and belief.

Date Surveyed

Registered Professional Engineer
and/or Land Surveyor

Certificate No.

RECEIVED
FEB 1 1983
O.C.D.
HOBBS OFFICE

COUNTY	LFA	FIELD	Monument	STATE	NM
OPR	CONOCO, INC.			API	30-025-27289
NO	120	LEASE	SEMU Blinebry Tubb	MAP	
	Sec 14, T20S, R37E			CO-ORD	
	660 FNL, 1980 FEL of Sec				7-5-20 NM
	4 mi SE/Monument			RE-SPD	7-1-83RE-CMP 7-10-83
CSC	9 5/8-1390-550 sx 7-6730-1729 sx 2 3/8-6666			WELL CLASS: INIT DX FIN DO LSE. CODE	
	FORMATION		DATUM	FORMATION DATUM	
	TD 6730 (TUBB)		PBD	6694	

(Tubb) Perfs 6424-6658 NO NEW POTENTIAL

CONTR	OPRSELEV	3560 GL	sub-s
-------	----------	---------	-------

F.R.C. 7-30-83 OWWO
 PD 6694 WO
 (Orig. Cmp. 5-25-82 dual thru (Blinebry) Perfs 5710-5811 & (Tubb) Perfs 6424-6658, OTD 6730, OPB 6694)
 7-25-83 TD 6730; PBD 6694; Complete
 Blinebry Perfs (5710-5811) isolated with Pkrs
 May downhole commingle at a later date
 LOG TOPS (Not previously reported): Rustler 1335, Salt 1422, Queen 2468, Yates 2670, Seven Rivers 2920, Grayburg 3760, Penrose 3810, San Andres 4130, Glorieta 5235, Blinebry 5640, Blinebry Marker 5740, Tubb 6348
 LOG RUN: CCL
 7-30-83 COMPLETION ISSUED 7-5-20 NM
 IC 30-025-70494-83