

30-025-27703

NO. OF COPIES RECEIVED

DISTRIBUTION

SANTA FE

FILE

U.S.G.S.

LAND OFFICE

OPERATOR

NEW MEXICO OIL CONSERVATION COMMISSION

Form C-101
Revised 1-1-65

5A. Indicate Type of Lease

STATE ☐FEE ☒

5. State Oil & Gas Lease No.

APPLICATION FOR PERMIT TO DRILL, DEEPEN, OR PLUG BACK

1a. Type of Work

DRILL ☒DEEPEN ☐PLUG BACK ☐

b. Type of Well

OIL WELL ☒GAS WELL ☐

OTHER

SINGLE ZONE ☒MULTIPLE ZONE ☐

2. Name of Operator

Tamarack Petroleum Co., Inc.

3. Address of Operator

P. O. Box 2046, Midland, TX 79702

4. Location of Well

UNIT LETTER

F

LOCATED

1650

FEET FROM THE

north

LINE

AND

1650

FEET FROM THE

west

LINE OF SEC.

9

TWP.

20-S

RGE.

38-E

NMPM

12. County

Lea

21. Elevations (Show whether DF, RT, etc.)

3571 GR

21A. Kind & Status Plug. Bond

Blanket (in force)

19. Proposed Depth

7100'

19A. Formation

Drinkard

20. Rotary or C.T.

Rotary

21B. Drilling Contractor

Tom Brown RIG 20

22. Approx. Date Work will start

JAN. 7, 1982

23.

PROPOSED CASING AND CEMENT PROGRAM

SIZE OF HOLE	SIZE OF CASING	WEIGHT PER FOOT	SETTING DEPTH	SACKS OF CEMENT	EST. TOP
12 1/4"	8 5/8"	24#	1600'	900 sacks	circ. to sur
7 7/8"	4 1/2"	10.5#	7100'	625 sacks	5000

1. Drill 12 1/4" hole to top of salt section.
2. Run 8 5/8" casing and circulate cement, WOC 18 hrs.
3. Test casing and Shaffer 10" Series 900, Type LWS BOPE to 2000#.
4. Drill 7 7/8" hole to bottom to Drinkard Formation.
5. Log well.
6. Run 4 1/2" casing to 7100' and cement with sufficient cement to cover the Glorietta.
7. Test casing to 2000#.
8. Perforate and complete as indicated by logs.

APPROVAL VALID FOR 180 DAYS
 PERMIT EXPIRES 7/7/82
 UNLESS DRILLING UNDERWAY

IN ABOVE SPACE DESCRIBE PROPOSED PROGRAM: IF PROPOSAL IS TO DEEPEN OR PLUG BACK, GIVE DATA ON PRESENT PRODUCTIVE ZONE AND PROPOSED NEW PRODUCTIVE ZONE. GIVE BLOWOUT PREVENTER PROGRAM, IF ANY.

I hereby certify that the information above is true and complete to the best of my knowledge and belief.

Signed Randy A. M. Clay Title District Engineer Date December 24, 1981

(This space for State Use)

Orig. Signed by

Jerry Sexton

APPROVED BY Dist. Eng. TITLE DATE

CONDITIONS OF APPROVAL, IF ANY:

**MEXICO OIL CONSERVATION COMMISSION
WELL LOCATION AND ACREAGE DEDICATION PLAT**

Form C-102
Supersedes C-128
Effective 1-1-65

All distances must be from the outer boundaries of the Section

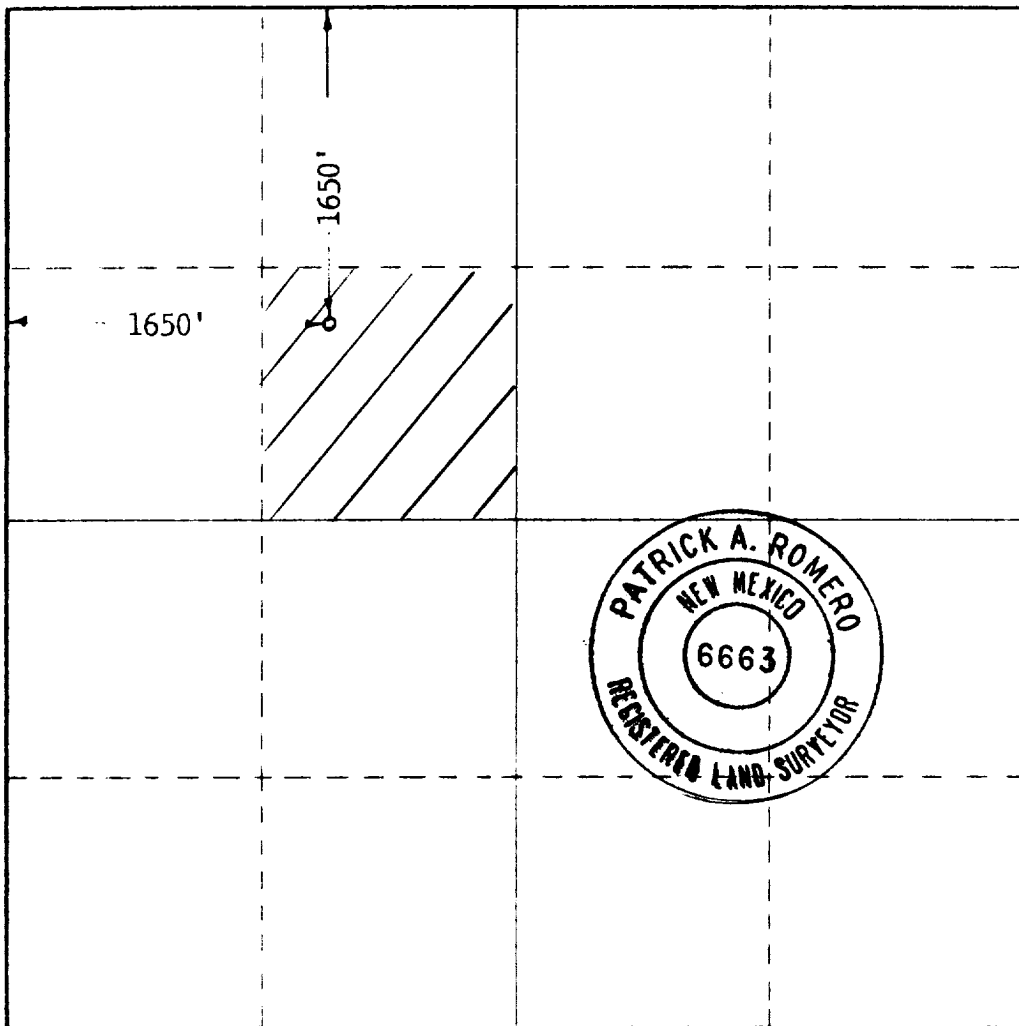
Operator TAMARACK PETROLEUM CO			Lease Kornegay "A"		Well No. 1
Tract Letter F	Section 9	Township 20 south	Range 38 east	County Lea	
Actual Footage Location of Well: <div style="display: flex; justify-content: space-between;"> 1650 feet from the North line and 1650 feet from the West line </div>					
Ground Level Elev. 3571.1	Producing Formation Drinkard	Pool W. Nadine		Dedicated Acreage: 40 Acres	

1. Outline the acreage dedicated to the subject well by colored pencil or hachure marks on the plat below.
2. If more than one lease is dedicated to the well, outline each and identify the ownership thereof (both as to working interest and royalty).
3. If more than one lease of different ownership is dedicated to the well, have the interests of all owners been consolidated by communitization, unitization, force-pooling, etc?

☐ Yes ☐ No If answer is "yes," type of consolidation _____

If answer is "no," list the owners and tract descriptions which have actually been consolidated. (Use reverse side of this form if necessary.) _____

No allowable will be assigned to the well until all interests have been consolidated (by communitization, unitization, forced-pooling, or otherwise) or until a non-standard unit, eliminating such interests, has been approved by the Commission.



CERTIFICATION

I hereby certify that the information contained herein is true and complete to the best of my knowledge and belief.

Randy A. McClay
Name

Randy A. McClay

Position
District Engineer

Company
Tamarack Petroleum Co., Inc.

Date
January 5, 1982

I hereby certify that the well location shown on this plat was plotted from field notes of actual surveys made by me or under my supervision, and that the same is true and correct to the best of my knowledge and belief.

Date Surveyed
December 17, 1981

Registered Professional Engineer and/or Land Surveyor

Patrick A. Romero

Certificate No. **JOHN W. WEST 676**
PATRICK A. ROMERO 6663
Ronald J. Eidson 3239



4-11

RECEIVED

JUN 6 1982

THE PRESERVATION DIV.