

**NEW MEXICO OIL CONSERVATION COMMISSION
WELL LOCATION AND ACREAGE DEDICATION PLAT**

Form C-102
Supersedes C-128
Effective 1-1-85

All distances must be from the outer boundaries of the Section

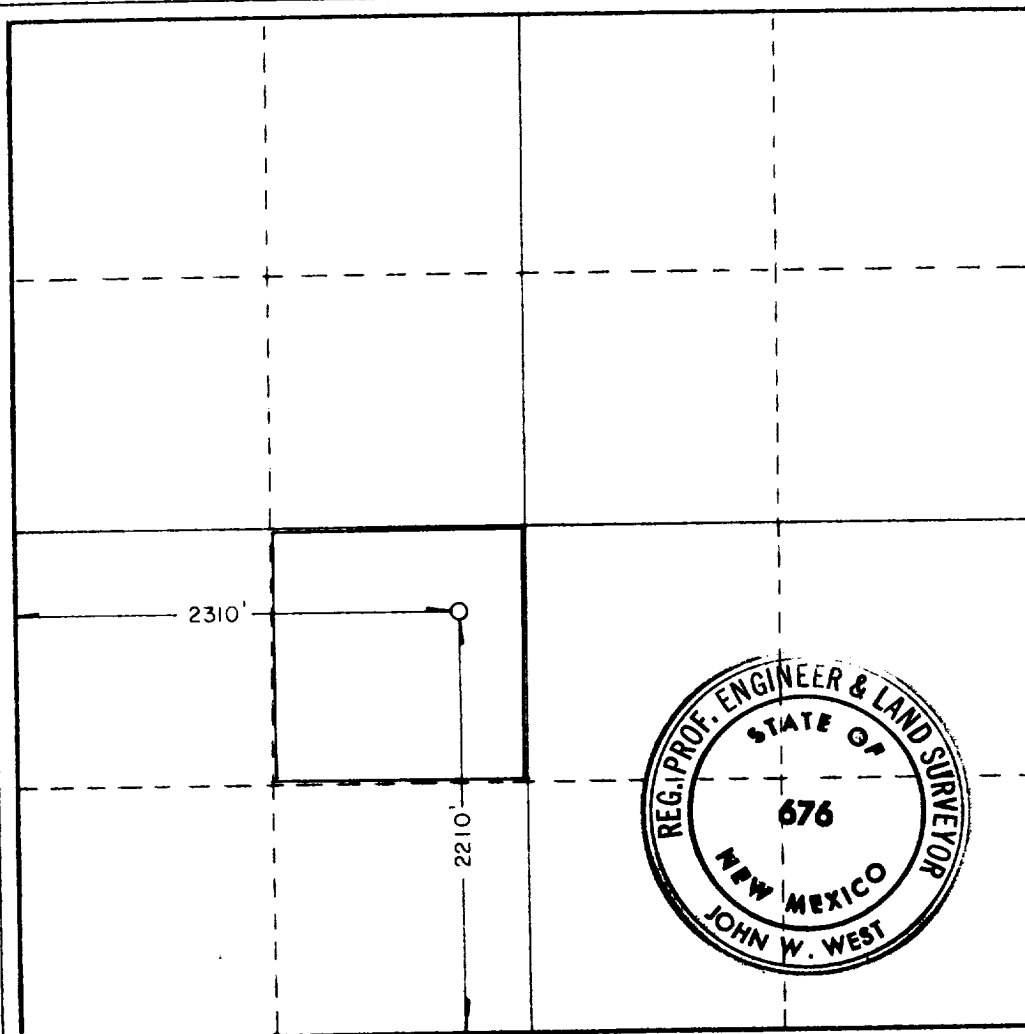
Operator Morris R. Antweil			Lease Herman			Well No. 2		
Unit Letter K	Section 8	Township 20 South	Range 38 East	County Lea				
Actual Footage Location of Well: 2210 feet from the south line and 2310 feet from the west line								
Ground Level Elev. 3562.9'	Producing Formation DRINKARD		Pool WEST NADINE DRINKARD			Dedicated Acreage: 40 Acres		

1. Outline the acreage dedicated to the subject well by colored pencil or hatchure marks on the plat below.
2. If more than one lease is dedicated to the well, outline each and identify the ownership thereof (both as to working interest and royalty).
3. If more than one lease of different ownership is dedicated to the well, have the interests of all owners been consolidated by communitization, unitization, force-pooling, etc?

☒ Yes ☐ No If answer is "yes," type of consolidation Pooled

If answer is "no," list the owners and tract descriptions which have actually been consolidated. (Use reverse side of this form if necessary.) _____

No allowable will be assigned to the well until all interests have been consolidated (by communitization, unitization, forced-pooling, or otherwise) or until a non-standard unit, eliminating such interests, has been approved by the Commission.



CERTIFICATION

I hereby certify that the information contained herein is true and complete to the best of my knowledge and belief.

Jerry Hillard
Name

JERRY HILLARD

Position
AGENT

Company
MORRIS R. ANTWEIL

Date
January 26, 1982

I hereby certify that the well location shown on this plat was plotted from field notes of actual surveys made by me or under my supervision, and that the same is true and correct to the best of my knowledge and belief.

Date Surveyed
1-25-82

Registered Professional Engineer and/or Land Surveyor

John W. West

Certificate No. **JOHN W. WEST 676**
PATRICK A. ROMERO 6863
Ronald J. Eidsen 3239

RECEIVED

JAN 27 1982

U.S. DEPARTMENT OF JUSTICE

413