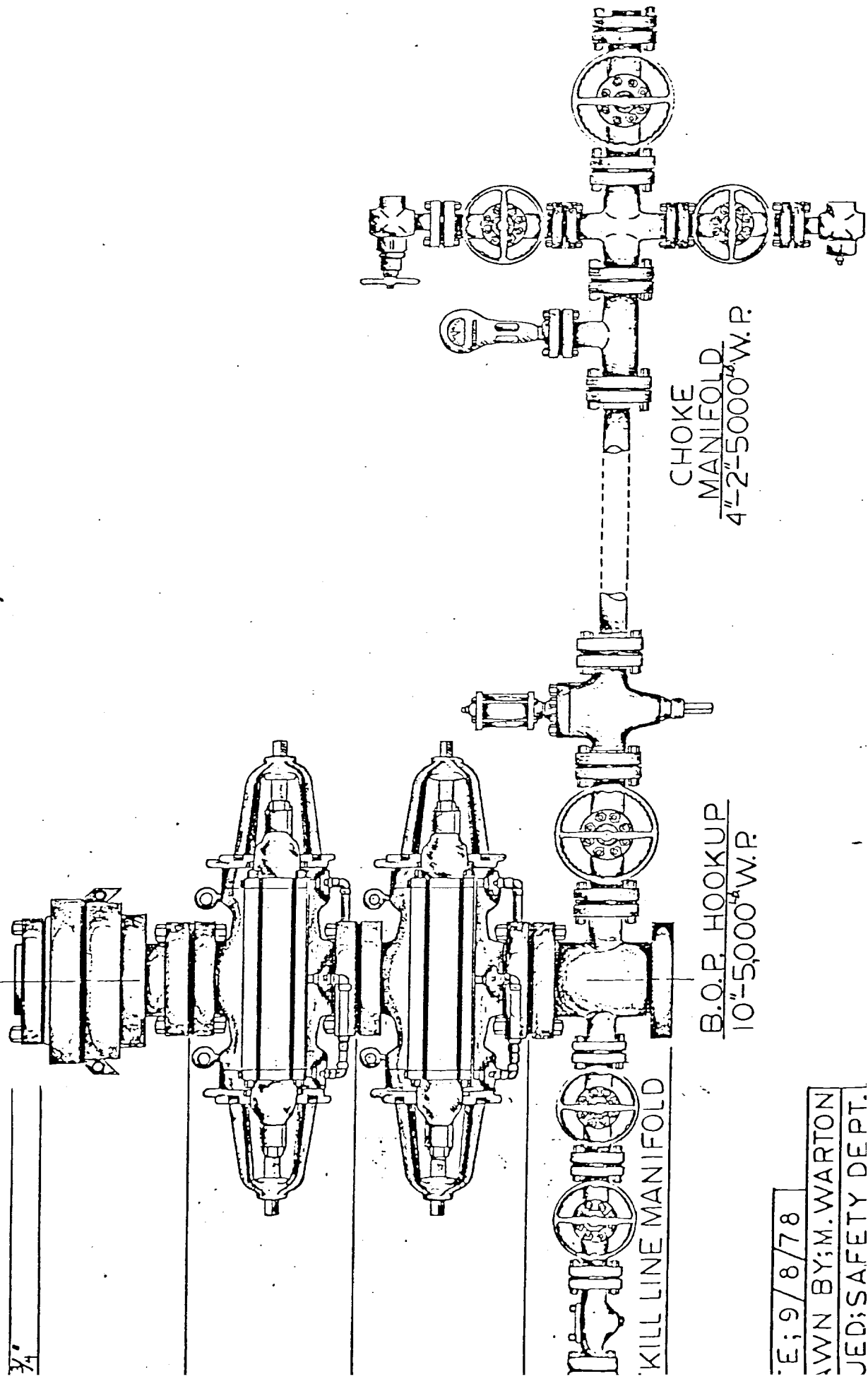


# WARTON DRILLING CO.

B.O.P. ARRANGEMENT RIG NO. 6

- 1-G.K. HYDRILL 12"-900 SERIES; 3000 LBS. W.P.
- 1 QRC CAMERON 10"-1500 SERIES; 5000 LBS. W.P.; DOUBLE B.O.P.
- CHOK MANIFOLD 4½"-15000 SERIES; 5000 LBS. W.P.; W/CAMERON HYDR. VALVE
- 1-POSITIVE; 1-ADJUSTABLE CHOK
- 1-KOOMEY ACCUMULATOR; 7 STATION W/REMOTE CONTROL STAND; 3000 LBS. P.S.I.
- 1-12"-900 SERIES; 3000 LBS. P.S.I.; DOUBLE SHAFFER B.O.P.; TO BE USED FOR DRILLING INTERMEDIATE HOLE.



E; 9/8/78

OWN BY: M. WARTON  
 JED; SAFETY DEPT.

**NEW MEXICO OIL CONSERVATION COMMISSION  
WELL LOCATION AND ACREAGE DEDICATION PLAT**

Form C-102  
Supersedes C-128  
Effective 1-1-65

All distances must be from the outer boundaries of the Section

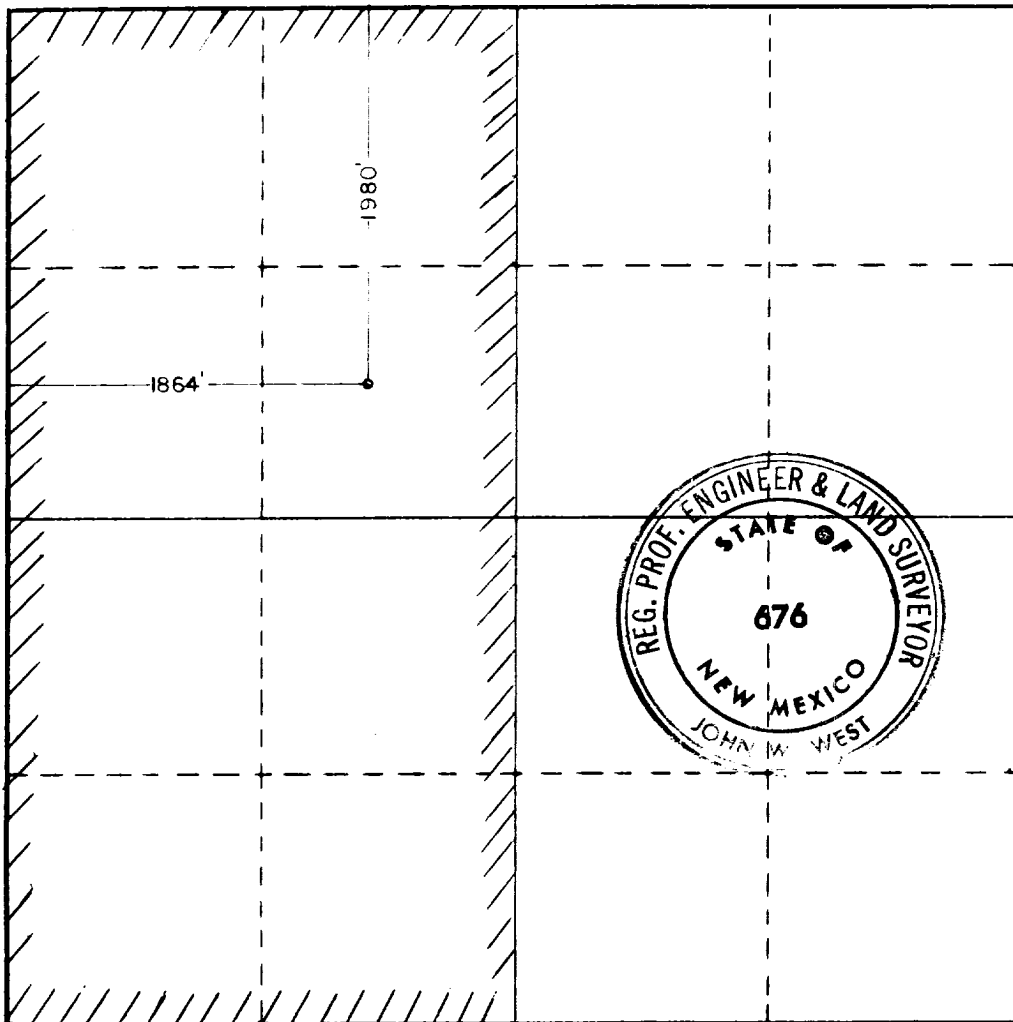
Operator <b>Pogo Producing Company</b>			Lease <b>NBR</b>		Well No. <b>2</b>
Unit Letter <b>F</b>	Section <b>18</b>	Township <b>22 South</b>	Range <b>33 East</b>	County <b>Lea</b>	
Actual Footage Location of Well: <b>1980</b> feet from the <b>north</b> line and <b>1864</b> feet from the <b>west</b> line					
Ground Level Elev. <b>3630.8'</b>	Producing Formation <b>MORROW</b>		Pool <b>BOOTLEG RIDGE MORROW</b>		Dedicated Acreage: <b>320 306.20</b> Acres

1. Outline the acreage dedicated to the subject well by colored pencil or hatchure marks on the plat below.
2. If more than one lease is dedicated to the well, outline each and identify the ownership thereof (both as to working interest and royalty).
3. If more than one lease of different ownership is dedicated to the well, have the interests of all owners been consolidated by communitization, unitization, force-pooling, etc?

☐ Yes    ☐ No    If answer is "yes," type of consolidation \_\_\_\_\_

If answer is "no," list the owners and tract descriptions which have actually been consolidated. (Use reverse side of this form if necessary.) \_\_\_\_\_

No allowable will be assigned to the well until all interests have been consolidated (by communitization, unitization, forced-pooling, or otherwise) or until a non-standard unit, eliminating such interests, has been approved by the Commission.



**CERTIFICATION**

I hereby certify that the information contained herein is true and complete to the best of my knowledge and belief.

Name  
*John W. West*  
Position  
**Division Operations Manager**  
Company  
**Pogo Producing Company**  
Date  
**March 19, 1982**

I hereby certify that the well location shown on this plat was plotted from field notes of actual surveys made by me or under my supervision, and that the same is true and correct to the best of my knowledge and belief.

Date Surveyed  
**3-16-82**  
Registered Professional Engineer  
and/or Land Surveyor

*John W. West*  
Certificate No. **JOHN W. WEST 676**  
**PATRICK A. ROMERO 6863**  
**Ronald J. Eidson 3239**

0 320 640 960 1280 1600 1920 2240 2560 2880 3200 3520 3840 4160 4480 4800 5120 5440 5760 6080 6400

RECEIVED

MAR 22 1982

RODOLPH CANCE

473