

NEW MEXICO OIL CONSERVATION COMMISSION
WELL LOCATION AND ACREAGE DEDICATION PLAT

Form C-102
Supersedes C-128
Effective 1-1-65

All distances must be from the outer boundaries of the Section

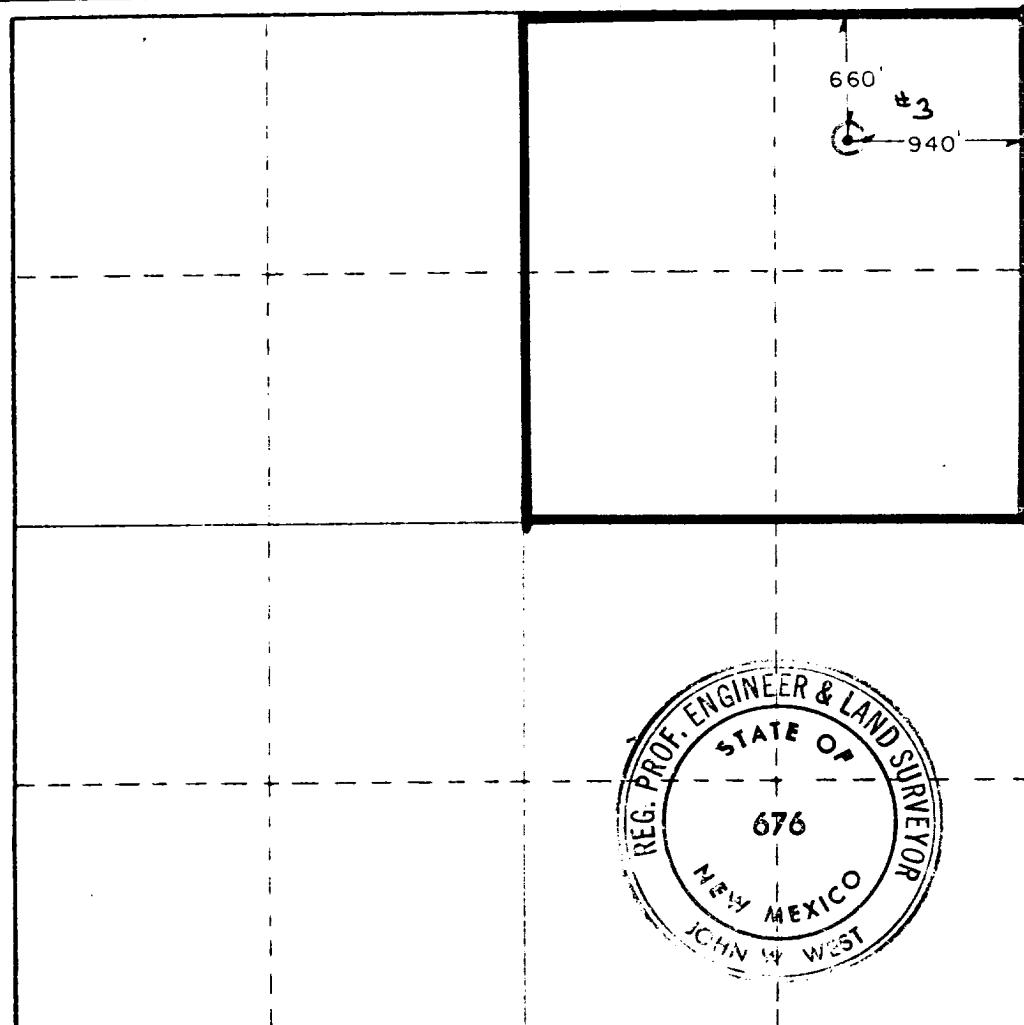
| | | | | | |
|--|--|-----------------------------|--|----------------------|--|
| Operator Sun Exploration & Production Co. | | | Lease BOREN AND CREEK GAS COM. | | Well No. 3 |
| Tract Letter A | Section 20 | Township 22 South | Range 36 East | County Lea | |
| Actual Footage Location of Well: 660 feet from the North line and 940 feet from the East line | | | | | |
| Ground Level Elev. 3543.5 | Producing Formation Seven Rivers | | Pool Jalmat Gas Pool | | Dedicated Acreage: 160 Acres |

1. Outline the acreage dedicated to the subject well by colored pencil or hatchure marks on the plat below.
2. If more than one lease is dedicated to the well, outline each and identify the ownership thereof (both as to working interest and royalty).
3. If more than one lease of different ownership is dedicated to the well, have the interests of all owners been consolidated by communitization, unitization, force-pooling, etc?

☐ Yes ☐ No If answer is "yes," type of consolidation _____

If answer is "no," list the owners and tract descriptions which have actually been consolidated. (Use reverse side of this form if necessary.) _____

No allowable will be assigned to the well until all interests have been consolidated (by communitization, unitization, forced-pooling, or otherwise) or until a non-standard unit, eliminating such interests, has been approved by the Commission.



CERTIFICATION

I hereby certify that the information contained herein is true and complete to the best of my knowledge and belief.

DeeAnn Kemp

Name

DeeAnn Kemp

Position

Accounting Assistant II

Company

Sun Exploration & Production Co

Date

May 5, 1982

I hereby certify that the well location shown on this plat was plotted from field notes of actual surveys made by me or under my supervision, and that the same is true and correct to the best of my knowledge and belief.

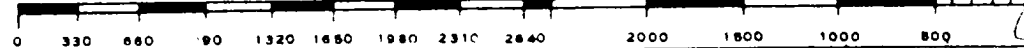
Date Surveyed

4/16/82

Registered Professional Engineer and/or Land Surveyor

John W. West

Certificate No. **JOHN W. WEST 676**
PATRICK A. ROMERO 6883
Ronald J. Eidson 3239



RECEIVED

MAY 7 1982

CHIEF
HOBBS OFFICE

