

DISTRICT I
P.O. Box 1980, Hobbs, NM 88241-1980

DISTRICT II
P.O. Box Drawer DD, Artesia, NM 88211-0719

DISTRICT III
1000 Rio Brazos Rd., Aztec, NM 87410

DISTRICT IV
P.O. Box 2088, Santa Fe, NM 87504-2088

State of New Mexico
Energy, Minerals and Natural Resources Department

OIL CONSERVATION DIVISION

P.O. Box 2088
Santa Fe, New Mexico 87504-2088

Form C-101

Revised February 10, 1994

Instructions on back
Submit to Appropriate District Office
State Lease - 6 Copies
Fee Lease - 5 Copies

☐ AMENDED REPORT

APPLICATION FOR PERMIT TO DRILL, RE-ENTER, DEEPEN, PLUGBACK, OR ADD A ZONE

¹ Operator Name and Address TEXACO EXPLORATION & PRODUCTION INC. P.O. BOX 730, HOBBS, NM 88240		² OGRID Number 022351
⁴ Property Code 11131	⁵ Property Name C H WEIR A	³ API Number 30 025 27829
		⁶ Well No. 14

⁷ Surface Location									
UI or lot no.	Section	Township	Range	Lot.Idn	Feet From The	North/South Line	Feet From The	East/West Line	County
K	12	20S	37E		1980	SOUTH	1815	WEST	LEA

⁸ Proposed Bottom Hole Location If Different From Surface									
UI or lot no.	Section	Township	Range	Lot.Idn	Feet From The	North/South Line	Feet From The	East/West Line	County
⁹ Proposed Pool 1 SKAGGS ABO					¹⁰ Proposed Pool 2 MONUMENT TUBB				


¹¹ Work Type Code A	¹² WellType Code M	¹³ Rotary or C.T. ---	¹⁴ Lease Type Code P	¹⁵ Ground Level Elevation 3575' KB
¹⁶ Multiple YES	¹⁷ Proposed Depth 7620'	¹⁸ Formation ABO/TUBB	¹⁹ Contractor ---	²⁰ Spud Date 4/16/94

²¹ Proposed Casing and Cement Program					
SIZE OF HOLE	SIZE OF CASING	WEIGHT PER FOOT	SETTING DEPTH	SACKS OF CEMENT	EST. TOP
17 1/2"	13 3/8"	61#	1450	1300	CEMENT CIRC.
12 1/4"	9 5/8"	47#	4000	1725	CEMENT CIRC.
8 1/2"	7"	23#, 26#	7620	1085	CEMENT CIRC.

²² Describe the proposed program. If this application is to DEEPEN or PLUG BACK give the data on the present productive zone and proposed new productive zone. Describe the blowout prevention program, if any. Use additional sheets if necessary.

1. MIRU. KILL WELL WITH 2% KCL WATER. TOH W/ PROD. EQUIP. SET RBP AT 6700. PERF @ 6360' - 6451' @ 2 SPF.
2. SET PACKER @ 6320. ACIDIZE TUBB PERFS WITH 3500 GALS., 15% NEFE. P=2600, 10 BPM'S.
3. FRAC TUBB PERFS W/ 61000 GALS 35# XL GEL + 228000# 16/30 OTTAWA SAND. PUMP @ 35 BPM'S, P MAX = 9200 PSI.
4. TOH W/ TREATING PACKER, CLEAN OUT TO RBP. EVALUATE TUBB PRODUCTION.
5. TOH W/ RBP. TIH W/ DUAL PACKER ON ABO STRING., STAB INTO MODEL D PACKER @ 6935', SET DUAL PACKER @ 6300'. STAB INTO DUAL PACKER W/ TUBB STRING. SWAB BOTH STRINGS UNTIL FLOWING & RETURN WELL TO PRODUCTION.

²³ I hereby certify that the rules and regulations of the Oil Conservation Division have been complied with and that the information given above is true and complete to the best of my knowledge and belief.

Signature 

Printed Name Monte C. Duncan

Title Engr Asst

Date 3/16/94

Telephone 397-0418

OIL CONSERVATION DIVISION

Approved By:

Orig. Signed by
Paul Kertz
Geologist

Title:

Approval Date:

MAR 21 1994

Expiration Date:

Conditions of Approval:

Attached ☐

DISTRICT I

P.O. Box 1980, Hobbs, NM 88241-1980

DISTRICT II

P.O. Box Drawer DD, Artesia, NM 88211-0719

DISTRICT III

1000 Rio Brazos Rd., Aztec, NM 87410

DISTRICT IV

P.O. Box 2088, Santa Fe, NM 87504-2088

State of New Mexico

Energy, Minerals and Natural Resources Department

OIL CONSERVATION DIVISION

P.O. Box 2088

Santa Fe, New Mexico 87504-2088

Form C-102

Revised February 10, 1994

Instructions on back

Submit to Appropriate District Office

State Lease - 4 Copies

Fee Lease - 3 Copies

☐ AMENDED REPORT**WELL LOCATION AND ACREAGE DEDICATION PLAT**

¹ API Number 30-025-27829	² Pool Code 85410	³ Pool Name Monument Tubb
⁴ Property Code 11131	⁵ Property Name C H WEIR A	⁶ Well No. 14
⁷ OGRID Number 022351	⁸ Operator Name TEXACO EXPLORATION & PRODUCTION INC.	⁹ Elevation 3575' KB

¹⁰ Surface Location

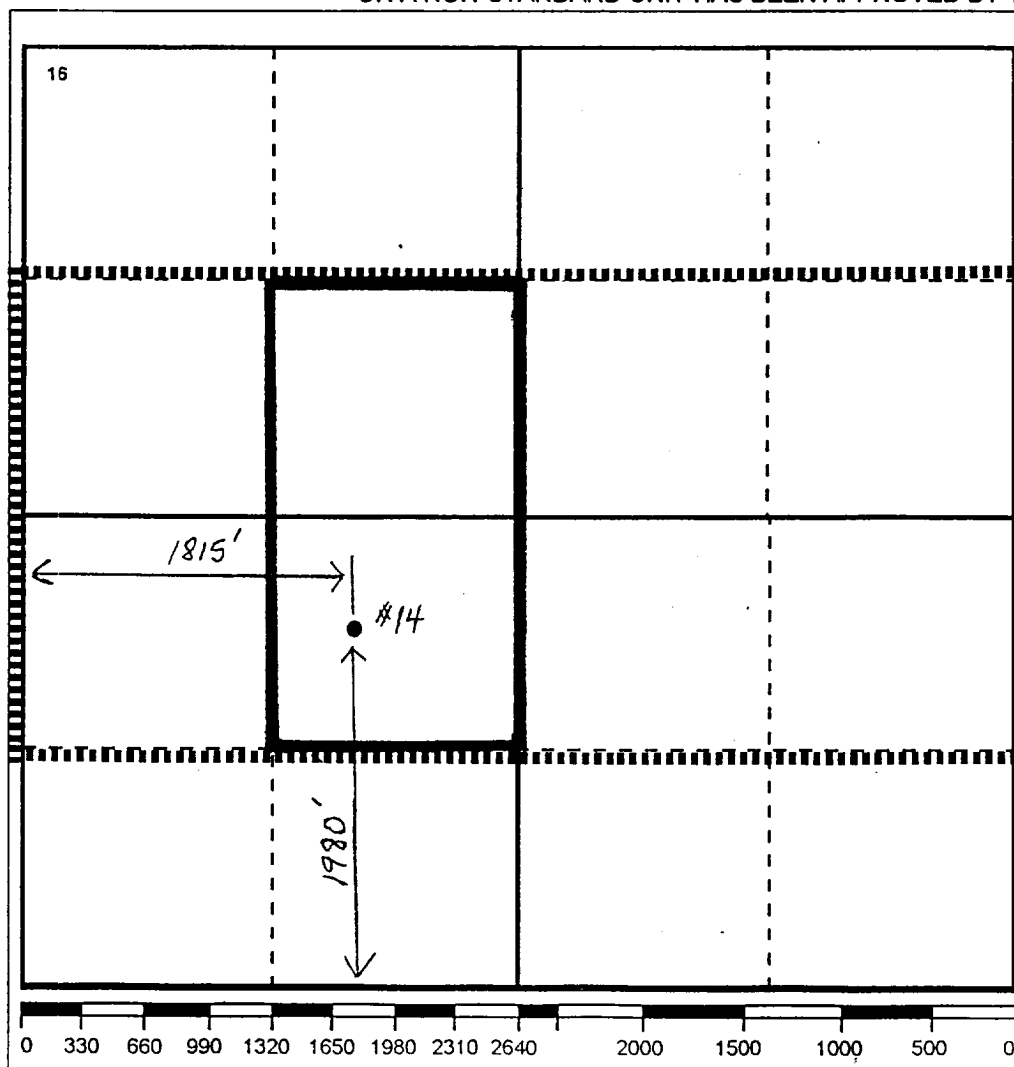
UI or lot no.	Section	Township	Range	Lot.Idn	Feet From The	North/South Line	Feet From The	East/West Line	County
K	12	20S	37E		1980	SOUTH	1815	WEST	LEA

¹¹ Bottom Hole Location If Different From Surface

UI or lot no.	Section	Township	Range	Lot.Idn	Feet From The	North/South Line	Feet From The	East/West Line	County
---------------	---------	----------	-------	---------	---------------	------------------	---------------	----------------	--------

¹² Dedicated Acres 80	¹³ Joint or Infill YES	¹⁴ Consolidation Code	¹⁵ Order No.
-------------------------------------	--------------------------------------	----------------------------------	-------------------------

NO ALLOWABLE WILL BE ASSIGNED TO THIS COMPLETION UNTIL ALL INTERESTS HAVE BEEN CONSOLIDATED
OR A NON-STANDARD UNIT HAS BEEN APPROVED BY THE DIVISION

¹⁷ OPERATOR CERTIFICATION

I hereby certify that the information contained herein is true and complete to the best of my knowledge and belief

Signature

Printed Name

Darrell J. Carriger

Position

Engineering Assistant

Date

3/16/94

¹⁸ SURVEYOR CERTIFICATION

I hereby certify that the well location shown on this plat was plotted from field notes of actual surveys made by me or under my supervision, and that the same is true and correct to the best of my knowledge and belief.

Date Surveyed

Signature & Seal of
Professional Surveyor

Certificate No.