

## OIL CONSERVATION DIVISION

STATE OF NEW MEXICO  
ENERGY AND MINERALS DEPARTMENTP. O. BOX 2088  
SANTA FE, NEW MEXICO 87501Form C-102  
Revised 10-1-78

All distances must be from the outer boundaries of the Section.

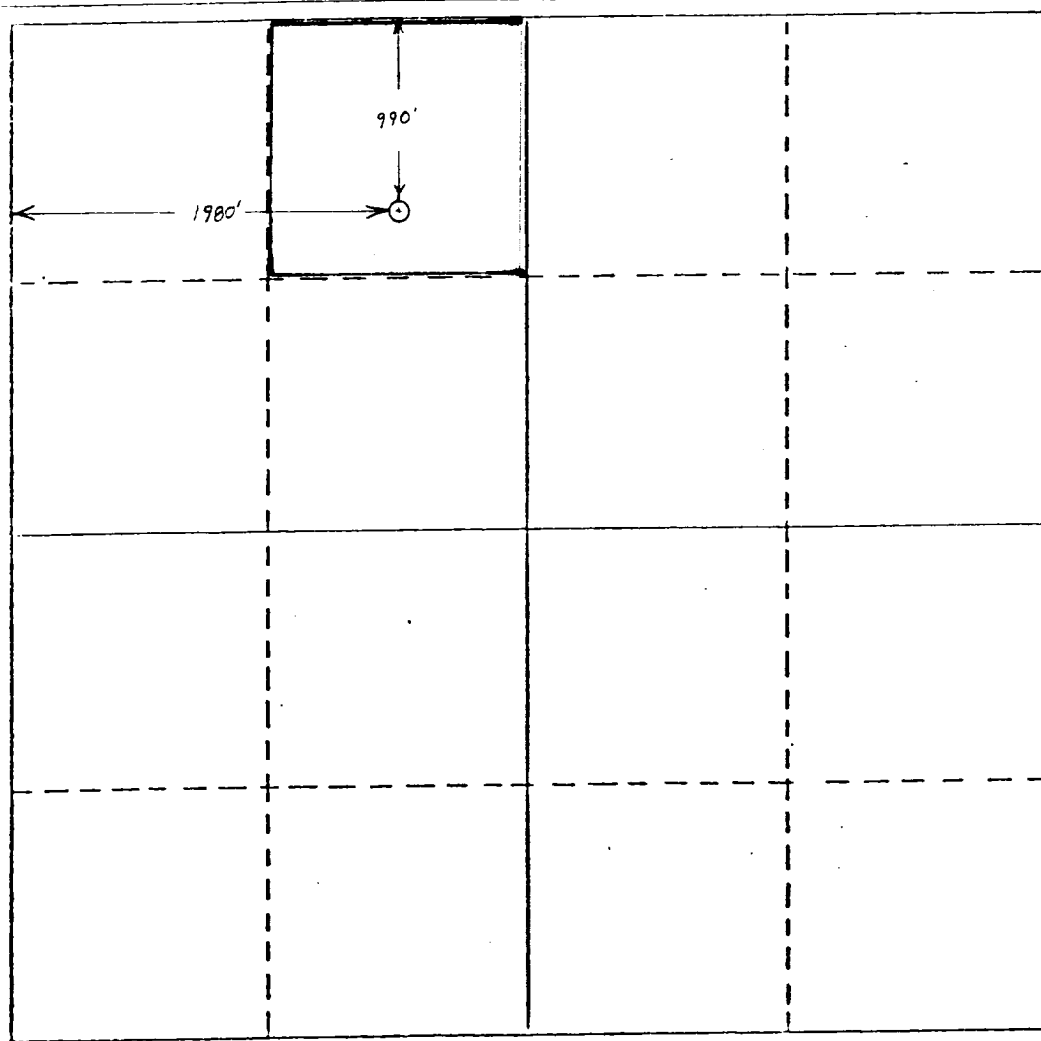
Operator <b>MORRIS R. ANTWEIL</b>			Lease <b>DAISY</b>		Well No. <b>1</b>
Unit Letter <b>C</b>	Section <b>5</b>	Township <b>20 South</b>	Range <b>38 East</b>	County <b>Lea</b>	
Actual Footage Location of Well: <b>990</b> feet from the <b>North</b> line and <b>1980</b> feet from the <b>West</b> line					
Ground Level Elev. <b>3588.8</b>	Producing Formation <b>Blinbry</b>		Pool <b>West Nadine</b>		Dedicated Acreage: <b>40.08</b> Acres

1. Outline the acreage dedicated to the subject well by colored pencil or hatchure marks on the plat below.
2. If more than one lease is dedicated to the well, outline each and identify the ownership thereof (both as to working interest and royalty).
3. If more than one lease of different ownership is dedicated to the well, have the interests of all owners been consolidated by communitization, unitization, force-pooling, etc?

☒ Yes ☐ No If answer is "yes," type of consolidation Pooled

If answer is "no," list the owners and tract descriptions which have actually been consolidated. (Use reverse side of this form if necessary.)

No allowable will be assigned to the well until all interests have been consolidated (by communitization, unitization, forced-pooling, or otherwise) or until a non-standard unit, eliminating such interests, has been approved by the Division.



## CERTIFICATION

I hereby certify that the information contained herein is true and complete to the best of my knowledge and belief.

Name

Jerry Hillard

Position

Agent

Company

Morris R. Antweil

Date

25 Oct 82

I hereby certify that the well location shown on this plat was plotted from field notes of actual surveys made by me or under my supervision, and that the same is true and correct to the best of my knowledge and belief.

Date Surveyed

Registered Professional Engineer  
and/or Land Surveyor

Certificate No.

RECEIVED

OCT 26 1982

U.S. DEPT. OF JUSTICE  
FEDERAL BUREAU OF INVESTIGATION