

NO. OF COPIES RECEIVED	
DISTRIBUTION	
SANTA FE	
FILE	
U.S.G.S.	
LAND OFFICE	
OPERATOR	

5A. Indicate Type of Lease
STATE ☐ REC ☒
5. State Oil & Gas Lease No.

APPLICATION FOR PERMIT TO DRILL, DEEPEN, OR PLUG BACK

1a. Type of Work b. Type of Well OIL WELL <input checked="" type="checkbox"/> GAS WELL <input checked="" type="checkbox"/> OTHER <input type="checkbox"/> DEEPEN <input type="checkbox"/> PLUG BACK <input type="checkbox"/>		7. Unit Agreement Name
2. Name of Operator Texaco Inc.		8. Farm or Lease Name M. B. Weir "B"
3. Address of Operator P. O. Box 3109 Midland, Texas 79702		9. Well No. 11
4. Location of Well UNIT LETTER N LOCATED 660 FEET FROM THE South LINE AND 2079 FEET FROM THE West LINE OF SEC. 12 TWP. 20-S RGE. 37-E NMPM		10. Field and Pool, or Wildcat Skaggs Drinkard, Skaggs Abo & Wildcat
		12. County Lea
19. Proposed Depth 9450'		19A. Formation Drinkard, Abo & Wildcat Ellen
20. Rotary or C.T. Rotary		
21. Elevations (show whether DF, KI, etc.) 3568' GR	21A. Kind & Status Plug. Bond -	21B. Drilling Contractor -
		22. Approx. Date Work will start September 1, 1984

PROPOSED CASING AND CEMENT PROGRAM

SIZE OF HOLE	SIZE OF CASING	WEIGHT PER FOOT	SETTING DEPTH	SACKS OF CEMENT	EST. TOP
26"	20"	94#, H-40	40'	Ready Mix	Circulate
17 1/2"	13 3/8"	54.5#, K-55	1420'	1500	Circulate
12 1/4"	9 5/8"	36#, K-55	4000'	2100	Circulate
		40#, S-80			
8 3/4"	7"	26#, K-55	9450'	1800	Circulate
		23#, K-55			
		26#, N-80			

CEMENT PROGRAM

- CONDUCTOR CASING: Cement with Ready Mix.
- SURFACE CASING: 1300 sxs Class "H" w/4% gel, 2% CaCl₂ and 1/4# flocele/sx (14.1 ppg, 1.55 ft³/sx) followed by 200 sxs Class "H" w/2% CaCl₂ (15.6 ppg, 1.18 ft³/sx).
- INTERMEDIATE CASING: 1st Stage: 1500 sxs HLW w/5# gilsonite & 1/4# flocele/sx (12.4 ppg, 2.00 ft³/sx) followed by 200 sxs Class "H" w/1% CaCl₂ & 1/4# flocele/sx (15.8 ppg, 1.18 ft³/sx). DV Tool @ 1435' (if required due to water flow)
2nd Stage: 200 sxs HLW (12.7 ppg, 1.84 ft³/sx) followed by 200 sxs Class "H" w/2% CaCl₂ (15.6 ppg, 1.18 ft³/sx).

"SEE NEXT PAGE"

IN ABOVE SPACE DESCRIBE PROPOSED PROGRAM; IF PROPOSAL IS TO DEEPEN OR PLUG BACK, GIVE DATA ON PRESENT PRODUCTIVE ZONE AND PROPOSED NEW PRODUCTIVE ZONE. GIVE BLOWOUT PREVENTER PROGRAM, IF ANY.

I hereby certify that the information above is true and complete to the best of my knowledge and belief.

Signed Russell E. Sexton Russell E. Sexton Title Engineer's Assistant Date 8-6-84

(This space for State Use)

Eddie W. Seay

APPROVED BY Oil & Gas Inspector TITLE DATE

CONDITIONS OF APPROVAL, IF ANY:

AUG 21 1984

APPROVAL VALID FOR 180 DAYS
PERMIT EXPIRES 2/21/85
UNLESS DRILLING UNDERWAY

M. B. WEIR "B" WELL NO. 11
LEA COUNTY, NEW MEXICO

CEMENT PROGRAM CONTINUED:

4. PRODUCTION CASING: 1st Stage: 400 sxs 50-50 pozmix Class "H" w/0.2% HR-4, 5# gilsonite & 1/4# flocele/sx (13.7 ppg, 1.18 ft³/sx) followed by 200 sxs Class "H" w/0.2% HR-4 & 1/4# flocele/sx (15.6 ppg, 1.18 ft³/sx). DV Tool @ 6900'.
- 2nd Stage: 900 sxs HLW w/5# gilsonite & 1/4# flocele/sx (12.4 ppg, 2.00 ft³/sx) followed by 300 sxs Class "H" w/1/4# flocele/sx (15.6 ppg, 1.18 ft³/sx).

RECEIVED

AUG 20 1984

O.C.D.
HOBBS OFFICE

N MEXICO OIL CONSERVATION COMMISS
WELL LOCATION AND ACREAGE DEDICATION PLAT

Form C-102
Supersedes C-128
Effective 1-1-65

All distances must be from the outer boundaries of the Section.

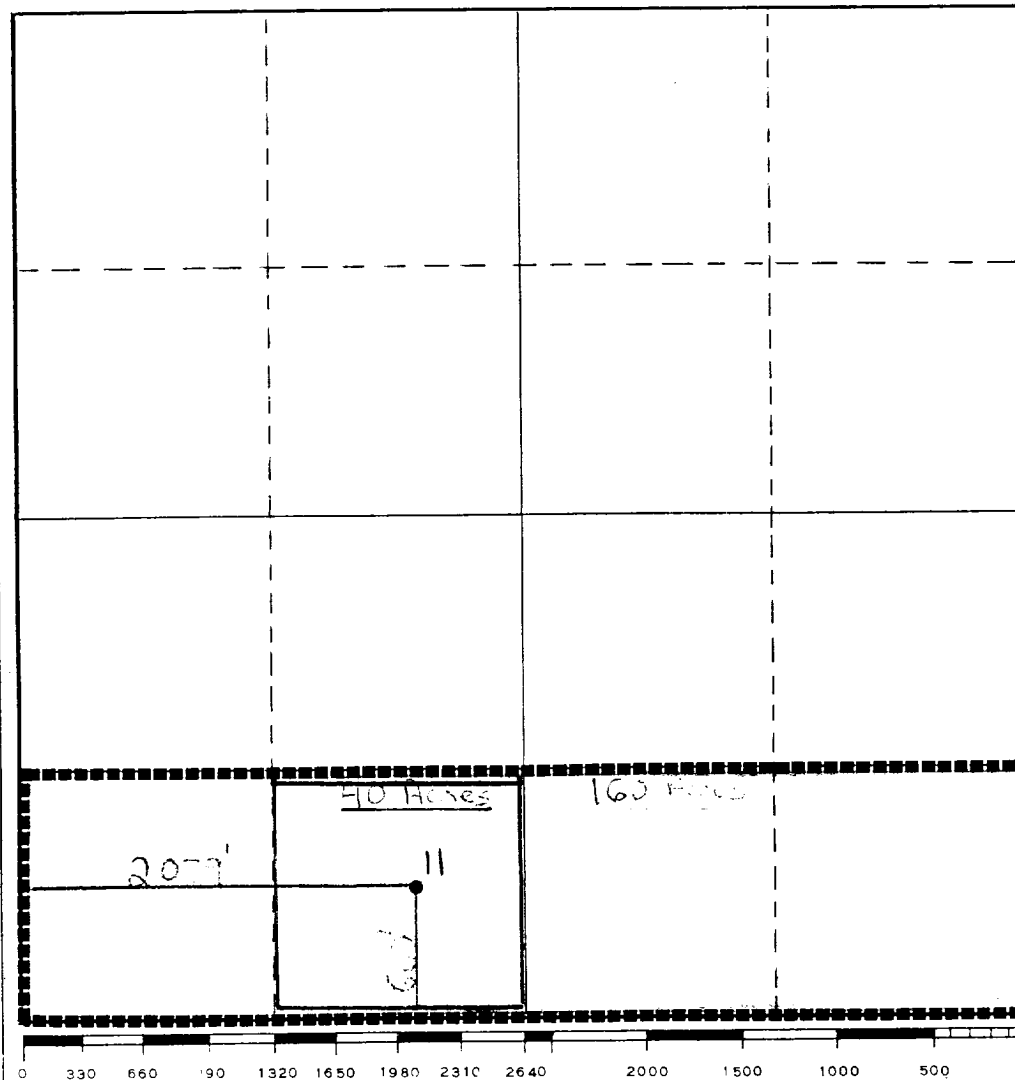
Operator Texaco Inc.		Lease M. B. Weir "B"		Well No. 11
Unit Letter N	Section 12	Township 20-S	Range 37-E	County Lea
Actual Footage Location of Well: 660 feet from the South line and 2079 feet from the West line				
Ground Level Elev. 3568' GR	Producing Formation Drinkard/Abo/Ellen	Pool Skaggs Drinkard, Skaggs Abo (Gas) & Wildcat	Dedicated Acreage: 40/160/40 Acres	

1. Outline the acreage dedicated to the subject well by colored pencil or hachure marks on the plat below.
2. If more than one lease is dedicated to the well, outline each and identify the ownership thereof (both as to working interest and royalty).
3. If more than one lease of different ownership is dedicated to the well, have the interests of all owners been consolidated by communitization, unitization, force-pooling, etc?

☐ Yes ☐ No If answer is "yes," type of consolidation _____

If answer is "no," list the owners and tract descriptions which have actually been consolidated. (Use reverse side of this form if necessary.) _____

No allowable will be assigned to the well until all interests have been consolidated (by communitization, unitization, forced-pooling, or otherwise) or until a non-standard unit, eliminating such interests, has been approved by the Commission.



CERTIFICATION

I hereby certify that the information contained herein is true and complete to the best of my knowledge and belief.

Name

Russell E. Sexton

Position

Engineer's Assistant

Company

Texaco Inc.

Date

August 6, 1984

I hereby certify that the well location shown on this plat was plotted from field notes of actual surveys made by me or under my supervision, and that the same is true and correct to the best of my knowledge and belief.

Date Surveyed

July 31, 1984

Registered Professional Engineer and/or Land Surveyor

R. S. Lane

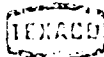
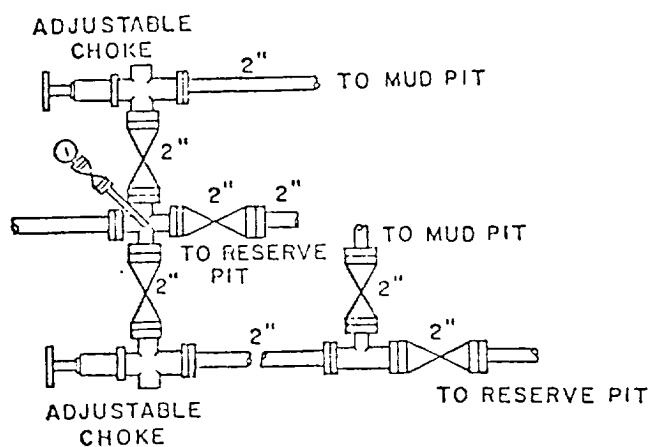
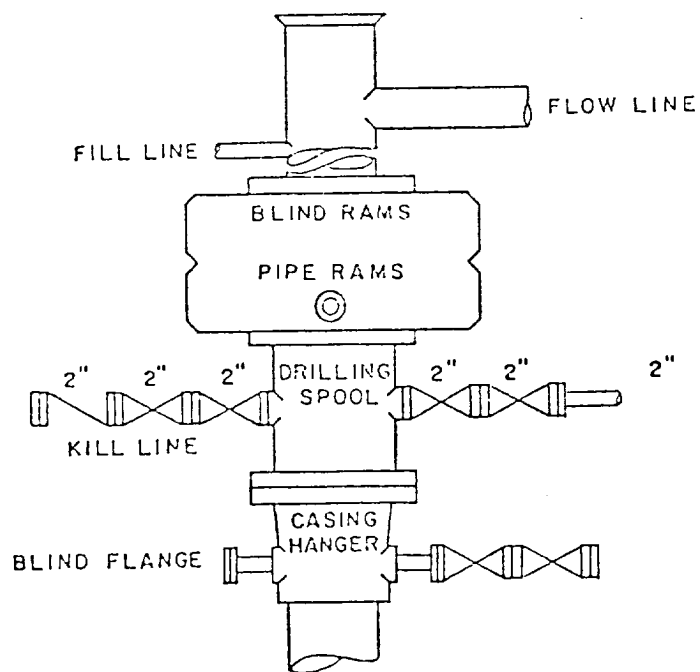
Certificate No.

R. S. Lane #8103

RECEIVED

AUG 29 1984

O.C.B.
HOBBS 10-10-84



TEXACO, INC.
PRODUCING DEPARTMENT (EAST)
MIDLAND, TEXAS

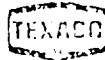


EXHIBIT "B"

DATE	EST. NO.	DRG. NO.
DATE	EST. NO.	DRG. NO.
DATE	EST. NO.	DRG. NO.
DATE	EST. NO.	DRG. NO.

RECEIVED

AUG 20 1984

O.C.D.
HOBBS OFFICE