

30-025-27917

NO. OF COPIES RECEIVED
DISTRIBUTION
SANTA FE
FILE
U.S.G.S.
LAND OFFICE
OPERATOR

PERMITS/COPIES

LOCATION/COPIES

DATE
11-1-80

Lease Type of Lease

STATE ☐FEE ☒

Lease & Gas Lease No.

APPLICATION FOR PERMIT TO DRILL, DEEPEN OR PLUG WELL

1. Type of Work	
DRILL <input checked="" type="checkbox"/> DEEPEN <input type="checkbox"/> PLUG <input type="checkbox"/>	
2. Type of Well	
Oil <input checked="" type="checkbox"/> Gas <input type="checkbox"/> Water <input type="checkbox"/> Other <input type="checkbox"/>	
3. Name of Operator	
Texaco Inc.	
4. Address of Location	
P. O. Box 3109 Midland, Texas 79702	
5. Location of Well	
UNIT <input checked="" type="checkbox"/> N <input type="checkbox"/> S <input type="checkbox"/> E <input type="checkbox"/> W <input type="checkbox"/> 990 South	
2310 West 12 20-S 37-E	
6. Depth of Well	
9450'	
7. Flow Rate (Show whether D, RT, etc.)	
3568'	

M. B. Weir "B"

11

Skaggs Drinkard, Wildcat

Lea

Drinkard, ABO, McKee

Rotary

Date Work will start
Immediately

SIZE OF HOLE	SIZE OF CASING	WEIGHT	DEPTH	PERCENT	EST. TOP
26"	20"	94# H-40 STC	40'	Ready Mix	Circulat
17 1/2"	13 3/8"	54.5# K-55 STC	1420'	1500	Circulat
12 1/4"	9 5/8"	36# K-55 STC	4000'	2100	Circulat
		40# S-80 STC			
8 3/4"	7"	26# K-55 LTC	9450'	1800	Circulat
		23# K-55 LTC			
		26# K-55 LTC			
		26# N-80 LTC			

APPROVAL VALID FOR 180 DAYS
 PERMIT EXPIRES 2/24/83
 UNLESS DRILLING UNDERWAY

Conductor Casing: Cement with Ready mix.

Surface Casing: 1300 sxs Class "H" w 4% gel, 2% CaCl₂ and 1/4# flocele/sx (14.1 ppg, 1.55 ft³/sx) followed by 200 sxs Class "H" w/2% CaCl₂ (15.6 ppg, 1.18 ft³/sx).

Intermediate Casing: 1st Stage: 1500 sxs HLW w/5# gilsonite & 1/4# flocele/sx (12.4 ppg, 2.00 ft³/sx) followed by 200 sxs Class "H" w/1% CaCl₂ & 1/4# flocele/sx (15.8 ppg, 1.18 ft³/sx). (DV tool at 1435' if required due to water flow.) 2nd Stage: 200 sxs HLW (12.7 ppg, 1.84 ft³/sx) followed by 200 sxs Class "H" w/2% CaCl₂ (15.6 ppg, 1.18 ft³/sx).

Production Casing: 1st Stage: 400 sxs 50-50 pozmix Class "H" w/0.2% HR-4, 5# gilsonite & 1/4# flocele/sx (13.7 ppg, 1.18 ft³/sx) followed by 200 sxs

IN ABOVE SPACE DESCRIBE PROPOSED PROGRAM IF DIFFERENT FROM THAT SET FORTH IN PERMIT AND PROPOSED WELL LOG. GIVE ADEQUATE PREVENTER PROGRAM, IF ANY.

I hereby certify that the information above is true and complete to the best of my knowledge.

Signed

R. S. Smith

Asst. Petr. Engr. Manager

August 19, 1982

(This space for State Use)

APPROVED BY

ORIGINAL SIGNED BY

JERRY SEXTON

CONDITIONS OF APPROVAL

DISTRICT 1 SUPR.

AUG 24 1982

Class "H" w/0.2% HR-4 & $\frac{1}{4}$ # flocele/sx (15.6ppg, 1.18 ft³/sx). (DV tool at 6900', top of Abo) 2nd Stage: 900 sxs HLW w/5# gilsonite & $\frac{1}{4}$ # flocele/sx (12.4 ppg, 2.00 ft³/sx). Followed by 300 sxs Class "H" w/ $\frac{1}{4}$ # flocele/sx (15.6 ppg, 1.18ft³/sx).

NEW MEXICO OIL CONSERVATION COMMISSION
WELL LOCATION AND ACREAGE DEDICATION PLAT

Form C-102
Supersedes C-128
Effective 1-1-65

All distances must be from the outer boundaries of the Section.

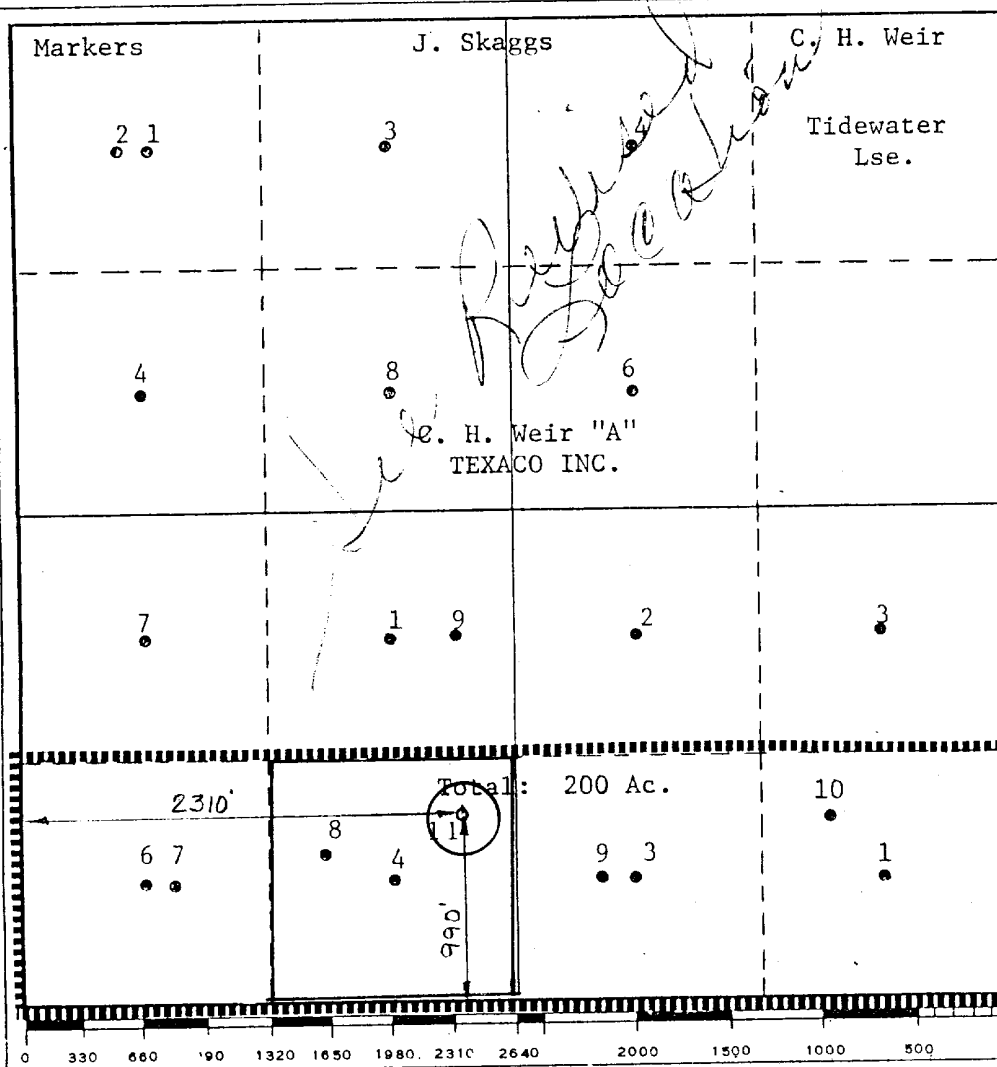
Operator TEXACO INC.		Lease M. B. Weir "B"		Well No. 11
Unit Letter N	Section 12	Township 20 South	Range 37 East	County Lea
Actual Footage Location of Well: 990 feet from the South line and 2310 feet from the West line Sec. 12				
Ground Level Elev. 3568'	Producing Formation Drinkard, Abo, McKee	Pool Skaggs Drinkard Wildcat	Dedicated Acreage: 40 Acres	

1. Outline the acreage dedicated to the subject well by colored pencil or hatchure marks on the plat below.
2. If more than one lease is dedicated to the well, outline each and identify the ownership thereof (both as to working interest and royalty).
3. If more than one lease of different ownership is dedicated to the well, have the interests of all owners been consolidated by communitization, unitization, force-pooling, etc?

☐ Yes ☐ No If answer is "yes," type of consolidation _____

If answer is "no," list the owners and tract descriptions which have actually been consolidated. (Use reverse side of this form if necessary.) _____

No allowable will be assigned to the well until all interests have been consolidated (by communitization, unitization, forced-pooling, or otherwise) or until a non-standard unit, eliminating such interests, has been approved by the Commission.



CERTIFICATION

I hereby certify that the information contained herein is true and complete to the best of my knowledge and belief.

B. L. Eiland
Name

B. L. Eiland

Position
Division Surveyor

Company
TEXACO INC.

Date
August 19, 1982

I hereby certify that the well location shown on this plat was plotted from field notes of actual surveys made by me or under my supervision, and that the same is true and correct to the best of my knowledge and belief.

August 19, 1982

Date Surveyed

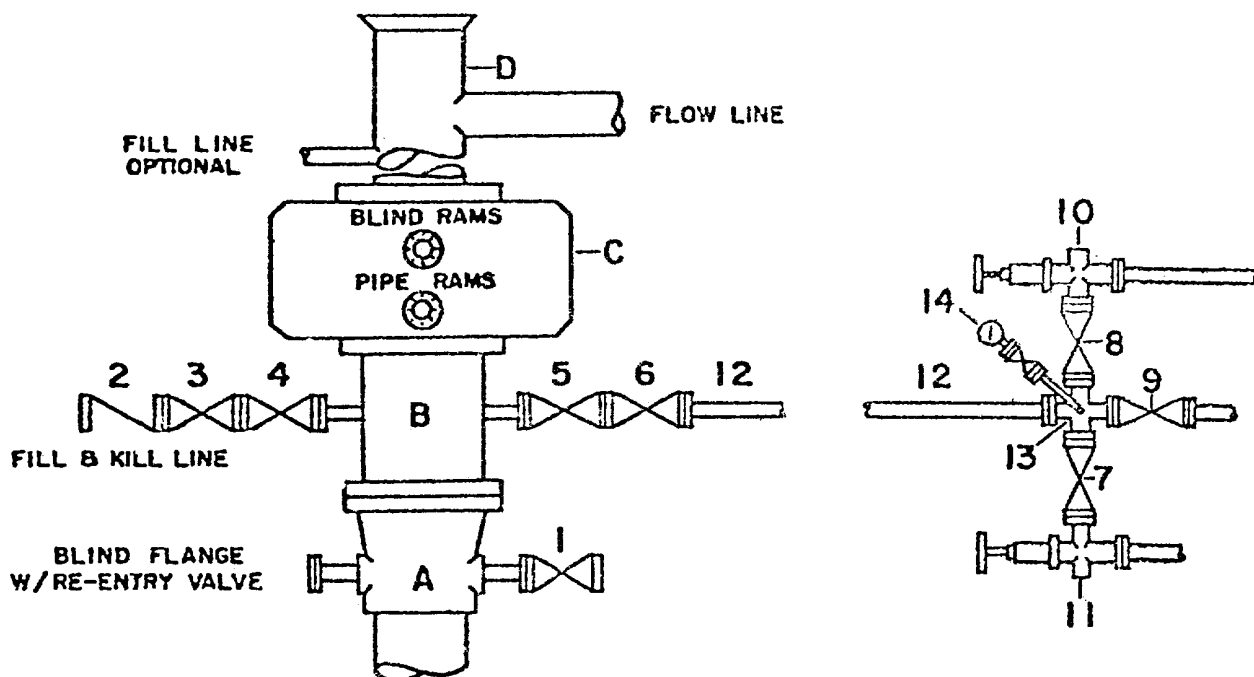
Registered Professional Engineer and/or Land Surveyor

B. L. Eiland
B. L. Eiland

Certificate No.
4386

DRILLING CONTROL CONDITION II-3000 PSI WP

H₂S TRIM REQUIRED
YES _____ NO _____



DRILLING CONTROL

MATERIAL LIST - CONDITION II

- | | |
|-----------|---|
| A | Texaco Wellhead |
| B | 3000# W.P. drilling spool with a 2" minimum flanged outlet for kill-line and 3" minimum flanged outlet for choke line |
| C | 3000# W.P. Dual ram type preventer, hydraulic operated with 1" steel, 3000# W.P. control lines (where sub-structure height is adequate, 2-3000# W.P. single ram type preventers may be utilized.) |
| D | Bell nipple with flowline and fill-up outlets. (Kill line may also be used for fill-up line.) |
| 1,3,4,7,8 | 2" minimum 3000# W.P. flanged full opening steel gate valve, or Halliburton Lo Torc Plug valve. |
| 2 | 2" minimum 3000# W.P. back pressure valve |
| 5,6,9 | 3" minimum 3000# W.P. flanged full opening steel gate valve, or Halliburton Lo Torc Plug valve. |
| 12 | 3" minimum schedule 80, Grade "B", seamless line pipe |
| 13 | 2" minimum x 3" minimum 3000# W.P. flanged cross |
| 10, 11 | 2" minimum 3000# W.P. adjustable choke bodies |
| 14 | Cameron Mud Gauge or equivalent (location optional in choke line.) |

SCALE:	DATE	EST. NO.	DRG. NO.
DRAWN BY			
CHECKED BY			
APPROVED BY			



TEXACO, INC.
PRODUCING DEPARTMENT-U.S. (CENT.)
MIDLAND, TEXAS



EXHIBIT B

73-74

RECEIVED

AUG 28 1992

U.S. HOUSE OF REPRESENTATIVES

Comment Log
1-23-92
Sanc