

30-035-3033

NO. OF COPIES RECEIVED	
DISTRIBUTION	
SANTA FE	
FILE	
U.S.G.S.	
LAND OFFICE	
OPERATOR	

NEW MEXICO OIL CONSERVATION COMMISSION

Form C-101
Revised 1-1-65

5A. Indicate Type of Lease STATE <input checked="" type="checkbox"/> FEE <input type="checkbox"/>	
5. State Oil & Gas Lease No. B-229	
7. Unit Agreement Name	
8. Farm or Lease Name Janda (NCT-L)	
9. Well No. 1	
10. Field and Pool, or Wildcat Jalmat	
12. County Lea	
19. Proposed Depth 4100'	19A. Formation Yates
20. Rotary or C.T. Rotary	
21. Elevations (Show whether DF, RT, etc.) 3549' GL	22. Approx. Date Work will start 12-6-82

APPLICATION FOR PERMIT TO DRILL, DEEPEN, OR PLUG BACK	
1a. Type of Work b. Type of Well OIL WELL <input checked="" type="checkbox"/> GAS WELL <input type="checkbox"/> OTHER <input type="checkbox"/> SINGLE ZONE <input checked="" type="checkbox"/> MULTIPLE ZONE <input type="checkbox"/>	
2. Name of Operator Gulf Oil Corporation	
3. Address of Operator P. O. Box 670, Hobbs, NM 88240	
4. Location of Well UNIT LETTER D LOCATED 330 FEET FROM THE North LINE AND 990 FEET FROM THE West LINE OF SEC. 36 TWP. 22S RGE. 35E NMPM	
21. Elevations (Show whether DF, RT, etc.) 3549' GL	
21A. Kind & Status Plug. Bond	
21B. Drilling Contractor Unknown	
22. Approx. Date Work will start 12-6-82	

PROPOSED CASING AND CEMENT PROGRAM

SIZE OF HOLE	SIZE OF CASING	WEIGHT PER FOOT	SETTING DEPTH	SACKS OF CEMENT	EST. TOP
12 1/2"	8-5/8"	24#	1200'	400	circ
7-7/8"	5 1/2"	15.5#	4100'	500	circ

Drilling Mud: 0' - 1200' FW spud mud 8.7-8.8 ppg, 36 vis, 9 ph
1200' - 4100' Brine 10.0 ppg, possible mud up with starch & gel 10.0 ppg, 35 vis, 9 ph

See Attached BOP Drawing #2

APPROVAL VALID FOR 180 DAYS
PERMIT EXPIRES 6/1/83
UNLESS DRILLING UNDERWAY

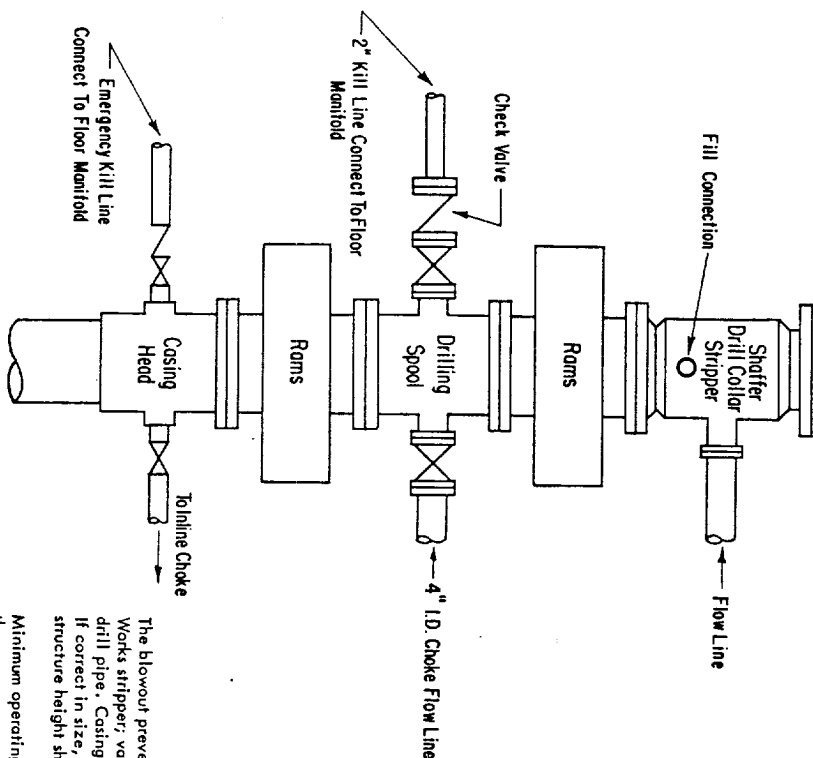
IN ABOVE SPACE DESCRIBE PROPOSED PROGRAM: IF PROPOSAL IS TO DEEPEN OR PLUG BACK, GIVE DATA ON PRESENT PRODUCTIVE ZONE AND PROPOSED NEW PRODUCTIVE ZONE. GIVE BLOWOUT PREVENTER PROGRAM, IF ANY.

I hereby certify that the information above is true and complete to the best of my knowledge and belief.

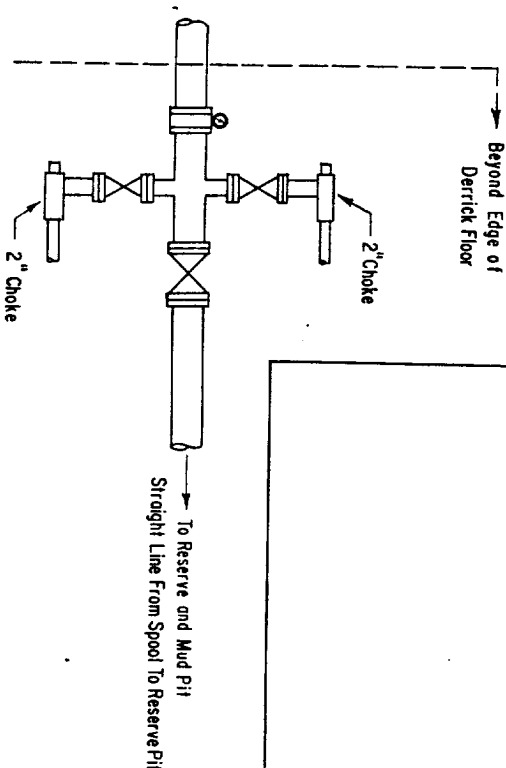
Signed R. C. Anderson Title Area Production Manager Date 11-29-82

(This space for State Use)

APPROVED BY JERRY SEXTON TITLE DISTRICT 1 SUPR. DATE DEC 1 1982



3000 PSI WORKING PRESSURE BLOWOUT PREVENTER HOOK-UP



ADDITIONS - DELETIONS - CHANGES
SPECIFY

The blowout preventer assembly shall consist of one blind ram preventer and one pipe ram preventer, both hydraulically operated; a Shaffer Tool Works stripper; valves; chokes and connections, as illustrated. If a tapered drill string is used, a ram preventer must be provided for each size of drill pipe. Casing and tubing rams to fit the preventer are to be available as needed. The ram preventers may be two singles or a double type. If correct in size, the flanged outlets of the ram preventer may be used for connecting to the 4-inch I.D. choke flow line and kill line. The substructure height shall be sufficient to install a rotating blowout preventer.

Minimum operating equipment for the preventers shall be as follows: (1) Pump (s), driven by a continuous source of power, capable of closing all the pressure-operated devices simultaneously within _____ seconds. The pump (s) is to be connected to a closed type hydraulic operating system. (2) When requested, accumulators with a precharge of nitrogen of not less than 750 PSI and connected so as to receive a fluid charge from the above pump (s). With the charging pump (s) shut down, the pressurized fluid volume stored in the accumulators must be sufficient to close all the pressure-operated devices simultaneously within _____ seconds, after closure, the remaining accumulator pressure shall be not less than 1000 PSI with the remaining accumulator fluid volume at least _____ percent of the original. (3) When requested, an additional source of power, remote and equivalent, is to be available to operate the above pump (s); or there shall be an additional pump (s) operated by separate power and equal in performance capabilities.

The closing manifold shall have a separate control for each pressure-operated device. Controls are to be labeled, with control handles indicating open and closed positions. A pressure reducer and regulator must be provided if a Hydril preventer is used. Gulf Legion No. 38 hydraulic oil, an equivalent or better, is to be used as the fluid to operate the hydraulic equipment.

The choke manifold, choke flow line, and choke lines are to be supported by metal stands and adequately anchored. The choke flow line and choke lines shall be constructed as straight as possible and without sharp bends. Easy and safe access is to be maintained to the choke manifold. All valves are to be selected for operation in the presence of oil, gas, and drilling fluids. The choke flow line valve connected to the drilling spool and all ram type preventers must be equipped with stem extensions, universal joints if needed, and hand wheels which are to extend beyond the edge of the derrick substructure. All other valves are to be equipped with handles.

RECEIVED
NOV 29 1982
C. C. B.
HOBBS OFFICE

NEW MEXICO OIL CONSERVATION COMMISSION
WELL LOCATION AND ACREAGE DEDICATION PLAT

Form C-102
Supersedes C-128
Effective 1-1-65

All distances must be from the outer boundaries of the Section

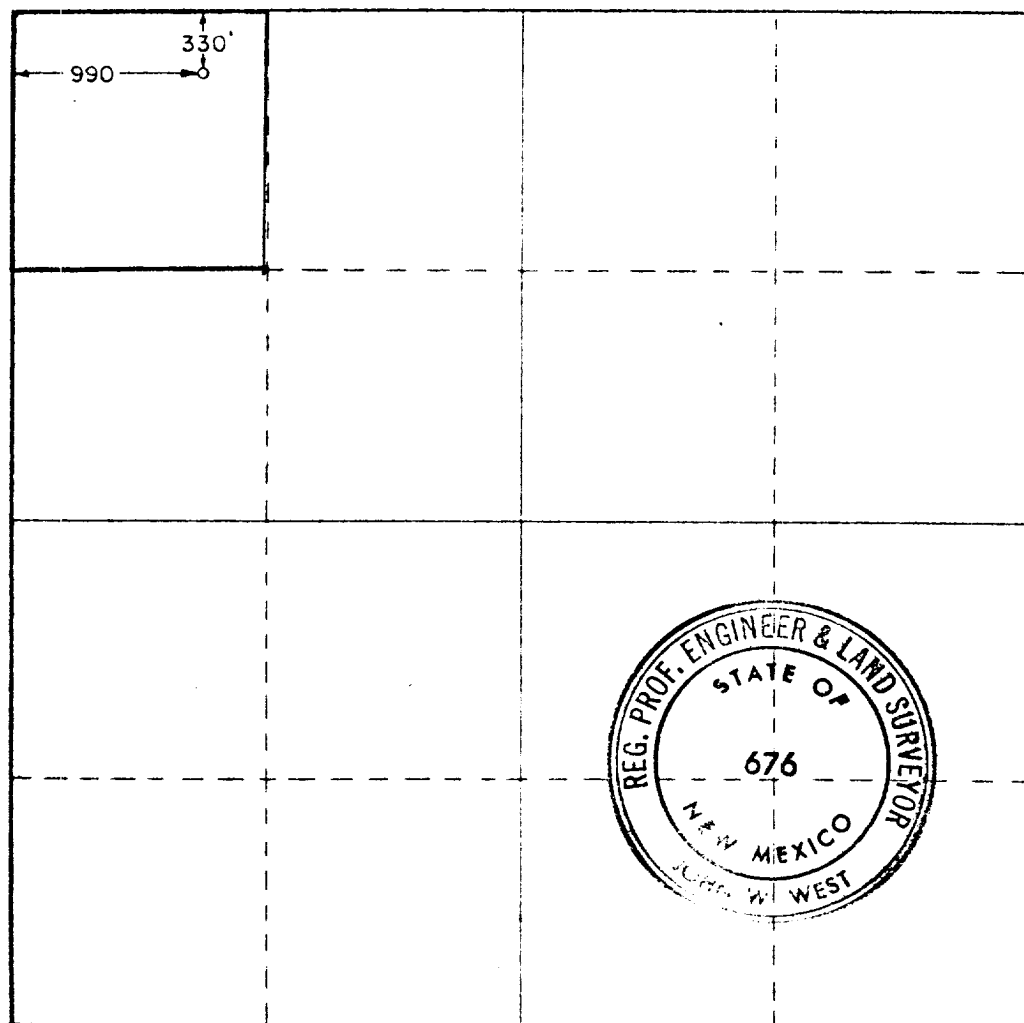
Operator GULF OIL CORP.			Lease JANDA NTC-L		Well No. NO. 1
Unit Letter D	Section 36	Township 22-SOUTH	Range 35-EAST	County LEA	
Actual Footage Location of Well:					
330 feet from the NORTH line and		990 feet from the WEST line			
Ground Level Elev. 3549.3	Producing Formation Yates		Pool Jalmat	Dedicated Acreage: 40 Acres	

1. Outline the acreage dedicated to the subject well by colored pencil or hatchure marks on the plat below.
2. If more than one lease is dedicated to the well, outline each and identify the ownership thereof (both as to working interest and royalty).
3. If more than one lease of different ownership is dedicated to the well, have the interests of all owners been consolidated by communitization, unitization, force-pooling, etc?

☐ Yes ☐ No If answer is "yes," type of consolidation _____

If answer is "no," list the owners and tract descriptions which have actually been consolidated. (Use reverse side of this form if necessary.) _____

No allowable will be assigned to the well until all interests have been consolidated (by communitization, unitization, forced-pooling, or otherwise) or until a non-standard unit, eliminating such interests, has been approved by the Commission.



CERTIFICATION

I hereby certify that the information contained herein is true and complete to the best of my knowledge and belief.

R. C. Anderson

Name
R. C. Anderson
Position
Area Production Manager
Company
Gulf Oil Corporation

Date
11-29-82

I hereby certify that the well location shown on this plat was plotted from field notes of actual surveys made by me or under my supervision, and that the same is true and correct to the best of my knowledge and belief.

11-12-82

Date Surveyed
Registered Professional Engineer and/or Land Surveyor

John W. West

Certificate No
676

0 330 660 990 1320 1650 1980 2310 2640 2970 3300 3630 3960 4290 4620 4950 5280 5610 5940 6270 6600

NOV 29 1982
C. C. O.
HOBBS OFFICE

111