

**NEW MEXICO OIL CONSERVATION COMMISSION
WELL LOCATION AND ACREAGE DEDICATION PLAT**

Form C-122
Supersedes C-128
Effective 1-1-65

All distances must be from the outer boundaries of the Section.

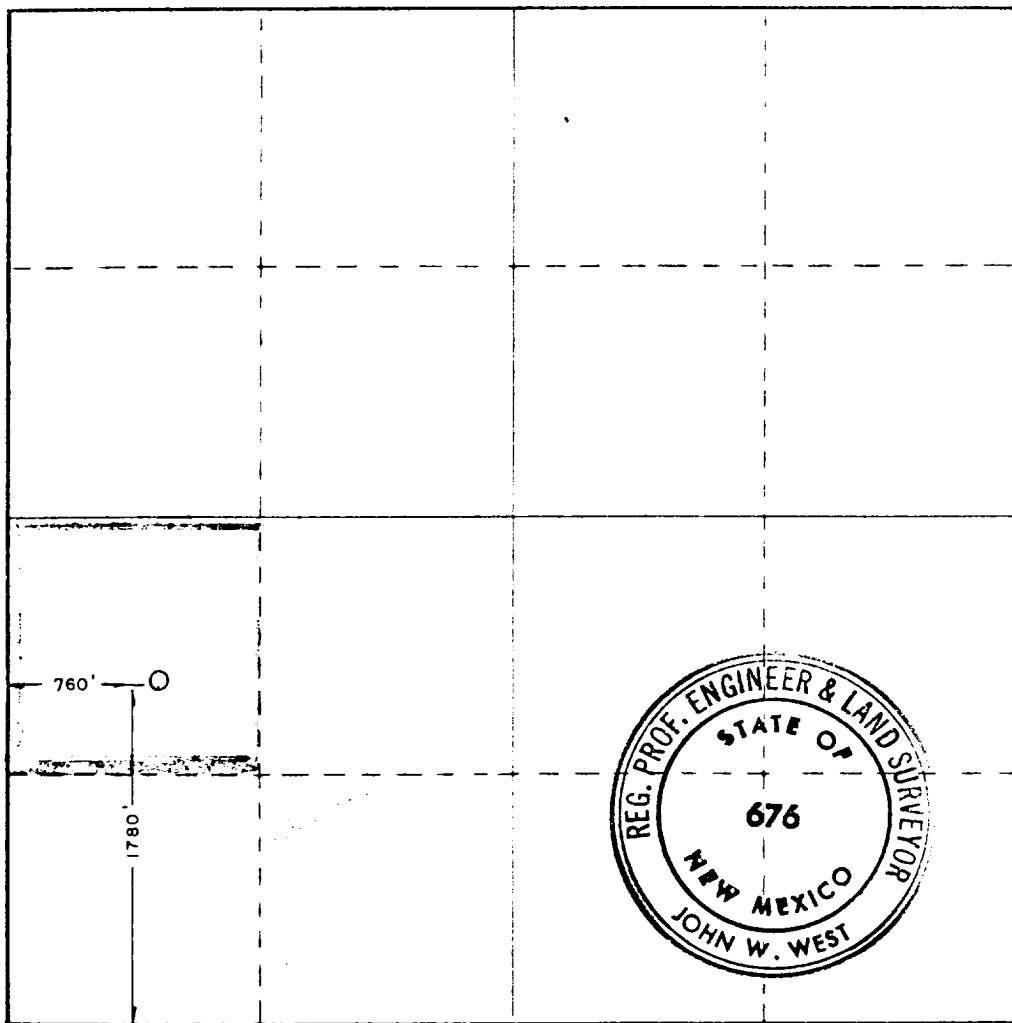
Operator SUN EXPLORATION & PRODUCTION CO.		Lease EVA OWEN		Well No. 2
Unit Letter L	Section 25	Township 21 SOUTH	Range 37 EAST	County LEA
Actual Footage Location of Well:				
1780 feet from the SOUTH		line and 760 feet from the WEST line		
Ground Level Elev. 3369.8'	Producing Formation Drinkard	Pool Drinkard	Dedicated Acreage: 40 Acres	

1. Outline the acreage dedicated to the subject well by colored pencil or hatchure marks on the plat below.
2. If more than one lease is dedicated to the well, outline each and identify the ownership thereof (both as to working interest and royalty).
3. If more than one lease of different ownership is dedicated to the well, have the interests of all owners been consolidated by communitization, unitization, force-pooling, etc?

☐ Yes ☐ No If answer is "yes," type of consolidation _____

If answer is "no," list the owners and tract descriptions which have actually been consolidated. (Use reverse side of this form if necessary.) _____

No allowable will be assigned to the well until all interests have been consolidated (by communitization, unitization, forced-pooling, or otherwise) or until a non-standard unit, eliminating such interests, has been approved by the Commission.



CERTIFICATION

I hereby certify that the information contained herein is true and complete to the best of my knowledge and belief.

Dee Ann Kemp
Name

Dee Ann Kemp
Position

Sr. Acct. Asst.

Sun Exploration & Production Co.
Company

8-18-83
Date

I hereby certify that the well location shown on this plat was plotted from field notes of actual surveys made by me or under my supervision, and that the same is true and correct to the best of my knowledge and belief.

Date Surveyed
May 4, 1983

Registered Professional Engineer
and/or Land Surveyor

John W. West

Certificate No.
John W. West, N.M. R.L.S. No. 676

